

DIN RAIL ENCLOSURES

DIN Rail Standard Height Module Boxes

- Snap fit modular design for ease of assembly and custom kitting
- Base fits 35mm DIN Rail or directly to flat surface
- Moulded in light grey UL94-V0 flame retardant polycarbonate
- Carries up to 3 PCBs horizontally or 2 vertically
- Snap fit terminal cover options for IP20 finger protection
- Snap in covers available in grey, clear, transparent red and smoked
- Standard enclosure consists of base, top and rail/wall clips
- Open top as standard, solid top, vented and extended wall options available
- Covers and terminal guards ordered separately and can be supplied in kits
- Easily customised covers and terminal guards
- Clear, Smoked and Red covers are moulded in PC UL94-V2
- Grey covers are PC UL94-V0
- Enclosed base offers isolation from DIN Rail
- Front panel ideal for screen printing and recessed solid top for labels and membranes
- Other colours and EMC shielding available to order
- Screws to mount base

CNMB



	BOX LENGTH	HORIZONTAL PCB SIZES			VERTICAL PCB SIZES		PCB FIXING BOSS	
		A	B	C	D	E	X	Y
CNMB/1-	17.5mm	86.5x14mm	57x14mm	41.8x14mm	34x59.6mm	40x14.8mm	6.2mm	18.3mm
CNMB/2-	36mm	86.5x33mm	57x32mm	42x32mm	34x59.6mm	40x33mm	6.2mm	18.3mm
CNMB/3-	53mm	86.5x50mm	57x49mm	42x49mm	34x59.6mm	40x50mm	8.8mm	18.3mm
CNMB/4-	71mm	86.5x68mm	57x67mm	42x67mm	34x59.6mm	40x68mm	8.8mm	18.3mm
CNMB/5-	88mm	86.5x84mm	57x83mm	42x83mm	34x59.6mm	40x84mm	8.8mm	18.3mm
CNMB/6-	106mm	86.5x103mm	57x102mm	42x102mm	34x59.6mm	40x103mm	8.9mm	18.3mm
CNMB/9-	159mm	86.5x156mm	57x155.5mm	42x155mm	34x59.6mm	40x155mm	8.9mm	18.3mm
CNMB/12-	212mm	86.5x208mm	57x207mm	42x207mm	34x59.6mm	40x208mm	8.9mm	18.3mm

For double row terminals covers both sides, add /2 to type No. (e.g. CNMB/3/2)

For single row terminals cover one side only, add /1 to type No. (e.g. CNMB/3/1)

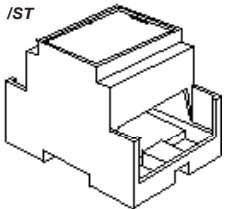
Box supplied with open top as standard

For solid recessed top used for membrane keypads or clear covers to enclose labels, add /ST to type No. (e.g. CNMB/3ST/2)

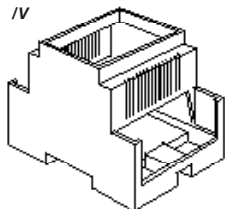
For cooling vents both sides add /V to type No. (e.g. CNMB/3/VI/2)

For extended side walls which meet the lower PCB behind terminals, add /W to type No. (e.g. CNMB/3W/2)

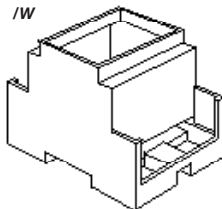
Solid Top
/ST



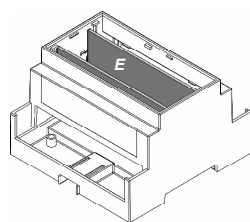
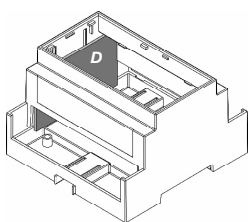
Vented Sides
/V



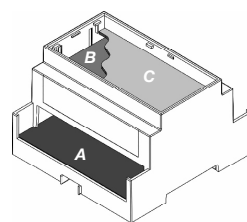
Extended Walls
/W



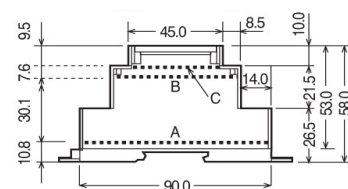
Vertical PCB Positions



Horizontal PCB Positions



Horizontal PCB Sizes



+44 (0)1638 716101
info@camdenboss.com
www.camdenboss.com

We operate a constant improvement policy, our products are subject to change without notice.

Ver 2



DIN RAIL ENCLOSURES

UNIVERSAL ENCLOSURES

HAND HELD CASES

HEAVY DUTY ENCLOSURES

DIN RAIL ENCLOSURES

INTERFACE SUPPORTS

ELECTRICAL ENCLOSURES

DIECAST & METAL ENCLOSURES

DESKTOP & INSTRUMENT CASES

MULTI-PURPOSE & POTTING BOXES

19" ENCLOSURES

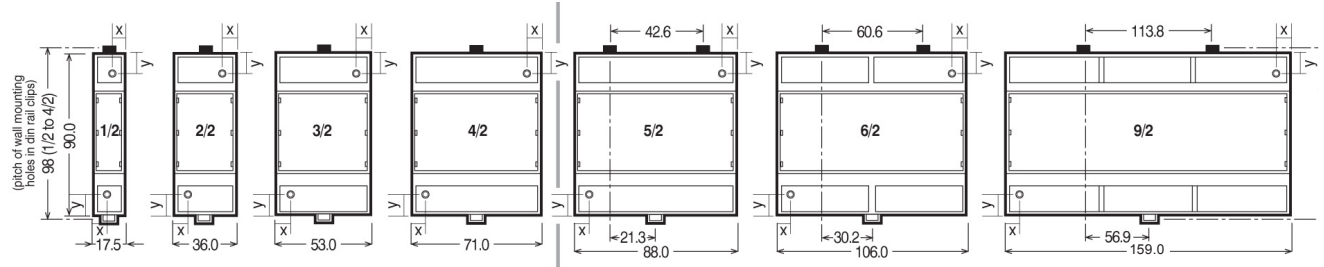
19" CABINETS

DEVELOPMENT BOARD ENCLOSURES

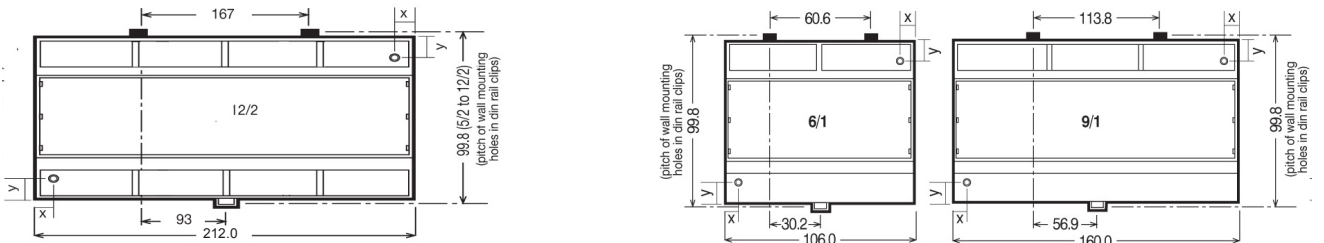
CUSTOM SIZED ENCLOSURES

FSPT/ CUSTOM SERVICES

Double Row Terminals/ covers both sides



Single Row Terminals/ covers on one side



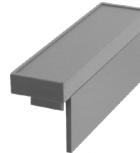
Terminal Guards

Solid

TYPE NO.	STYLE
CNMB/1/TGS	Solid
CNMB/2/TGS	Solid
CNMB/3/TGS	Solid
CNMB/4/TGS	Solid
CNMB/5/TGS	Solid

*For 6, 9 & 12 Size Module Use CNMB/3/TGS

CNMB/TGS



RJ45

TYPE NO.	STYLE
CNMB/3/TGRJ45	RJ45 - with x5 5.08 Pitch Perforated Holes

Can be used on sizes 3, 6, 9 & 12

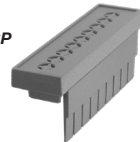


5.08mm pitch perforated

TYPE NO.	STYLE
CNMB/1/TG508P	Solid
CNMB/2/TG508P	Solid
CNMB/3/TG508P	Solid
CNMB/4/TG508P	Solid
CNMB/5/TG508P	Solid

*For 6, 9 & 12 Size Module Use CNMB/3/TG508P

CNMB/TG508P



MINI USB

TYPE NO.	STYLE
CNMB/3/TGMINIUSB	MINI USB - with x7 5.08 Pitch Perforated Holes

Can be used on sizes 3, 6, 9 & 12



5.08mm pitch pre-drilled

TYPE NO.	STYLE	POLES
CNMB/1/TG508	Pre-Drilled	3
CNMB/2/TG508	Pre-Drilled	6
CNMB/3/TG508	Pre-Drilled	9
CNMB/4/TG508	Pre-Drilled	12
CNMB/5/TG508	Pre-Drilled	15

For 6, 9 & 12 Size Module Use CNMB/3/TG508

CNMB/TG508



USB

TYPE NO.	STYLE
CNMB/3/TGUSB	USB - with x6 5.08 Pitch Perforated Holes

Can be used on sizes 3, 6, 9 & 12



7.5mm pitch pre-drilled

TYPE NO.	STYLE	POLES
CNMB/1/TG750	Pre-Drilled	2
CNMB/2/TG750	Pre-Drilled	4
CNMB/3/TG750	Pre-Drilled	6
CNMB/4/TG750	Pre-Drilled	8
CNMB/5/TG750	Pre-Drilled	10

For 6, 9 & 12 Size Module Use CNMB/3/TG750

CNMB/TG750



10.16mm pitch pre-drilled

TYPE NO.	STYLE	POLES
CNMB/1/TG100	Pre-Drilled	2
CNMB/2/TG100	Pre-Drilled	3
CNMB/3/TG100	Pre-Drilled	5
CNMB/4/TG100	Pre-Drilled	6
CNMB/5/TG100	Pre-Drilled	7

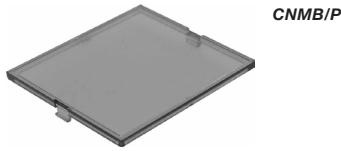
For 6, 9 & 12 Size Module use CNMB/3/TG100

CNMB/TG100



DIN RAIL ENCLOSURES

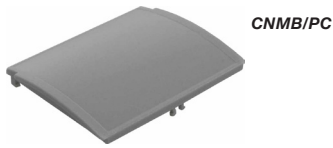
Standard Covers



CNMB/P

RED TRANSPARENT	SMOKED TRANSPARENT	CLEAR TRANSPARENT	GREY	SIZE
CNMB/1/PR	CNMB/1/PS	CNMB/1/PC	CNMB/1/PG	1
CNMB/2/PR	CNMB/2/PS	CNMB/2/PC	CNMB/2/PG	2
CNMB/3/PR	CNMB/3/PS	CNMB/3/PC	CNMB/3/PG	3
CNMB/4/PR	CNMB/4/PS	CNMB/4/PC	CNMB/4/PG	4
CNMB/5/PR	CNMB/5/PS	CNMB/5/PC	CNMB/5/PG	5
CNMB/6/PR	CNMB/6/PS	CNMB/6/PC	CNMB/6/PG	6
CNMB/9/PR	CNMB/9/PS	CNMB/9/PC	CNMB/9/PG	9
CNMB/12/PR	CNMB/12/PS	CNMB/12/PC	CNMB/12/PG	12

Curved Covers

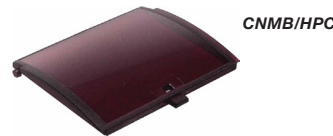


CNMB/PC

RED TRANSPARENT	SMOKED TRANSPARENT	CLEAR TRANSPARENT	GREY	SIZE
CNMB/1/PRC	CNMB/1/PSC	CNMB/1/PCC	CNMB/1/PGC	1
CNMB/2/PRC	CNMB/2/PSC	CNMB/2/PCC	CNMB/2/PGC	2
CNMB/3/PRC	CNMB/3/PSC	CNMB/3/PCC	CNMB/3/PGC	3
CNMB/4/PRC	CNMB/4/PSC	CNMB/4/PCC	CNMB/4/PGC	4
CNMB/5/PRC	CNMB/5/PSC	CNMB/5/PCC	CNMB/5/PGC	5
CNMB/6/PRC	CNMB/6/PSC	CNMB/6/PCC	CNMB/6/PGC	6
CNMB/9/PRC	CNMB/9/PSC	CNMB/9/PCC	CNMB/9/PGC	9

Curved Hinged Covers

- For use with extended module only

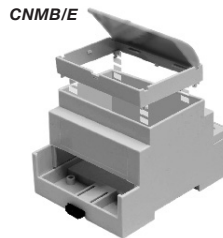


CNMB/HPC

RED TRANSPARENT	CLEAR TRANSPARENT	GREY	SIZE
CNMB/2/HPRC	CNMB/2/HPCC	CNMB/2/HPGC	2
CNMB/3/HPRC	CNMB/3/HPCC	CNMB/3/HPGC	3
CNMB/4/HPRC	CNMB/4/HPCC	CNMB/4/HPGC	4
CNMB/5/HPRC	CNMB/5/HPCC	CNMB/5/HPGC	5
CNMB/6/HPRC	CNMB/6/HPCC	CNMB/6/HPGC	6
CNMB/9/HPRC	CNMB/9/HPCC	CNMB/9/HPGC	9

Extended Height Modules

- 16mm high
- Accepts hinged, curved lid
- Adds an additional horizontal PCB slot



CNMB/E

TYPE NO.	WIDTH	SIZE
CNMB/2/E	34.7mm	2
CNMB/3/E	52.0mm	3
CNMB/4/E	70.0mm	4
CNMB/5/E	86.5mm	5
CNMB/6/E	104.5mm	6
CNMB/9/E	157.7mm	9

Enclosure Kits

- Each kit contains one grey panel cover and a selection of solid and perforated terminal guards
- Kits of the most frequently used components are available to order



CNMB/ST/KIT

KIT	KIT PART NO.	COVER /PG	TERMINAL /TG508P	GUARD /TGS	EXTENSION MODULE			
					/IE	/E		
STANDARD	CNMB/1/KIT	1	2	1	-	-		
	CNMB/2/KIT	1	2	1	-	-		
	CNMB/3/KIT	1	2	1	-	-		
	CNMB/4/KIT	1	2	1	-	-		
	CNMB/5/KIT	1	2	1	-	-		
	CNMB/6/KIT	1	4*	2*	-	-		
	CNMB/9/KIT	1	6*	3*	-	-		
	CNMB/12/KIT	1	8*	4*	-	-		
	EXTENDED HEIGHT	/HPCC						
		CNMB/1E/KIT	1	2	1	1	1	
		CNMB/2E/KIT	1	2	1	1	1	
		CNMB/3E/KIT	1	2	1	1	1	
CNMB/4E/KIT		1	2	1	1	1		
CNMB/5E/KIT		1	2	1	1	1		
EXTENDED HEIGHT	CNMB/6E/KIT	1	4*	2*	1	1		
	CNMB/9E/KIT	1	6*	3*	1	1		
	CNMB/12E/KIT	1	8*	4*	1	1		

* For size 6, 9 and 12, multiple 'size 3' terminal guards are supplied. For example size 6 requires 2x 'size 3' guards per side. Kits are also available for vented, solid top and extended wall bodies e.g. CNMB/2ST/KIT. Where a box has only one open side (e.g. CNMB/5/1) no solid terminal guards are supplied.



+44 (0)1638 716101
info@camdenboss.com
www.camdenboss.com

We operate a constant improvement policy, our products are subject to change without notice.

Ver 1.0

