

6

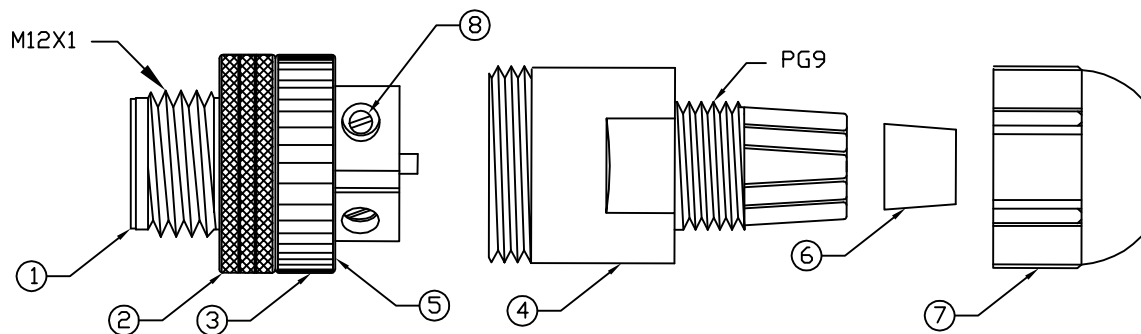
5

4

3

2

1



## NOTES:

## MATERIALS:

MOLDED BODY:	BLACK POLYAMIDE
COUPLING NUT:	NI PLATED BRASS
COMPRESSION NUT:	BLACK POLYAMIDE
GROMMETT	NITRILE RUBBER
CONTACTS:	GOLD/NICKEL OVER COPPER ALLOY
INSERT:	BLACK NYLON
INSERT HOUSING:	BLACK POLYAMIDE
SET SCREWS:	NI PLATED BRASS

## ELECTRICAL:

CURRENT RATING:	4AMP MAX
VOLTAGE RATING:	250V

## MECHANICAL:

TEMPERATURE RANGE:	-20° TO 80°C
INGRESS PROTECTION:	IP 67

## AGENCY CERTIFICATIONS:

AGENCY:	cCSAus FILE LR6837
---------	--------------------

TABLE 2 - COMPONENT INFORMATION

ITEM	QTY	DESCRIPTION
1	1	INSULATOR
2	1	COUPLNG NUT
3	1	INSERT BODY
4	1	CONNECTOR BODY
5	1	O-RING
6	1	GROMMET
7	1	COMPRESSION NUT
8	4	SCREW, M3 x 5

UPDATE PER JM EC NO: WNA2009-0313 DRWN: LHARTMAN 2008/10/27 CHKD: YOU 2008/11/07 APPR: JFMURPHY 2008/11/10	DESCRIPTION REV	QUALITY SYMBOLS	GENERAL TOLERANCES (UNLESS SPECIFIED)	DIMENSION STYLE	SCALE	DESIGN UNITS	THIRD ANGLE PROJECTION															
		$\nabla=0$ $\nabla C=0$	<table border="1"> <thead> <tr> <th></th> <th>mm</th> <th>INCH</th> </tr> </thead> <tbody> <tr> <td>4 PLACES</td> <td>±---</td> <td>±---</td> </tr> <tr> <td>3 PLACES</td> <td>±---</td> <td>±.005</td> </tr> <tr> <td>2 PLACES</td> <td>±---</td> <td>±.010</td> </tr> <tr> <td>1 PLACE</td> <td>±---</td> <td>±.020</td> </tr> </tbody> </table>		mm	INCH	4 PLACES	±---	±---	3 PLACES	±---	±.005	2 PLACES	±---	±.010	1 PLACE	±---	±.020	---- DRAWN BY DATE <b>LHARTMAN 2008/10/27</b> CHECKED BY DATE <b>YOU 2008/10/27</b> APPROVED BY DATE <b>JFMURPHY 2008/10/27</b>	1:1	INCH	
			mm	INCH																		
		4 PLACES	±---	±---																		
3 PLACES	±---	±.005																				
2 PLACES	±---	±.010																				
1 PLACE	±---	±.020																				
ANGULAR ±1° <b>DRAFT WHERE APPLICABLE          MUST REMAIN          WITHIN DIMENSIONS</b>			MATERIAL NO. <b>1200710039</b>	TITLE <b>MICRO-CHANGE FIELD ATTCH          4 POLE MALE ST FF          PG9 FITTING SCREW</b>	<b>MOLEX INCORPORATED</b>	SHEET NO. <b>1 OF 1</b>																
B	A	THIS DRAWING CONTAINS INFORMATION THAT IS PROPRIETARY TO MOLEX INCORPORATED AND SHOULD NOT BE USED WITHOUT WRITTEN PERMISSION																				

6

5

4

3

2

1