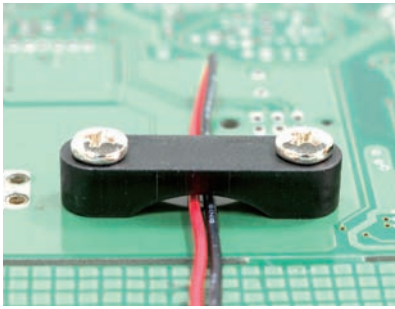
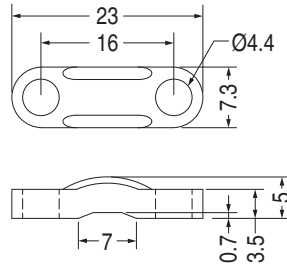


# 電線固定扣 CABLE CLAMP

用途：使用螺絲將電線固定於機器中，固定電線不易鬆動。

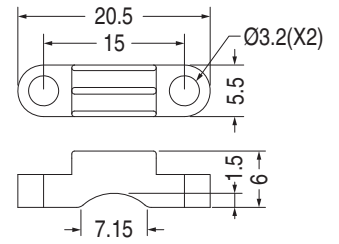


- Material: Nylon 66 (UL)
- Flame Class: 94V-2/94V-0
- Color: Natural/Black
- Unit: mm



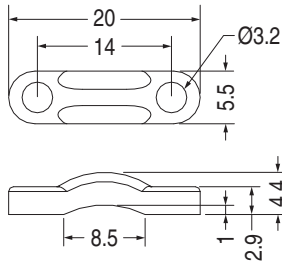
- Flame Class: 94HB
- Color: Black

Part No.	Package
CLT-4	1000

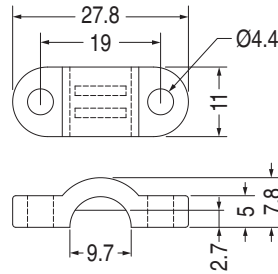


- Material: Nylon 6 (UL)
- Flame Class: 94V-2
- Color: Natural

Part No.	Package
CLT-19	1000

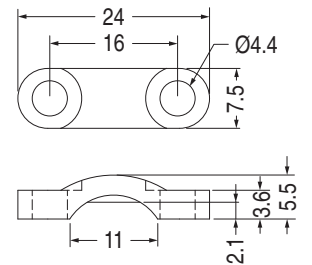


Part No.	Package
CLT-2	500



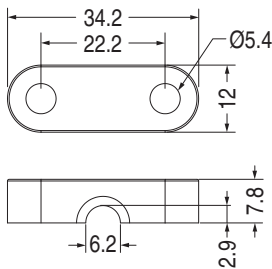
- Material: Nylon 66 (UL)/ABS (UL)/PC+ABS (UL)
- Flame Class: 94HB/94V-2/94V-0

Part No.	Package
CLT-1	500



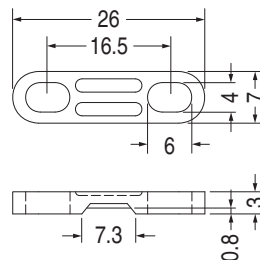
- Flame Class: 94HB
- Color: Black

Part No.	Package
CLT-5	1000



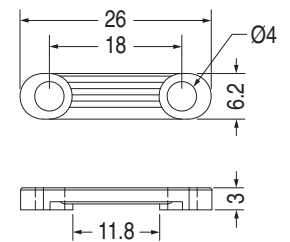
- Material: ABS (UL)
- Flame Class: 94HB
- Color: Black

Part No.	Package
CLT-8	1000



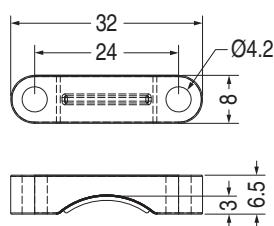
- Flame Class: 94HB
- Color: Black

Part No.	Package
CLT-6	1000

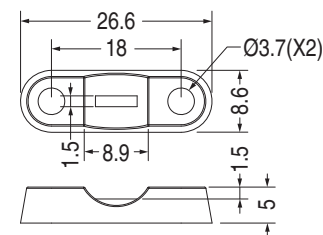


- Material: PBT (UL)
- Flame Class: 94V-0
- Color: Natural

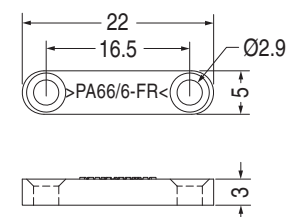
Part No.	Package
CLT-18	500



Part No.	Package
CLT-14	1000



Part No.	Package
CLT-20	1000



Part No.	Package
CLT-10	1000