

325540009-00 ✓ ACTIVE

MEAS | MEAS MS5540C

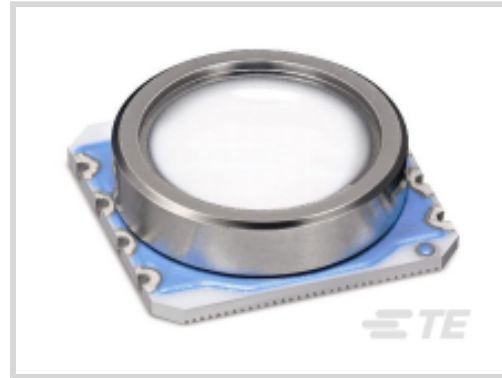
TE Internal #: 325540009-00

Digital Pressure and Altimeter Sensor Modules, Absolute, 1000 mbar, Output/Span 16 bit ADC,  $\pm 1.5$ mbar, Supply Voltage 2.2 – 3.6 V, MEAS MS5540C

[View on TE.com >](#)



[Sensors](#) > [Pressure Sensors](#) > [Board Mount Pressure Sensors](#) > [Miniature Barometer Sensor](#)



Board Level Pressure Sensor Type: **Digital Pressure and Altimeter Sensor Modules**

Board Level Pressure Sensor Style: **Absolute**

Pressure: **1000 mbar**

Output/Span: **16 bit ADC**

Board Level Pressure Sensor Accuracy:  **$\pm 1.5$ mbar**

[All Miniature Barometer Sensor \(2\)](#)

## Features

### Product Type Features

Board Level Pressure Sensor Type	Digital Pressure and Altimeter Sensor Modules
Board Level Pressure Sensor Style	Absolute

### Electrical Characteristics

Board Level Pressure Sensor Supply Voltage	2.2 – 3.6 V
--------------------------------------------	-------------

### Dimensions

Dimensions	6.2 x 6.4 mm [.24 x .25 in]
------------	-----------------------------

### Usage Conditions

Operating Temperature Range	-40 – 85 °C [-40 – 185 °F]
-----------------------------	----------------------------

### Operation/Application

Resolution	.1
Pressure	1000 mbar
Output/Span	16 bit ADC
Board Level Pressure Sensor Accuracy	$\pm 1.5$ mbar

### Packaging Features

Board Level Pressure Sensor Package	Surface Mountable
-------------------------------------	-------------------

## Other

Sensor Options

No Option

## Product Compliance

[For compliance documentation, visit the product page on TE.com>](#)

EU RoHS Directive 2011/65/EU

Compliant

EU ELV Directive 2000/53/EC

Compliant

China RoHS 2 Directive MIIT Order No 32, 2016

No Restricted Materials Above Threshold

EU REACH Regulation (EC) No. 1907/2006

Current ECHA Candidate List: JUNE 2023  
(235)  
Candidate List Declared Against: JAN 2023  
(233)  
Does not contain REACH SVHC

Halogen Content

Not Yet Reviewed for halogen content

Solder Process Capability

Not reviewed for solder process capability

### Product Compliance Disclaimer

This information is provided based on reasonable inquiry of our suppliers and represents our current actual knowledge based on the information they provided. This information is subject to change. The part numbers that TE has identified as EU RoHS compliant have a maximum concentration of 0.1% by weight in homogenous materials for lead, hexavalent chromium, mercury, PBB, PBDE, DBP, BBP, DEHP, DIBP, and 0.01% for cadmium, or qualify for an exemption to these limits as defined in the Annexes of Directive 2011/65/EU (RoHS2). Finished electrical and electronic equipment products will be CE marked as required by Directive 2011/65/EU. Components may not be CE marked. Additionally, the part numbers that TE has identified as EU ELV compliant have a maximum concentration of 0.1% by weight in homogenous materials for lead, hexavalent chromium, and mercury, and 0.01% for cadmium, or qualify for an exemption to these limits as defined in the Annexes of Directive 2000/53/EC (ELV). Regarding the REACH Regulation, the information TE provides on SVHC in articles for this part number is based on the latest European Chemicals Agency (ECHA) 'Guidance on requirements for substances in articles' posted at this URL: <https://echa.europa.eu/guidance-documents/guidance-on-reach>

## Compatible Parts

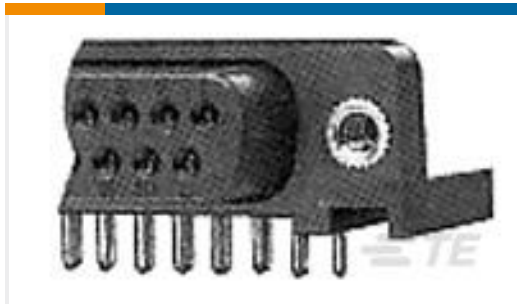


Also in the Series | [MEAS MS5540C](#)



Board Mount Pressure Sensors(2)

## Customers Also Bought

TE Part #5788802-1  
37 HTMSFL ASSY RA 318 (IN,BL)TE Part #5788794-1  
25 HTMSFL PLUG RA 318 (IN,BL)TE Part #747843-4  
37 MSFL PLUG RA 318 (IN,FM,BL)TE Part #2199249-3  
Shield Finger, Loose Piece, Type B, 2.0 hTE Part #1-534206-3  
26 MODII VRT DR CE 100/115TE Part #87N-1000A-0R  
MV Pressure Sensor, Compensated,  
87NCTE Part #103956-3  
5X4 MTE RCPT SR LATCH .100CLTE Part #86-300A-R  
NISO,LP,ABS,RIBBON CABLE

## Documents

### CAD Files

#### 3D PDF

3D

#### Customer View Model

[ENG\\_CVM\\_CVM\\_325540009-00\\_A.2d\\_dxf.zip](#)

English

#### Customer View Model

[ENG\\_CVM\\_CVM\\_325540009-00\\_A.3d\\_igs.zip](#)

English

#### Customer View Model

[ENG\\_CVM\\_CVM\\_325540009-00\\_A.3d\\_stp.zip](#)

English

By downloading the CAD file I accept and agree to the [Terms and Conditions](#) of use.

### Datasheets & Catalog Pages

#### Data sheet

English

