

PRODUCT NUMBER

5 2 6 0 1 - X X X - X X X X X L F

PLATING

- S=15μm [0.38μm] GOLD ON CONTACT AREA (NOTE 13)
- 100μm [2.54μm] TIN ON TAIL
- G=30μm [0.76μm] GOLD ON CONTACT AREA (NOTE 13)
- 100μm [2.54μm] TIN ON TAIL
- 1=30μm [0.76μm] Au PLATING

LEAD FREE OPTION
NOTE 10,11,12

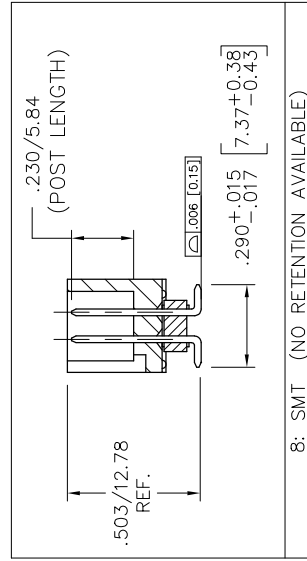
PACKAGE NOTE 5

RETENTIVE LEG (NOTE 6)
R=

POLARIZATION
NOTE 9

TAIL	
1	.099/2.29...OBS.
2	.112/2.84...OBS.
4	.120/3.05
6	.150/3.81
7	.675/17.15...OBS.
8	SMT

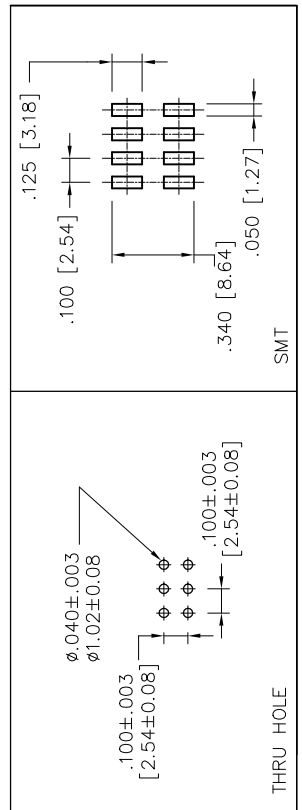
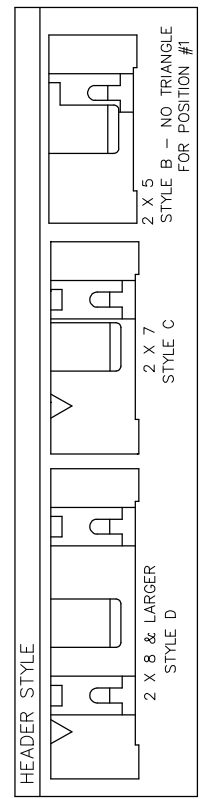
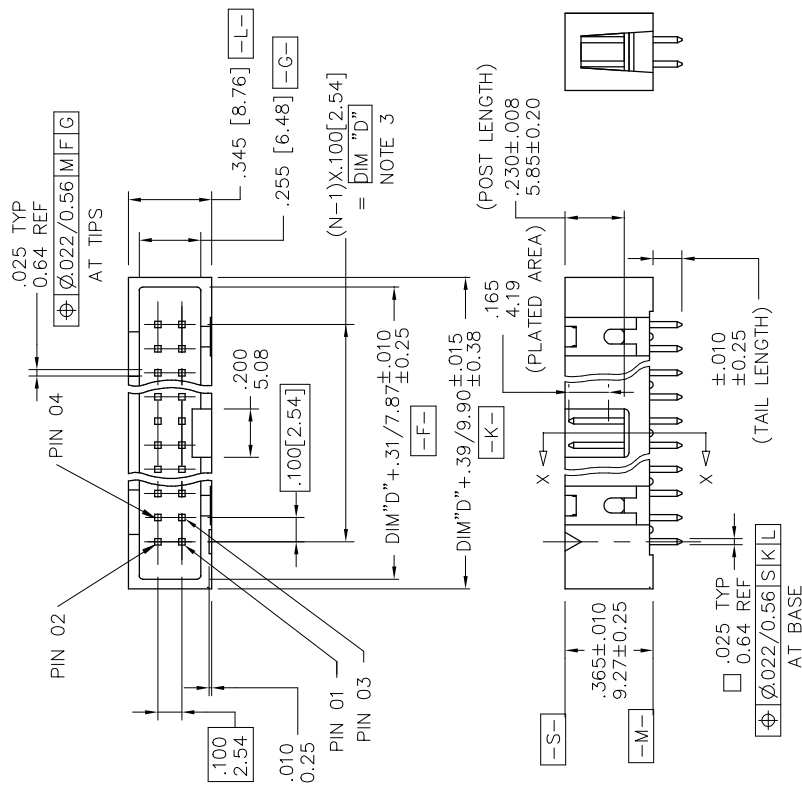
TOTAL POSITIONS	HDR. STYLE
10	2 x 5 B
14	2 x 7 C
16	2 x 8 D
20	2 x 10 D
26	2 x 13 D
30	2 x 15 D
34	2 x 17 D
40	2 x 20 D
44	2 x 22 D
50	2 x 25 D
60	2 x 30 D



NOTES:

- HOUSING MAT'L: HIGH TEMPERATURE THERMOPLASTIC: UL94V-0
COLOR: BLACK
OR
MINERAL FILLED LCP FLAME RETARDENT
PER UL-94V-0. COLOR: BLACK.
- PIN MATERIAL: PHOSPHOR-BRONZE
- TO DETERMINE DIMENSIONS:
N = NUMBER OF POSITIONS PER ROW
EXAMPLE: 10 POS., (N-1) x .100[2.54]= 900[22.86]
- 3 LBS./1.36 KG MIN. RETENTION
- PACKAGED IN TRAYS.
PART NUMBER FOLLOWS BY "T" SUFFIX ARE PACKAGED
TAPE ON REEL WITH PACK-UP INSTALLED. VACUUM CAP TO BE
CENTRALLY LOCATED REGARDLESS OF NUMBER OF POSITIONS (SHEET 3)
- RETENTIVE LEG APPLICABLE TO TAIL LENGTHS .125/3.18 MAX.
5LB/2.3KG MAX INSERTION FORCE AND .25LB./1KG MIN RETENTION FORCE
PER RETENTIVE PIN USING .062/1.57 THICK CIRCUIT BOARD AND RECOMMENDED
HOLE PATTERN. RETENTIVE LOCATION AT THE DISCRETION OF THE MANUFACTURER.
RETENTION PIN MAY BE SHIFTED TO NEXT POSITION.
- OMIT FROM PRODUCT NUMBER IF THIS FEATURE IS NOT APPLICABLE.
- UNDERPLATING: 50μ"/1.27μm Ni.
- FOR POLARIZATION SPECIFY POSITION NUMBER (i.e. 03 = PIN 3) TO OMIT PIN.
OMIT FROM PRODUCT NUMBER IF THIS FEATURE IS NOT APPLICABLE.
- ADD "LF" SUFFIX AT THE END OF PART NUMBER FOR LEAD FREE OPTION.
- THE HOUSING WILL WITHSTAND EXPOSURE TO 260°C PEAK TEMPERATURE
FOR 15 SECONDS IN A WAVE SOLDER APPLICATION WITH A 1.5mm
MINIMUM THICK CIRCUIT BOARD. SEE APPLICATION NOTES/PROCEDURES
IF THEY ARE AVAILABLE.
- THE HOUSING WILL WITHSTAND EXPOSURE TO 260°C PEAK TEMPERATURE
FOR 20 SECONDS IN A CONVECTION, INFRA-RED OR VAPOR PHASE
REFLOW OVEN. SEE APPLICATION NOTES/PROCEDURES IF THEY ARE AVAILABLE.
- THIS PRODUCT MEETS EUROPEAN UNION DIRECTIVES AND OTHER
COUNTRY REGULATION AS DESCRIBED IN GS-22-008.
- PLATING OPTIONS:
MAY BE EITHER GOLD OR GXT PLATED AT MANUFACTURER'S OPTION.

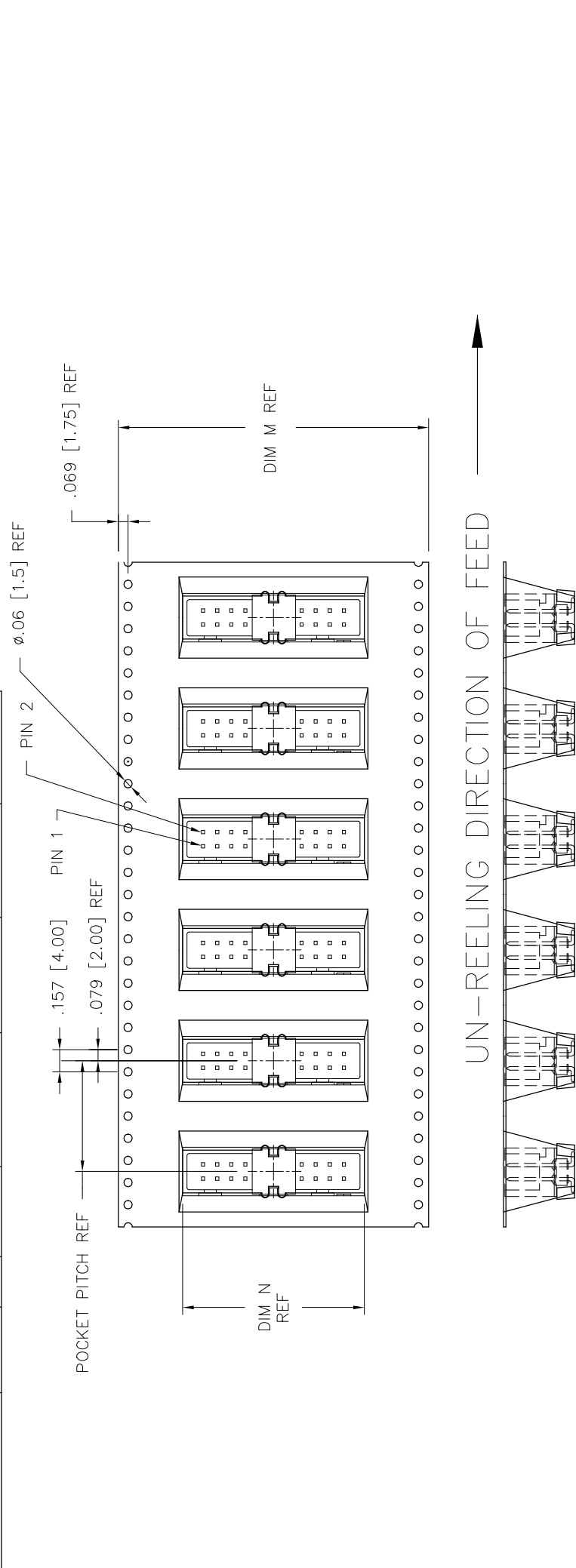
mat'l. code NOTES 1		surface	tolerance	projection	product family
tr	ecr no	dr	date	ISO 1302	QUICKIE
V	M08-0281	MHT	09/30/08	ISO 1101	title
W	N08-0279	MHT	09/30/08	tolerances unless otherwise specified	0.100/2.54MM LOW PROFILE
X	N10-0327	A.ZH	11/04/10	angles	SHOROUDED VERTICAL HEADER
Y	ELX-N-38872	MKX	2020-11-04	linear	dwg no
				0°±2°	sheet 1 of 3
				D.INGRAM	52601
				engr	A3
				L.GREEN	type
				chr	Product
				L.GREEN	Customer
				appd	Drawing
sheet	revision	Y	Y		
index	sheet	1	2	3	



mat'l. code		surface		projection		product family	
NOTES 1		ISO 1302		ASME Y14.5		QUICKIE	
tr	ecr no	dr	date	tolerance	angle	INCH/MM	title
V	M08-0281	MHT	09/30/08	ISO 1101	linear	Scale 1:1	0.100/2.54MM LOW PROFILE
W	N08-0279	MHT	09/30/08	tolerances unless otherwise specified	linear		SHROUDED VERTICAL HEADER
X	N10-0327	A.ZH	11/04/10	xxxx005/xxx13	linear		
Y	ELX-N-38872	MKX	2020-11-04	xxxx002/xxx199	0°±2°		
		dr	D.INGRAM	07/07/99			dwg no
		enfr	L.GREEN	07/12/99			sheet 2 of 3
		chr	L.GREEN	07/12/99			52601
		pppd	L.GREEN	07/21/99			type Product Customer
sheet	revision	See Sheet 1					Drawing
index	sheet	1	2	3			

PRODUCT No. NOTE 10	NO. OF POSITIONS	HSG. STYLE	POLARIZED POSITION	PACKAGING	POCKET PITCH	DIM M	DIM N
52601-S10-801T	2 X 5	B	01	TAPE-ON-REEL	0.787/20.00	1.260/32.00	0.790/20.07
52601-S10-805T	2 X 5	B	05	TAPE-ON-REEL	0.787/20.00	1.260/32.00	0.790/20.07
52601-S10-807T	2 X 5	B	07	TAPE-ON-REEL	0.787/20.00	1.260/32.00	0.790/20.07
52601-S14-807T	2 X 7	C	07	TAPE-ON-REEL	0.787/20.00	1.732/44.00	1.090/27.69
52601-S14-80714T	2 X 7	C	07,14	TAPE-ON-REEL	0.787/20.00	1.732/44.00	1.090/27.69
52601-X16-8T	2 X 8	D	-	TAPE-ON-REEL	0.787/20.00	1.732/44.00	1.090/27.69
52601-X20-8T	2 X 10	D	-	TAPE-ON-REEL	0.787/20.00	2.204/56.00	1.290/32.77
52601-X30-8T	2 X 15	D	-	TAPE-ON-REEL	0.787/20.00	2.834/72.00	1.786/45.37
52601-X40-8T	2 X 20	D	-	TAPE-ON-REEL	0.787/20.00	3.465/88.00	2.293/58.25

* SPECIAL CUSTOMER



mat'l. code		surface		projection		product family	
NOTES 1		ISO 1302		1st angle		QUICKIE	
ltr	ecr no	dr	date	tolerance		title	
V	M08-0281	MHT	09/30/08	ASD 101		0.100/2.54MM LOW PROFILE	
W	N08-0279	MHT	09/30/08	tolerances unless otherwise specified		SHROUDED VERTICAL HEADER	
X	N10-0327	A.ZH	11/04/10	.xxx01/xx.3		dwg no	
Y	ELX-N-38872	MX	2020-11-04	.xxx005/xxx.3		sheet 3 of 3 size	
				.xxx002/xxx.050		A3	
				.xxx002/xxx.050		type Product Customer Drawing	
sheet	revision	See Sheet 1		D.INGRAM		52601	
index	sheet	1 2 3		engr		52601	
				chr		52601	
				appd		52601	

Amphenol FCI		STATUS Released		Printed: Nov 16, 2020	
PDS: Rev : Y		4		5	
3		2		1	
D		C		B	
A		6		5	
1		4		3	