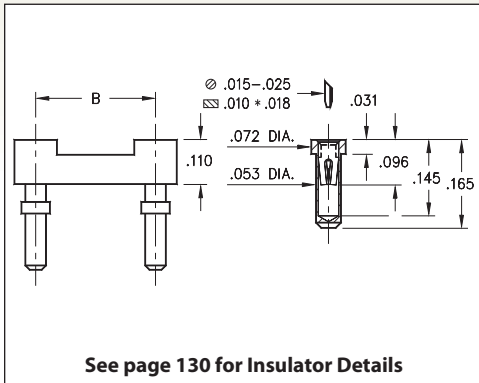
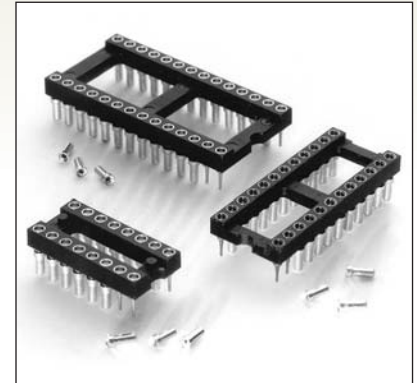


DUAL-IN-LINE SOCKETS

SERIES 614...001 • CARRIER TYPE, LOW PROFILE • OPEN FRAME



- Convenient way to load loose receptacles on a PC board
- Removable plastic carriers can be returned for reloading
- Hi-Rel, 4-finger BeCu #30 contact is rated at 3 amps. See page 253 for details
- Series 614 uses MM #1401 pins. See page 170 for details
- Insulators are high temperature thermoplastic, suitable for all soldering operations
- For Electrical, Mechanical and Environmental Data, see page 264 for details



ORDERING INFORMATION

Total number of pins	Pin Spacing			Quantity per tube	Part Number
	A	B	C		
10	0.5	0.2	0.3	40	614-XX-210-41-001000
4	0.2	0.3	0.4	102	614-XX-304-41-001000
6	0.3	0.3	0.4	67	614-XX-306-41-001000
8	0.4	0.3	0.4	50	614-XX-308-41-001000
10	0.5	0.3	0.4	40	614-XX-310-41-001000
14	0.7	0.3	0.4	28	614-XX-314-41-001000
16	0.8	0.3	0.4	25	614-XX-316-41-001000
18	0.9	0.3	0.4	22	614-XX-318-41-001000
20	1.0	0.3	0.4	20	614-XX-320-41-001000
22	1.1	0.3	0.4	18	614-XX-322-41-001000
24	1.2	0.3	0.4	16	614-XX-324-41-001000
28	1.4	0.3	0.4	14	614-XX-328-41-001000
20	1.0	0.4	0.5	20	614-XX-420-41-001000
22	1.1	0.4	0.5	18	614-XX-422-41-001000
24	1.2	0.4	0.5	16	614-XX-424-41-001000
28	1.4	0.4	0.5	14	614-XX-428-41-001000
32	1.6	0.4	0.5	12	614-XX-432-41-001000
24	1.2	0.6	0.7	16	614-XX-624-41-001000
28	1.4	0.6	0.7	14	614-XX-628-41-001000
32	1.6	0.6	0.7	12	614-XX-632-41-001000
36	1.8	0.6	0.7	11	614-XX-636-41-001000
40	2.0	0.6	0.7	10	614-XX-640-41-001000
42	2.1	0.6	0.7	9	614-XX-642-41-001000
48	2.4	0.6	0.7	8	614-XX-648-41-001000
50	2.5	0.6	0.7	8	614-XX-650-41-001000
52	2.6	0.6	0.7	7	614-XX-652-41-001000
50	2.5	0.9	1.0	8	614-XX-950-41-001000
52	2.6	0.9	1.0	7	614-XX-952-41-001000
64	3.2	0.9	1.0	6	614-XX-964-41-001000

XX=Plating Code
See Below



SPECIFY PLATING CODE XX =	91	93	41	43
Sleeve (Pin)	200 μ" Sn/Pb	200 μ" Sn/Pb	200 μ" Sn	200 μ" Sn
Contact (Clip)	10 μ" Au	30 μ" Au	10 μ" Au	30 μ" Au



Mouser Electronics

Authorized Distributor

Click to View Pricing, Inventory, Delivery & Lifecycle Information:

Mill-Max:

[614-93-964-41-001000](#) [614-93-952-41-001000](#) [614-93-950-41-001000](#) [614-93-652-41-001000](#) [614-93-650-41-001000](#) [614-93-648-41-001000](#) [614-93-642-41-001000](#) [614-93-640-41-001000](#) [614-93-636-41-001000](#) [614-93-632-41-001000](#) [614-93-628-41-001000](#) [614-93-624-41-001000](#) [614-93-432-41-001000](#) [614-93-428-41-001000](#) [614-93-424-41-001000](#) [614-93-422-41-001000](#) [614-93-420-41-001000](#) [614-93-328-41-001000](#) [614-93-324-41-001000](#) [614-93-322-41-001000](#) [614-93-320-41-001000](#) [614-93-318-41-001000](#) [614-93-316-41-001000](#) [614-93-314-41-001000](#) [614-93-310-41-001000](#) [614-93-308-41-001000](#) [614-93-306-41-001000](#) [614-93-304-41-001000](#) [614-93-210-41-001000](#) [614-43-964-41-001000](#) [614-43-952-41-001000](#) [614-43-950-41-001000](#) [614-43-652-41-001000](#) [614-43-650-41-001000](#) [614-43-648-41-001000](#) [614-43-642-41-001000](#) [614-43-640-41-001000](#) [614-43-636-41-001000](#) [614-43-632-41-001000](#) [614-43-628-41-001000](#) [614-43-624-41-001000](#) [614-43-432-41-001000](#) [614-43-428-41-001000](#) [614-43-424-41-001000](#) [614-43-422-41-001000](#) [614-43-420-41-001000](#) [614-43-328-41-001000](#) [614-43-324-41-001000](#) [614-43-322-41-001000](#) [614-43-320-41-001000](#) [614-43-318-41-001000](#) [614-43-316-41-001000](#) [614-43-314-41-001000](#) [614-43-310-41-001000](#) [614-43-308-41-001000](#) [614-43-306-41-001000](#) [614-43-304-41-001000](#) [614-43-210-41-001000](#) [614-41-640-41-001000](#)