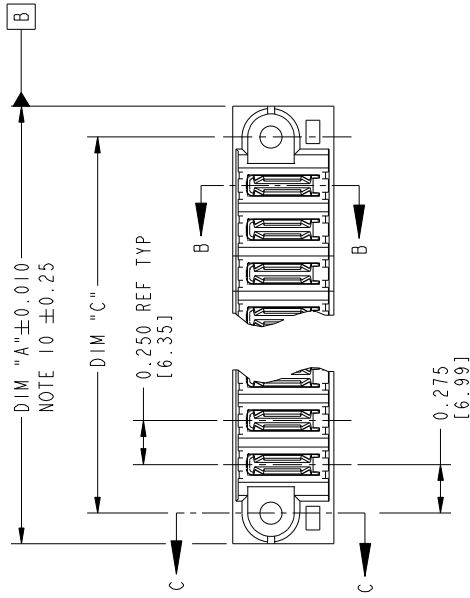
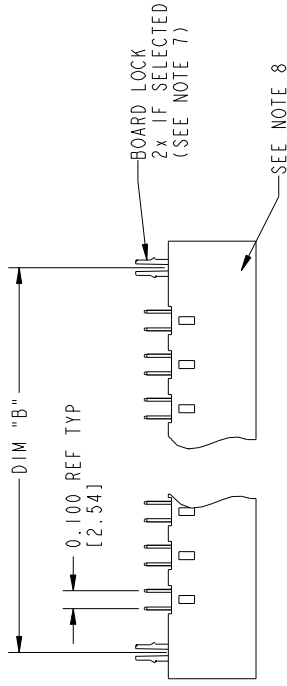


PRODUCT NUMBER
51703-ABB00000EF --
Note: ①
SEE NOTE 1



Tous droits strictement réservés. Reproduction ou communication à des tiers interdite sans quelque forme que ce soit sans autorisation écrite du propriétaire. Propriété de c FCI. Droits de reproduction FCI.

All rights strictly reserved. Reproduction or issue to third parties in any form whatever is not permitted without written authority from the proprietor. Property of FCI. Copyright FCI.

mat'l code		SEE NOTE 2		tolerances unless otherwise specified		CUSTOMER		FCI	
ltr	ecn no.	dr	date	linear	angles	projection	copy	title	www.fciconnect.com
A	V11839	JRW	07/09/01	.XX±.01/.X±.3	0°±2°	ASME Y14.5	COPY	VERTICAL HEADER w/GUIDE PIN POWER	
B	V12500	DAI	10-16-01	.XXX±.005/.XX±.13					
C	V12513	DAI	11-07-01	.XXX±.00207/.X±.051					
D	V21104	TAB	09-24-02	JRW	10-16-01	INCH/MM		product family	PWRBLADE
E	D605-0132	SJ	06/02/05	J-ALLISON	10-16-01	scale		dwg no	51703
F	D605-0193	SJ	06/24/05	J-ALLISON	10-16-01	1:1		size	213
G	D608-0239	JC	09/11/08	J-ALLISON	10-16-01			sheet	1 of 3
sheet index	revision	sheet	1	6	6				
			2	3					
			3						
			Pro/E			3		cage code 22526	
						4			

1 | 2 | 3 | 4

A

B

1 | 2

Pro/E

cage code 22526

4

Tous droits strictement réservés. Reproduction ou communication à des tiers interdite sans quelque forme que ce soit sans autorisation écrite du propriétaire. Property of FCI. All rights reserved. Reproduction or issue to third parties in any form whatsoever is not permitted without written authority from the proprietor.



All rights strictly reserved. Reproduction or issue to third parties in any form whatsoever is not permitted without written authority from the proprietor. Property of FCI. All rights reserved.

PRODUCT NUMBER	
51703-ABB00000EF --	
Note: ①	
SEE NOTE 1	

1 | 2

DIM	LENGTH FORMULAS (SEE NOTE 9)
DIM "A"	.250 [6.35] x BB + .650 [16.51] (NOTE 9)
DIM "B"	.250 [6.35] x BB + .350 [8.81]
DIM "C"	.250 [6.35] x BB + .300 [7.62]
DIM "F"	.250 [6.35] x BB + .680 [17.27]

3 |

4

CONNECTOR NOTES:

- ①. PRODUCT NUMBER CODE:
51703 - A BB 000 00 E F LF
NO THIS SUFFIX: 100µ"72.54µm SnPb ON PCB INTERFACE
ADD THIS SUFFIX: 78µ"72.00µm Sn ON PCB INTERFACE
RETENTION TO PCB (NOTE 7))
TAIL OPTIONS (NOTE 6)
ALWAYS "00" (ZERO,ZERO)
ALWAYS "000" (ZERO,ZERO,ZERO) (NOTE 5)
NUMBER OF POWER CONTACTS (NOTE 4)
PLATING (NOTE 3)
BASE NUMBER
- ②. HOUSING MATERIAL: UL94 V-0 GLASS FILLED HIGH TEMP THERMO PLASTIC
POWER CONTACT MATERIAL: COPPER ALLOY
- ③. PLATING OPTION:
1 = SEE PRINT 10064183 FOR PLATING SPEC OF 51703-1BB00000EF; 51703-1BB00000EFLF
- ④. POWER CONTACTS: .01 TO .20 AVAILABLE.
MAXIMUM OF 20 POWER CONTACTS PER CONNECTOR
- ⑤. THIS PART IS NOT AVAILABLE WITH SIGNAL CONTACTS.
- ⑥. TAIL OPTIONS:
A = 0.135 +0.015/-0.010 [3.43 +0.37/-0.25] SOLDER TO BOARD
B = 0.165 +0.015/-0.010 [4.19 +0.37/-0.25] SOLDER TO BOARD
C = 0.165 +0.015/-0.010 [4.19 +0.37/-0.25] PRESS FIT

- ⑦. RETENTION TO PCB OPTIONS:
A = BOARD LOCK (REQUIRES $\varnothing 0.098 \pm 0.002 / -0.001$ [2.49 +0.05/-0.03] THRU HOLE IN PCB).
(NOT AVAILABLE WITH PRESS-FIT)
C = NO RETENTION FEATURE
 - ⑧. MANUFACTURE'S NAME, P/N, AND DATE CODE TO APPEAR ON THIS SURFACE.
 - ⑨. THE MAXIMUM OVERALL LENGTH (DIM A) OF A PART IS 8.00 [203.2]
 - 10. PRODUCT SPECIFICATION 65-12-149
 - 11. DIMENSIONS AND TOLERANCES ARE IN ACCORDANCE WITH ASME Y14.5M, 1994 UNLESS OTHERWISE SPECIFIED.
- PCB NOTES:
- 12. ALL DIMENSIONS ARE BASIC UNLESS OTHERWISE SPECIFIED.
 - 13. ALL THROUGH HOLES ARE LOCATED WITH A TRUE POSITION OF 0.004 [0.101]
 - 14. ALL HOLE DIAMETERS ARE FINISHED HOLE SIZE.
 - 15. $\varnothing 0.098$ [2.49] THROUGH HOLES ARE UNPLATED
 - 16. $\varnothing 0.0453 \pm 0.0010$ [1.151 ± 0.025] DRILLED HOLES PLATED WITH 0.0003 [0.008] MIN SnPb OVER 0.001 [0.03] TO 0.003 [0.08] Cu PLATING TO ACHIEVE A $\varnothing 0.040 \pm 0.003$ [1.02 ± 0.07] HOLE.
 - 17. FOR PRESSFIT APPLICATION USE C1 CAM TOOL 430169-XXX.
 - 18. A \varnothing SYMBOL WILL BE NEXT TO ANY DIMENSION, VIEW, OR NOTE WHICH HAS BEEN MODIFIED WITH THE CURRENT DRAWING REVISION.

A

A

mat'l code		SEE NOTE 2		tolerances unless otherwise specified		CUSTOMER		FCI		www.fciconnect.com	
lir	ecm no.	dr	date	linear	.XX±.01/ .X±.3	projection	copy	title		VERTICAL HEADER w/GUIDE PIN POWER	
0				angles	.XXX±.005/ .XX±.13	$0^{\circ} \pm 2^{\circ}$		product family		PWRBLADE code	
				dr	JRW 10-16-01	JRW 10-16-01		dwg no		51703 sheet	
				enrg	J-ALLISON 10-16-01	J-ALLISON 10-16-01		scale		A 3:2 2 of 3	
				chr	J-ALLISON 10-16-01	J-ALLISON 10-16-01		PWRBLADE		2 of 3	
sheet index	revision	sheet		appd	J-ALLISON 10-16-01	J-ALLISON 10-16-01		code		22526 4	
								cage code		22526 4	

1 | 2

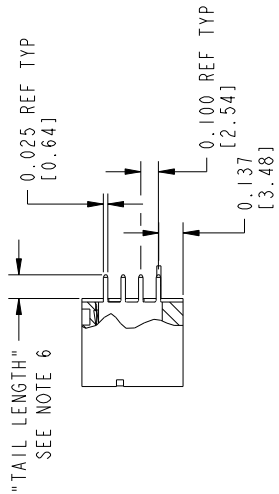
Pro/E

3 |

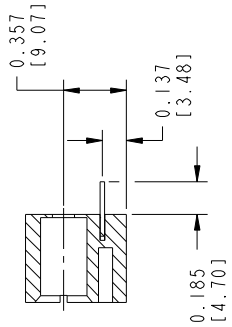
4

PRODUCT NUMBER
51703-ABB00000EF --
Note: ①
SEE NOTE 1

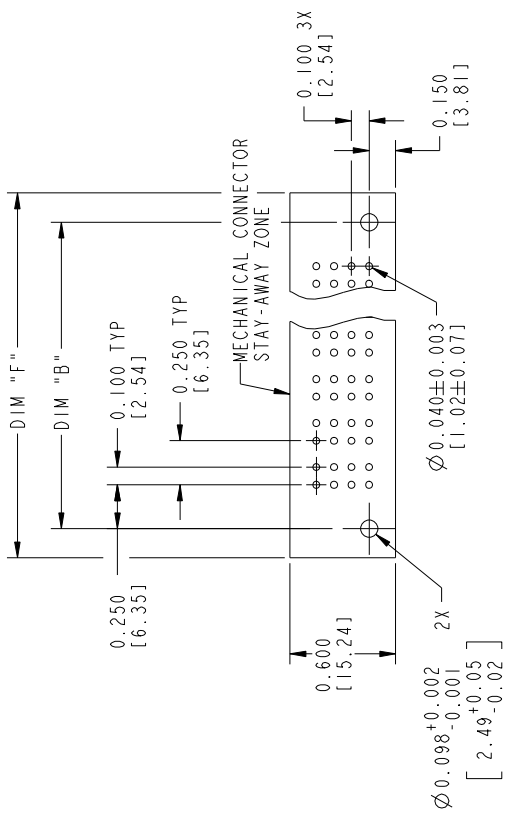
1 | 2 | 3 | 4



SECTION B-B



SECTION C-C



RECOMMENDED PCB LAYOUT



All rights strictly reserved. Reproduction or issue to third parties in any form whatever is not permitted without written authority from the proprietor.

Tous droits strictement réservés. Reproduction ou communication à des tiers interdite sans quelque forme que ce soit sans autorisation écrite du propriétaire.

mat'l code		SEE NOTE 2		tolerances unless otherwise specified		CUSTOMER		FCI	
lfr	ecm no.	dr	date	linear	angles	projection	scale	product family	product size
6				.XX±.01/.X±.3	0°±2°	1st angle	1:1	VERTICAL HEADER w/GUIDE PIN POWER	213
				.XXX±.005/.XX±.13				www.fciconnect.com	sheet
				.XXXX±.0020/.X±.051					3 of 3
								PWRBLADE code	213
								dwg no	51703
sheet index	revision	sheet						code	3 of 3
			Pro/E					cage code	22526
									4

1 | 2 | 3 | 4