



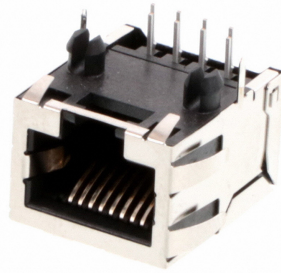
**Part Number :** [432028927](#)

**Product Description :** Modular Jack, Right-Angle, Low Profile, Shielded, All Panel Grounding Tabs, with Bottom Grounding Tab, Rear Position PCB Ground Tab, 8/8

**Series Number :** 43202

**Status :** Active

**Product Category :** Modular Jacks and Plugs



---

## Documents & Resources

### Drawings

[Drawing 432028927\\_sd.pdf](#)

[Packaging Design Drawing PK-43202-004-001.pdf](#)

### 3D Models and Design Files

[3D Model 432028927\\_stp.zip](#)

### Specifications

[Product Specification PS-43202-001-001.pdf](#)

---

## Product Environment Compliance

### Compliance

GADSL/IMDS	Not Relevant
China RoHS	
EU ELV	Not Relevant
Low-Halogen Status	Low-Halogen per IEC 61249-2-21
REACH SVHC	Not Contained per D(2023)3788-DC (14 Jun 2023)
EU RoHS	Compliant per EU 2015/863

### Multiple Part Product Compliance Statements

- Eu RoHS
- REACH SVHC
- Low-Halogen

### Multiple Part Industry Compliance Documents

- IPC 1752A Class C
- IPC 1752A Class D

- Molex Product Compliance Declaration
- IEC-62474
- chemSHERPA (xml)

EU RoHS Certificate of Compliance

---

## Part Details

### General

Status	Active
Category	Modular Jacks and Plugs
Series	43202
Description	Modular Jack, Right-Angle, Low Profile, Shielded, All Panel Grounding Tabs, with Bottom Grounding Tab, Rear Position PCB Ground Tab, 8/8
Comments	Enhanced panel grounding tabs
Component Type	PCB Jack
Magnetic	No
Performance Category	3
Power over Ethernet (PoE)	N/A
Product Family	Magnetic and Modular Jacks/Plugs
Product Name	Modular Jack 8/8,RJ45
UPC	800754883382

### Agency

CSA	LR19980
UL	E107635

### Electrical

Current - Maximum per Contact	1.5A
Grounding to Panel	Yes
Grounding to PCB	Yes
Shielded	Yes
Voltage - Maximum	150V AC (RMS)

### Physical

Color - Resin	Black
Durability (mating cycles max)	500
Flammability	94V-0
Inverted / Top Latch	No
Jack Height	12.09mm
Lightpipes/LEDs	None
Material - Metal	Brass, Phosphor Bronze
Material - Plating Mating	Gold
Material - Plating Termination	Tin
Material - Resin	High Temperature Thermoplastic
Net Weight	4.297/g
Orientation	Right Angle (Side Entry)
Packaging Type	Tray
PCB Retention	Yes
PCB Thickness - Recommended	1.57mm
Pitch - Mating Interface	1.02mm
Pitch - Termination Interface	1.27mm
Plating min - Mating	1.270µm
Plating min - Termination	2.540µm
Port Configuration	1x1
Positions / Loaded Contacts	8/8
Temperature Range - Operating	-40° to +85°C
Termination Interface Style	Through Hole
Wire/Cable Type	N/A

### Solder Process Data

Max-Duration	5
Lead-Free Process Capability	WAVE
Max-Cycle	1
Max-Temp	260

---

### Mates With / Use With

#### Mates with Part(s)

Description	Part Number
-------------	-------------

Mates With	FCC 68 Plugs
------------	--------------

---

This document was generated on Dec 11, 2023