

REVISIONS					
P	LTR	DESCRIPTION	DATE	DWN	APVD
	E2	ECR-19-006127	10APR2019	RZ	RS

NOTES:

- 1

SINGLE PACK IN ACCORDANCE WITH AMP SPEC 107-3275
- 2

100 TRAY PACK IN ACCORDANCE WITH AMP SPEC 107-3275
- 3

FLASH Au PLATING
- 4

0.8µm Au PLATING
- 5

Ni PLATING
- 6

THIS ITEM MUST BE WHITE

7.

HAND TOOL :

9-1478240-0
8.

DIE SET :

9-1478242-0

9.

ELECTRICAL CHARACTERISTICS

FREQUENCY RANGE:DC - 4 GHz

NOMINAL IMPEDANCE:50 Ohm

INSULATION RESISTANCE:5000 MOhm

WORKING VOLTAGE:500 Volts RMS at Sea Level

DIELECTRIC WITHSTAND VOLTAGE:1500 Volts RMS Max

CONTACT RESISTANCE:

CENTRE CONTACT:1.50 mOhm Max

OUTER CONTACT:0.20 mOhm Max

VSWR @ 4GHz:1.30:1 Max

INSERTION LOSS dB @ x 3 GHz:0.20 Max

10.

MECHANICAL CHARACTERISTICS

COUPLING NUT RETENTION FORCE:445N Min

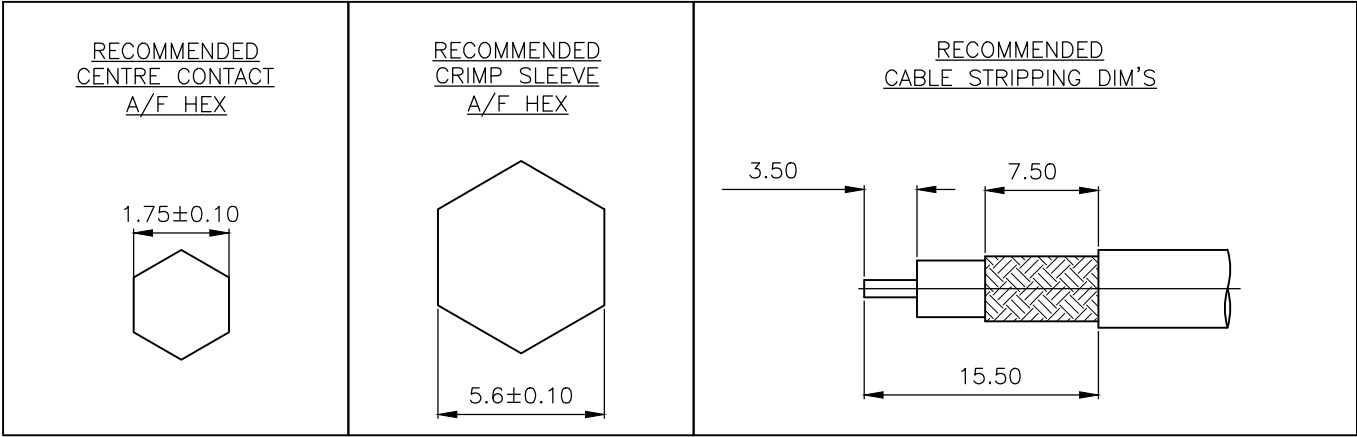
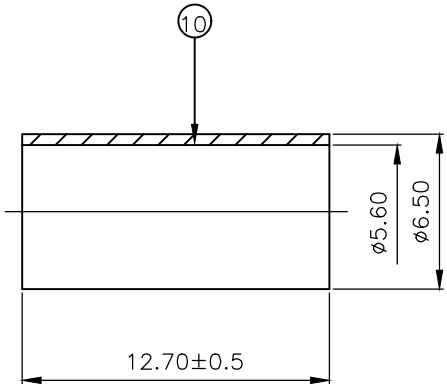
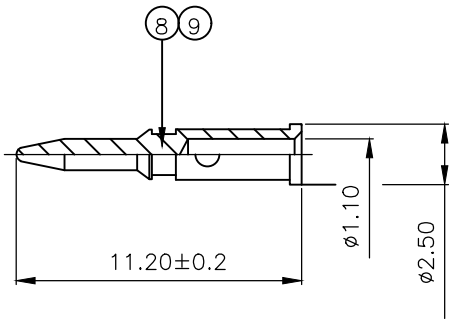
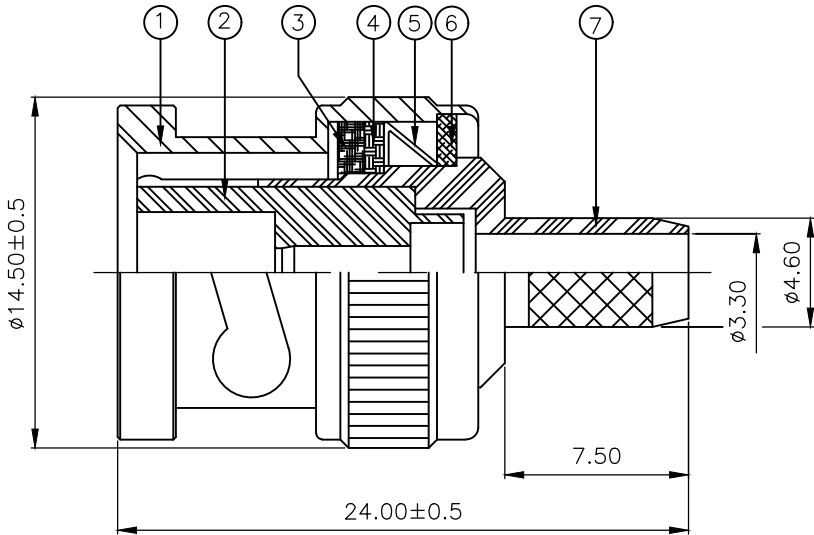
CABLE RETENTION FORCE:120N Min

DURABILITY:500 Cycles Min

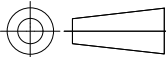
11.

ENVIRONMENTAL CHARACTERISTICS

OPERATING TEMPERATURE:-65 to +165 DegC



1	1	1	1	BRASS	5	FERRULE	10
1	1	-	-	BRASS	4	CONTACT	9
-	-	1	1	BRASS	3	CONTACT	8
1	1	1	1	BRASS	5	BODY	7
1	1	1	1	BRASS	5	WASHER	6
1	1	1	1	SPRING STEEL		SPRING	5
1	1	1	1	BRASS	5	WASHER	4
1	1	1	1	SILICON RUBBER	6	GASKET	3
1	1	1	1	PTFE		INSULATION	2
1	1	1	1	BRASS	5	SHELL	1
6--1	1--1	6--0	1--0	MATERIAL		DESCRIPTION	ITEM
2	1	2	1				
QUANTITY PER ASSY				PARTS LIST			

THIS DRAWING IS A CONTROLLED DOCUMENT.		DWN J.SANDWELL CHK S.PARLOW APVD F.WHEELER-KING PRODUCT SPEC — APPLICATION SPEC 411-3247 WEIGHT 0.000000		12SEPT05 12SEPT05 12SEPT05		<div><div><div>TE</div><div>TE Connectivity</div></div></div>					
DIMENSIONS: mm		TOLERANCES UNLESS OTHERWISE SPECIFIED:		NAME BNC STRAIGHT PLUG CRIMP 50 OHM RG58C/U, 141A/U, URM 43 & 76, KX15 BELDEN 9907							
		0 PLC ± — 1 PLC ± — 2 PLC ± 0.1 3 PLC ± — 4 PLC ± — ANGLES ± —									
MATERIAL SEE TABLE		FINISH SEE TABLE		SIZE A3		CAGE CODE 00779		DRAWING NO C-1337426		RESTRICTED TO —	
CUSTOMER DRAWING						SCALE NTS		SHEET 1 OF 1		REV E2	

Mouser Electronics

Authorized Distributor

Click to View Pricing, Inventory, Delivery & Lifecycle Information:

[TE Connectivity:](#)

[1-1337426-0](#)