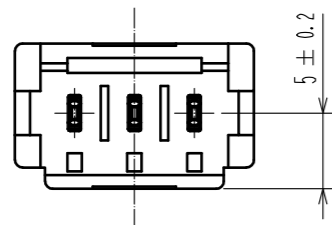
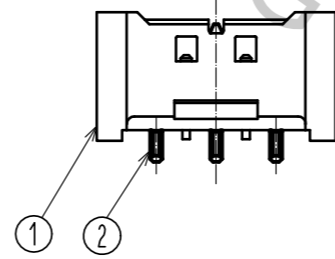
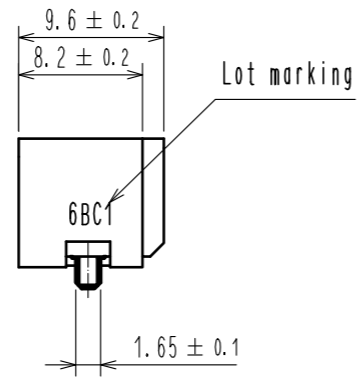
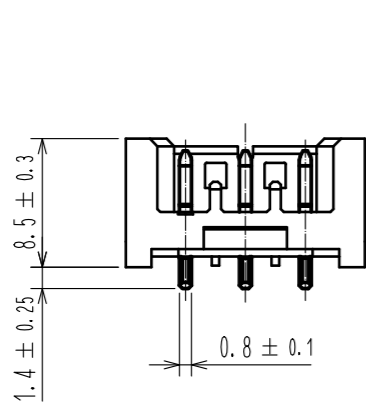
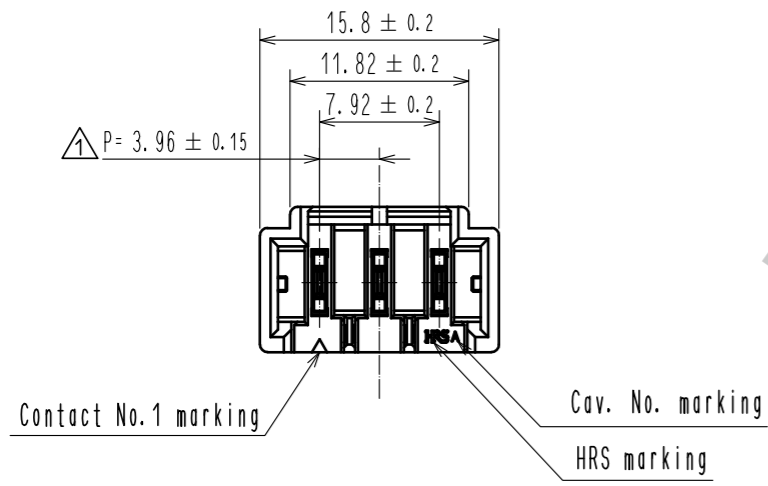
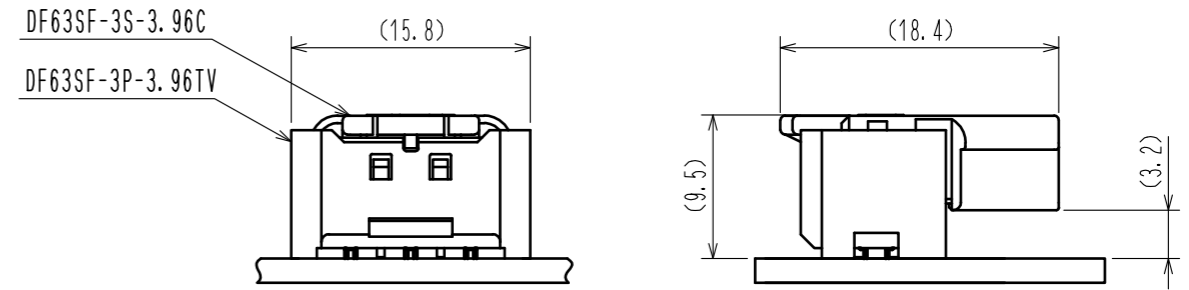


Oct.1.2018 Copyright 2018 HIROSE ELECTRIC CO., LTD. All Rights Reserved.
 In case that the application demands a high level of reliability, such as automotive,
 please contact a company representative for further information.

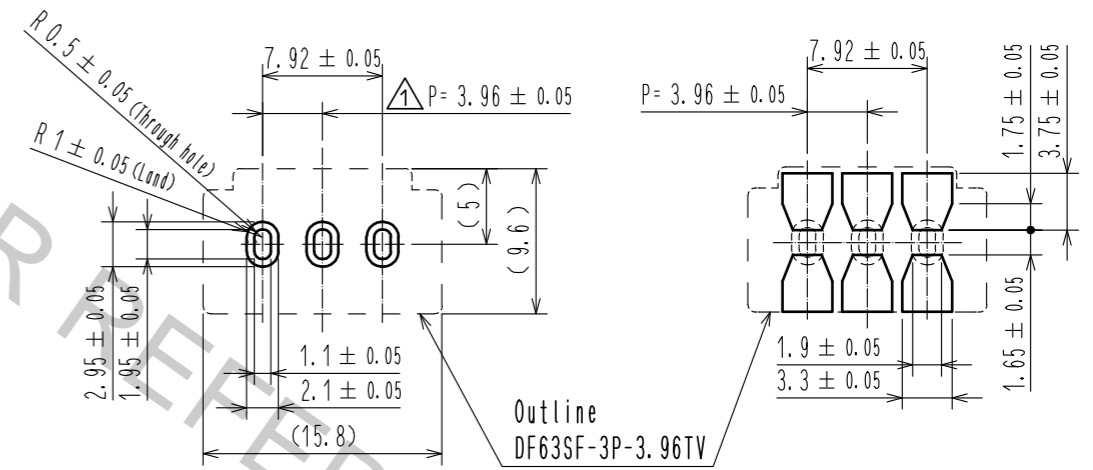


Mating figure



Recommended Pattern
 Recommended Board Thickness (t=1.6mm)

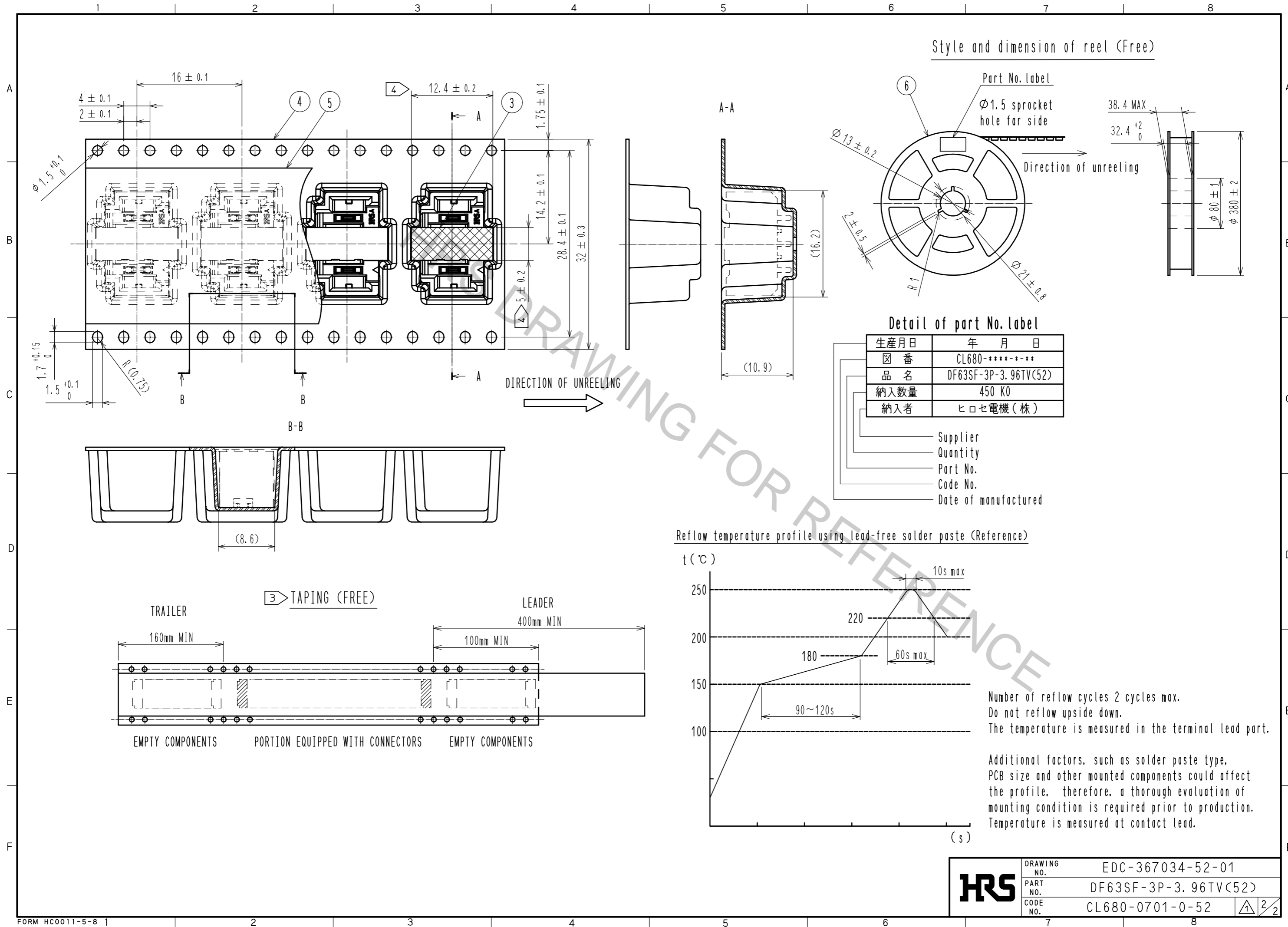
Recommended metal mask
 (Thickness : 0.15mm)



- Note 1. 1 reel : 450 connectors
 2. The dimensions in parentheses are for reference.
 3. Reel to JIS C 0806. (Packaging of components for automatic handling)
 4. The dimensions are Vacuum area

3	PA	UL94V-0(BLACK)	6	PS	Reel . Black		
2	Copper alloy	Surface : Au plating 0.76 μm MIN Under plating : Nickel plating 0.5 μm MIN	5	Polyester	Clear [Cover tape]		
1	LCP	UL94V-0(BLACK)	4	PS	Clear [Embossed carrier tape]		
NO.	MATERIAL	FINISH . REMARKS	NO.	MATERIAL	FINISH . REMARKS		
UNITS mm		SCALE 2 : 1	COUNT 2	DESCRIPTION OF REVISIONS DIS-H-00002832	DESIGNED SZ. ONO	CHECKED ST. WADA	DATE 17. 05. 18
HRS HIROSE ELECTRIC CO., LTD.		APPROVED : HS. OKAWA 16. 12. 09	DRAWING NO. EDC-367034-52-01				
		CHECKED : YN. TAKASHITA 16. 12. 08	PART NO. DF63SF-3P-3. 96TV(52)				
		DESIGNED : SANGMUK. LIM 16. 12. 08	CODE NO. CL680-0701-0-52				
		DRAWN : SANGMUK. LIM 16. 12. 08					

Oct.1.2018 Copyright 2018 HIROSE ELECTRIC CO., LTD. All Rights Reserved.
 In case that the application demands a high level of reliability, such as automotive,
 please contact a company representative for further information.



HRS	DRAWING NO.	EDC-367034-52-01
	PART NO.	DF63SF-3P-3.96TV(52)
	CODE NO.	CL680-0701-0-52
		2/2