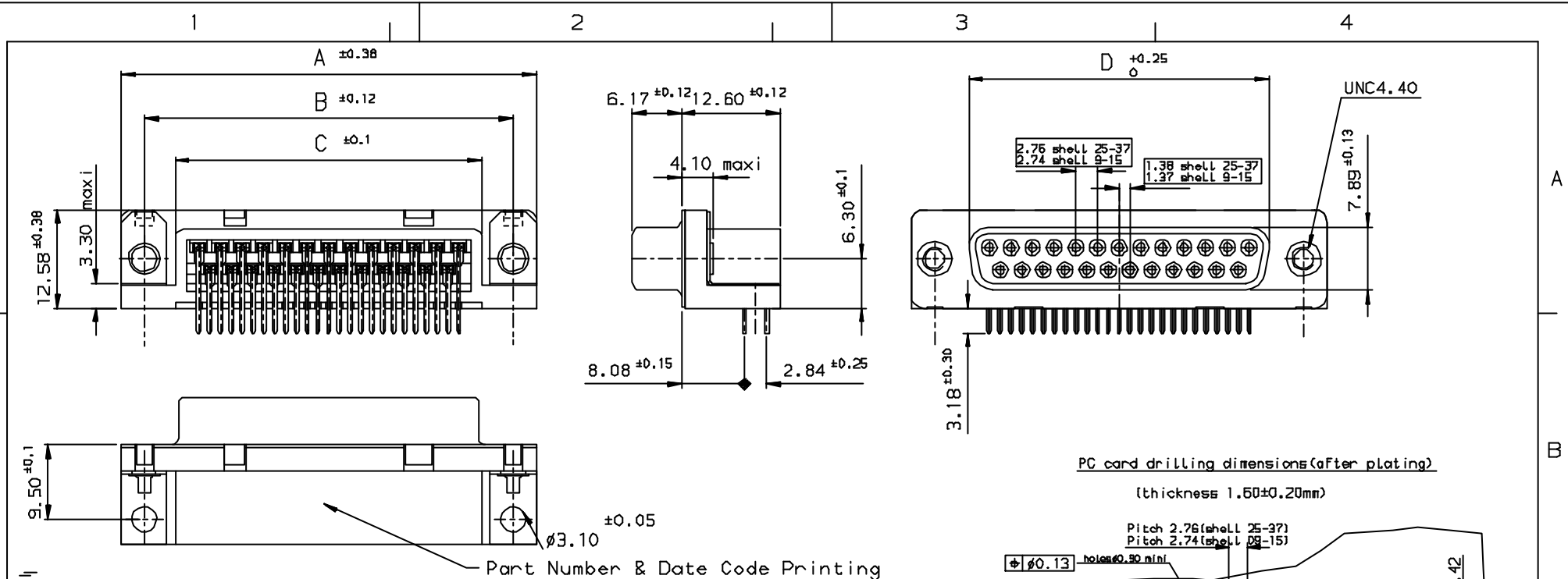


Tous droits strictement réservés. Reproduction ou communication a des tiers interdite sans autorisation écrite de la Direction des ventes. Propriété de FCI. Droits de reproduction FCI.

**FCI**

All rights strictly reserved. Reproduction or issues in third parties in any form without the written authorisation from the proprietor. Property of FCI. Copyright FCI.



		PART NUMBER							
SHELL	A±0.38	B±0.12	C±0.10	D±0.25	E±0.07	Plating:0.76µ AU	Plating:Flash AU		
09	30.81	24.99	16.95	16.21	10.96	D09S33E6UX00**	D09S33E4UXD0**		
15	39.14	33.32	25.18	24.54	19.18	D15S33E6UX00**	D15S33E4UXD0**		
25	53.03	47.04	39.12	38.25	33.12	D25S33E6UX00**	D25S33E4UXD0**		
37	69.32	63.50	55.68	54.71	49.68	D37S33E6UX00**	D37S33E4UXD0**		

**REQUIREMENTS**

Technical characteristics:

Shell: steel tin plated  
 Insulators: self-extinguishing black polyster, UL Class 94V0  
 Contacts size 20: phosphor bronze, gold 0.76µ on mating end, bright tin on termination end over nickel on entire contact  
 Cycles > 500 .

Metal plate for electrical continuity: brass, tin plated  
 Nuts: brass, tin plated

Electrical characteristics:

max. current rating: 5A  
 Test voltage: 1000V  
 Rated voltage: 300V  
 Contact resistance: ≤15mΩ  
 Shell resistance: ≤5mΩ  
 Insulation resistance: >5000MΩ

Climatic characteristics:

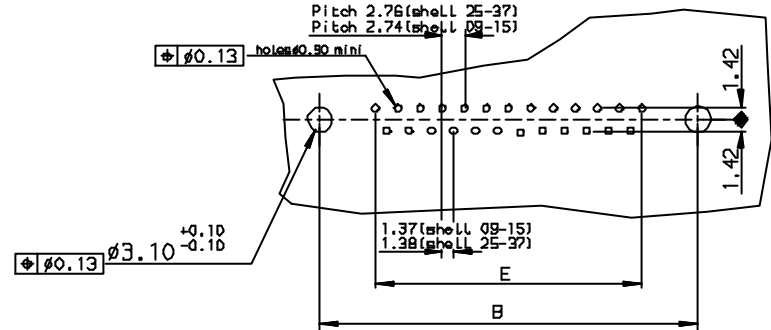
Operating temperature range: -55°C +125°C

Dimensions:

in accordance with MIL-C-24308

LF FOR LEAD FREE

FOR R0HS DETAILS REFER DWG. NO. C01-8646-0000



Utr	Eon no	Dr	date
1	005-0124	JS	27/7/05

Dr JOHN SLEEBA		7/1/03	Product Family	D-SUB	Tolerance LINEAR ±0.1 ANGULAR ±1°	Projection	MM
Eng GEORGE VJ		7/1/03	Spec ref			Size	A3
Chr GEORGE VJ		27/7/05	Material			Scale	
Appr K Somasundaram		27/7/05				ECN	
<b>FCI</b>		Title		Socket CONNECT.DELTA D right angle with nut & metal plate		Dwg no	
						C01-8646-0148	
		Catalog no		DELTA-D		Rev.	
						c	
		CUSTOMER COPY		Sheet 1 of 1			

INDEX	DATE	REVISION DESCRIPTION
c	27/7/05	LEAD FREE DETAILS ADDED