

# Clevis mounting MP2-BV, Series CM1

- Cylinder mounting in accordance with ISO 15552

- Suitable piston Ø 32 40 50 63 80 100 mm



Standards

ISO 15552

## Technical data

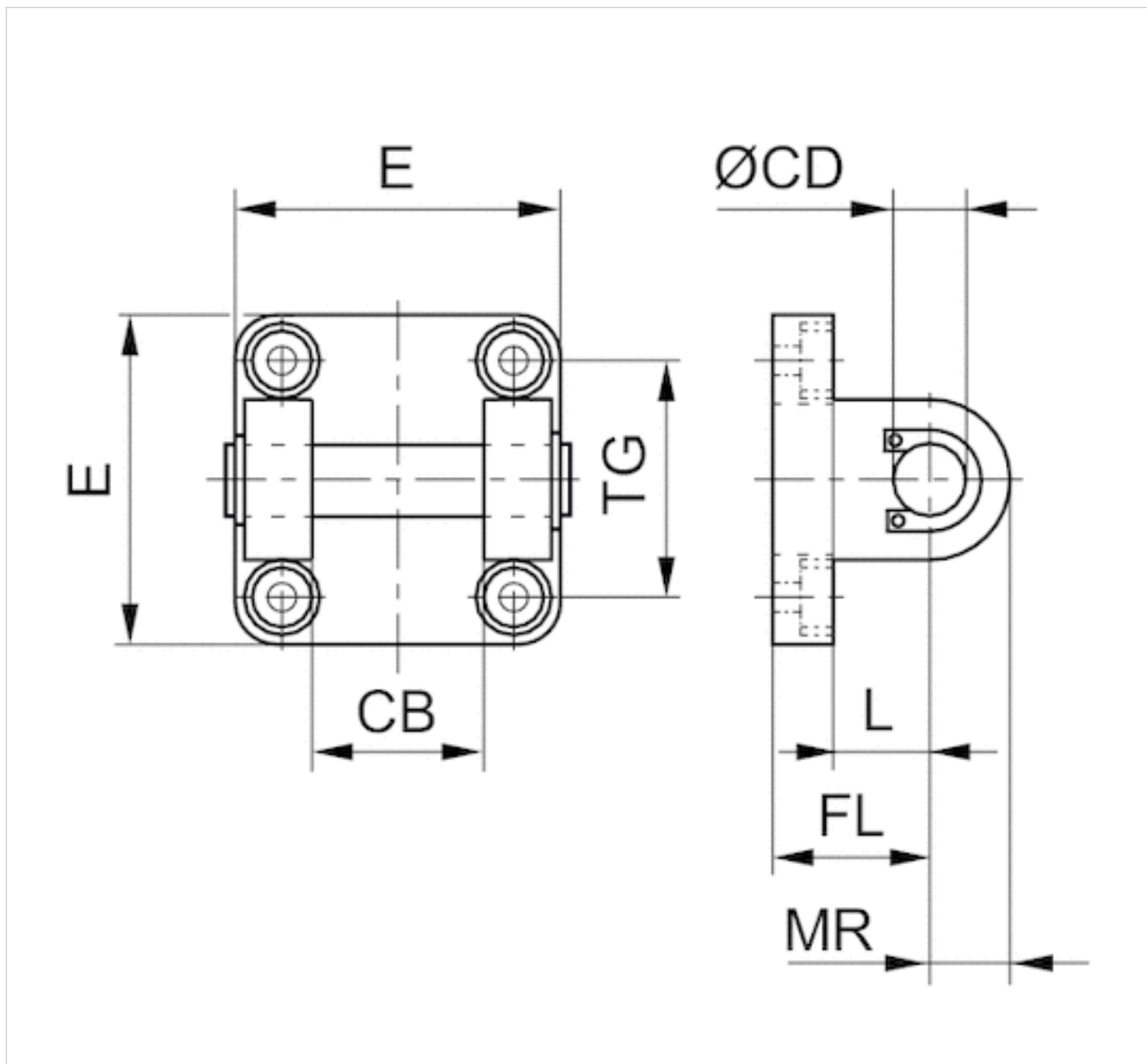
Part No.	Piston Ø	Swivel bearing Ø
R412027402	32 mm	10 mm
R412027403	40 mm	12 mm
R412027404	50 mm	12 mm
R412027405	63 mm	16 mm
R412027406	80 mm	16 mm
R412027407	100 mm	20 mm

Scope of delivery: clevis mounting incl. pivot pins and mounting screws

## Technical information

Material	
Material	Die-cast aluminum
Screws	Steel galvanized

## Dimensions



## Dimensions

Part No.	Piston Ø	CB H14	Ø CD H9	E	FL ±0.2	L min.	MR max.	TG
R412027402	32 mm	26	10	45	22	13	10	32.5
R412027403	40 mm	28	12	52	25	16	13	38
R412027404	50 mm	32	12	65	27	16	12	46.5
R412027405	63 mm	40	16	75	32	21	16	56.5
R412027406	80 mm	50	16	98	36	22	16	72
R412027407	100 mm	60	20	115	41	27	20	89

# Efficient pneumatic solutions, our program: cylinders and drives, valves and valve systems, air supply management



Visit us: [Emerson.com/Aventics](https://www.emerson.com/Aventics)

Your local contact: [Emerson.com/contactus](https://www.emerson.com/contactus)



[Emerson.com](https://www.emerson.com)



[Facebook.com/EmersonAutomationSolutions](https://www.facebook.com/EmersonAutomationSolutions)



[LinkedIn.com/company/Emerson-Automation-Solutions](https://www.linkedin.com/company/Emerson-Automation-Solutions)



[Twitter.com/EMR\\_Automation](https://twitter.com/EMR_Automation)

An example configuration is depicted on the title page. The delivered product may thus vary from that in the illustration. Subject to change. This Document, as well as the data, specifications and other information set forth in it, are the exclusive property of AVENTICS GmbH. It may not be reproduced or given to third parties without its consent. Only use the AVENTICS products shown in industrial applications. Read the product documentation completely and carefully before using the product. Observe the applicable regulations and laws of the respective country. When integrating the product into applications, note the system manufacturer's specifications for safe use of the product. The data specified only serve to describe the product. No statements concerning a certain condition or suitability for a certain application can be derived from our information. The information given does not release the user from the obligation of own judgement and verification. It must be remembered that the products are subject to a natural process of wear and aging.

The Emerson logo is a trademark and service mark of Emerson Electric Co. Brand logotype are registered trademarks of one of the Emerson family of companies. All other marks are the property of their respective owners. © 2020 Emerson Electric Co. All rights reserved.  
2020-12



## CONSIDER IT SOLVED™