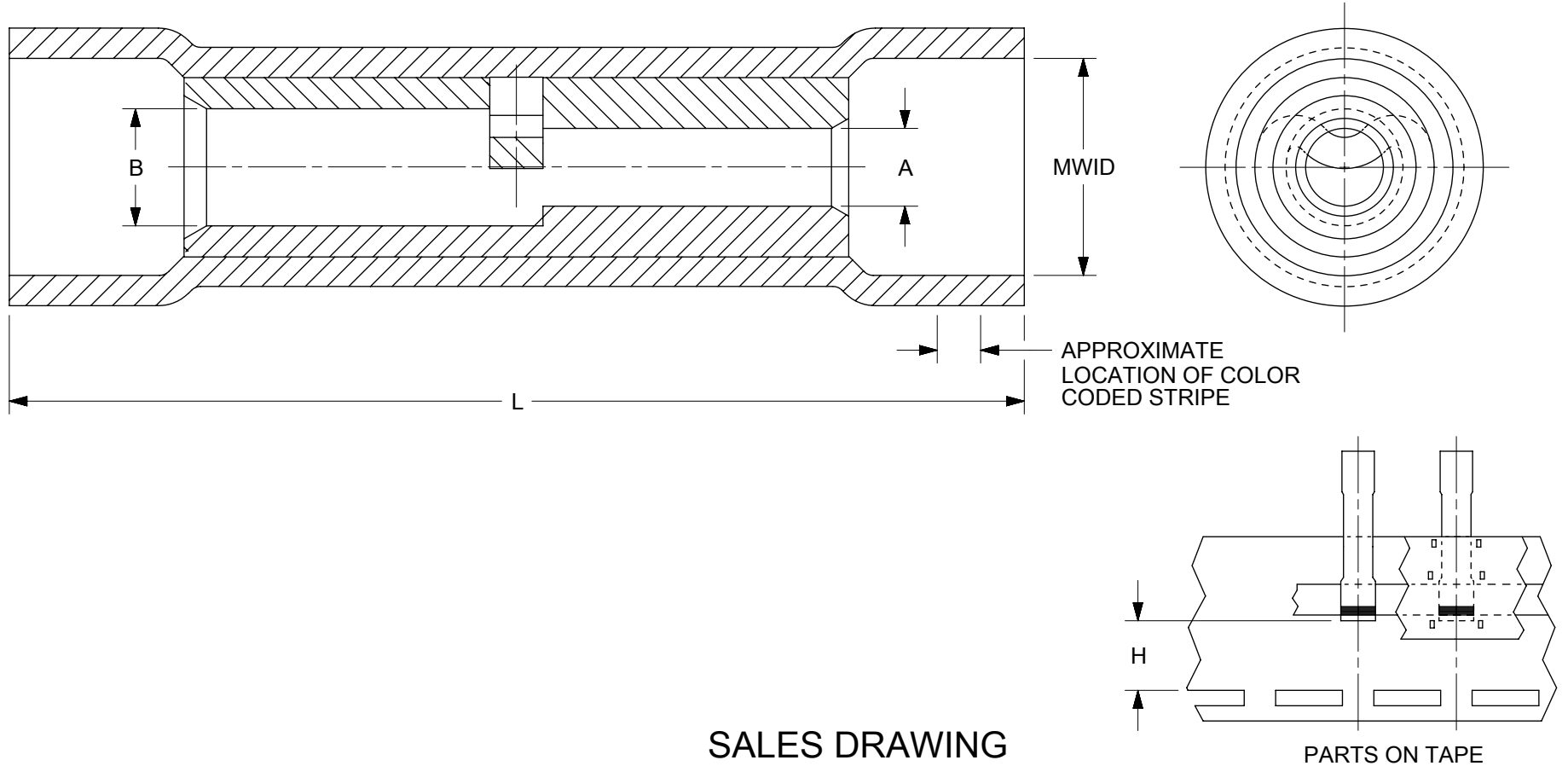


6		5		4		3		2		1		
LOOSE PIECE		TAPE MOUNTED		INSULATION COLOR (REF)	CODE STRIPE COLOR (REF)	"A"		"B"		MWID	"L" ±.025/0.64	"H" ±.03/0.8
MAT'L NO.	ENG'G NO.	MAT'L NO.	ENG'G NO.			AWG	MIN DIA	AWG	MIN DIA			
191540022	BA-631X	191540057	BA-631XT	BLUE	RED	22-18	.065/1.65	16/14	.088/2.24	.17/4.3	1.08/27.4	.42/10.7
191540035	CB-646X <sup>A3</sup>	191540036	CB-646XT	YELLOW	BLUE	16-14	.091/2.31	12-10	.137/3.48	.26/6.6	1.30/33.0	.35/8.9
191540044	DC-654X	191540043	DC-654XT	RED	YELLOW	12-10	.138/3.51	#8	.165/4.19	.33/8.4	1.50/38.1	-
191540047	ED-662X	-	-	BLUE	RED	#8	.175/4.45	#6	.222/5.64	.43/10.9	1.84/46.7	-



**SALES DRAWING**

- NOTES:**
- MATERIALS:**  
 SPLICE: MATTE-TIN PLATED COPPER  
 INSULATION: PVC, COLOR PER CHART
  - MWID = MAXIMUM WIRE INSULATION DIAMETER
  - MUST BE RoHS COMPLIANT

FUNCTIONAL SYMBOLS $\nabla_A = 0$ $\nabla_C = 0$ $\nabla_P = 0$ DIVISIONAL SYMBOLS	THIS DRAWING CONTAINS INFORMATION THAT IS PROPRIETARY TO MOLEX ELECTRONIC TECHNOLOGIES, LLC AND SHOULD NOT BE USED WITHOUT WRITTEN PERMISSION										
	DIMENSION UNITS	SCALE		CURRENT REV DESC: CORRECTED TYPO							
	INCH/MM	1:1		EC NO: 753565							
	GENERAL TOLERANCES (UNLESS SPECIFIED)				DRWN: DEANNM1		2023/06/15		STEP DOWN BUTT SPLICE INSULKRIMP		
	MM	INCH	3 PLACES ±		CHK'D: JMACNEIL		2023/06/15		PRODUCT CUSTOMER DRAWING		
			2 PLACES ±		APPR: JMACNEIL		2023/06/15		DOCUMENT NUMBER		
			1 PLACE ±		INITIAL REVISION:		1991/10/28		SD-19154-007		
			0 PLACES ±		DRWN: RCM		2011/04/27		DOC TYPE		
	ANGULAR TOL ± °				APPR: JMACNEIL				DOC PART		
DRAFT WHERE APPLICABLE MUST REMAIN WITHIN DIMENSIONS				THIRD ANGLE PROJECTION		DRAWING		SERIES		REVISION	
						A-SIZE		19154		A3	
						MATERIAL NUMBER		CUSTOMER		SHEET NUMBER	
								GENERAL MARKET		1 OF 1	

DOCUMENT STATUS	P1	RELEASE DATE	2023/06/15	23:04:53
-----------------	----	--------------	------------	----------