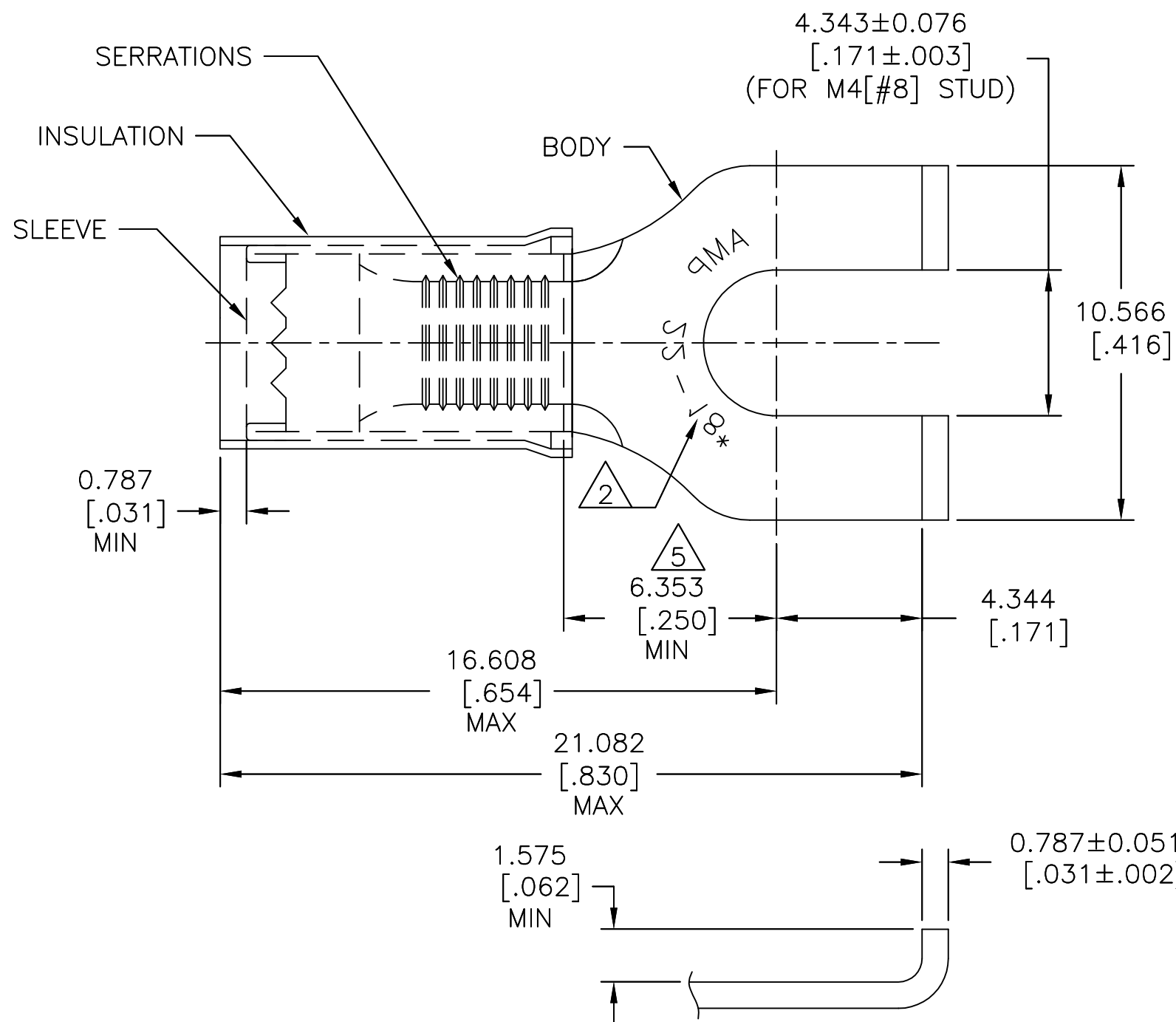


P	LTR	DESCRIPTION	DATE	DWN	APVD
	K1	REDRAWN PER ECO-17-007400	14DEC2017	RS	DR

AMP WIRE RANGE	Listed FILE E13288	LR7189 Certified
22-16 AWG SOLID OR STRANDED	22-16 AWG SOLID OR STRANDED	22-16 AWG SOLID OR STRANDED



- 1 WIRE INSULATION: $\phi 2.667-3.556[\phi .105-.140]$
- 2 STAMP AMP 22-18* APPROX AS SHOWN. 22-16 TERMINALS ARE STAMPED 22-18 IN ACCORDANCE WITH MILITARY SPEC SAE AS 7928 COMMERCIAL RANGE IS 22-16.
- 3 FINISH:
BODY & SLEEVE: TIN PLATE PER ASTM B545.
INSULATION: COLOR-RED.
- 4 MATERIAL:
BODY & SLEEVE: COPPER PER ASTM B152.
INSULATION : NYLON
- 5 APPLIES FROM EDGE OF METAL WIRE BARREL TO CENTER OF STUD HOLE.

5000	ON TAPE, REEL	2-32498-1
1000	LOOSE PIECE	32498
QTY	PACKAGE TYPE	PART NO

**AMP INCORPORATED
CUSTOMER SERVICE SYSTEMS**

FOR ADDITIONAL PRODUCT INFORMATION OR COPIES OF DRAWINGS AND TECHNICAL DOCUMENTS
PRODUCT INFORMATION CENTER
1-800-522-6752

FOR APPLICATION TOOLING ASSISTANCE CENTER
TOOLING INFORMATION
1-800-722-1111

FOR ORDER ENTRY
1-800-526-5142

MAX RECOMMENDED OPERATING TEMPERATURE:
105°C [221°F]

VOLTAGE RATING:
300 V MAX

CIRCULAR MIL AREA:
0.26-1.65mm² [509-3,260]
SOLID OR STRANDED

THIS DRAWING IS A CONTROLLED DOCUMENT.

DIMENSIONS: mm [INCHES]	TOLERANCES UNLESS OTHERWISE SPECIFIED:
	0 PLC ± -
	1 PLC ± -
	2 PLC ± -
	3 PLC ± 0.127[.005]
	4 PLC ± -
	ANGLES ± 5°
MATERIAL	FINISH
4	3

DWN	14DEC2017
RABI S	
CHK	14DEC2017
ROHDE DANIEL F	
APVD	14DEC2017
ROHDE DANIEL F	
PRODUCT SPEC	NAME
UL 486 A-B	
APPLICATION SPEC	SIZE
114-2157	A3
WEIGHT	CAGE CODE
-	00779
CUSTOMER DRAWING	DRAWING NO
	32498
	RESTRICTED TO
	-

STE TE Connectivity

WIRE TERMINAL,
P.I.D.G, FLANGED SPADE,
WIRE SIZE: 22-16 AWG

SCALE	1:1	SHEET	1 OF 1	REV	K1
-------	-----	-------	--------	-----	----

Mouser Electronics

Authorized Distributor

Click to View Pricing, Inventory, Delivery & Lifecycle Information:

[TE Connectivity:](#)

[32498](#)