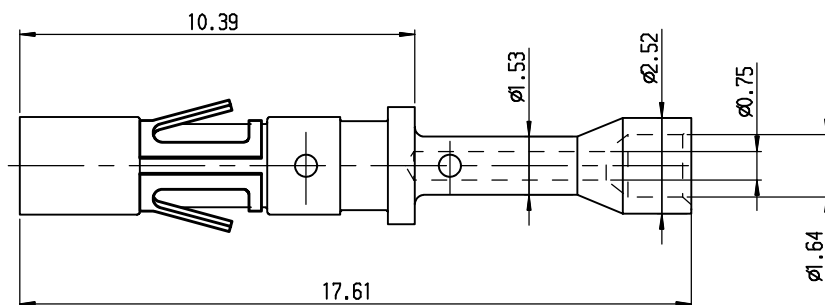


DIT IS ONZE EIGENDOM EN MAG NOCH NAGEMAKT, HERDRUKT, OVERGEMAKT, AAN  
BEREIDEN, NOCH VOOR FABRIKANTE GEBRUIKT WORDEN, ZONDER ONZE SCHRIFTELIJKE  
TOELATING. BIJ NIET GEBRUIK IS DE TERUGZENDING VERPLICHT.

THIS IS OUR EXCLUSIVE PROPERTY. IT IS NOT TO BE COPIED, REPRINTED,  
OR DISCLOSED TO A THIRD PARTY, NOR USED FOR MANUFACTURING WITHOUT  
OUR WRITTEN CONSENT, AND HAS TO BE RETURNED TO US IN CASE OF NO USAGE

REV.	DATE	DESCRIPTION	BY	C'K'D'
00	10/10/05	CREATION	R.Ch	
A	04/01/12	CHANGE CRIMP HAND TOOL	R.Ch	



### PERFORMANCE CHARACTERISTICS

- CURRENT RATING : 13 A MAX.
- CONTACT RESISTANCE :  $\leq 3 \text{ m Ohm}$
- CONTACT RETENTION IN INSERT : 110 N MIN.
- INDIVIDUAL INSERTION FORCE : 3.5 N MAX.
- INDIVIDUAL WITHDRAWAL FORCE : 0.55 N MIN.

### CONTACTS SUITABLE FOR :

- UTO
- UTG
- UTP
- MSM
- SMS QIKMATE

EXTRACTION TOOL : RX2025GE1

CRIMP TOOL : HAND TOOL: SHANDLES / HEAD: S16RCM20

WIRE SIZE : AWG 26-24


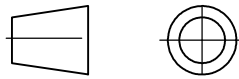

0.12 - 0.25 mm<sup>2</sup>

WIRE STRIP LENGTH = 4.8 MM

### MATERIAL

- CONTACT BODY :  
MATERIAL : BRASS  
\*PLATING : K = GOLD FLASH ALL-OVER, OVER 2  $\mu$  NICKEL MIN. ALL-OVER
- CONTACT INNER SPRING :  
MATERIAL : BERYLLIUM COPPER  
\*PLATING : K = 0.4  $\mu$  MIN. GOLD ALL-OVER, OVER 2  $\mu$  NICKEL MIN. ALL-OVER
- RETAINING SPRING :  
MATERIAL : BERYLLIUM COPPER - UNPLATED

GEN. ST.	01	02	03	04	05	06	07	08	0D	50	60	70	80	90																	
INT. ST.	10	11	12	13	14	18	20	31	32	33	34	38	39	40	42	43	44	45	46	48	56	70	72	73	75	76	81	82	83	84	88

1DEC $\pm 0,2$ 1DEC 2DEC $\pm 0,1$ 2DEC ANGLES $\pm 1'$ HOEKEN	<b>APPR.</b>	<b>DATE</b>	<b>SIGN.</b>	SHORT FEMALE CRIMP CONTACT-AWG24
	DRAFT	10-10-05	ROUILLARD Ch	<b>CAT.N°.</b> RC24M9GE7K
WE RESERVE THE RIGHT TO CHANGE DIMENSIONS OR REQUIREMENTS WITHOUT PRIOR NOTICE.	PROD. MGR.			 <b>SOURIAU</b> Route Nationale 23 72470 CHAMPAGNE
	PR.ENG.MGR.			
ALL DIMENSIONS IN MM	PR.MGT.MGR.			
	<b>REFERENCES</b>			<b>BS-A-20</b>  <b>NOT EXPORT CONTROLLED</b>
ALLE AFMETINGEN IN MM				DRAWING NR. CUSTOMER DRAWING