



Part Number : [22272041](#)

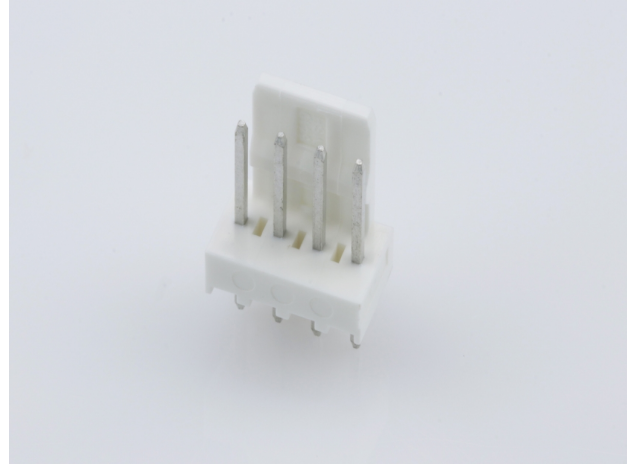
Product Description : KK 254 Wire-to-Board Header, Vertical, with Friction Lock, 4 Circuits, Tin (Sn) Plating

Series Number : 6410

Status : Active

Product Category : PCB Headers and Receptacles

Engineering Number : AE-6410-04A(222)



Documents & Resources

Drawings

[Drawing 022272041_sd.pdf](#)

[Packaging Design Drawing PK-6410-002-001.pdf](#)

3D Models and Design Files

[3D Model 022272041_stp.zip](#)


[Symbol Footprint Data SYM-22-27-2041-001.zip](#)

Specifications

[Product Specification PS-99020-0088-001.pdf](#)

Product Environment Compliance

Compliance

GADSL/IMDS	Compliant with Exemption 44; 33
China RoHS	
EU ELV	Not Relevant
Low-Halogen Status	Low-Halogen per IEC 61249-2-21
REACH SVHC	Not Contained per D(2023)3788-DC (14 Jun 2023)
EU RoHS	Compliant per EU 2015/863

Multiple Part Product Compliance Statements

- Eu RoHS

- REACH SVHC

- Low-Halogen

Multiple Part Industry Compliance Documents

- IPC 1752A Class C
- IPC 1752A Class D
- Molex Product Compliance Declaration
- IEC-62474
- chemSHERPA (xml)

EU RoHS Certificate of Compliance

Part Details

General

Status	Active
Category	PCB Headers and Receptacles
Series	6410
Description	KK 254 Wire-to-Board Header, Vertical, with Friction Lock, 4 Circuits, Tin (Sn) Plating
Application	Signal, Wire-to-Board
Component Type	PCB Header
Product Family	KK Interconnect Systems
Product Name	KK 254
UPC	800753644601

Agency

CSA	LR19980
UL	E29179

Electrical

Current - Maximum per Contact	4.0A
Voltage - Maximum	500V

Physical

Breakaway	No
Circuits (Loaded)	4
Circuits (maximum)	4
Color - Resin	Natural (White)

First Mate / Last Break	No
Flammability	94V-0
Glow-Wire Capable	No
Guide to Mating Part	No
Keying to Mating Part	None
Lock to Mating Part	Yes
Material - Metal	Brass
Material - Plating Mating	Tin
Material - Plating Termination	Tin
Material - Resin	Nylon
Net Weight	0.460/g
Number of Rows	1
Orientation	Vertical
Packaging Type	Bag
PC Tail Length	3.56mm
PCB Locator	No
PCB Retention	None
PCB Thickness - Recommended	1.60mm
Pitch - Mating Interface	2.54mm
Pitch - Termination Interface	2.54mm
Plating min - Mating	5.080µm
Plating min - Termination	5.080µm
Polarized to Mating Part	Yes
Polarized to PCB	No
Shrouded	Partial
Stackable	No
Temperature Range - Operating	See Product Specification
Termination Interface Style	Through Hole

Solder Process Data

Max-Duration	5
Lead-Free Process Capability	WAVE
Max-Cycle	1
Max-Temp	235

Mates With / Use With

Mates with Part(s)

Description	Part Number
KK 254 Single Row Crimp Housings	<u>2695</u>

This document was generated on Mar 04, 2024