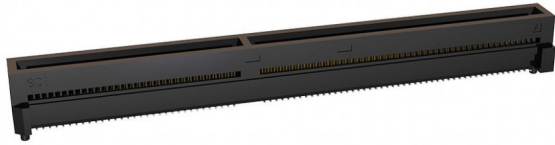
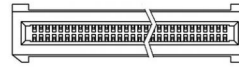


# Product Data Sheet

EC.8 straight 160p,  
Part No. 408-52160-100-12



160 Pins



mit Kodierung / with key

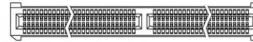


Illustration similar



Perpendicular



SMT



Direct Connector



High Density



High Speed

- 160 pins
- with key
- for 1.60 mm edge card thickness
- 0.8 mm pitch
- data transfer rate 28 Gbps
- Tray packaging



» to product on [www.ept.de](http://www.ept.de)



» to product group EC.8 - 0.8 mm Edge Card

# Product Data Sheet

EC.8 straight 160p,  
Part No. 408-52160-100-12



## Technical Specifications

### Basics

No. of Contacts	160
Termination Technology	SMT
Operating Temperature Range	-40°C to +125°C

### Material

Insulator Material	LCP, UL 94 V-0
CTI value <i>IEC 60112</i>	200
Contact Material	Copper alloy
Plating	Au over PdNi over Ni
Termination area	Sn over Ni

### Mechanical

Pitch	0.8 mm
Mating Force per Pin	$\leq 0.635$ N
Separating Force per Pin	$\geq 0.06$ N
Durability <i>IEC 60512-9-1</i>	500 mating cycles
Coplanarity	$\leq 0.1$ mm
Vibration, sinusoidal <i>IEC 60512-6-4</i>	10 - 2000 Hz, 20g
Contact mating problems if vibrations occur, sinusoidal <i>IEC 60512-2-5</i>	$\leq 1$ $\mu$ s
Shock, semi-sinusoidal <i>IEC 60512-6-3</i>	50g, 11 ms
Contact mating problems if shock occur, semi-sinusoidal <i>IEC 60512-2-5</i>	$\leq 1$ $\mu$ s

### Electrical

Operational Current <i>IEC 60512-5-2</i>	1.35 A at 20°C (140 of 140 pins) 3.20 A at 20°C (8 of 140 pins)
Contact Resistance <i>IEC 60512-2-1</i>	$\leq 15$ m $\Omega$
Clearance and Creepage	0.25 mm
Insulation Resistance <i>IEC 60512-3-1</i>	$\geq 1$ G $\Omega$
Test Voltage <i>IEC 60512-4-1</i>	1100 VDC
Data Transfer Rate	28 Gbps

# Product Data Sheet

EC.8 straight 160p,  
Part No. 408-52160-100-12



---

## Technical Specifications

### Processing

---

Soldering Temperature 20 - 40 s at 260°C  
*JEDEC J-STD-020E*

MSL 1  
*JEDEC J-STD-020E*

Assembly Pick and Place

### Approval / Compliance

---

UL file E130314

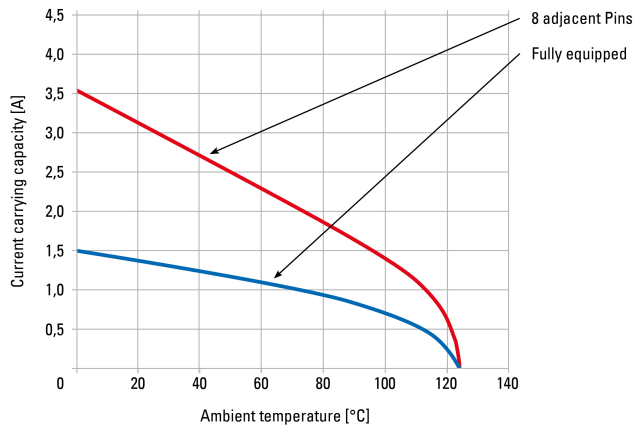
Environment RoHS compliant

# Product Data Sheet

EC.8 straight 160p,  
Part No. 408-52160-100-12



## Derating Diagram



# Product Data Sheet

EC.8 straight 160p,  
Part No. 408-52160-100-12

---



## Modifications

Available on request

- Tape & Reel Packaging

## Drawings

Component data in 2D and 3D format you can download here:

[» PDF](#)

[» 3D IGES](#)

[» 3D STEP](#)

[» 3D PDF](#)