

Product Data Sheet

Colibri Plug 40, 8mm,
Part No. 401-55701-51

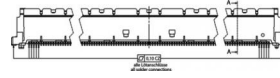
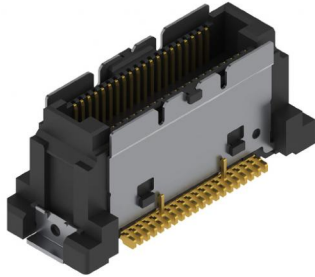


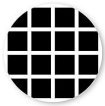
Illustration similar



Parallel



SMT



High Density



High Speed

- for 8 mm board-to-board distance
- 40 contacts
- termination technology SMT
- pitch 0.5 mm
- data transfer rate 10+ Gbit/s



» to product on www.ept.de



» to product group Colibri - 0.5 mm SMT

Product Data Sheet

Colibri Plug 40, 8mm,
Part No. 401-55701-51



Technical Specifications

Basics

No. of Contacts	40
Termination Technology	SMT
Board-to-Board Distance	8 mm
Operating Temperature Range	-40°C to +125°C

Material

Insulator Material	LCP, UL 94 V-0
CTI value <i>IEC 60112</i>	125
Contact Material	Copper alloy
Plating	Au over Ni

Mechanical

Pitch	0.5 mm
Mating Force per Pin	max. 0.9 N
Separating Force per Pin	min. 0.1 N
Durability	30 mating cycles
Coplanarity	max. 0.1 mm

Electrical

Operational Current	max. 0.5 A
Operational Voltage	50 VAC
Contact Resistance	max. 75 mΩ
Clearance and Creepage	≥ 0.15 mm
Insulation Resistance	> 100 MΩ
Test Voltage	200 VAC
Data Transfer Rate	10 Gbit/s

Processing

Soldering Temperature	260°C per J-STD-020
MSL	1
Assembly	Pick and Place

Approval / Compliance

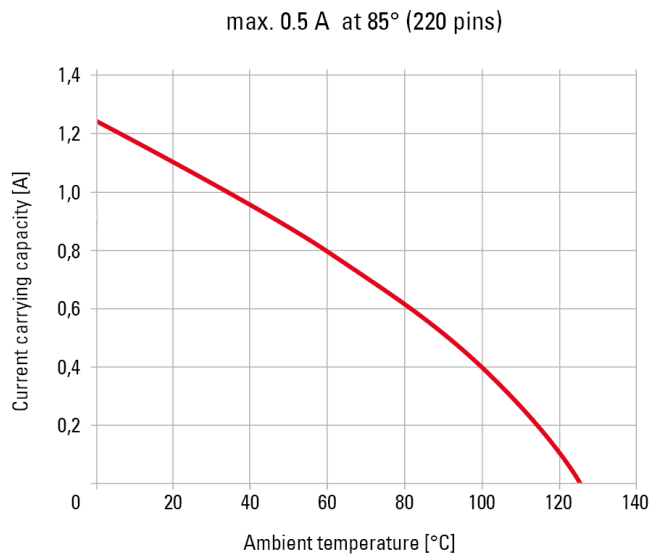
UL file	E130314
Environment	RoHS compliant

Product Data Sheet

Colibri Plug 40, 8mm,
Part No. 401-55701-51



Derating Diagram



Product Data Sheet

Colibri Plug 40, 8mm,
Part No. 401-55701-51



Modifications

Available on request

- different number of contacts
- other stacking heights
- alternative contact surfaces

Drawings

Component data in 2D and 3D format you can download here:

[» PDF](#)

[» 3D IGES](#)

[» 3D STEP](#)

[» 3D PDF](#)