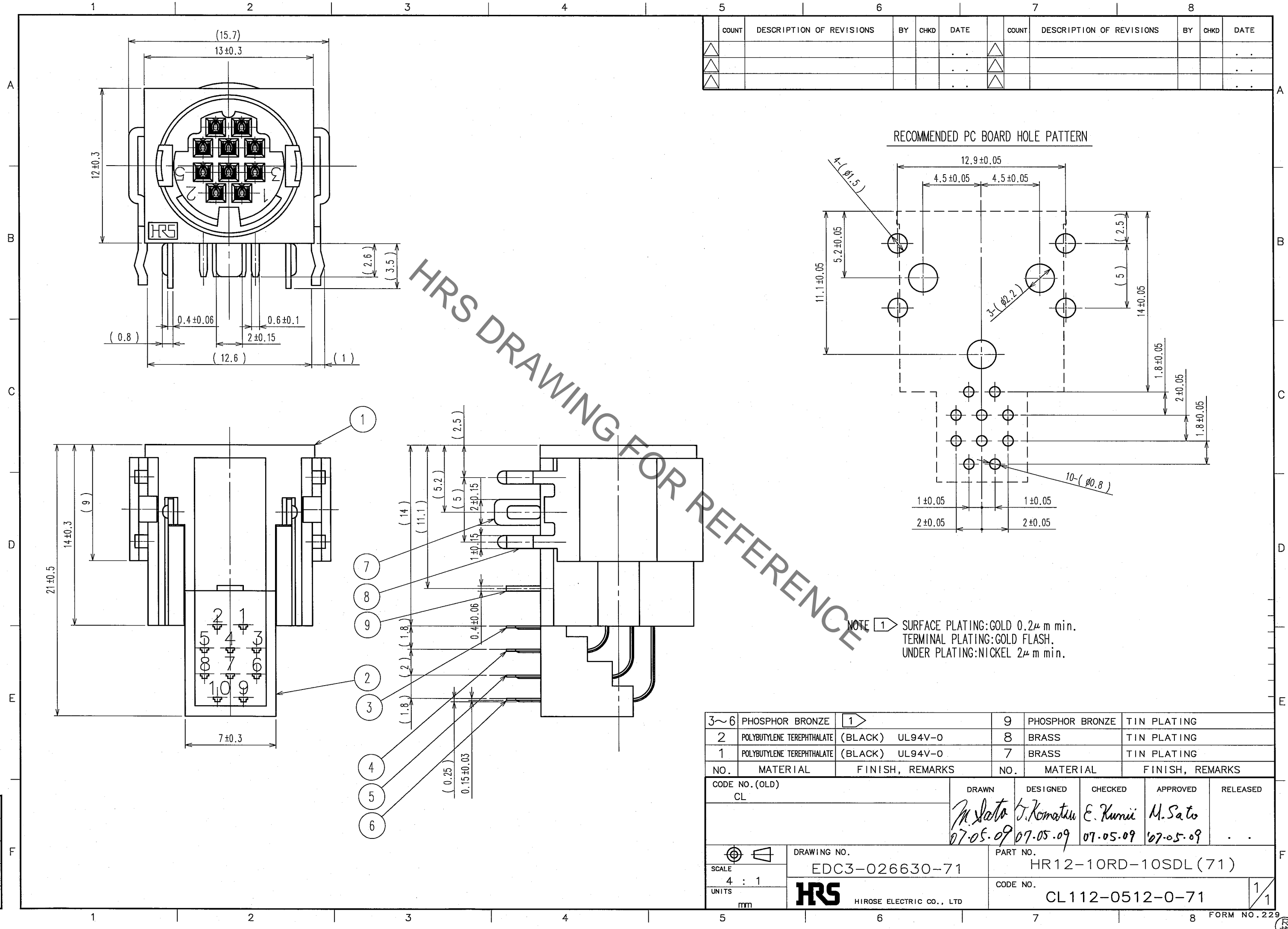


Jan.1.2022 Copyright 2022 HIROSE ELECTRIC CO., LTD. All Rights Reserved.
In case of consideration for using Automotive equipment / device which demand high reliability, kindly contact our sales window correspondents.



HRS DRAWING FOR REFERENCE

NOTE 1 → SURFACE PLATING: GOLD 0.2μ m min.
TERMINAL PLATING: GOLD FLASH.
UNDER PLATING: NICKEL 2μ m min.

COUNT	DESCRIPTION OF REVISIONS	BY	CHKD	DATE	COUNT	DESCRIPTION OF REVISIONS	BY	CHKD	DATE
△					△				
△					△				
△					△				

3~6	PHOSPHOR BRONZE	1	9	PHOSPHOR BRONZE	TIN PLATING
2	POLYBUTYLENE TEREPHTHALATE (BLACK)	UL94V-0	8	BRASS	TIN PLATING
1	POLYBUTYLENE TEREPHTHALATE (BLACK)	UL94V-0	7	BRASS	TIN PLATING
NO.	MATERIAL	FINISH, REMARKS	NO.	MATERIAL	FINISH, REMARKS
CODE NO. (OLD) CL			DRAWN	DESIGNED	CHECKED
			M. Sato	T. Komatsu	E. Kumii
			07-05-09	07-05-09	07-05-09
			APPROVED	RELEASED	
			M. Sato		
			07-05-09		
DRAWING NO. EDC3-026630-71			PART NO. HR12-10RD-10SDL (71)		
SCALE 4 : 1			CODE NO. CL112-0512-0-71		
UNITS mm			HRS HIROSE ELECTRIC CO., LTD		
					1/1

Mouser Electronics

Authorized Distributor

Click to View Pricing, Inventory, Delivery & Lifecycle Information:

[Hirose Electric:](#)

[HR12-10RD-10SDL\(71\)](#)