



SERIES 1550 - SINGLE AND DOUBLE-POLE ROCKER SWITCHES

TO 16 (4) A 250 V AC



PRODUCT FEATURES

- Inrush currents (capacitive) up to 100 A
- Two housing variants (with flange or lower lying)
- With mechanical forced opening
- Illuminated window with lens effect

ON REQUEST



- Other colors
- Other rocker labelings
- Other lamp variants
- Conformity IEC 60065 chap. 14.6
- Special rockers
- Cable assembly

| | |
|--|--|
| Mechanical life endurance | 5E4 |
| Inrush current (capacitive) | 100 A |
| Contact distance | ≥ 3 mm |
| Contact resistance (new condition) | < 100 mOhm (1 A 12 V DC) |
| Insulation resistance (new condition) | > 100 MOhm (500 V DC) |
| Proof tracking | 250 PTI |
| Protection type | IP 40 |
| Ambient temperature | terminal side -20 °C ... +100 °C actuating side -20 °C ... +55 °C |
| Flammability | UL 94 V-2 UL 94 V-0 (product-dependent) |
| Glow wire test temperature | 850 °C |
| Material actuator housing | PA PA |
| Plug force of the terminals | ≤ 80 N |
| Approval marks | |
| Suitable for appliances of protection class II | |



SERIES 1550 - SINGLE AND DOUBLE-POLE ROCKER SWITCHES

TO 16 (4) A 250 V AC



|  single-pole  | | Lighting voltage (V) | Actuator color / printing | Housing color | 7 A 250 V AC 5E4 | 16 (4) A 250 V AC 5E4 | 16 (4) A 250 V AC 1E4 | 10 (4) A 250 V AC 5E4 | 10 (4) A 250 V AC 25E3 | 10 A 12 V DC | 20 mA 250 V AC 5E4 | 20 A 250 V AC 2 HP | 20 A 125 V AC 1 HP | 16 A 250 V AC 2 HP | 16 A 125 V AC 1 HP | Terminal type | Terminal description | Contact material | EN 60335 cap. 30 conform "G" | Miscellaneous | Stock version |
|---|-----|----------------------|---------------------------|---------------|------------------|-----------------------|-----------------------|-----------------------|------------------------|--------------|--------------------|--------------------|--------------------|--------------------|--------------------|---------------|----------------------|------------------|------------------------------|---|---------------|
| ON / OFF switch (SPST) | | | | | | | | | | | | | | | | | | | | | |
| 1550.3102 | 230 | | | | | ○ | ○ | | | | | | | ○ | | | 6.3 | Ag | | | |
| 1550.3609 | 12 | | | | | | | | ○ | | | | | | | | 6.3 | Ag | | lower lying flange | |
| 1551.3102 | | | | | | ○ | ○ | | | | | | | ○ | ○ | | 6.3 | Ag | ○ | | ○ |
| 1551.3103 | | | | | | ○ | ○ | | | | | | | ○ | ○ | | 6.3 | Ag | | | |
| 1551.3106 | | | | | | ○ | ○ | | | | | | | ○ | ○ | | 6.3 | Ag | | | |
| 1551.2654 | | | | | | | | | | ○ | | | | | | | | Au | | approvals KEMA lower lying flange | |
| Normally closed contact (SPNC) | | | | | | | | | | | | | | | | | | | | | |
| 1581.1303 | | | | | ○ | | | | | | | | | ○ | ○ | | 6.3 | Ag | ○ | increased life endurance at a high electrical rating | |
| 1551.1303 | | | | | | ○ | ○ | | | | | | | ○ | ○ | | 6.3 | Ag | | | |
| Normally open contact (SPNO) | | | | | | | | | | | | | | | | | | | | | |
| 1551.3202 | | | | | | ○ | ○ | | | | | | | ○ | ○ | | 6.3 | Ag | | | ○ |
| 1551.3702 | | | | | | ○ | ○ | | | | | | | ○ | ○ | | 6.3 | Ag | | lower lying flange | |

ROCKERSWITCHES
 PUSHBUTTON SWITCHES
 TOGGLE SWITCHES
 SLIDE SWITCHES
 ROTARY SWITCHES
 FOOT SWITCHES
 TACT AND KEY SWITCHES
 SMP-ACTION SWITCHES
 MICRO-SIGNAL SWITCHES
 SENSORS
 ECO
 PUSH IN DRIVE



SERIES 1550 - SINGLE AND DOUBLE-POLE ROCKER SWITCHES

TO 16 (4) A 250 V AC

|  double-pole  | Lighting voltage (V) | Actuator color / printing | Housing color | | | | | | | | | | | Terminal type | Terminal description | Contact material | Miscellaneous | Stock version | | |
|---|----------------------|---------------------------|---------------|------------------|-----------------------|-----------------------|-----------------------|------------------------|--------------|--------------------|--------------------|--------------------|--------------------|--------------------|----------------------|------------------|---------------|---------------|---------------------------------------|---|
| | | | | 7 A 250 V AC 5E4 | 16 (4) A 250 V AC 5E4 | 16 (4) A 250 V AC 1E4 | 10 (4) A 250 V AC 5E4 | 10 (4) A 250 V AC 25E3 | 10 A 12 V DC | 20 mA 250 V AC 5E4 | 20 A 250 V AC 2 HP | 20 A 125 V AC 1 HP | 16 A 250 V AC 2 HP | 16 A 125 V AC 1 HP | | | | | EN 60335 cap. 30 conform "G" | |
| ON / OFF switch (DPST) | | | | | | | | | | | | | | | | | | | | |
| 1555.3102 | 230 | | | | | ○ | ○ | | | | ○ | ○ | ○ | | | 6.3 | Ag | ○ | | ○ |
| 1555.3104 | 230 | | | | | ○ | ○ | | | | | | ○ | | | 6.3 | Ag | | | ○ |
| 1555.3108 | 230 | | | | | ○ | ○ | | | | | | ○ | | | 6.3 | Ag | | | ○ |
| 1555.3604 | 230 | | | | | ○ | ○ | | | | | | ○ | | | 6.3 | Ag | | lower lying flange | |
| 1555.4608 | 230 | | | | | ○ | ○ | | | | | | ○ | | | | Ag | | lower lying flange | |
| 1555.8104 | 230 | | | | | ○ | ○ | | | | | | ○ | | | 6.3 | Ag | | flange dimension 31.5 x 17 mm | |
| 1555.3125 | 115 | | | | | ○ | ○ | | | | ○ | ○ | ○ | | | 6.3 | Ag | ○ | | |
| 1555.3109 | 110 | | | | | | | | | | | | ○ | | | 6.3 | Ag | | | |
| 1555.3120 | 110 | | | | | | | | | | | | ○ | | | 6.3 | Ag | | | |
| 1555.3111 | 12 | | | | | | | | ○ | | | | | | | 6.3 | Ag | | | |
| 1552.0102 | | | | | | ○ | ○ | | | | | | ○ | ○ | | | Ag | | | ○ |
| 1552.2601 | | | | | | ○ | ○ | | | | | | ○ | ○ | | | Ag | | lower lying flange | |
| 1552.2602 | | | | | | ○ | ○ | | | | | | ○ | ○ | | | Ag | ○ | lower lying flange | ○ |
| 1552.3102 | | | | | | ○ | ○ | | | | | | ○ | ○ | | 6.3 | Ag | | | ○ |
| 1552.3104 | | | | | | ○ | ○ | | | | | | ○ | ○ | | 6.3 | Ag | | | |
| 1552.3112 | | | | | | ○ | ○ | | | | | | ○ | ○ | | 6.3 | Ag | ○ | conformant with EN 60065 par. 14.6 | ○ |
| 1552.3117 | | | | | | ○ | ○ | | | | ○ | ○ | ○ | ○ | | 6.3 | Ag | ○ | | |
| 1552.3602 | | | | | | ○ | ○ | | | | | | ○ | ○ | | 6.3 | Ag | | lower lying flange | ○ |
| 1552.4602 | | | | | | ○ | ○ | | | | | | ○ | ○ | | | Ag | | lower lying flange | ○ |
| 1552.4702 | | | | | | ○ | ○ | | | | | | ○ | ○ | | | Ag | | 2 PCB holders lower lying flange | |
| 1552.4802 | | | | | | ○ | ○ | | | | | | ○ | ○ | | | Ag | | lower lying flange | |

ROCKER SWITCHES

PUSHBUTTON SWITCHES

TOGGLE SWITCHES

SLIDE SWITCHES

ROTARY SWITCHES

FOOT SWITCHES

TACT AND KEY SWITCHES

SNAP-ACTION SWITCHES

MICRO-SIGNAL SWITCHES

SENSORS

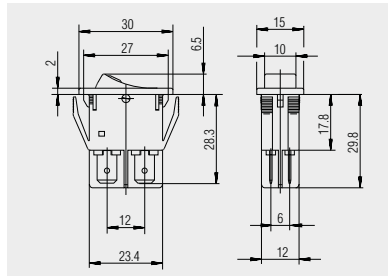
ECO

PUSH/DRIVE



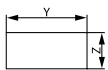
SERIES 1550 - SINGLE AND DOUBLE-POLE ROCKER SWITCHES

TO 16 (4) A 250 V AC



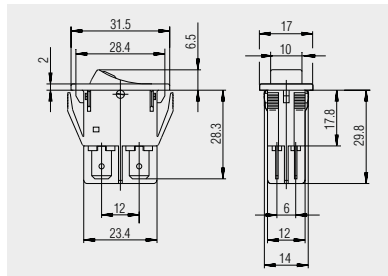
Basic types 1550 and 1555
single and double-pole

Quick-connect terminal 6.3 x 0.8



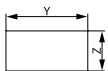
X = Wall thickness

| x | y | z |
|-------------|----------------------|----------------------|
| 0.8 ... 5.0 | 27.2 ^{+0.1} | 12.2 ^{+0.2} |



1555.8104
double-pole

Quick-connect terminal 6.3 x 0.8
cover frame 31.5 x 17 mm



X = Wall thickness

| x | y | z |
|-------------|----------------------|--------------------|
| 0.8 ... 5.0 | 28.6 ^{+0.1} | 14 ^{+0.2} |

ROCKER SWITCHES
PUSHBUTTON SWITCHES
TOGGLE SWITCHES
SLIDE SWITCHES
ROTARY SWITCHES
FOOT SWITCHES
TACT AND KEY SWITCHES
SNAP-ACTION SWITCHES
MICRO-SIGNAL SWITCHES
SENSORS
ECO
PUSH IN DRIVE

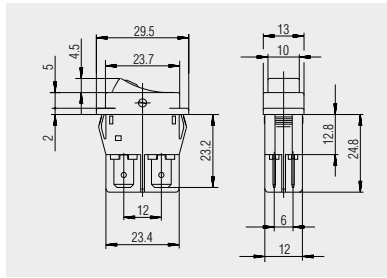


SERIES 1550 - SINGLE AND DOUBLE-POLE ROCKER SWITCHES

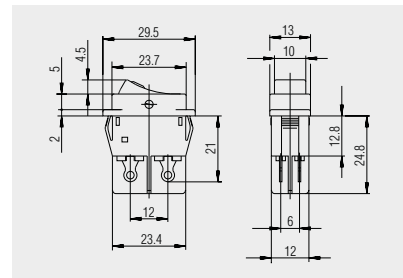
TO 16 (4) A 250 V AC



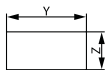
Basic types 1550 and 1555
lower lying flange
single and double-pole



Quick-connect terminal 6.3 x 0.8



Solder terminal

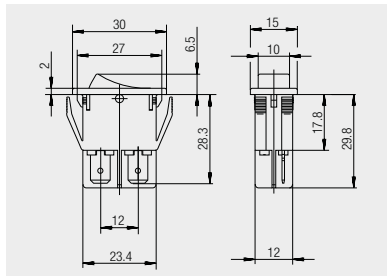


X = Wall thickness

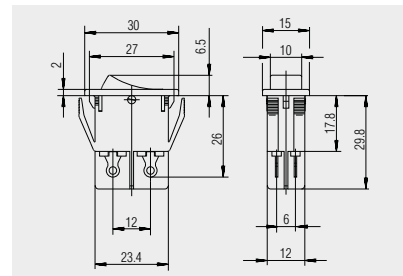
| x | y | z |
|---------------|----------------------|----------------------|
| 0.75 ... 1.25 | 26.2 ^{-0.1} | 12.4 ^{+0.1} |
| 2 ... 3 | 26.8 ^{-0.1} | 12.4 ^{+0.1} |
| 2 ... 3 | 26.8 ^{-0.1} | 12.4 ^{+0.1} |
| 1.25 ... 2 | 26.4 ^{-0.1} | 12.4 ^{+0.1} |



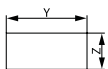
Basic type 1551 and 1552
single and double-pole



Quick-connect terminal 6.3 x 0.8



Solder terminal



X = Wall thickness

| x | y | z |
|-------------|----------------------|----------------------|
| 0.8 ... 5.0 | 27.2 ^{+0.1} | 12.2 ^{+0.2} |

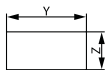


SERIES 1550 - SINGLE AND DOUBLE-POLE ROCKER SWITCHES

TO 16 (4) A 250 V AC

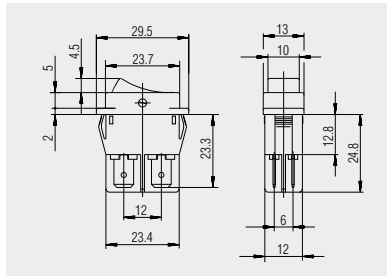


Basic types 1551 and 1552
lower lying flange
single and double-pole

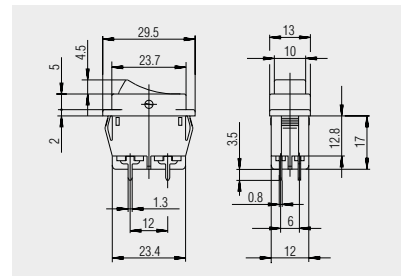


X = Wall thickness

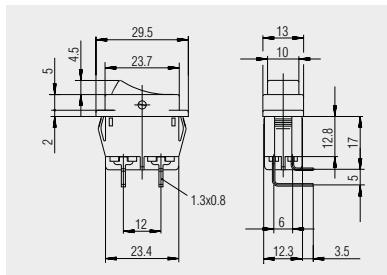
| x | y | z |
|---------------|----------------------|----------------------|
| 0.75 ... 1.25 | 26.2 ^{-0.1} | 12.4 ^{+0.1} |
| 1.25 ... 2 | 26.4 ^{-0.1} | 12.4 ^{+0.1} |
| 2 ... 3 | 26.8 ^{-0.1} | 12.4 ^{+0.1} |



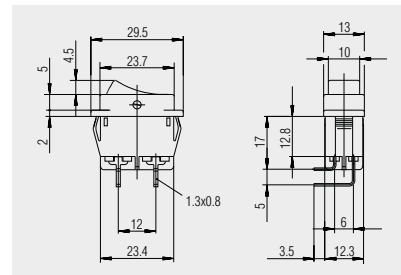
Quick-connect terminal 6.3 x 0.8



PCB terminal



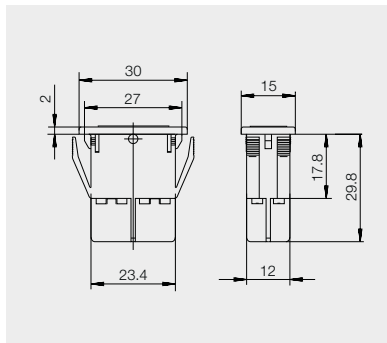
PCB terminal angled



PCB terminal angled mirror-inverted



Dummy piece
203.103.013



Dummy piece for series 1550 made of PA