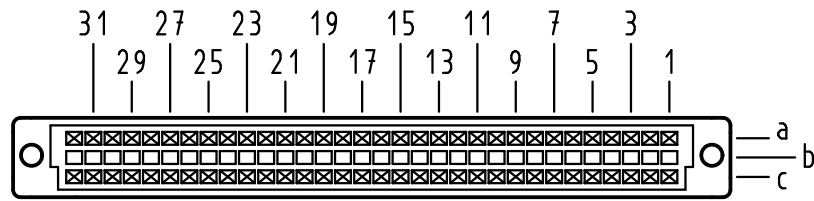


Alle Rechte vorbehalten/ All rights reserved

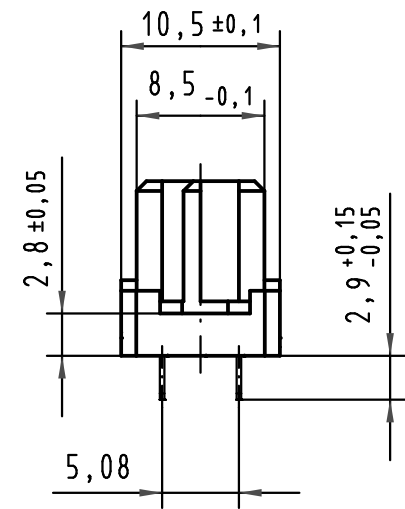
X
Kontaktanordnung
contact arrangement



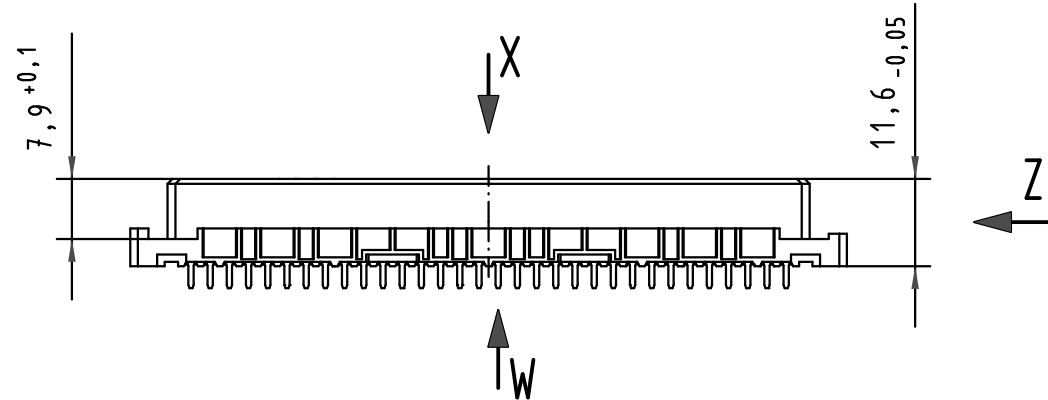
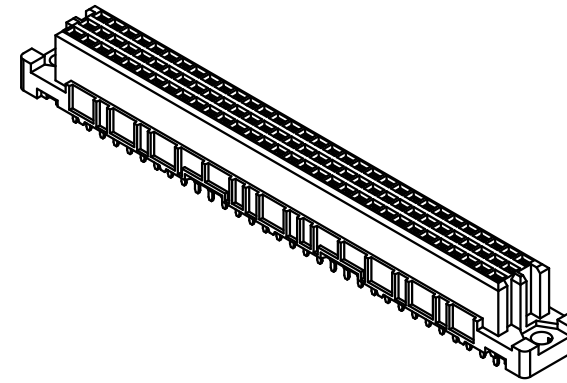
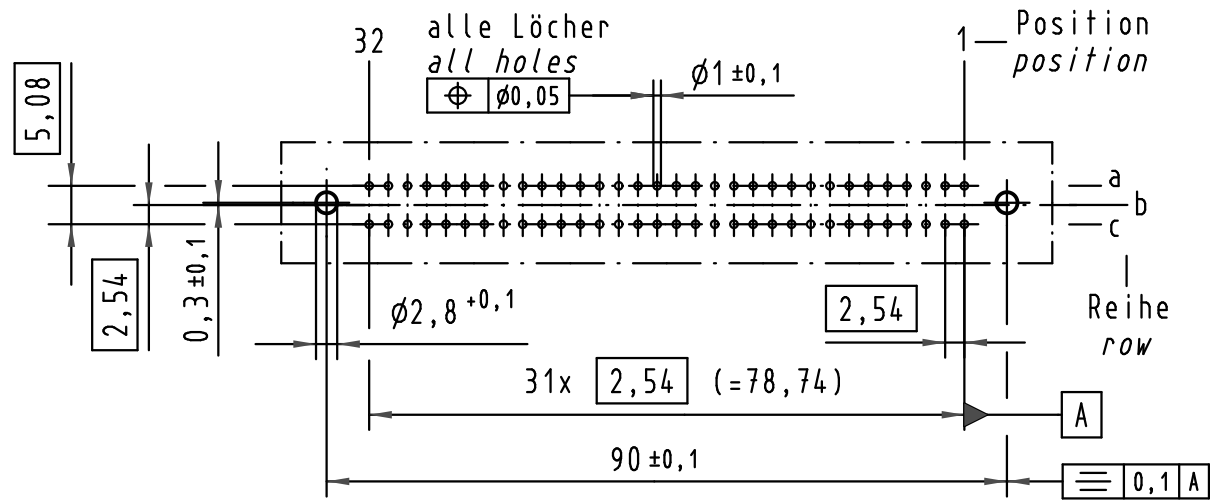
64 Einlöt-Kontakte
64 solder-contacts

- ☒ = Einlöt-Kontakt
= solder-contact
- = kinked Einlöt-Kontakt
= kinked solder-contact
- = Kontaktposition nicht belegt
= position without contact

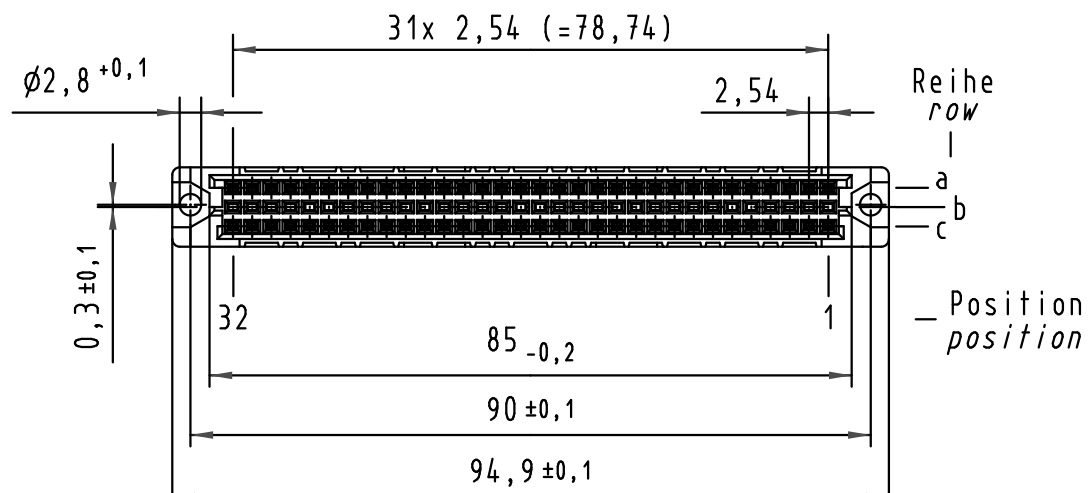
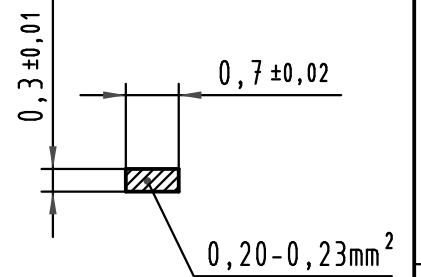
Z
2:1



X
(Lochbild)
(board drillings)



W
10:1
Querschnitt der
Lötanschlüsse:
cross-section of
solder terminations:



09 03 264 <u>7</u> 824	3	Au über/over Ni
09 03 264 <u>6</u> 824	2	Au über/over Ni
09 03 264 <u>2</u> 824	1	Au über/over Ni
Bestell-Nr. part-no.	Anforderungsstufe nach IEC performance level acc.to IEC	Kontaktoberfläche contact plating

All Dimensions in mm Original Size DIN A 3			Techn. Character.			Nicht tolerierte Maßel/Free size tolerances IEC 60603-2		
						har-bus C Federleiste Einlöt 2,9 , 64 pol. har-bus C female connector solder 2,9 , 64 pol.		
			Detail.	03.09.99	Rie.	Maßstab/Scale 1:1 2:1 10:1	TB 09 03 264 x824 Blatt/page	
34650	13.08.07	Cla	Insp.	03.09.99	Pa.			
34158	18.01.07	LehT	Stand.					
30815	19.02.02	Rie.	HARTING Electronics GmbH & Co. KG				Sub.	
26083			D-32339 ESPELKAMP					
Mod.	Dat.	Name						