

REV	DESCRIPTION	DATE	DMN	APVD
B5	REVISED	ECR-17-015885	27OCT2017	TS HY
B6	OBSOLETE -3,-6	ECR-19-016520	13FEB2020	DM HK
B7	ADD 1-1318745-2	ECR-19-018614	09MAR2020	DM HK
B8	REVISED	ECR-21-112849	08SEP2021	TH RK

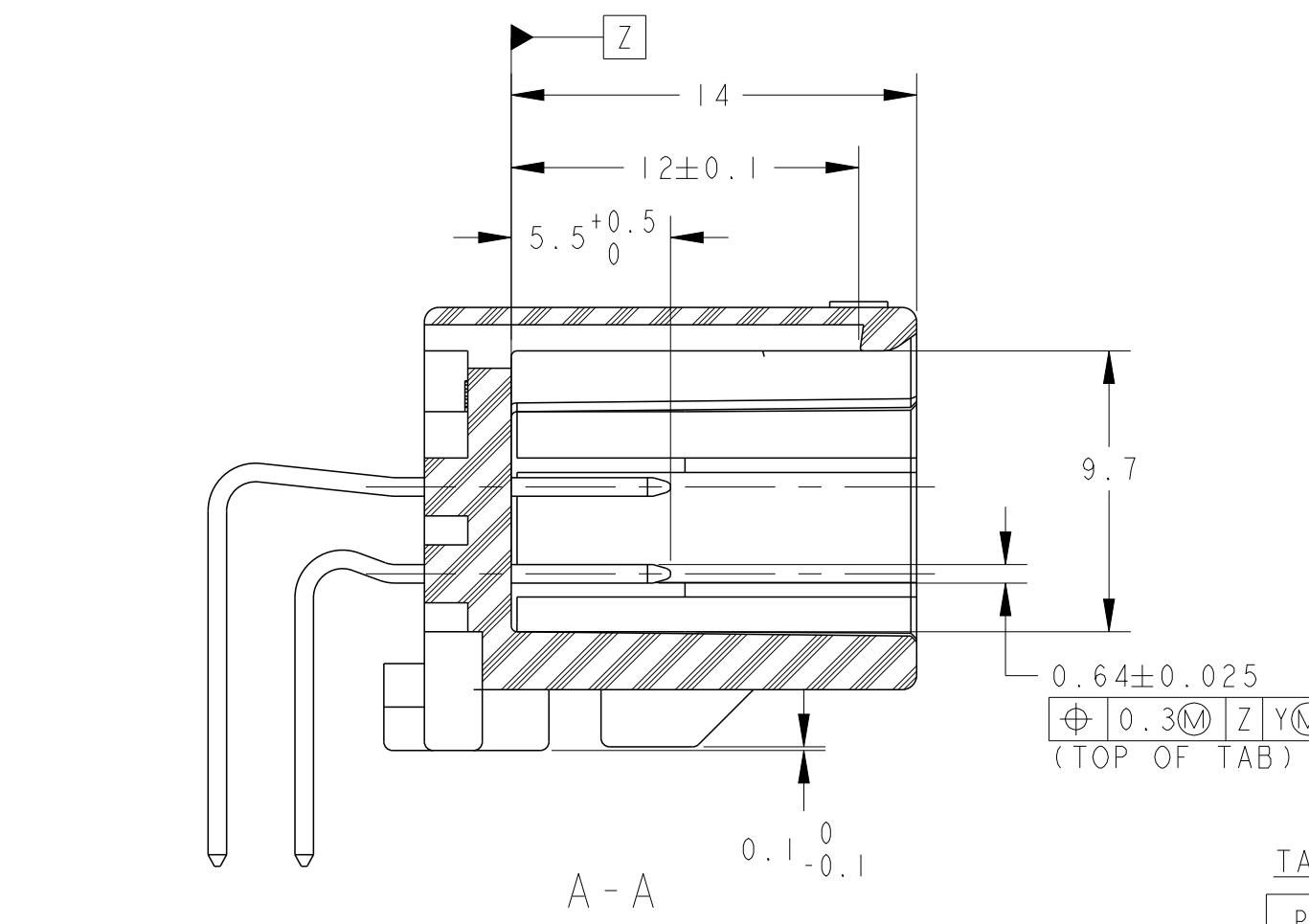
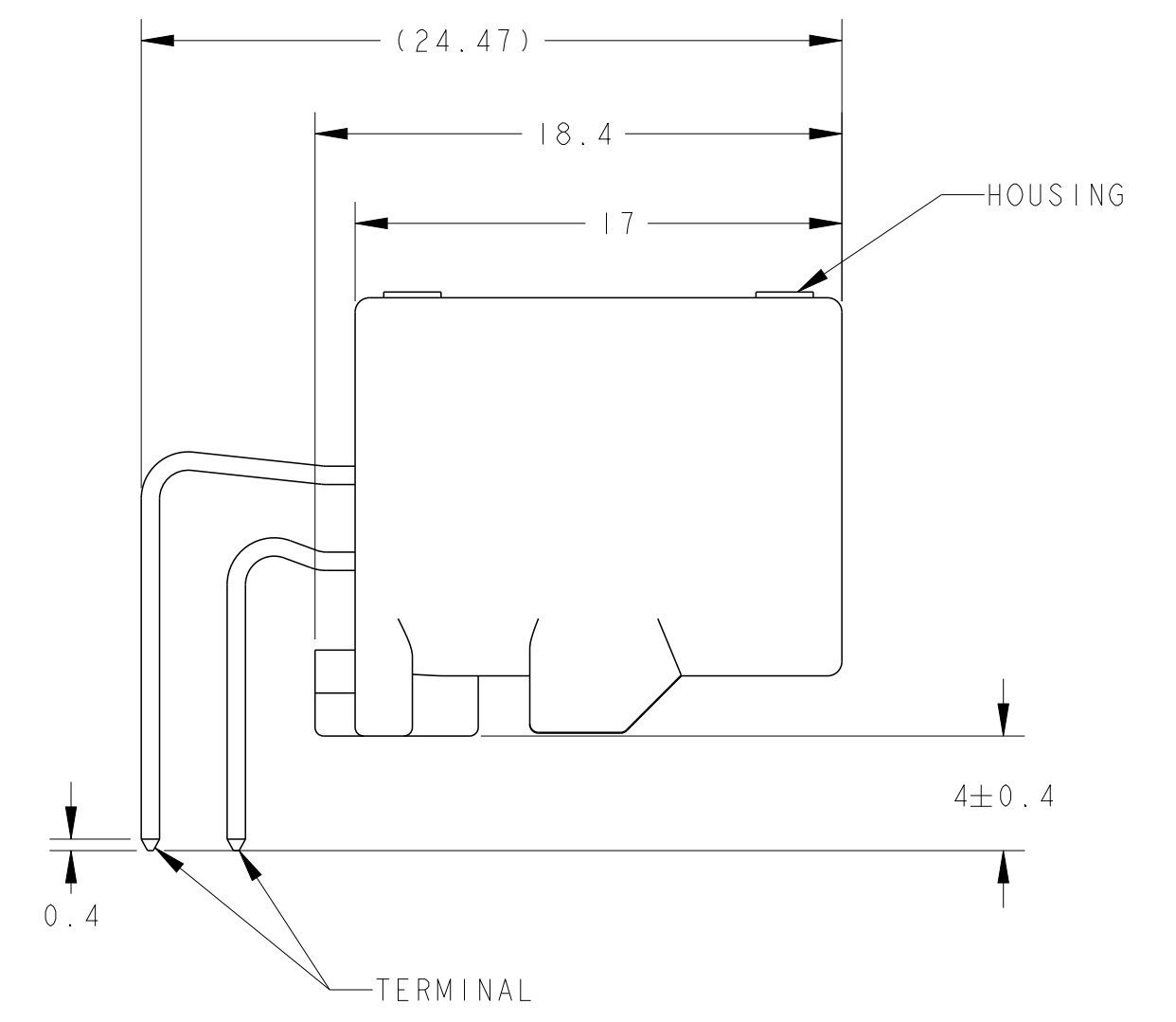
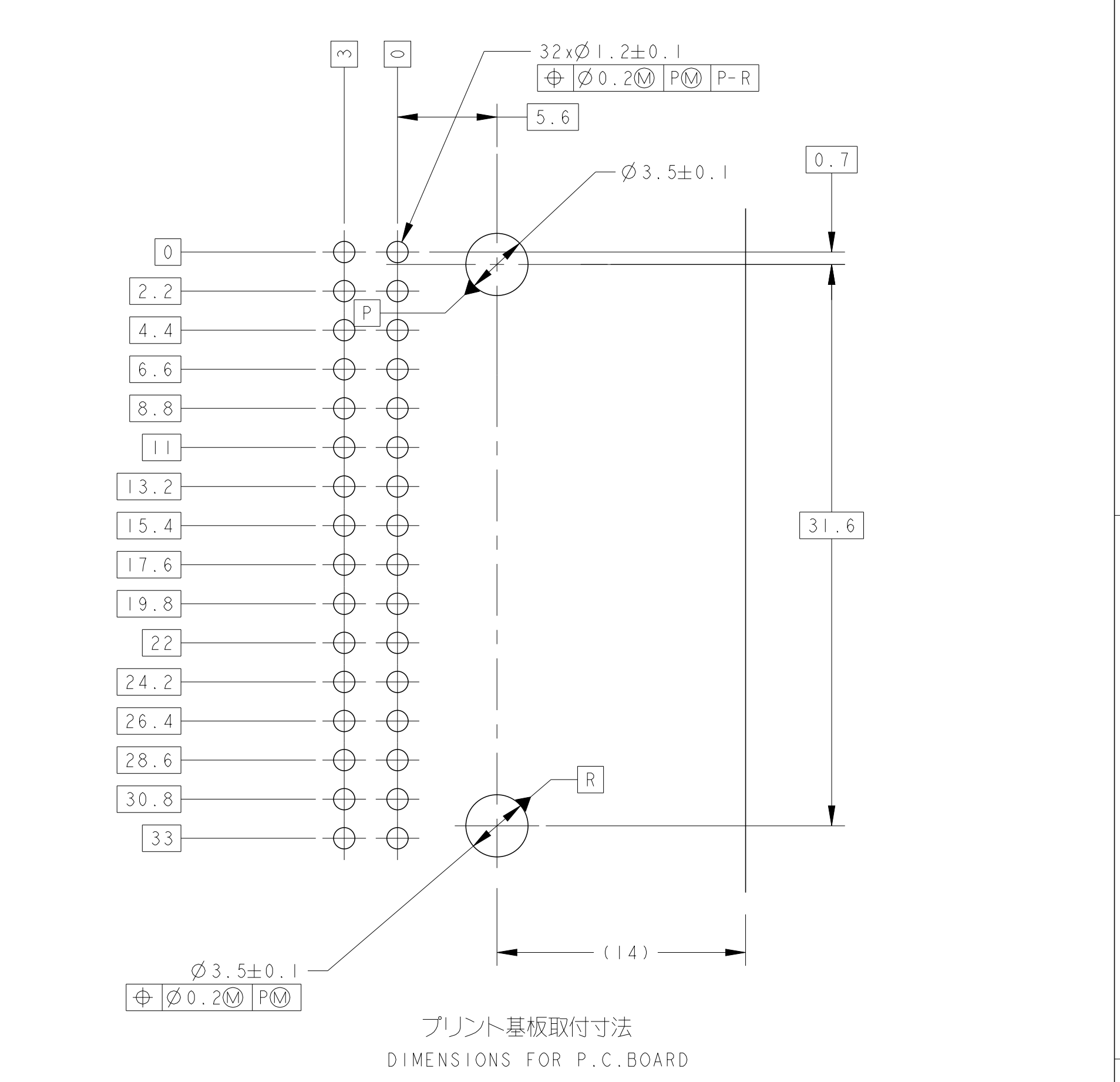
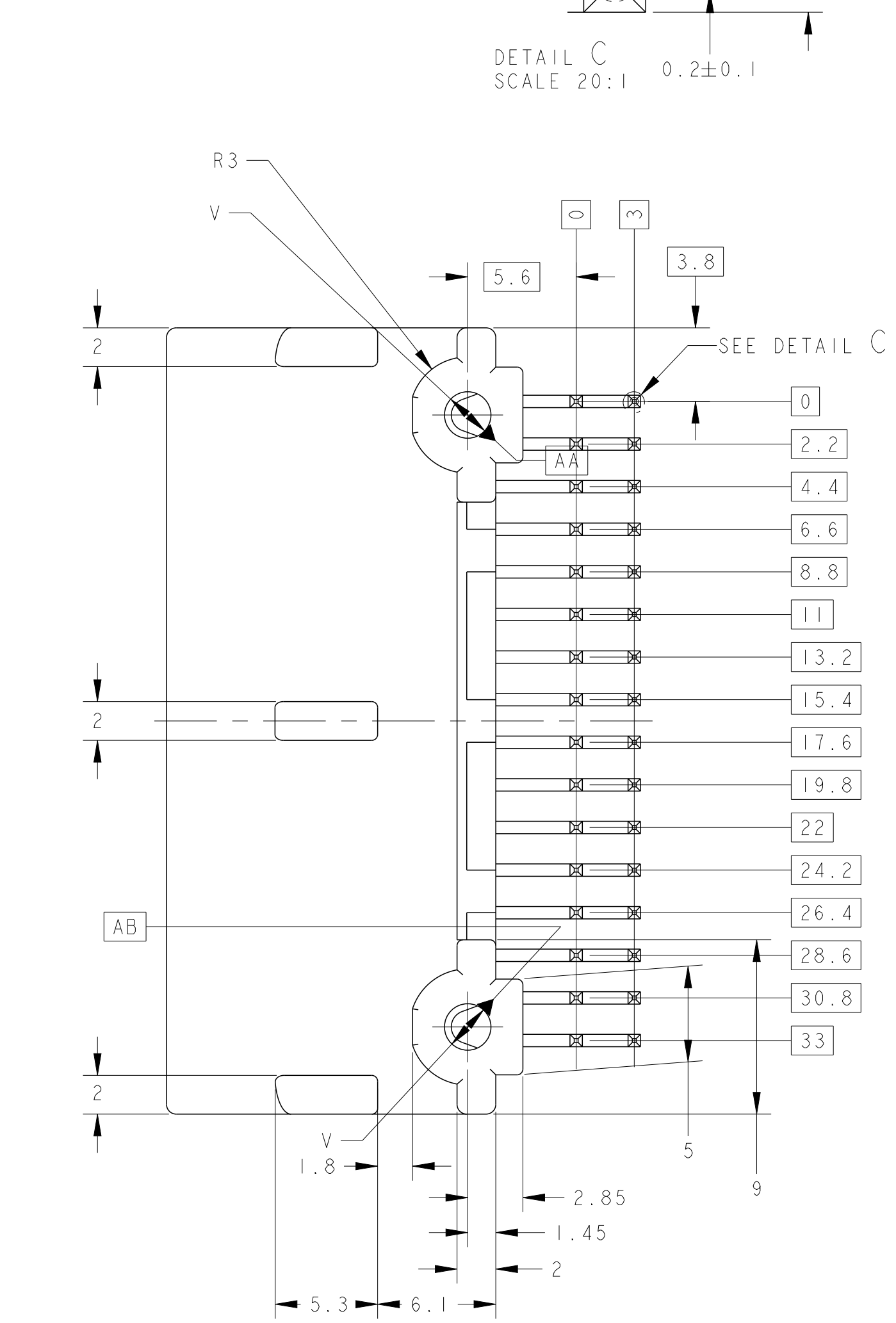
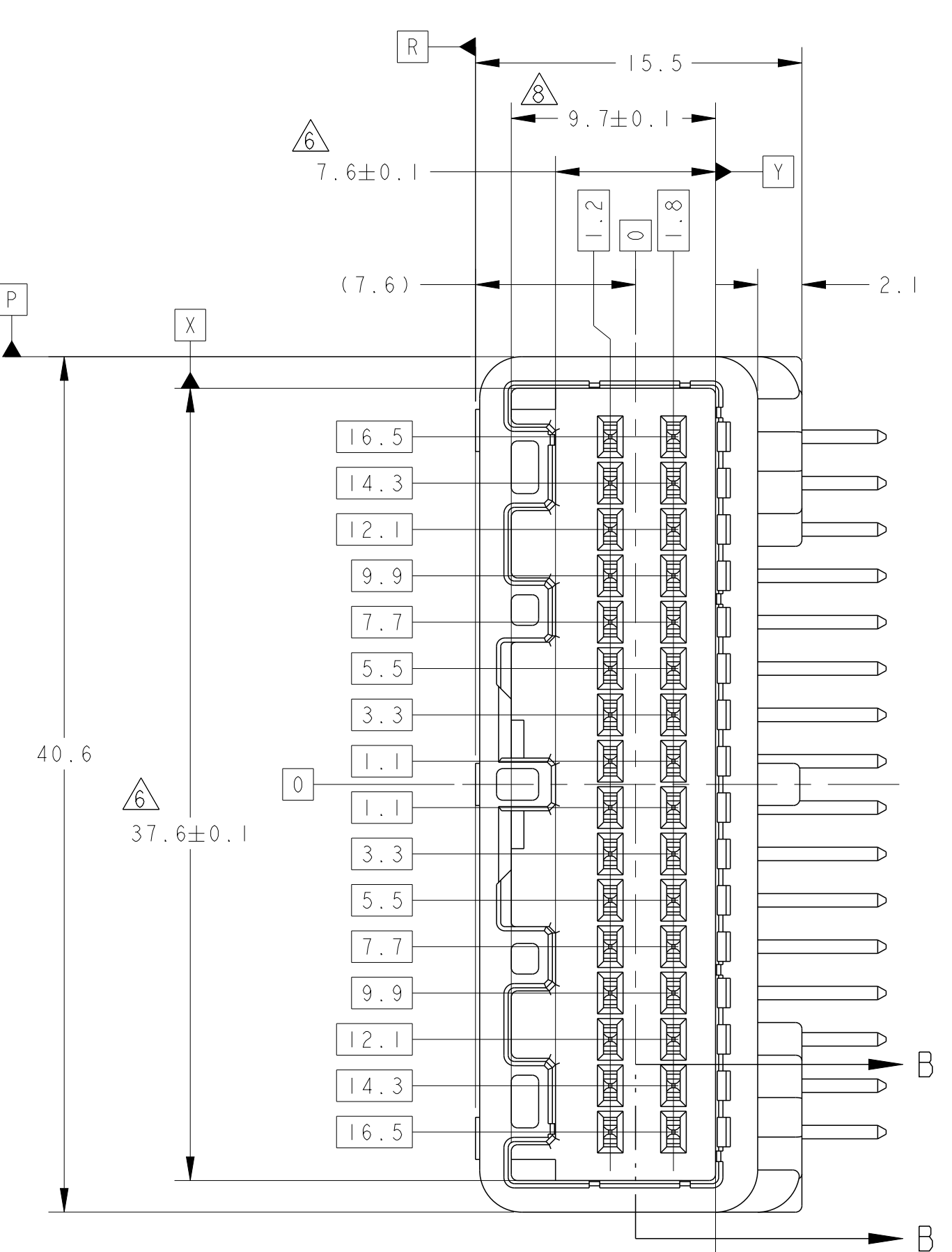
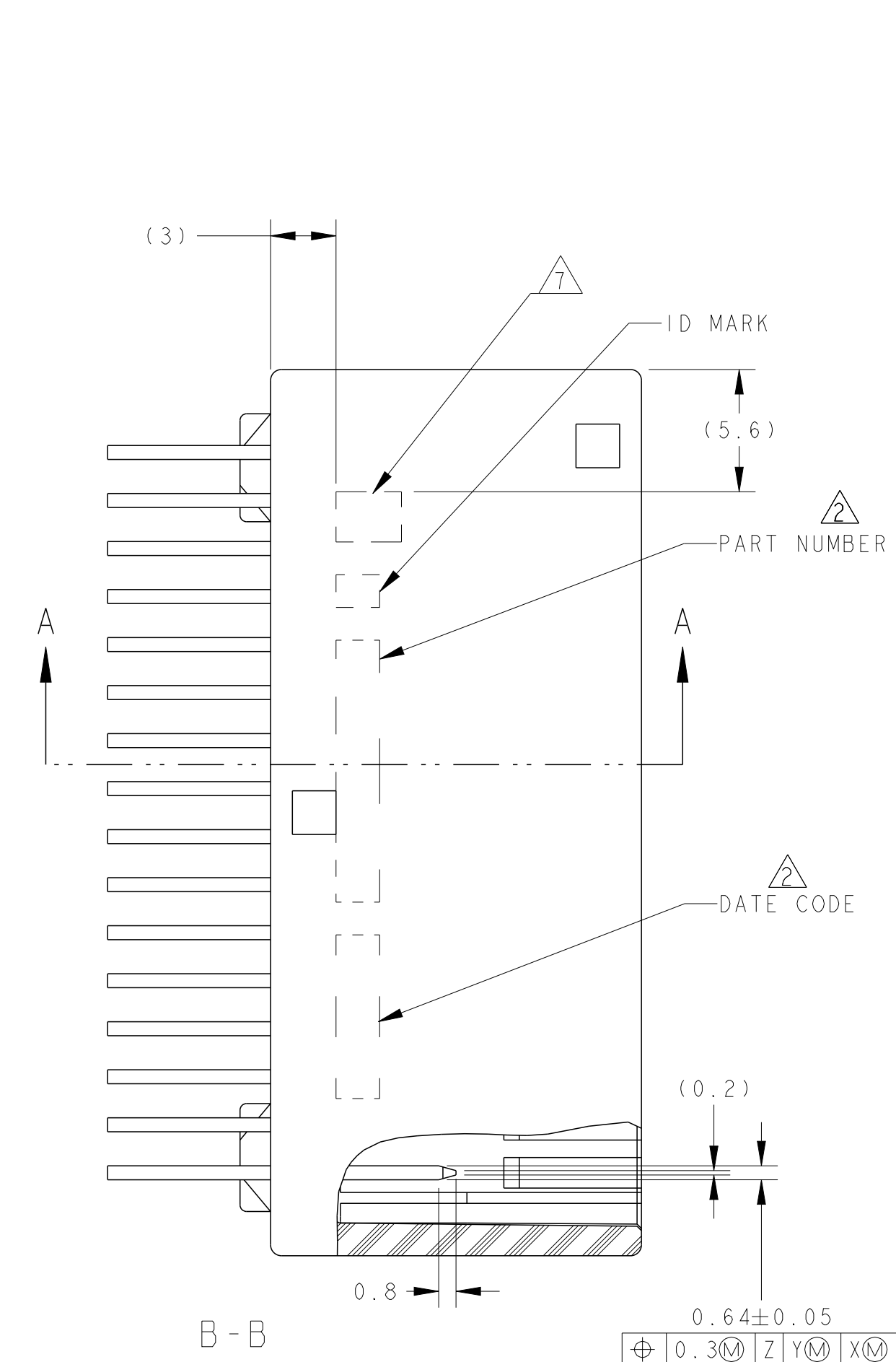
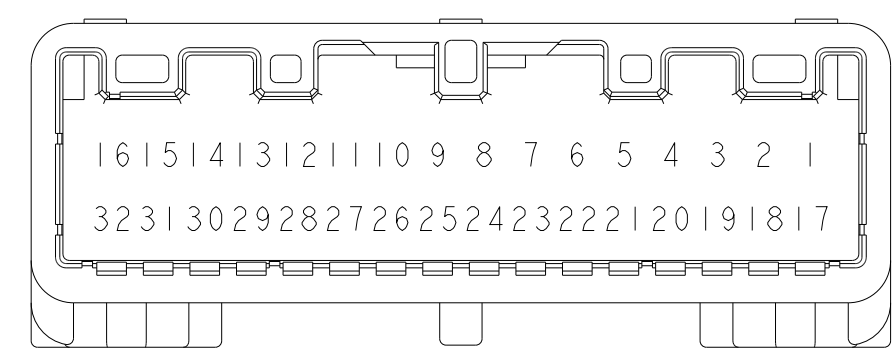


TABLE-1

POS	FEMALE HSG	メスハウジング
32	1318747	1717118

TABLE-2

プリント基板厚 (mm)	1.2	1.6
THICKNESS OF PCB (mm)		
固定用ねじ長さ (mm)	5	6
NOMINAL LENGTH OF SCREW (mm)		



POS	SIZE	Ø	BOX	TUBE	CONTACT	FINISH	LEAD	PACKING	WEIGHT	MARKING
60	8.0	Ø2.4	PAPER BOX	PLASTIC TUBE	SELECTIVE TIN (MATTE)	SELECTIVE GOLD	PBT GF15	BLACK	6318745-6	
62	8.0	Ø2.4	PLASTIC BOX	PLASTIC TUBE	SELECTIVE TIN (MATTE)	SELECTIVE TIN (BRIGHT)	PBT GF15	NATURAL	6318745-4	
60	8.0	Ø2.4	PAPER BOX	PLASTIC TUBE	SELECTIVE TIN (MATTE)	SELECTIVE GOLD	PBT GF15	NATURAL	6318745-3	
4	7.0	Ø2.63	PAPER BOX	PLASTIC TUBE	SELECTIVE TIN (MATTE)	SELECTIVE GOLD	SPS GF17	NATURAL	1-1318745-3	
7	8.0	Ø2.4	PLASTIC BOX	PLASTIC TUBE	SELECTIVE TIN (MATTE)	SELECTIVE TIN (BRIGHT)	PBT GF15	NATURAL	1-1318745-2	
6	8.0	Ø2.4	PAPER BOX	PLASTIC TUBE	SELECTIVE TIN (MATTE)	SELECTIVE TIN (BRIGHT)	PBT GF15	NATURAL	1-1318745-0	
5	8.0	Ø2.4	PAPER BOX	PLASTIC TUBE	SELECTIVE TIN (MATTE)	SELECTIVE TIN (BRIGHT)	PBT GF15	NATURAL	1318745-9	
3	7.0	Ø2.63	PLASTIC BOX	PLASTIC TUBE	SELECTIVE TIN (MATTE)	SELECTIVE TIN (BRIGHT)	SPS GF17	NATURAL	1318745-8	
4	7.0	Ø2.63	PLASTIC BOX	PLASTIC TUBE	SELECTIVE TIN (MATTE)	SELECTIVE GOLD	SPS GF17	NATURAL	1318745-7	
3	7.0	Ø2.63	PAPER BOX	PLASTIC TUBE	SELECTIVE TIN (MATTE)	SELECTIVE TIN (BRIGHT)	SPS GF17	NATURAL	1318745-5	
2	8.0	Ø2.4	PLASTIC BOX	PLASTIC TUBE	TIN LEAD	SELECTIVE GOLD	PBT GF15	NATURAL	1318745-4	
1	8.0	Ø2.4	PAPER BOX	PLASTIC TUBE	PRE-TIN	PBT GF15	NATURAL	1318745-2		
1	8.0	Ø2.4	PLASTIC BOX	PLASTIC TUBE	PRE-TIN	PBT GF15	NATURAL	1318745-1		
			OUTER	INNER	SOLDERING SIDE	CONTACT SIDE	HOUSING			
			分装	内装	半田付面	接合面	ハウジング			

- PLUG HOUSING TO BE MATED ; SEE TABLE-1.
- DATE CODE, PART NUMBER INDICATED
- RECOMMENDED SCREW : PAN-HEADED, TYPE 2 TAPPING SCREW, NOMINAL DIAMETER 3mm LENGTH; SEE TABLE-2 (JIS B1115, B1122).
- FASTENING TORQUE FOR SCREW (FOR REFERENCE): 0.392N·m REF.
- AS FOR THE HANDLING OF THIS PRODUCT, FOLLOW THE INSTRUCTION SHEET No.: 411-5928
- MEASURED AT 6mm FROM [Z]
- IDENTIFICATION MARK FOR THE CONTACT FINISH; SEE TABLE
- MEASURED AT 2mm FROM [Z]
- NO IDENTIFICATION MARK OF CONTACT FINISH AND ID MARK
- CIRCUIT NUMBER: SEE FIG. 1

- 接合相手ハウジング型番: TABLE-1 参照
- DATE CODE, PART NUMBER を表示
- 推奨取付ねじ: JIS B1115, B1122タッピングねじ, ねじ径3, 呼び径3, 長さ: TABLE-2参照
- ねじ締めトルク (参考): 0.392N·m REF.
- 本品の取扱いについては、取扱説明書 No.: 411-5928に従ってください
- [Z] より6mmの位置で測定。
- コンタクト上は識別用マーク; 表参照
- [Z] より2mmの位置で測定。
- コンタクト上は識別用マーク及びIDマークの刻印は無し
- 回路番号はFIG. 1参照

THIS DRAWING IS A CONTROLLED DOCUMENT.

DMN: N. YASUDA TOMAROO  
 CHK: N. SAI TOMAROO  
 APVD: N. SAI TOMAROO

PRODUCT SPEC: 108-5668  
 APPLICATION SPEC: 114-5250

SIZE: A1  
 CASE CODE: 100779  
 DRAWING NO: 1318745

RESTRICTED TO: 4:1 SHEET 1 OF 2 REV B8

4

3

2

1

THIS DRAWING IS UNPUBLISHED.

RELEASED FOR PUBLICATION

2015

© COPYRIGHT 2015

ALL RIGHTS RESERVED.

LOC  
J

DIST

REVISIONS

変更

P	LTR	DESCRIPTION	DATE	DWN	APVD
	-	SEE SHEET 1	-	-	-

Dimensions: (37.4) and (40.6)

Dimensions: (24.5), (15.8), (17.2)

CAP HOUSING ASSEMBLY

PLUG HOUSING ASSEMBLY

CAP ASSEMBLY & PLUG ASSEMBLY ENGAGEMENT DRAWING  
 キャップアッセンブリ & プラグアッセンブリ 嵌合図

THIS DRAWING IS A CONTROLLED DOCUMENT.

DWN  
N. YASUDA 10MAR00CHK  
N. SAI 10MAR00APVD  
N. SAI 10MAR00

PRODUCT SPEC

SEE SHEET 1 OF 2

APPLICATION SPEC

SEE SHEET 1 OF 2

WEIGHT

SEE SHEET 1 OF 2

NAME  
名称 025 SERIES 32 POSITION (PCB H-TYPE)  
CAP HOUSING ASSEMBLY

**STE** TE Connectivity

SIZE	CAGE CODE	DRAWING NO	RESTRICTED TO
A3	00779	C-1318745	-

DIMENSIONS:  
単位: 概  
mm

TOLERANCES UNLESS  
OTHERWISE SPECIFIED:  
一般公差 = ± 0.3

0 PLC	±
1 PLC	±0.1
2 PLC	±0.01
3 PLC	±0.001
4 PLC	±0.0001
ANGLES	±3'00"

MATERIAL  
材料 SEE SHEET 1 OF 2FINISH  
仕上 SEE SHEET 1 OF 2

CUSTOMER DRAWING

SCALE  
尺度 4:1

SHEET 2 OF 2

REV B8

1470-19 (3/11)

# Mouser Electronics

Authorized Distributor

Click to View Pricing, Inventory, Delivery & Lifecycle Information:

[TE Connectivity:](#)

[1318745-2](#)