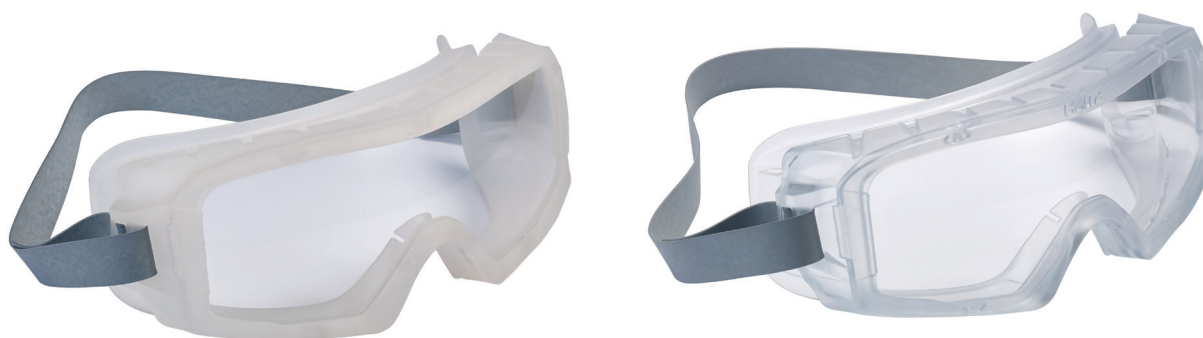


COVERALL CLEAN & AUTOCLAVE

FOR «CLEAN ROOMS»

The COVERALL AUTOCLAVE goggle has been especially developed to guarantee high protection & comfort in risky environments, like pharmaceuticals, micro-electronics or even surgery departments.

 PLATINUM



COVACLAVE



79 g

COVACLEAN



90 g

Ventilation on the upper part

- + HIGH-COMFORT AUTOCLAVABLE TPR FRAME**
- + INDIRECT VENTILATION ON THE TOP / SEALED AT THE BOTTOM**
- + OVERFLOW CHUTE FOR LIQUIDS**
- + FIT OVER PRESCRIPTION GLASSES**
- + ANTI-SCRATCH & ANTI-FOG COATING**
- + CLEAN ROOM NEOPRENE STRAP**

bolle
SAFETY

COVERALL CLEAN & AUTOCLAVE

FOR «CLEAN ROOMS»

MODEL	VERSIONS	REFERENCES	LENS MARKING	FRAME MARKING	COATINGS
COVERALL	Ventilated	COVACLEAN	2C-1,2 ☞ 1 BT €€	☞ EN166 3 4 BT €€	ASAF
	Semi-ventilated	COVACLAVE	2C-1,2 ☞ 1 FT KN €€	☞ EN166 3 4 FT €€	Anti-scratch/Anti-fog (☞)

LENS MARKING

Optical class symbols:

1. Continuous work

Mechanical strength symbols:

B. Medium energy impact, resists a 6 mm, 0.86 g ball at 120 m/s.

F. Low energy impact, resists a 6 mm, 0.86 g ball at 45 m/s.

T. The letter T, immediately after the mechanical strength symbol, authorises use for high speed particles at extreme temperatures.

Others symbols:

K. Resistance to surface damage by fine particles

N. Resistance to fogging

€€ European standard ☞ Manufacturer name

FRAME MARKING

EN 166: guaranteed minimum resistance of the protective eyewear against everyday risks including dropping the protective eyewear onto the ground, ageing by light exposure, exposure to heat or corrosion etc.

3. Liquid droplets or splashes.

4. Large dust particles > 5 microns.

F. Low energy impact, resists a 6 mm, 0.86 g ball at 45 m/s.

B. Medium energy impact, resists a 6 mm, 0.86 g ball at 120 m/s.

T. The letter T, immediately after the mechanical strength symbol, authorises use for high speed particles at extreme temperatures.

€€ European standard ☞ Manufacturer name

Bollé Safety product approval certificates to CE standards will be sent on request.

CLEANING AND STORAGE

CLEANING: The lenses should be cleaned regularly. Bollé Safety recommends only using the B-clean lens cleaning system.

MAINTENANCE: Pitted, scratched or damaged lenses must be replaced by replacing the complete product. If the frame is damaged also replace the complete product. After each use it is recommended to keep the spectacles or goggles in a microfiber pouch or rigid case.

STORAGE: All products must be stored in a dry and clean environment.

TECHNOLOGY

PLATINUM

The new exclusive scratch and fog resistant coating guarantees even more safety, reliability and comfort. Washable (water and soap), this permanent coating applied on both sides of the lens makes it highly scratch resistant and durably delays the appearance of fogging.

PACKAGING AND EAN 13 CODE		
	COVACLEAN	COVACLAVE
Individual plastic bag	3660740007850	3660740000646
5 safety goggles per box	3660740107857	3660740100643
105 safety goggles per outer pack	3660740207854	3660740200640

CHARACTERISTICS	
LENSES	PC - 2,2 mm - Curve 4
FRAME	PVC (CLEAN) / TPR (CLAVE)
TEMPLES	Non applicable
STRAP	Adjustable/ Neoprene
FOAM	No
MAINTENANCE AND CLEANING	Soapy water
STERILIZATION	121° / 20 mn / 15 Cycles



Europe Bollé Safety
95 rue Louis Guérin
69100 Villeurbanne - France
Tél. : 00 33 (0) 4 78 85 23 64
Fax : 00 33 (0) 4 78 85 28 56
contact@bolle-safety.com

bolle-safety.com

U.K. Bollé Safety
Unit C83 - Barwell Business Park Leatherhead Road - Chessington
Surrey - KT9 2NY
Tél. : 00 44 (0)208 391 4700
Fax : 00 44 (0)208 391 4733
e-mail : sales@bolle-safety.co.uk

bolle
SAFETY

01/10/2015