



BOARD LEVEL COOLING – Plug In 5912

Plug In 5912 is a series of plug in channel board level heat sinks designed to cool TO-220, TO-220-single gauge, and TO-262 devices. Representative image only.

ORDERING INFORMATION

Part Number	Device Type
591202B00000G	TO-220, TO-220-single gauge, TO-262
591202B03100G	TO-220, TO-220-single gauge, TO-262
591202B03700G	TO-220, TO-220-single gauge
591202B04000G	TO-220, TO-220-single gauge, TO-262



HEAT SINK DETAILS

Property	Details
Material	Aluminum
Finish	Black Anodize
Device Attachment Options	Integrated Spring Action Clips
Thermal Interface Material	-

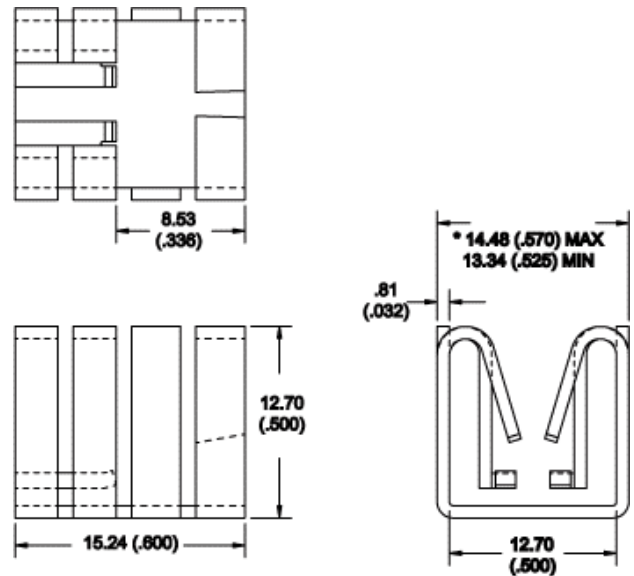
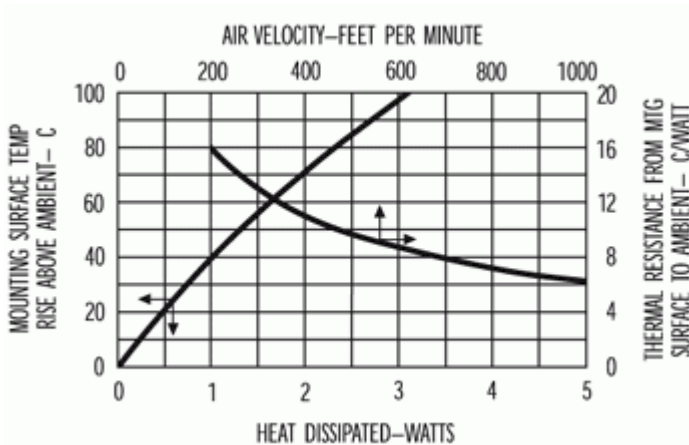
Property	Details
Heat Sink Width (mm)	12.70
Heat Sink Length (mm)	15.24
Heat Sink Height (mm)	14.48
Heat Sink Mounting Direction	Horizontal, Vertical

MECHANICAL & PERFORMANCE

Drawing dimensions are shown in mm, (in)

Part Number	“Y” Dim	“Z” Dim
591202B00000G	-	-
591202B03100G	8.28 (0.326)	1.73 (0.068)
591202B03700G	0.56 (0.022)	1.91 (0.075)
591202B04000G	0.41 (0.016)	1.75 (0.069)

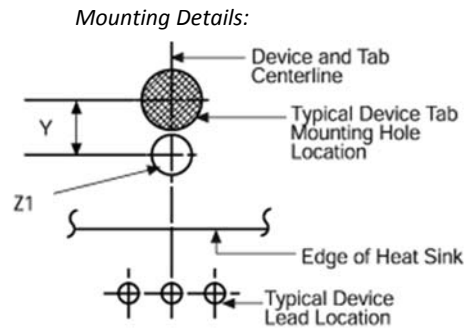
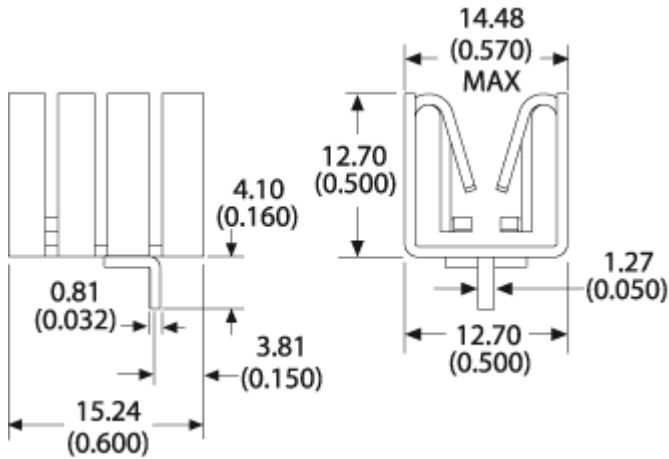
Part Number: 591202B00000G



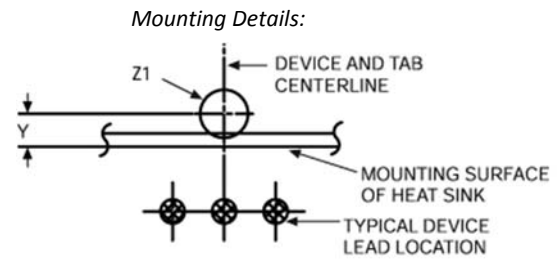
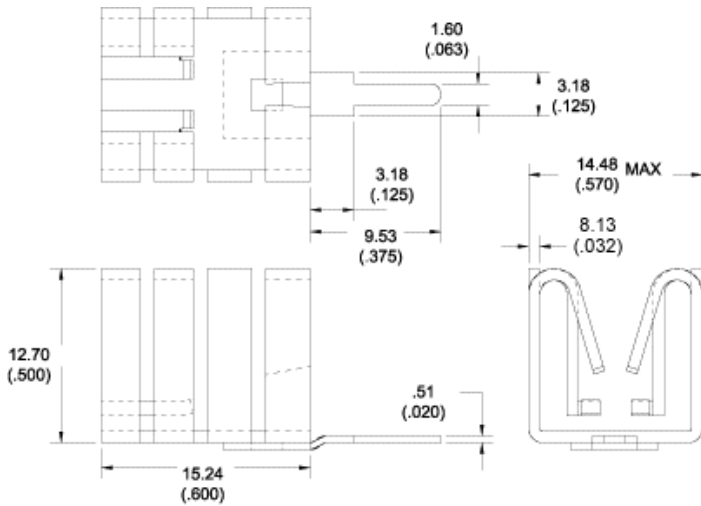
NOTES:
1. * DENOTES CRITICAL DIMENSION.

Board Level Cooling – Plug In 5912

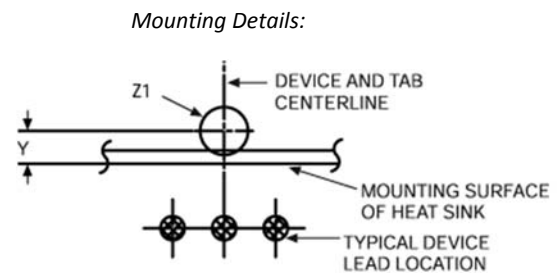
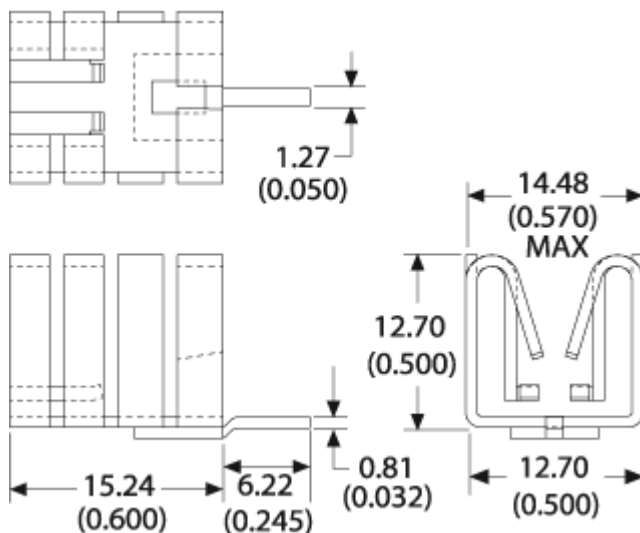
Part Number: 591202B03100G



Part Number: 591202B03700G



Part Number: 591202B04000G



Mouser Electronics

Authorized Distributor

Click to View Pricing, Inventory, Delivery & Lifecycle Information:

[Aavid:](#)

[591202B00000G](#) [591202B03100G](#) [591202B03700G](#) [591202B04000G](#)