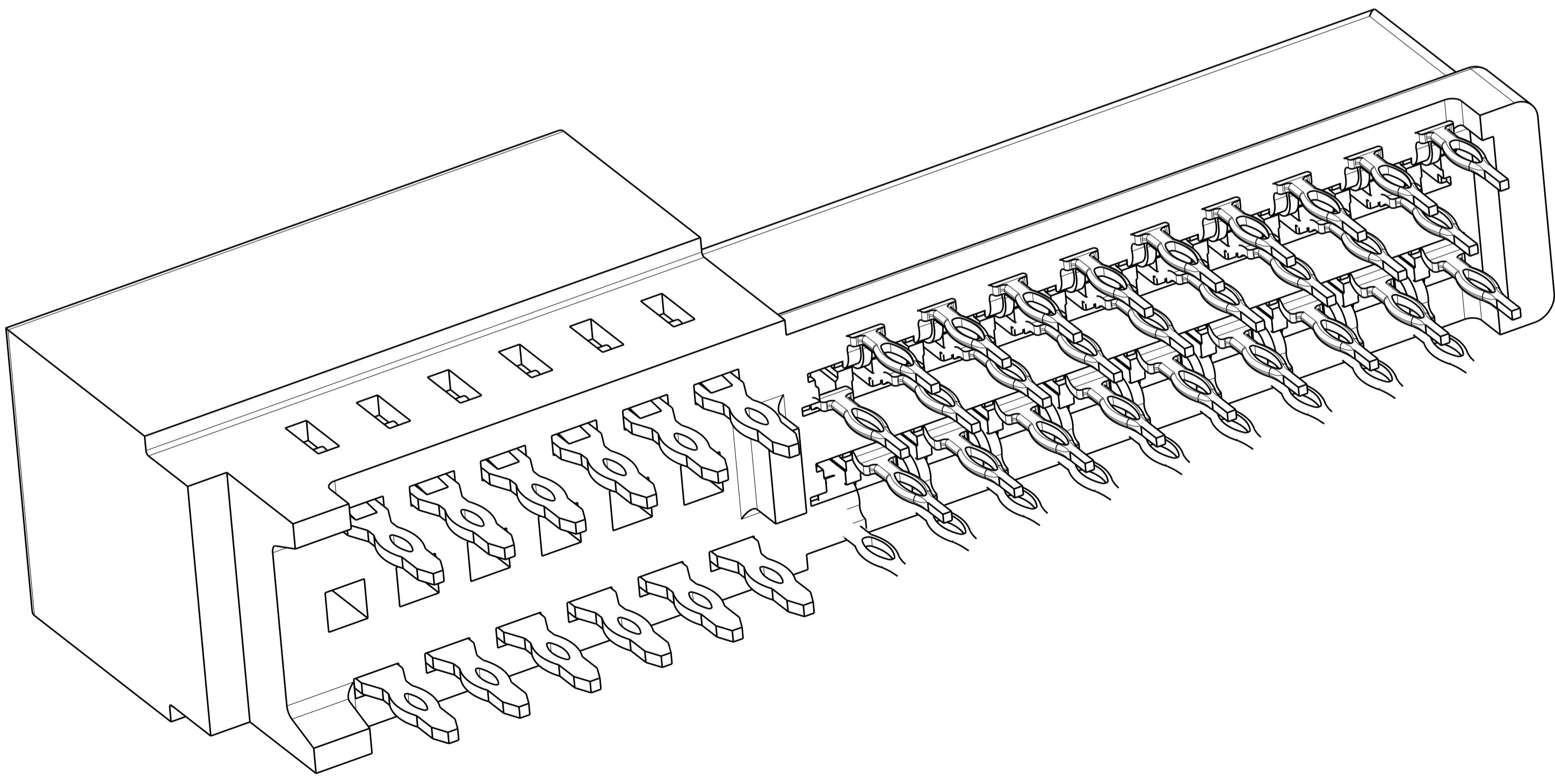
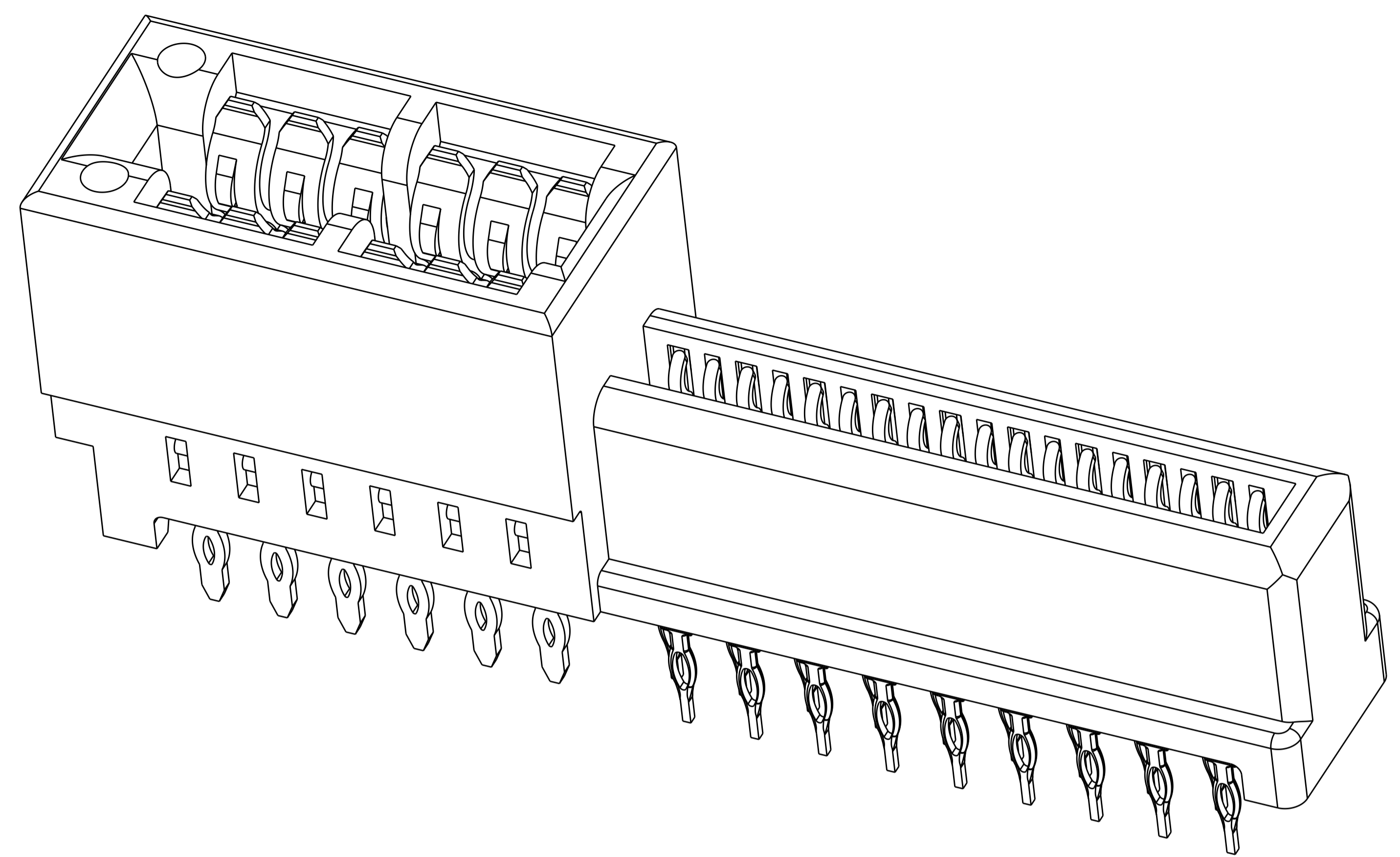


LOC		DIST		REVISIONS			
AA	00	P	LTN	DESCRIPTION	DATE	DWN	APVD
		A		INITIAL RELEASED	27FEB2013	AY	SZ
		A1		REV PER ECR-13-007783	13MAY2013	AY	SZ

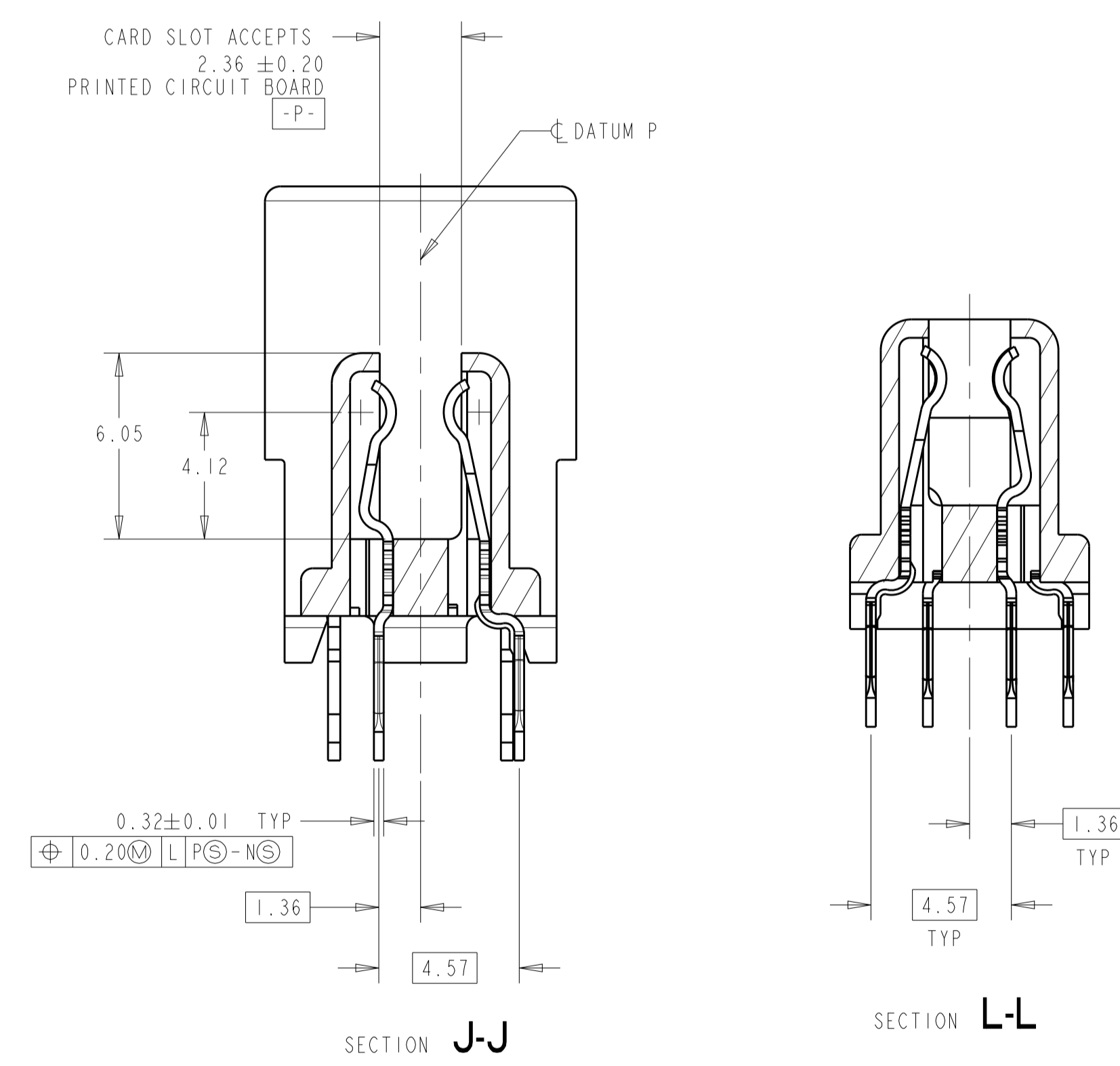
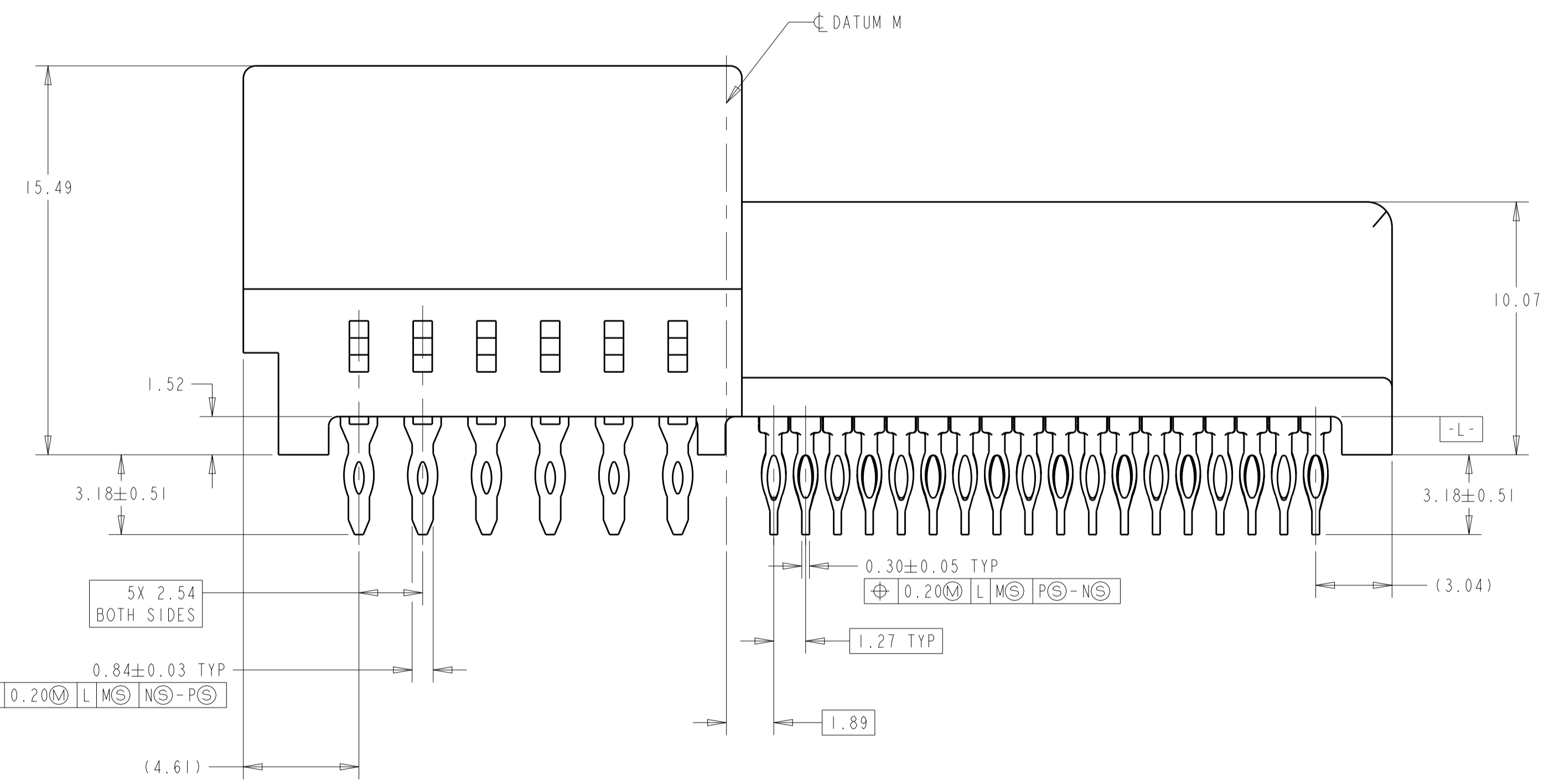
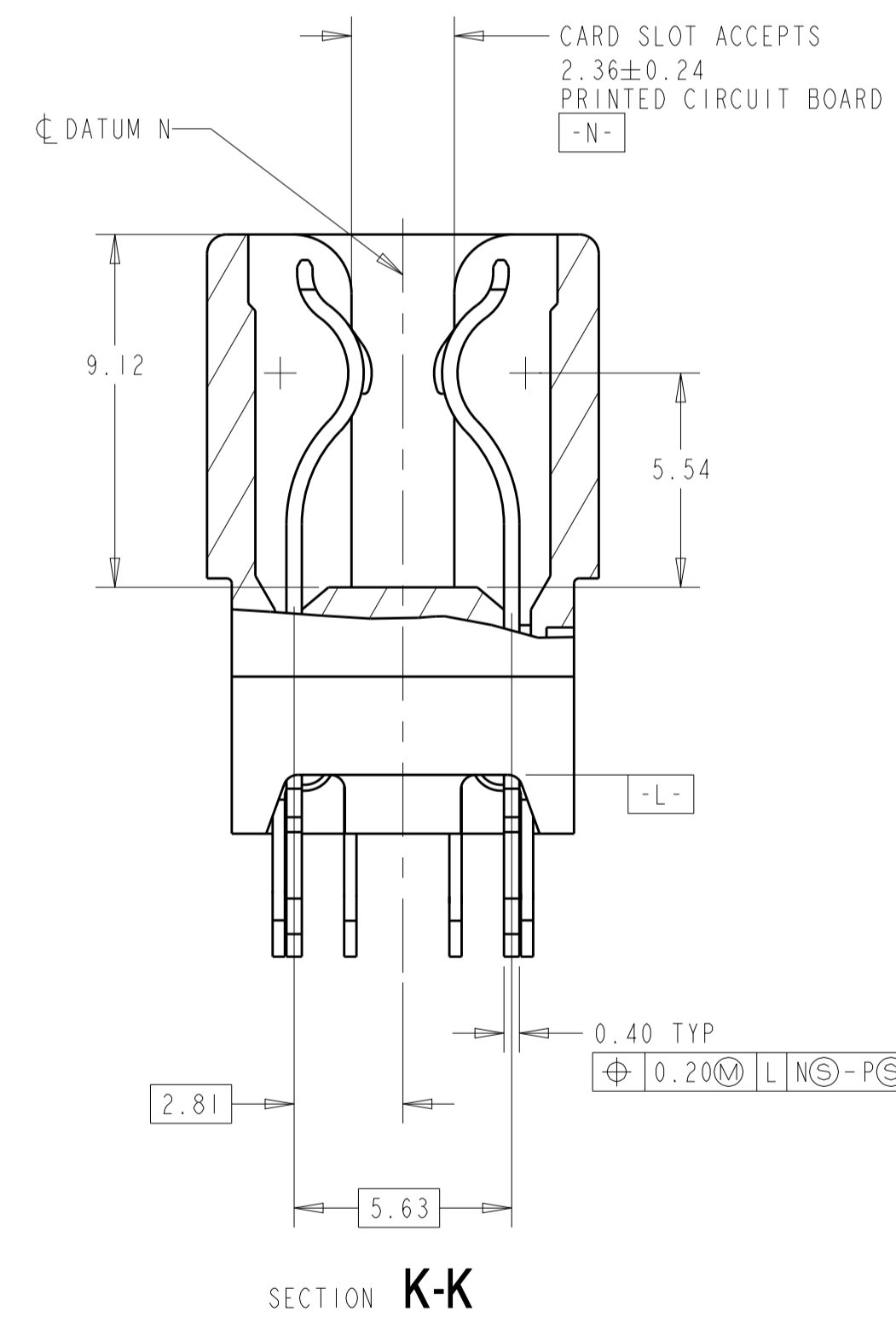
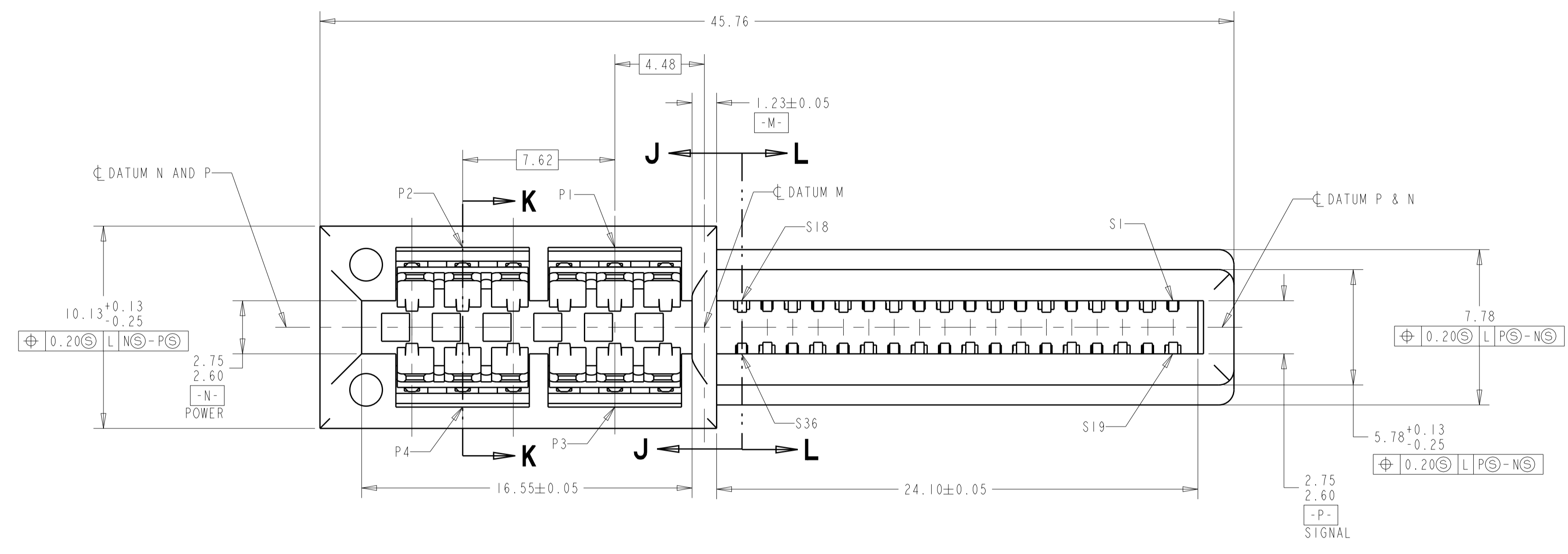


1. HOUSING: GLASS FILLED POLYESTER, COLOR - BLACK, UL94V-0 @ 1.50mm MIN. THICKNESS
 CONTACT: HIGH CONDUCTIVITY COPPER ALLOY
- (A1) 2. FINISH:
 CONTACTS - GOLD PLATE 0.76µm MIN THK IN MATING AREA
 OVER NICKEL 1.27µm MIN THK.
 SOLDER TAILS - MATTE TIN PLATE 1.27µm MIN THK.
 OVER NICKEL 1.27µm MIN THK.
- △3 DIMENSION SPECIFIED BY CUSTOMER
- △4 NO SHARP EDGES PERMITTED
5. FOR INSERTION INTO PCB USE TE PRESS FIT TOOL PART NUMBER 2063547-1
- △6 PRODUCT SPECIFICATION 108-1548 APPLIES TO 36 CHAMP .050 SERIES SIGNAL CONTACTS. PRODUCT SPECIFICATION 108-2202 APPLIES TO 4 SEC II POWER CONTACTS.
- △7 APPLICATION SPECIFICATION 114-6061 APPLIES TO CHAMP .050 SERIES SIGNAL CONTACTS. APPLICATION SPECIFICATION 114-13018 APPLIES TO 4 SEC II POWER CONTACTS.

2204061-2
 PART NO.

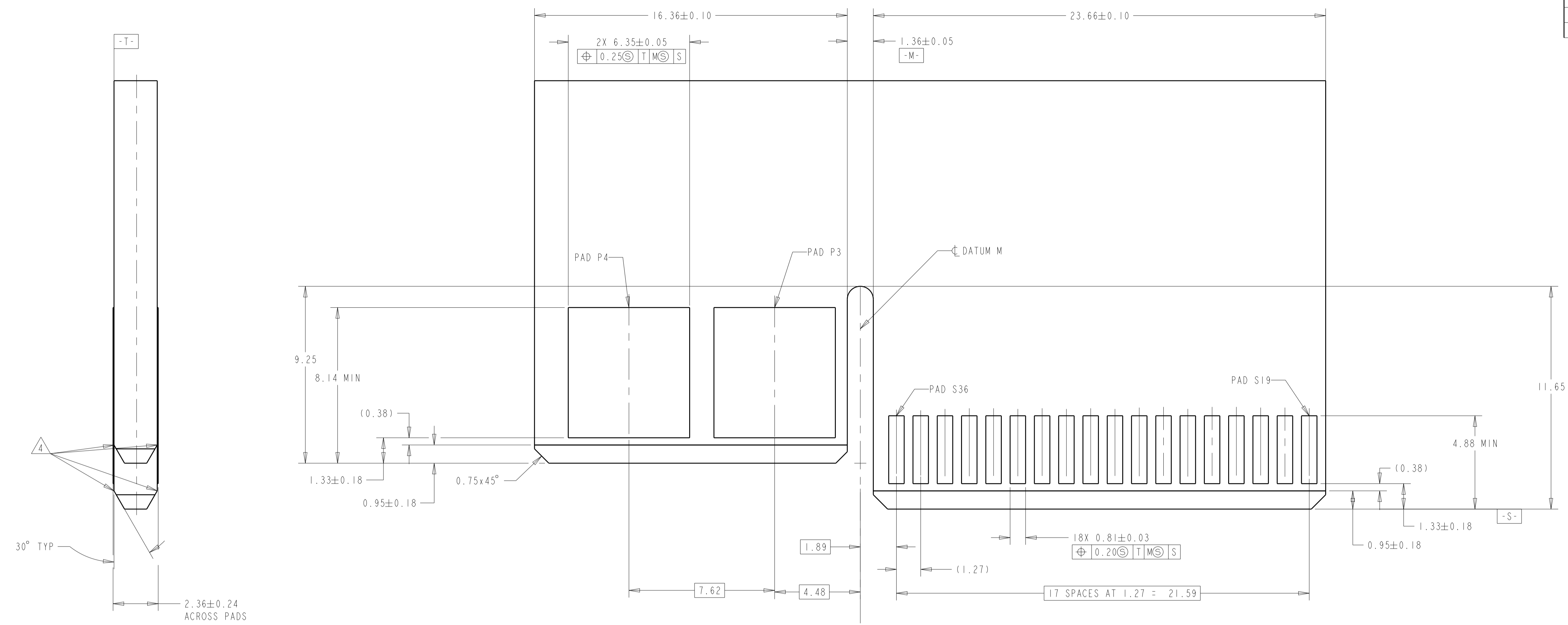
THIS DRAWING IS A CONTROLLED DOCUMENT.		DWN L.A.MAYER 28MAY2008	STE TE Connectivity
DIMENSIONS:		CHK A.FRANZIUM 28MAY2008	
TOLERANCES UNLESS OTHERWISE SPECIFIED:		APVD S.FLICKINGER 28MAY2008	
mm		NAME	
0 PLC ±	1 PLC ±.13	PRODUCT SPEC	CONNECTOR ASSEMBLY, SEC II POWER, 4 POWER AND 36 SIGNAL, PRESS FIT
2 PLC ±	3 PLC ±	APPLICATION SPEC	SIZE CAGE CODE DRAWING NO RESTRICTED TO
4 PLC ±	ANGLES ±.1°	FINISH	A1 00779 C=2204061
MATERIAL SEE NOTE 1	WEIGHT	CUSTOMER DRAWING	SCALE 3:1 SHEET 1 OF 3 REV A1

LOC	DIST	REVISIONS			
P	LTN	DESCRIPTION	DATE	DMN	APVD
AA	00	SEE SHEET 1			

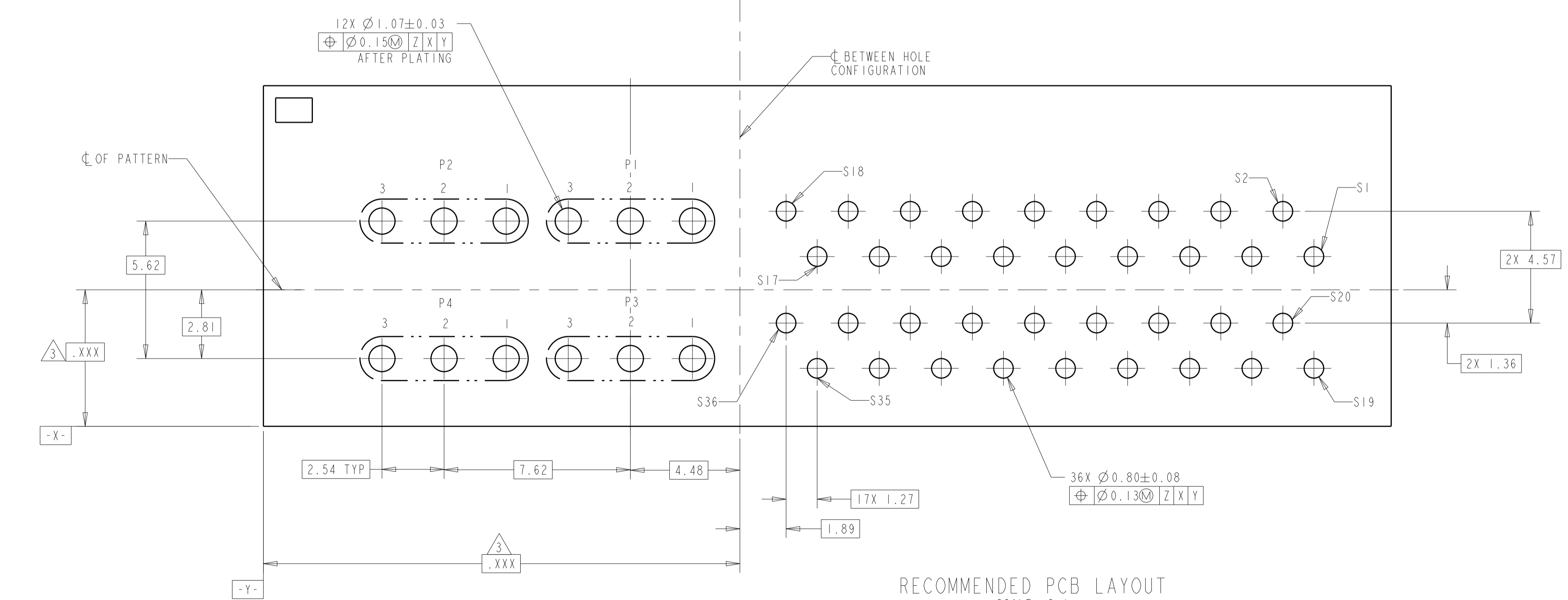


THIS DRAWING IS A CONTROLLED DOCUMENT.		DMN L.A.MAYER 28MAY2008	STE TE Connectivity
DIMENSIONS: mm		CHK A.FRANZIUM 28MAY2008	
TOLERANCES UNLESS OTHERWISE SPECIFIED:		APVD S.FLICKINGER 28MAY2008	NAME CONNECTOR ASSEMBLY, SEC II POWER, 4 POWER AND 36 SIGNAL, PRESS FIT
0 PLC ±		PRODUCT SPEC	
1 PLC ±0.13		APPLICATION SPEC	SIZE CAGE CODE DRAWING NO RESTRICTED TO
2 PLC ±		FINISH SEE NOTE 1	A1 00779 C=2204061
3 PLC ±		WEIGHT	SCALE 3:1 SHEET 2 OF 3 REV A1
4 PLC ±		CUSTOMER DRAWING	
ANGLES ±1°			

LOC		DIST		REVISIONS				
P	LTN	DATE	DMN	APVD	DESCRIPTION			
-	-	-	-	-	SEE SHEET 1			



RECOMMENDED DAUGHTER CARD CONFIGURATION
SCALE 8:1



RECOMMENDED PCB LAYOUT
SCALE 8:1

THIS DRAWING IS A CONTROLLED DOCUMENT.		DMN L.A.MAYER 28MAY2008	TE Connectivity										
DIMENSIONS: mm		CHK A.FRANZIUM 28MAY2008											
TOLERANCES UNLESS OTHERWISE SPECIFIED:		APVD S.FLICKINGER 28MAY2008	NAME CONNECTOR ASSEMBLY, SEC II POWER, 4 POWER AND 36 SIGNAL, PRESS FIT										
<table border="1"> <tr> <td>0 PLC</td> <td>±</td> </tr> <tr> <td>1 PLC</td> <td>±0.13</td> </tr> <tr> <td>2 PLC</td> <td>±</td> </tr> <tr> <td>3 PLC</td> <td>±</td> </tr> <tr> <td>4 PLC</td> <td>±</td> </tr> </table>		0 PLC	±	1 PLC	±0.13	2 PLC	±	3 PLC	±	4 PLC	±	PRODUCT SPEC	SIZE A1
0 PLC	±												
1 PLC	±0.13												
2 PLC	±												
3 PLC	±												
4 PLC	±												
MATERIAL SEE NOTE 1		FINISH SEE NOTE 1	RESTRICTED TO -										
CUSTOMER DRAWING		WEIGHT -	SCALE 4:1										
CAGE CODE 00779		DRAWING NO 2204061	SHEET 3 OF 3										
REV A1		DATE 28MAY2008	REV A1										