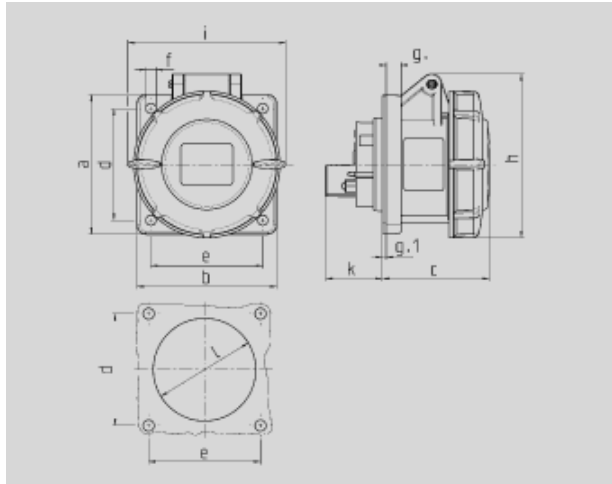




Part no. : 217A

Panel mounted receptacle



Drawing 1 MB 141	Amp. Poles	16			32		
		3	4	5	3	4	5
Dim. in mm	a	75	75	75	85	85	85
	b	75	75	75	75	75	75
	c	60	61	61	70	70	72
	d	60	60	60	60	60	60
	e	60	60	60	60	60	60
	f	5.5	5.5	5.5	5.5	5.5	5.5
	g.	8	8	8	8	8	8
	g.1	2	2	2	2	2	2
	h	83	88	95	99	99	105
	i	78	85	96	103	103	110
	k	31	32	32	39	39	39
	l	43	52	54	58	58	65
	Terminal for cond. cross section (mm ²) min.-max.	1.5	1.5	1.5	2.5	2.5	2.5
		-4	-4	-4	-10	-10	-10

 Article-group : **1046**

voltages : 110V

rated current : 16A

pole : 3 pole







IP protection types : IP67

position of ground contact : 4h

packing unit : 0010

weight : 150 g

PART NUMBERS

	V	110V	230V	400V	500V	>50-500V	
	Hz	50,60	50,60	50,60	50,60	100-300	300-500
	colour						
	amp.						
16 A	3	217A	218A	219A			
	4	220A	221A	222A	223A	224A	225A
	5	226A	227A	228A			
32 A	3	229A	230A	231A			
	4	232A	233A	234A	235A	236A	237A
	5	238A	239A	240A			