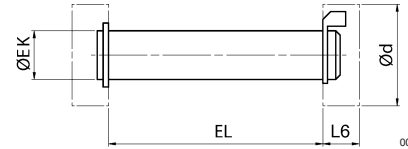


Cylinder accessories → Cylinder mountings; series CM1

AA4 axle



00105158



00105182

Part No.	Piston Ø	Ø EK e8	EL	Ø d 1)	L6 1)	Material	Surface	ISO 15552	Note
1823120020	32	10	45,2 +2	23	9	Steel	galvanized	-	2)
1823120021	40	12	52,2 +2	25	9	Steel	galvanized	-	2)
1823120022	50	12	60,2 +2	25	9	Steel	galvanized	-	2)
1823120023	63	16	70,2 +2	32	11	Steel	galvanized	-	2)
1823120024	80	16	90,2 +2	32	11	Steel	galvanized	-	2)
1823120025	100	20	110,2 +2	40	11	Steel	galvanized	-	2)
5236000092	125	25	132 +0,5	34.2	3,5	Steel	galvanized	ISO 15552	2)
5237000092	160, 200	30	172 +0,5	40.5	4	Steel	galvanized	ISO 15552	2)
5239000092	250	40	202 +0,5	52.6	6,5	Steel	galvanized	ISO 15552	2)
5239010092	320	45	222 +0,5	59.1	7	Steel	galvanized	ISO 15552	2)
3661302000	25, 32	10	29.2	19	2,4	Steel	galvanized	-	2)
3661303000	40, 50	12	34.4	21	2,8	Steel	galvanized	-	2)
3661304000	63, 80	16	48.4	28	2,8	Steel	galvanized	-	2)
3661306000	100	20	58.4	40	3,3	Steel	galvanized	-	2)
3661310000	125	25	69.4	40	3,8	Steel	galvanized	-	2)
3661312000	125, 160	30	86.5	42	4,7	Steel	galvanized	-	2)
3671312000	160, 200	30	93.8	53	5,1	Steel	galvanized	-	2)
3661320000	200	35	99.5	60	5,2	Steel	galvanized	-	2)

1) max.

2) Scope of delivery: pivot pins incl. circlips