

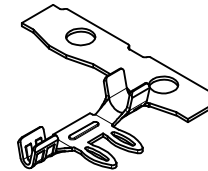
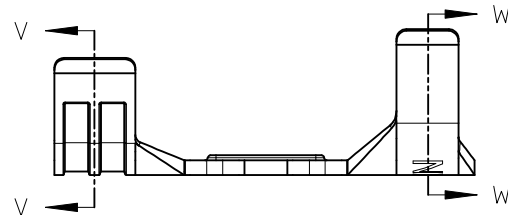
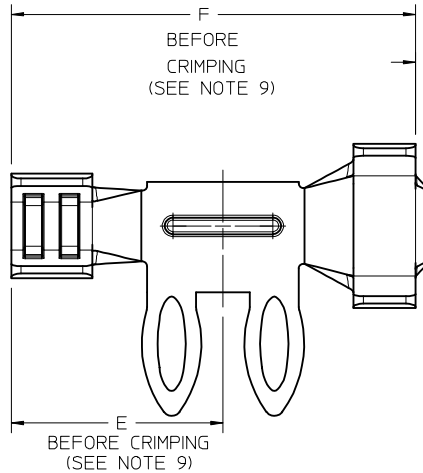
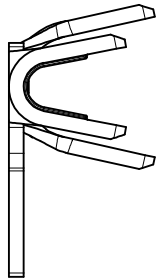
10	9	8	7	6	5	4	3	2	1		
MATERIAL NUMBER	MATERIAL	PLATING	COND SIZE	INS DIA RANGE (SEE NOTE 8)	MAX PCB THICKNESS (SEE NOTE 8)	A	B	C	D	E	F
172249-0100	BRASS	RMT	14-16 AWG	2.40-2.79 (UL 1007)	1.57 / .062"	3.40	3.55	4.20	3.65	4.33	8.27
172249-0200	BRASS	RMT	18-20 AWG	1.80-2.10 (UL 1007)	1.57 / .062"	2.14	2.40	3.36	2.99	4.33	8.27

LEGEND: 172249-WXYZ

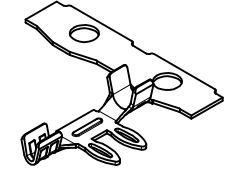
W = PLATING
(0 = REFLOWED MATTE TIN)

X = CRIMP SIZE
(1 = 14-16 AWG, (UL1007) INSUL / .062" PCB)
(2 = 18-20 AWG, (UL1007) INSUL / .062" PCB)

YZ = NOT USED
(00)



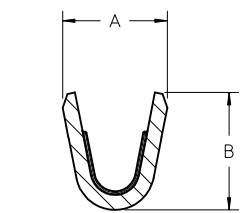
ISOMETRIC VIEW
SERIES 172249



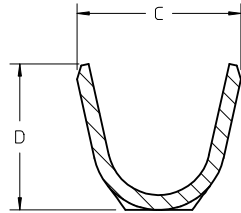
FOR 22-24 AND
26-28 AWG VERSIONS
SEE SERIES NO
172677

NOTES:

1. MATERIAL: BRASS
2. FINISH:
RMT = OVERALL REFLOWED MATTE TIN, 0.00152mm / .000060 inches MIN
OVER 0.00127 mm / .000050 inches MIN NICKEL, OVERALL
3. PRODUCT SPECIFICATION: PS-172249-001
4. PACKAGING INFORMATION: PK-172249-001
(24" CARDBOARD REEL)
5. MATES WITH: N/A (FOR SOLDERING TO PCB)
6. THIS PART CONFORMS TO CLASS B REQUIREMENTS OF COSMETIC SPEC PS-45499-002.
7. TERMINAL DESIGNED FOR THRU-HOLE SOLDERING, NOT FOR PRESS-FIT. INTERFERENCE FIT PROVIDES RETENTION OF TERMINAL TO BOARD DURING SOLDERING ONLY.
8. INSULATION DIAMETER RANGES AND MAX PCB THICKNESS SHOWN ARE GUIDELINES TO PRODUCE 0.50mm / (0.020 inches) OR MORE SOLDER-TAIL PROTRUSION.
9. CRIMPING PROCESS CAUSES TERMINAL GROWTH OF APPROXIMATELY 1.0mm / (0.04 inches).
10. INCLUDING TERMINAL GROWTH AND WIRE BRUSH LENGTH.



SECTION V-V
CONDUCTOR CRIMP

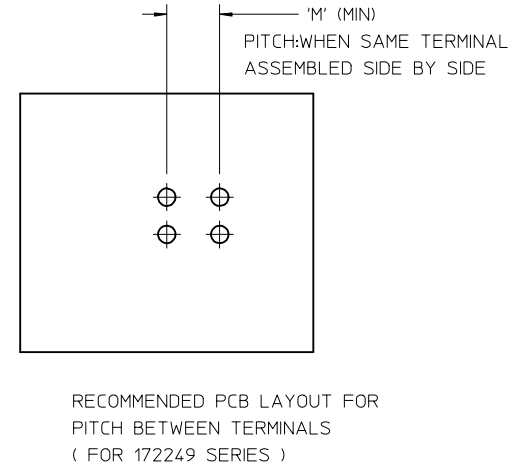
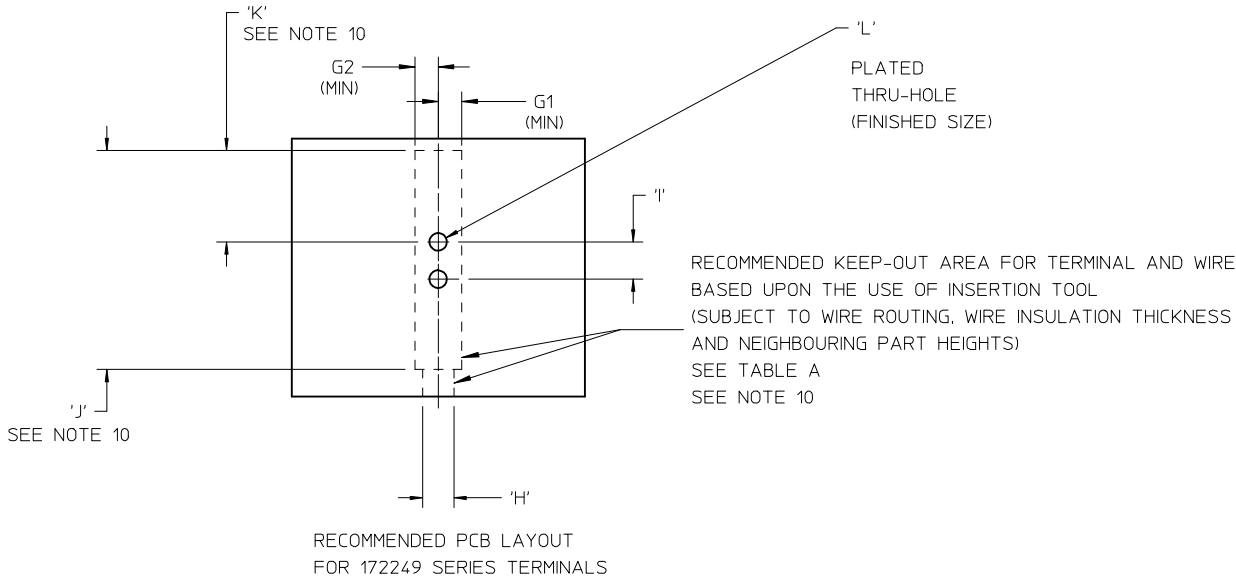


SECTION W-W
INSULATION CRIMP

KEEP OUT AREA DIM'S CHANGED EC NO: UCP2015-0803 DRAWN:SS06 CHKD: APPR:RHODGE B	DESCRIPTION 2014/08/25 2014/09/12	QUALITY SYMBOLS	GENERAL TOLERANCES (UNLESS SPECIFIED)	DIMENSION STYLE MM ONLY	SCALE 10:1	DESIGN UNITS METRIC	THIRD ANGLE PROJECTION	
		▽=0	4 PLACES ± --- ± ---	DRAWN BY ISHWARG	DATE 2013/10/19	TITLE 14-20 AWG SOLDER RIGHT TERMINAL		
		▽=0	3 PLACES ± --- ± ---	CHECKED BY	DATE			
		▽=0	2 PLACES ± 0.25 ± ---	APPROVED BY RHODGE	DATE 2013/11/19	MATERIAL NO.	DOCUMENT NO. SD-172249-001	SHEET NO. 1 OF 2
ANGULAR ± 1/2° DRAFT WHERE APPLICABLE MUST REMAIN WITHIN DIMENSIONS			SIZE B	THIS DRAWING CONTAINS INFORMATION THAT IS PROPRIETARY TO MOLEX INCORPORATED AND SHOULD NOT BE USED WITHOUT WRITTEN PERMISSION				

TABLE A

MATERIAL NUMBER	KEEP OUT ZONE 1: WHEN THE NEIGHBOUR PARTS HEIGHT IS LESS THAN 4.0MM		KEEP OUT ZONE 2: WHEN THE NEIGHBOUR PARTS HEIGHT IS MORE THAN 4.0 MM AND LESS THAN 30.0 MM							PITCH (WHEN SAME TERMINAL ASSEMBLED SIDE BY SIDE)
	G1	G2	G1	G2	H	I ±0.08	J	K	L ∅±0.05	'M' (MIN)
172249-0100	2.50	5.40	4.75	7.90	4.29	2.10	10.00	4.75	1.10	6.00
172249-0200	2.50	5.25	4.75	7.85	3.60	2.10	10.00	4.75	1.10	5.40



KEEP OUT AREA DIMS CHANGED EC NO: UCP2015-0803 DRAWN:SS06 CHKD: APPR:RHODGE	DESCRIPTION 2014/08/25 2014/09/12	QUALITY SYMBOLS	GENERAL TOLERANCES (UNLESS SPECIFIED)	DIMENSION STYLE MM ONLY	SCALE 2:1	DESIGN UNITS METRIC	THIRD ANGLE PROJECTION
		$\nabla=0$ $\nabla=0$ $\nabla=0$	4 PLACES ± --- ± --- 3 PLACES ± --- ± --- 2 PLACES ± 0.25 ± --- 1 PLACE ± 0.35 ± --- 0 PLACE ± --- ± ---	DRAWN BY ISHWARG DATE 2013/10/19 CHECKED BY DATE	TITLE 14-20 AWG SOLDER RIGHT TERMINAL		
		ANGULAR ±1/2° DRAFT WHERE APPLICABLE MUST REMAIN WITHIN DIMENSIONS	APPROVED BY RHODGE DATE 2013/11/19	MATERIAL NO. SEE CHART	DOCUMENT NO. SD-172249-001		
		SIZE B	THIS DRAWING CONTAINS INFORMATION THAT IS PROPRIETARY TO MOLEX INCORPORATED AND SHOULD NOT BE USED WITHOUT WRITTEN PERMISSION		SHEET NO. 2 OF 2		