

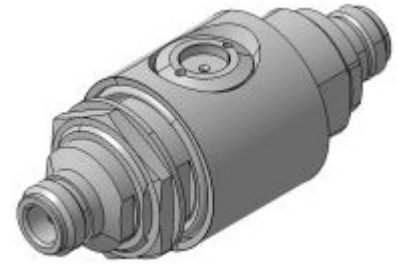
## EMP Protector 3407.17.0067

### Description

Quarter-wave stub technology with integrated high-pass filter

#### Benefits

Broad-band design  
Space saving inline design  
Compliant to IEC 61643-21



### Product Configuration

Main path connectors	Port 1: <u>unprotected</u> , N jack (female) - Port 2: <u>protected</u> , N jack (female)
Mounting and grounding	MH110 (bulkhead mounting), M6 (screw), brk (bracket)
Side of bulkhead	both
Design speciality	inline design

### Technical Data

#### Electrical Data

Impedance	50 $\Omega$
Frequency range	806 - 2500 MHz
Return loss	$\geq 26$ dB
Insertion loss	$\leq 0.1$ dB
RF CW power	$\leq 500$ W
PIM 3rd order	not specified

Surge current handling capability	25 single / 20 multiple kA (test pulse 8/20 $\mu$ s)
Residual pulse energy	0.03 $\mu$ J typically (test pulse 4 kV 1.2/50 $\mu$ s / 2 kA 8/20 $\mu$ s) main path - protected side

#### Mechanical Data

Number of matings	500
Weight	489 g

#### Environmental Data

Operating temperature	-40 °C to +85 °C
Waterproof degree	IP65 (according to IEC 60529, data refer to the coupled state)
2011/65/EU (RoHS - including 2015/863 and 2017/2102)	compliant acc. Annex III

#### Material Data

Piece Parts	Material	Surface Plating
Housing	Brass	SUCOPLATE (R) Plating
Port 1 center contact	Copper Beryllium Alloy	Gold Plating (without Nickel underplating)
Port 2 center contact	Copper Beryllium Alloy	Gold Plating (without Nickel underplating)

### Related Documents

Outline drawing	DOU-00014907.1
Mounting instruction	DOC-0000176104

# Mouser Electronics

Authorized Distributor

Click to View Pricing, Inventory, Delivery & Lifecycle Information:

[HUBER+SUHNER:](#)

[3407.17.0067](#)