



FM SERIES

10 AMP and 20 AMP FILTER MODULE



FEATURES

- * Compact Size 2"x1", 2"x1.6"
- * PCB Mount
- * 10A and 20A Filter Module
- * 75VDC Input Voltage Maximum
- * Suitable for use with Half Brick And Quarter Brick Series



MODEL NUMBER	INPUT VOLTAGE	INPUT SURGE VOLTAGE	OUTPUT RATED CURRENT	DC RESISTANCE (+Vin to +Vo)	DC RESISTANCE (-Vin to -Vo)
FM10-100	75 VDC max.	100 VDC max.	10 A max.	11.5 mΩ typ.	4.5 mΩ typ.
FM20-100	75 VDC max.	100 VDC max.	20 A max.	9.5 mΩ typ.	5.7 mΩ typ.

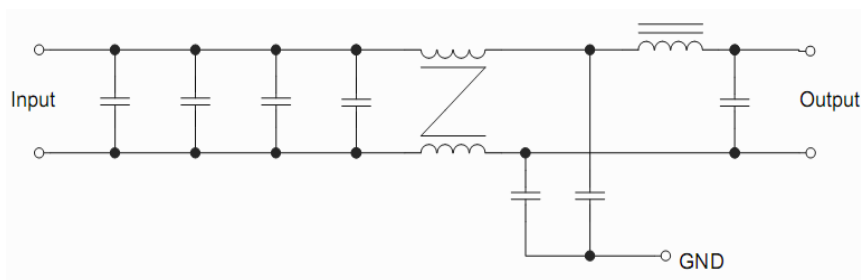


Figure1 Internal Schematic for FM10-100 Module

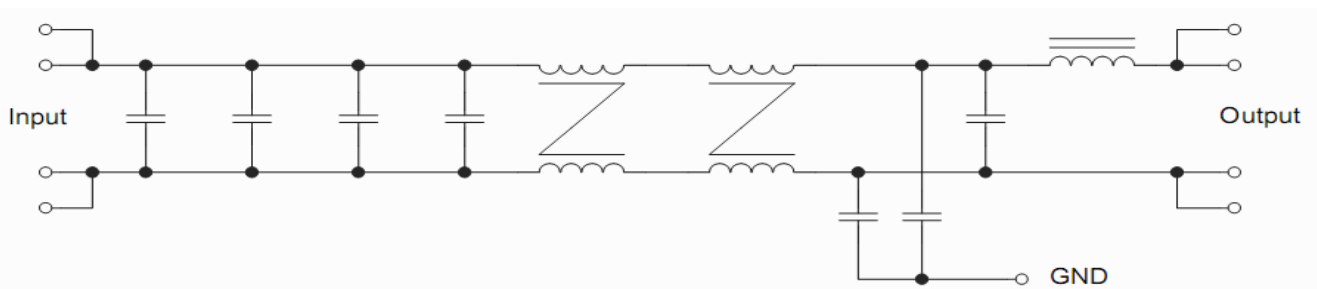


Figure2 Internal Schematic for FM20-100 Module

Mouser Electronics

Authorized Distributor

Click to View Pricing, Inventory, Delivery & Lifecycle Information:

[Cincon:](#)

[FM10D200P](#)