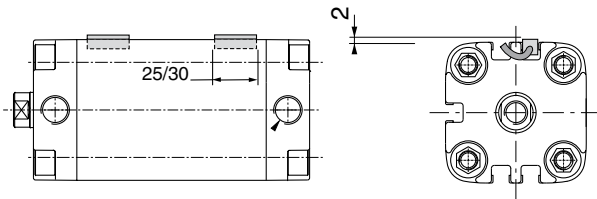


FOR "T" GROOVE CYLINDERS

series	page	Ø (mm)	code fastening kit
441	P215	32 ... 100	(1)
449	P226	32 ... 100	
453	P229-2	32 ... 100	

(1) Fastening mini-kit (special nut + screw) supplied **with** detectors



NOTE:

Series 441 cylinders Ø 32-100 mm : 6 "T" grooves

Series 449 cylinders Ø 20-25 mm : 4 "T" grooves
Ø 32-100 mm : 5 "T" grooves

Series 453 cylinders Ø 32-100 mm : 5 "T" grooves

In order to control the **max. end** of cylinder stroke, the detectors must be mounted in the following direction:

Series 441-449 cylinders:

Ø32-40: cable oriented towards the middle of the cylinder
Ø50-100: any position

Series 453 cylinder:

Ø32-40: cable oriented towards the middle of the cylinder
Ø50-100: any position

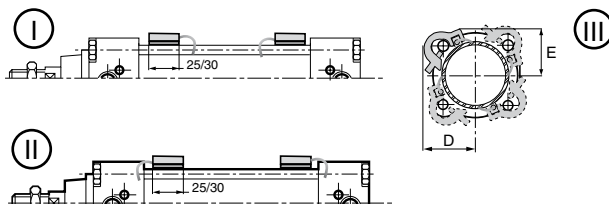
FOR TIE RODS CYLINDERS



series	page	Ø (mm)	code fastening kit	
			lead outlet version	M8 connector integrated version
437	P245	25	P494AM129200A00	P499440617MN001
450 437	P229-9 P245	32-40	P494A3129200A00	
		50-63-80	P494A5129200A00	
		100	P494A8129200A00	P4994406183N001
		125	P494AP129200A00	
		160-200	P494AP129200A00	-



Ø cylinder	25	32	40	50	63	80	100	125	160	200
D	24	30	33	38	44	50	69	77	89	104
E	24	26	30	35	39	49	61	69	87	101



❶ It is possible to fasten the detector with its electric outlet to the centre of the cylinder (in order to be able to control the **max. end** of travel of the cylinder)

❷ In order to fasten the detector with its electric outlet to the rear, rotate the **unit** detector + collar by 180°

❸ The detectors can be mounted on any one of the 4 **tie rods**.

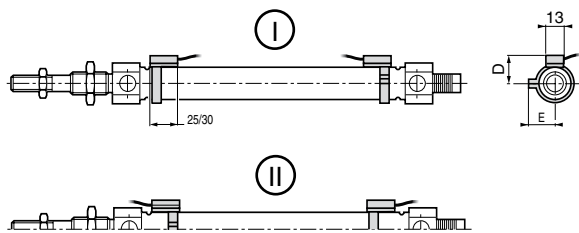


FOR ROUND CYLINDERS

series	page	Ø (mm)	code fastening kit	
			plastic	stainless steel (AISI 303 + 304)
435 438 431	P220 P225 P255	8-10	-	P494AG129600A00
		12	P494AJ129300A00	P494AK129600A00
		16	P494AK129300A00	P494AK129600A00
		20	P494AL129300A00	P494AL129600A00
		25	P494AM129300A00	P494AL129600A00
		32	P494A3129300A00	P494A3129600A00
		40	P494A4129300A00	P494A4129600A00
		50	-	P494A5129600A00
		63	-	P494A6129600A00
80	-	P494A8129600A00		
436	P243	250	-	P494AS129200A00

Ø 12 to 40 mm

Ø 8 to 80 mm



It is possible to mount magnetic detectors for **intermediate** position indication : mounting by collar

Ø 8-20 : any position.

Ø 25-80 : cable oriented towards the cylinder ends

Ø cylinder	8	10	12	16	20	25	32	40	50	63
D	14,5	15,5	15	16,5	19	21,5	26,5	31	38	45
E	13,5	14,5	16,5	19	20,5	23	29,5	31,5	36,5	43,5

Ⓛ On all diameters, it is possible to mount the detector with its electrical outlet facing towards the cylinder **barrel** (in order to be able to control the **max. end** of travel of the cylinder).

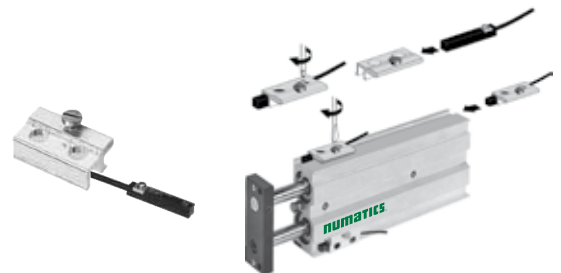
Ⓜ In order to fasten the detector on cylinder diameters 25 to 63 with its electrical outlet facing towards the cylinder **ends**, rotate the detector + collar **unit** by 180°.

ACTUATORS



series	page	Ø (mm)	code fastening kit ⁽¹⁾
447	P275	12 ... 32	P494A0029400A00

⁽¹⁾ Designed for "dove tail" grooves.



A - Lateral mounting of the detector

B - Upper mounting of the detector

(type ILS or MR)

- Detector, lead with stripped ends :
 - stroke ≤ 25 mm : a detector following (A) mounting and the other following (B) mounting
 - stroke > 25 mm : mounting of the 2 detectors following (A) and/or (B) mounting
- Detector with lead and connector: a detector following (A) mounting and the other following (B) mounting

