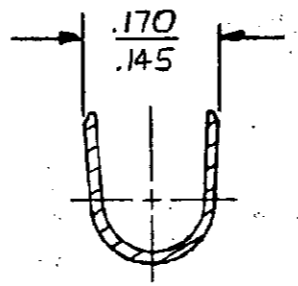
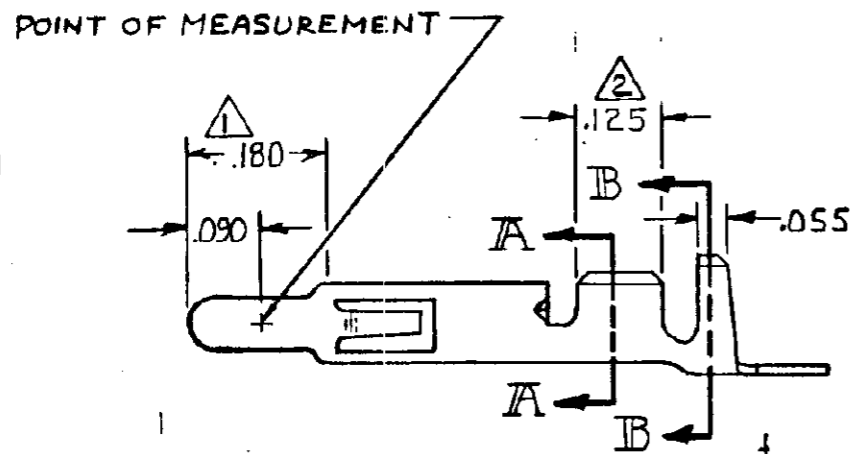
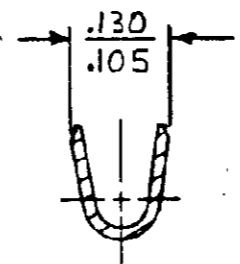
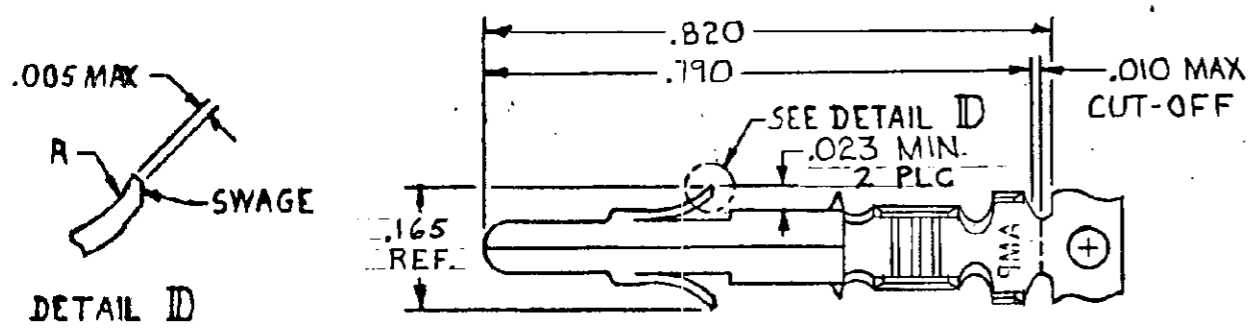


© COPYRIGHT 1972 BY AMP INCORPORATED, HARRISBURG, PA.
 ALL INTERNATIONAL RIGHTS RESERVED. AMP INCORPORATED PRODUCTS
 COVERED BY U. S. AND FOREIGN PATENTS AND/OR PATENTS PENDING.



REVISIONS						
P	F	ZONE	LTR	DESCRIPTION	DATE	APPROVED
/	/		N	REDRAWN W/O CHANGE	M-6457	6-5-81 MSF/DH.
/	/		P	REVISED	M-7350	7/25/83 DAS/DH.
/	/		R	REVISED	AG 57	10-20-85 SW/RS
/	/		R ₁	RESTORED		3/27/85 BKO/RS
/	/		S	REVISED PER CM-1728		9-6-88 PH/TB
/	/		T	OBSOLETE -5 PER CM 2309		5-3-89 TB/RS
/	/		U	REVISED PER CM-3286		2-7-91 PKC/RS
/	/		V	REV PER EC 0730-3607-91		1-6-94 RV/RS
/	/		W	REV PER EC 0730-0141-94		7-26-94 RV/RS
/	/		Y	OBS -8 PER EC 0730-0135-96		7-1996 JH/RS

- △ PLATED WITH .000030 GOLD, OVER .000050 NICKEL UNDERPLATE.
- △ PLATED INTERNALLY WITH .000030 GOLD.

350547-7	MINI	GOLD △	.012 BRASS	350218-7
350547-6			.012 PH. BRZ	350218-6
350547-3	MINI	PRE-TIN	.012 PH. BRZ	350218-3
350547-2		GOLD △△	.012 BRASS	350218-2
350547-1		PRE-TIN		350218-1

UNLESS OTHERWISE SPECIFIED DIMENSIONS ARE IN INCHES. TOLERANCES ON: DECIMALS ±.015 ANGLES ±	CONTRACT NO	AMP AMP INCORPORATED Harrisburg, Pa.		
DR M. FEHER 5-6-81	CHK D.S. Heide 6/9/81			
WIRE RANGE 20-14 AWG	APPD R. Pollock 6-10-81	SIZE B	CODE IDENT NO 00779	DRAWING NO 350218
INSULATION RANGE .130 DIA MAX	OTHER APPD	SCALE 4-1	SHEET	