

FEATURES

Designed for rivet and nut installation, these mandrels attach to a reversible drill for simple and easy setting

The tools set the rivet when turning clockwise, when set to reverse, the rivet mandrel can be expelled

Rivet capacity: 1/4-20

RS PRO Replacement Mandrels kit-M6

RS Stock No.: - 2605849



RS Professionally Approved Products bring to you professional quality parts across all product categories. Our product range has been tested by engineers and provides a comparable quality to the leading brands without paying a premium price.

Product Description

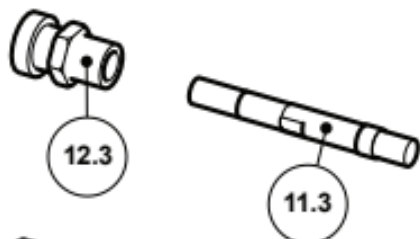
Replacement mandrels kits-M6
For 1/4-20

General Specifications

Material	Carbon steel
Length	23mm L
Finish	Matt black coating
Capacity for drill	1/4-20
Application	Reversible drill

Additional Information

Custom Tariff Number	82055980
-----------------------------	----------



Dimension Drawing, Detailed Image,...