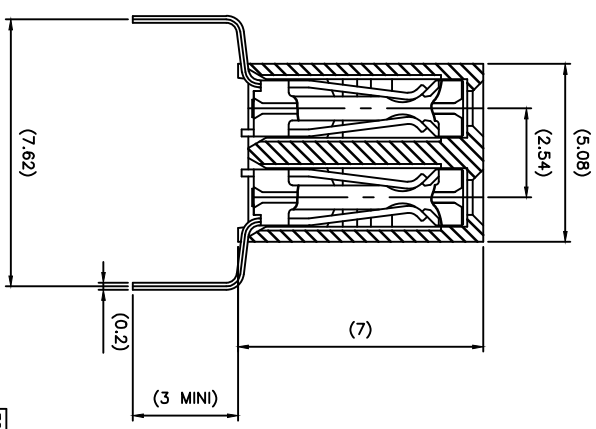
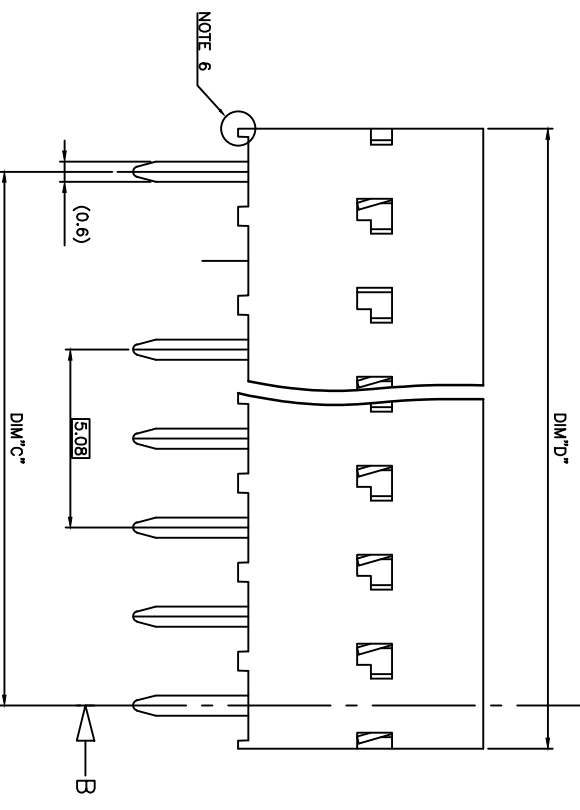
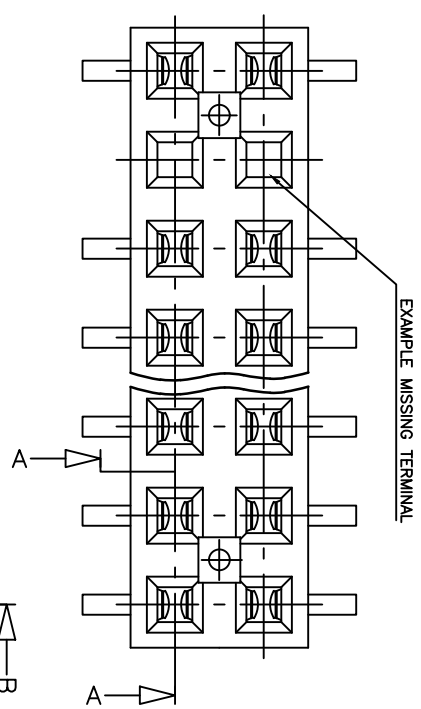


|                |                 |
|----------------|-----------------|
| PRODUCT NB     | DIM"C" & DIM"D" |
| 95264-1XX(H)LF | SEE SHEET 2/2   |

ROHS COMPATIBLE. SEE NOTE 5



NOTES:

- 1 - MATERIAL HOUSING: THERMOPLASTIC POLYESTER, 30% GLASS FILLED, COLOUR BLUE. FLAME RETARDANT PER UL-94 CATEGORY VO.
- 2 - MATERIAL TERMINAL: PHOSPHOR BRONZE EXTRA HARD.
- 3 - MATERIAL HOUSING VERSION HIGH TEMPERATURE: PCT 30% GLASS FILLED, COLOUR GREY. FLAME RETARDANT PER UL-94 CATEGORY VO.
- 4 - THE DASH "H" AT THE END OF THE P/N TO INDICATE A HIGH TEMPERATURE HOUSING.
- 5 - ROHS COMPATIBLE PRODUCT SPECIFICATIONS
  - a - PLATING:
    - "LF" MEANS THE PRODUCT IS LEAD-FREE, 2µm MINIMUM MATTE TIN OVER 1.27µm MINIMUM NICKEL UNDERPLATE.
  - b - MANUFACTURING PROCESS COMPATIBILITY
    - THE HOUSING WILL WITHSTAND EXPOSURE TO 260°C ±5°C SOLDER BATH TEMPERATURE FOR 5 SECONDS IN A WAVE SOLDER APPLICATION WITH A 1.6mm MIN THICK CIRCUIT BOARD.
- c - LABELING:
  - MEETS PACKAGING SPECS AS PER GS-14-920
- d - LEGAL STATEMENT: SEE GS-47-0004
- 6 - END STAND-OFFS FOR 2X2 UP TO 2X4 POS NO END STAND-OFFS FOR 2X5 UP TO 2X50 POS

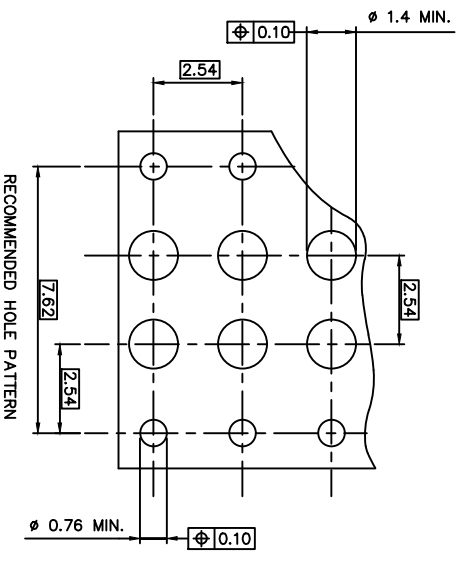
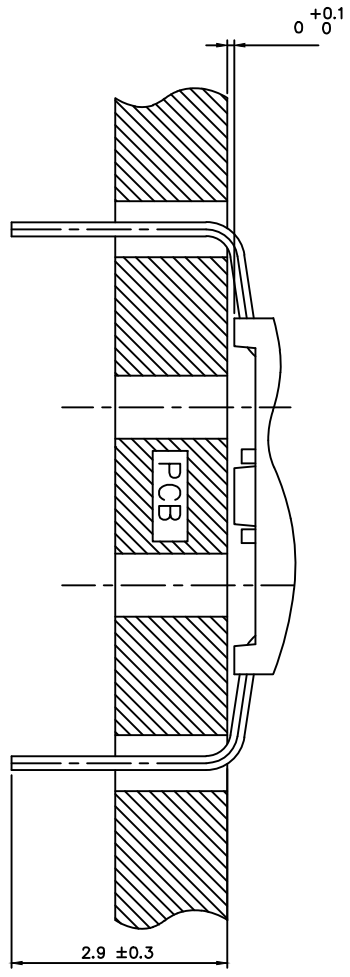
SECTION A-A

(SEE NOTE 4)

SECTION B-B

|                        |              |           |            |                |
|------------------------|--------------|-----------|------------|----------------|
| mat'l. code            | surface      | tolerance | projection | product family |
| SEE NOTES              | ISO 192      | ISO 456   | ISO 110    | DX VCC DR      |
| UTR. leg. no. dr. date | ISO 14.10.21 | ISO 50.3  | ISO 10:1   |                |
| R B-19124/14/14        | ISO 14.10.21 | ISO 50.3  | ISO 10:1   |                |
| S F-24429/16/16        | ISO 16.07.01 | ISO 50.3  | ISO 10:1   |                |
| L P06-0137/DAE         | ISO 06.02.27 | ISO 50.3  | ISO 10:1   |                |
| M P06-0204/DAE         | ISO 06.06.28 | ISO 50.3  | ISO 10:1   |                |
| N P06-0323/DAE         | ISO 06.11.21 | ISO 50.3  | ISO 10:1   |                |
| P F11-0044/051         | ISO 11.02.22 | ISO 50.3  | ISO 10:1   |                |
| sheet / revision       | S / J        | JMP       | 96.06.07   |                |
| index sheet            | 1 / 2        |           |            |                |

| PRODUCT N°     | NR of POS. | DIM"C" | DIM"D" | CONTACT PLACED IN CAVITY (SEE VIEW "A") |   |   |   |   |   |   |   |   |    |    |    |    |    |    |    |    |    |    |    |
|----------------|------------|--------|--------|---|---|---|---|---|---|---|---|---|----|----|----|----|----|----|----|----|----|----|----|
|                |            |        |        | 1                                       | 2 | 3 | 4 | 5 | 6 | 7 | 8 | 9 | 10 | 11 | 12 | 13 | 14 | 15 | 16 | 17 | 18 | 19 | 20 |
| 95264-Y01(H)LF | 2x10       | 22.86  | 25.32  | X                                       | X | X | X | X | X | X | X | X | X  | X  | X  | X  | X  | X  | X  | X  | X  |    |    |
| 95264-Y02(H)LF | 2x15       | 35.56  | 38.02  | X                                       | X | X | X | X | X | X | X | X | X  | X  | X  | X  | X  | X  | X  | X  | X  |    |    |
| 95264-Y03(H)LF | 2x11       | 35.56  | 38.02  | X                                       | X | X | X | X | X | X | X | X | X  | X  | X  | X  | X  | X  | X  | X  | X  |    |    |
| 95264-Y04(H)LF | 2x10       | 22.86  | 25.32  | X                                       | X | X | X | X | X | X | X | X | X  | X  | X  | X  | X  | X  | X  | X  | X  |    |    |
| 95264-Y05(H)LF | 2x4        | 7.62   | 10.08  | X                                       | X | X | X | X | X | X | X | X | X  | X  | X  | X  | X  | X  | X  | X  | X  |    |    |
| 95264-Y06(H)LF | 2x5        | 10.16  | 12.62  | X                                       | X | X | X | X | X | X | X | X | X  | X  | X  | X  | X  | X  | X  | X  | X  |    |    |
| 95264-Y07(H)LF | 2x3        | 5.08   | 7.54   | X                                       | X | X | X | X | X | X | X | X | X  | X  | X  | X  | X  | X  | X  | X  | X  |    |    |
| 95264-Y08(H)LF | 2x7        | 15.24  | 17.7   | X                                       | X | X | X | X | X | X | X | X | X  | X  | X  | X  | X  | X  | X  | X  | X  |    |    |
| 95264-Y09(H)LF | 2x14       | 33.02  | 35.48  | X                                       | X | X | X | X | X | X | X | X | X  | X  | X  | X  | X  | X  | X  | X  | X  |    |    |
| 95264-Y10(H)LF | 2x20       | 48.26  | 50.72  | X                                       | X | X | X | X | X | X | X | X | X  | X  | X  | X  | X  | X  | X  | X  | X  |    |    |



|                     |                                   |             |
|---------------------|-----------------------------------|-------------|
| 95264-6XX(H)LF      | 2µm Au MIN. OVER 1.3µm Ni MIN.    | Sn OVER Ni  |
| 95264-8XX(H)LF      | 0.4µm Au MIN. OVER 1.3µm Ni MIN.  | Sn OVER Ni  |
| 95264-4XX(H)LF      | 5µm Sn MIN. OVER 1.27µm Ni MIN.   | Sn OVER Ni  |
| 95264-3XX(H)LF      | 0.75µm Au MIN. OVER 1.3µm Ni MIN. | Sn OVER Ni  |
| PLATING CODE        | CONTACT AREA                      | SOLDER TAIL |
| PLATING EXPLANATION |                                   |             |

| mat'l. code                 | surface          | tolerance        | projection       | product family |
|-----------------------------|------------------|------------------|------------------|----------------|
| SEE NOTES                   | ISO 192          | ISO 406          | ISO 100          | DX VCC DR      |
| UTR. leg. no. dfr. date     | ISO 680          | ISO 680          | ISO 680          |                |
| H. Pos. - 0204 DAE 06.06.28 | ISO 680          | ISO 680          | ISO 680          |                |
| J. B-19124 LNU 14.10.21     | ISO 680          | ISO 680          | ISO 680          |                |
| D. F70629 PNY 07.09.25      | ISO 680          | ISO 680          | ISO 680          |                |
| E. F70629 VMO 06.10.14      | ISO 680          | ISO 680          | ISO 680          |                |
| F. F70161 DAE 02.02.23      | ISO 680          | ISO 680          | ISO 680          |                |
| G. Pca-034 DAE 04.11.15     | ISO 680          | ISO 680          | ISO 680          |                |
| sheet / revision            | sheet / revision | sheet / revision | sheet / revision |                |
| index / sheet               | index / sheet    | index / sheet    | index / sheet    |                |