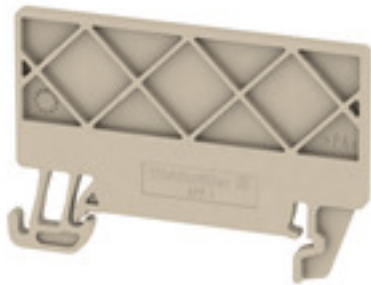


A-series APP 1

Weidmüller Interface GmbH & Co. KG
 Klingenbergstraße 26
 D-32758 Detmold
 Germany
 Fon: +49 5231 14-0
 Fax: +49 5231 14-292083
 www.weidmueller.com

Product image



Spring connection with PUSH IN Technology

The innovative PUSH IN technology reduces the amount of time you spend on wiring to a minimum. Direct insertion guarantees high conductor pull-out forces and simple handling for all conductor types.

General ordering data

Type	APP 1
Order No.	2488970000
Version	A-series, Separation plate
GTIN (EAN)	4050118499216
Qty.	50 Stück

A-series APP 1

Weidmüller Interface GmbH & Co. KG
 Klingenbergstraße 26
 D-32758 Detmold
 Germany
 Fon: +49 5231 14-0
 Fax: +49 5231 14-292083
 www.weidmueller.com

Technische Daten

Dimensions and weights

Width	2.5 mm	Width (inches)	0.098 inch
Height	52.67 mm	Height (inches)	2.074 inch
Depth	36.15 mm	Depth (inches)	1.423 inch
Net weight	2.447 g		

Temperatures

Storage temperature, max.	40 °C	Storage temperature, min.	10 °C
Storage temperature	10 °C...40 °C	Continuous operating temp., min.	-60 °C
Continuous operating temp., max.	130 °C		

Material data

Material	Wemid	Colour	dark beige
UL 94 flammability rating	V-0		

Classifications

ETIM 6.0	EC000886	ETIM 7.0	EC000886
eClass 9.0	27-14-11-92	eClass 9.1	27-14-11-33
eClass 10.0	27-14-11-92		

Approvals

ROHS	Conform
------	---------

Downloads

Engineering Data	EPLAN
Engineering Data	STEP
User Documentation	Additional Note DE Additional Note EN StorageConditionsTerminalBlocks

**A-series
APP 1**

Weidmüller Interface GmbH & Co. KG
Klingenbergstraße 26
D-32758 Detmold
Germany
Fon: +49 5231 14-0
Fax: +49 5231 14-292083
www.weidmueller.com

