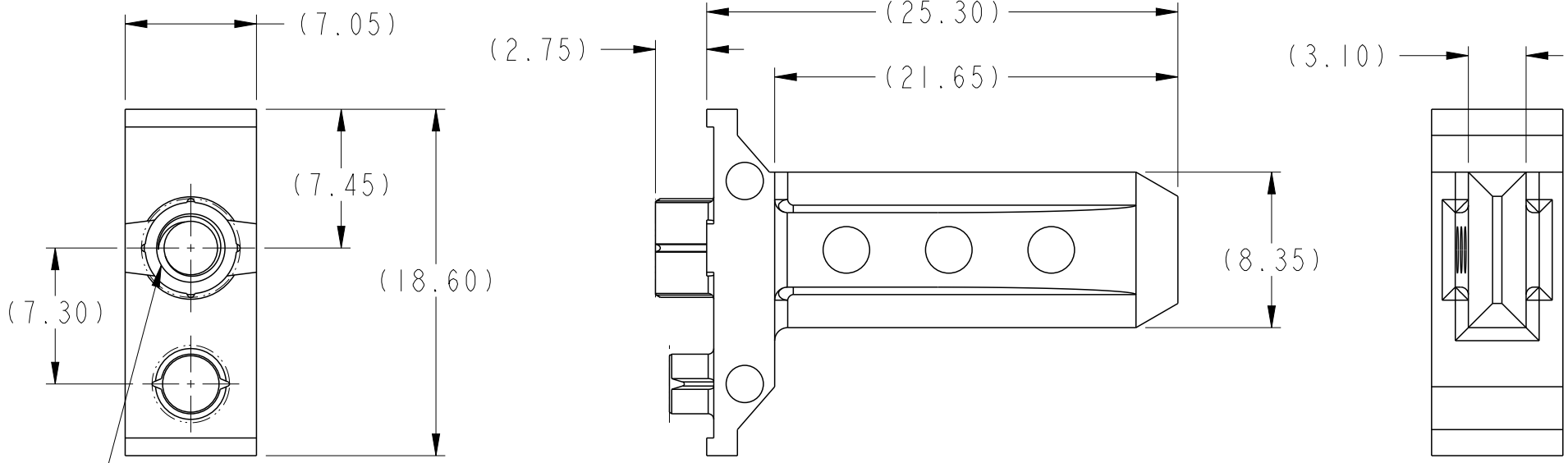


PRODUCT NUMBER
10066832-101LF



M3.5 X 0.6-6H
THREAD DEPTH 5.00mm MINIMUM

spec ref		dr Chen-Hong Tan		2006/05/02		projection 	MM ←→	size	A4	scale	2:1	
tolerance std		eng Terry Luo		2019/04/24				ecn no	ELX-DG-33324-1			
ASME Y14.5		chr -		-				rel level	Released			
-		appr Heaven Cen		2019/04/25		product family		AirMax Accessories		rev		
surface 3.2 ASME Y14.5	linear	0.X	±0.3	Amphenol FCi	title			dwg no	10066832		rev	
		0.XX	±0.10		7.2mm GUIDE PIN							
		0.XXX	±0.050		25.3mm LONG, W/ INTERNAL THREAD							
angular	0°	±2°	cat. no.	-	Product - Customer Drw			sheet 1 of 2				

Creo Title - REV E - 2016-02-12

A

B

C

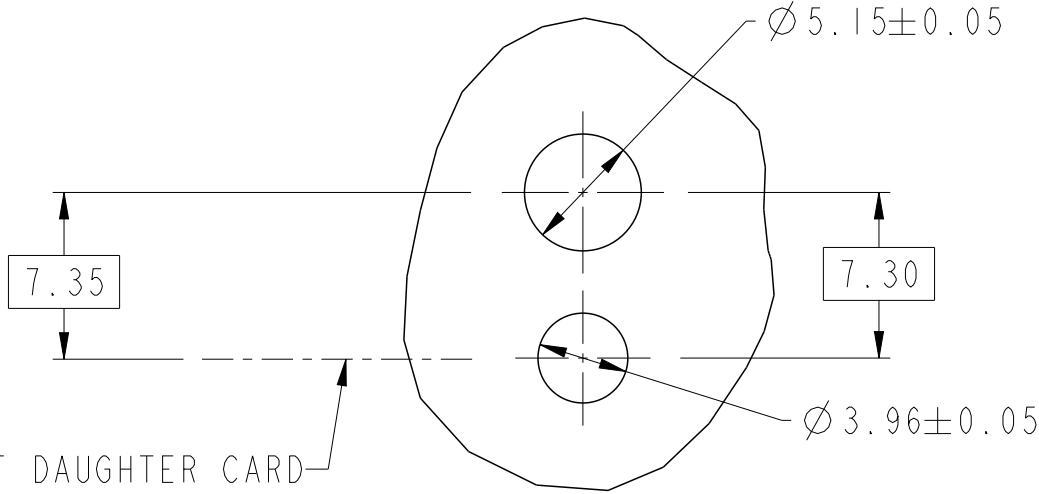
D

A

B

C

D



TOP OF DAUGHTER CARD

SEE NOTE 3 & 4
SCALE 3:1

1. MATERIAL: ZINC ALLOY.
2. FINISH: ZINC YELLOW CHROMATE.
- ③ APPLICATION SPECIFICATION: GS-20-045
- ④ REFER TO CUSTOMER DRAWING 10035911 FOR INFORMATION REGARDING PCB LAYOUT OF POWER AND GUIDE MODULES RELATIVE TO SIGNAL MODULES.
5. THIS PRODUCT MEETS EUROPEAN UNION DIRECTIVES AND OTHER COUNTRY REGULATIONS AS DESCRIBED IN GS-22-008
6. PACKAGING MEETS GS-14-920 LEAD FREE LABELING SPECIFICATION.

spec ref		dr	Chen-Hong Tan	2006/05/02	projection 	MM 	size	A4	scale	3:10	
tolerance std ASME Y14.5	TOLERANCES UNLESS OTHERWISE SPECIFIED	eng	Terry Luo	2019/04/24			ecn no	ELX-DG-33324-1			
		chr	-	-				rel level	Released		
surface	3.200 linear	appr	Heaven Cen	2019/04/25	product family	AirMax VS					
ASME Y14.5	angular	0°	±2°	Amphenol FCi	title	7.2mm GUIDE PIN		dwg no	10066832	rev	C
						25.3mm LONG, W/ INTERNAL THREAD					
					cat. no.	-	Product - Customer Drw	sheet 2 of 2			