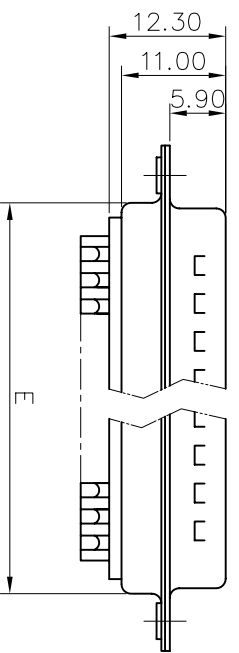
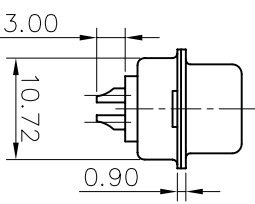
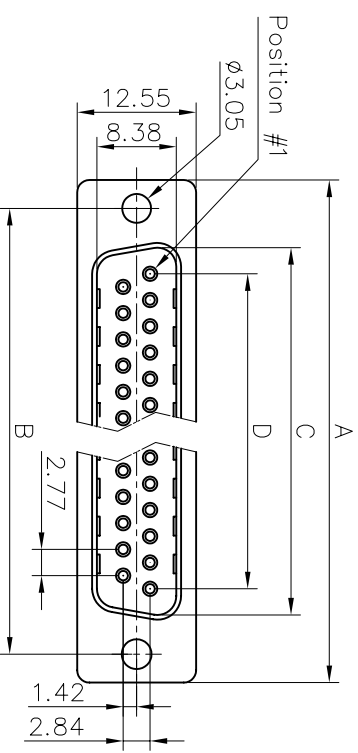


This document is the property of Amphenol Corporation and is addressed to the recipient in confidence. It is not to be reproduced, stored in a retrieval system, or transmitted in any form or by any means, electronic, mechanical, photocopying, recording, or by any information storage and retrieval system, without the prior consent, in writing, of Amphenol Corporation. If you are not the intended recipient, you should not disseminate or to use any information in this document.



Customer drawing

Nb OF CONTACTS	Dimension				
	A	B	C	D	E
9	30.84	24.99	16.92	11.09	19.28
15	39.24	33.32	24.70	19.39	27.51
25	53.04	47.04	38.96	33.24	41.30
37	69.32	63.50	55.42	49.86	57.71

REVISIONS			
SM	EON	DESCRIPTION	DATE
1		New release	03/20/08
2		add more information	05/04/09
3		contact resistance 10mohms	05/25/09

D-SUB TECHNICAL DATA

SHELL : Steel 100u"min tin over 50u" min nickel
BODY : Glass filled thermoplastic.
 Flame retardant to UL94 V-0 Color Black

CONTACTS : Brass
 30u" min. gold over 50u" min nickel on mating area.
 100u" min tin over 50u" min nickel on solder area

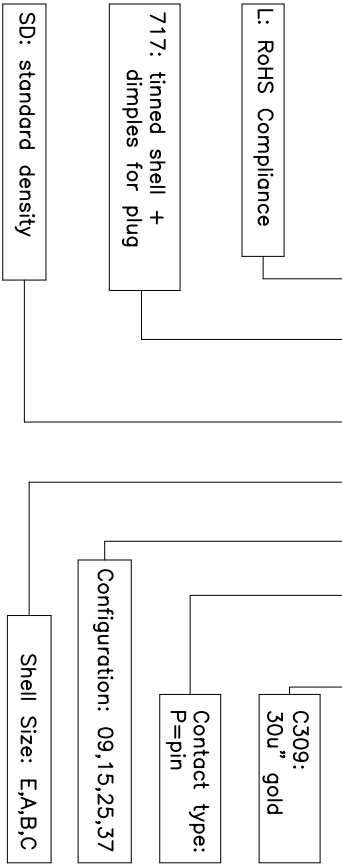
ELECTRICAL: Voltage rating : 250 V Rms to 50 Hz
 Current rating : 5A
 Withstanding Voltage >1100 V Rms to 50 Hz for one minute
 Insulation resistance >5000 M Ohms
 Contact resistance 10 mOhms max.
CLIMATIC : Temperature range -55 °C up to 125°C

MARKING : Amphenol...(Series No.)
 Commercial reference
 Manufacturing date

*** marking " Amphenol" and "Product code" will be marked on both sides of front shell if no space.

PRODUCT CODE

L 717 SD X XX P C309



UNLESS OTHERWISE SPECIFIED		APPROVAL		DATE	
TOLERANCES	AS SHOWN	DRAWN	Checked	03/20/08	03/20/08
DIMS.	FRACTIONAL	DECIMAL	1/16" using	03/20/08	03/20/08
ANGLES	±	ANGLES	±		
FOR MATERIALS AND FINISHES	SEE NOTES	DRAWING FILE :			
REMOVE SHARP EDGES		ANGLE OF PROJECTION			
DIMENSIONS	INCHES	SIZE DRAWING NO.			
THICKNES	MM	C L717SDXXXPC309			
SCALE	NONE	REV. 3			
		SHEET 1 OF 1			

Amphenol [®]

Stamped and Formed contacts, SD series