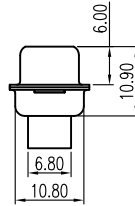
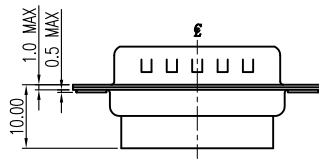
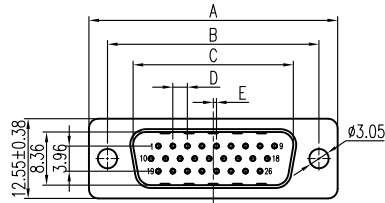


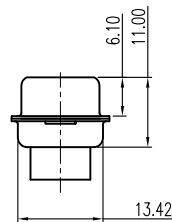
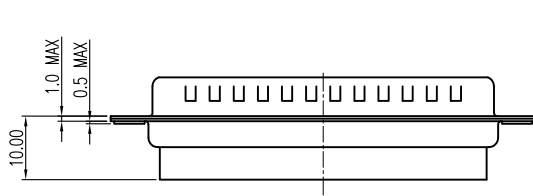
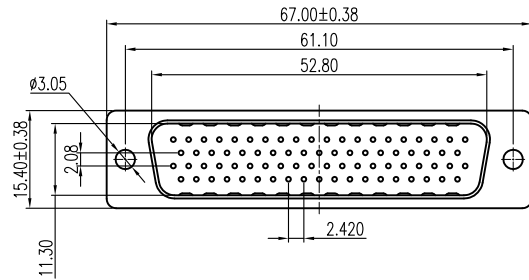
This document is the property of Amphenol Corporation and is delivered on the express condition that it is not to be disclosed, reproduced or used, in whole or in part, for manufacture or sale by anyone other than Amphenol Corporation without its prior consent, & that no right is granted to disclose or to use any information in this document.

Customer drawing



Dimensions

Positions	A±0.38	B	C	D	E
15	30.81	24.99	16.92	2.29	0.25
26	39.19	33.32	25.25	2.29	0.51
44	53.04	47.04	38.96	2.29	0.51
62	69.32	63.50	55.42	2.41	0.58



78 Position



REVISIONS				
SYM	ECN	DESCRIPTION	DATE	APPROVED
1	HK--	First Release Drawing	03/25/14	IP
2	HK--	Update the Drawing	10/30/14	IP

D-SUB TECHNICAL DATA

SHELL : SPCC, 100u" Tin over 50u" min nickel over 50u" min Copper

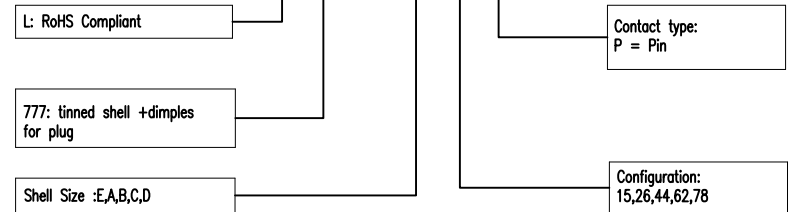
BODY: PBT, UL 94V-0, Color:Black.

ELECTRICAL : Withstanding Voltage >1000 V RMS
Insulation resistance >1000 M Ohms

MARKING : Amphenol...(Series No.)
Commercial reference
Manufacturing date

PRODUCT CODE

L 777 HR X XX P



UNLESS OTHERWISE SPECIFIED TOLERANCES	APPROVAL		DATE
	U.S.	METRIC	
.X +/-	0.50		10/30/14
.XX +/-	0.30		10/30/14
.XXX +/-	0.20		
FRACTIONS +/-			
ANGLES +/-	5°		
FOR MATERIALS AND FINISHES SEE NOTES	DRAWING FILE :		
REMOVE SHARP EDGES	ANGLE OF PROJECTION		
DIMENSIONS			
U.S. INCHES			
METRIC MM			

Amphenol		
Amphenol East Asia Limited		
TITLE D-sub crimping type,HR series		
SIZE A4	DRAWING NO. L777HRXXXP	REV. 2
SCALE NONE	SHEET 1 OF 1	