



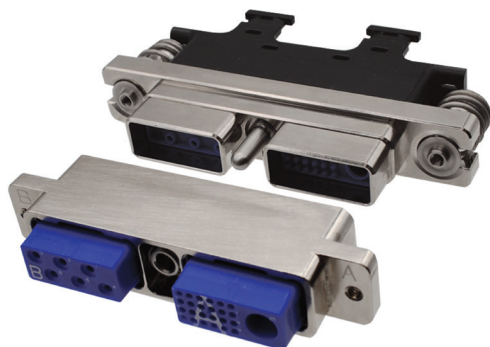
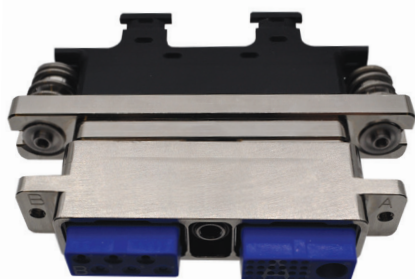
# Galley Connectors

ARINC 810

## Modular Connector for Commercial Aerospace

The C-ENX™ series offers a wide range of solutions based on combining a large variety of shells, inserts and contacts. The series is standardized with the specifications found in EN4644.

Designed for commercial aerospace cabin interiors, the C-ENX™ Galley Connectors include floating mounting hardware for blind mating and guaranteeing a fully sealed connection and avoids improper mating. The Galley Connector inserts accommodate 6 power contacts, 24 signal contacts and can include a Twinax connector for CAN data bus connectors. The ARINC 810 standard is an agreed upon specification adopted by operators and manufacturers of microwave ovens, refrigerators, chillers, trash compactors and other equipment utilized in commercial aerospace galleys.



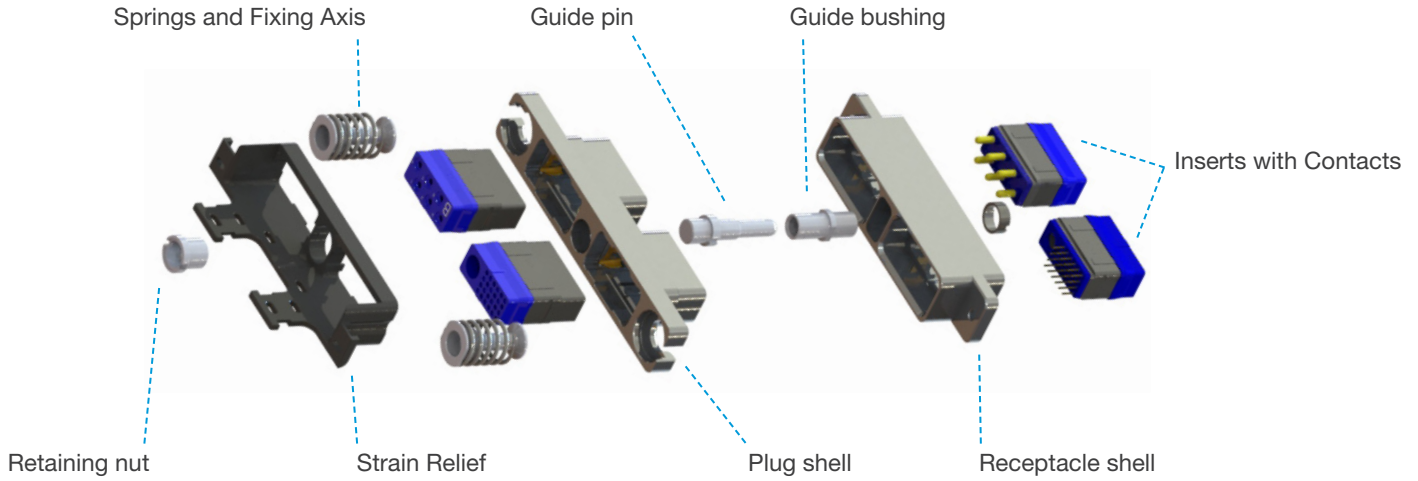
## C-ENX™ Galley Connector Features

- Spring floating mounting hardware for compensating misalignment of equipment to cabinet
- Guide pin and socket centered in connectors to position blind mates
- Nickel plated shells to protection against corrosion
- Aluminum shells to reduce weight while providing mechanical protection
- Modular inserts to reduce manufacturing and operating costs
- Standardized contacts to improve availability
- Interchangeable and intermateable parts
- Stackable shells do not require additional space for locking and unlocking connectors

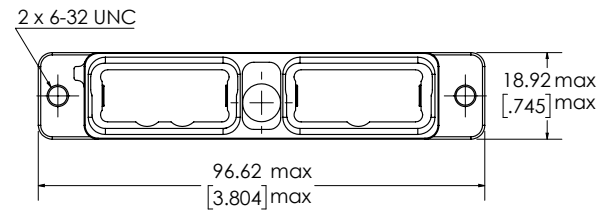
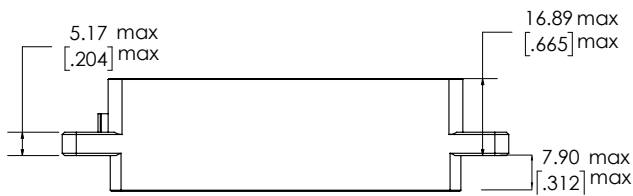
## C-ENX™ Product Family Features

- Low weight connector with high density contact arrangements
- Modular inserts can be easily replaced and wire separated
- Wide range of inserts for variety of connector sizes and types
- Common panel cut-out to simplify connector layout and construction
- Standard mil-spec tools for contact crimping and contact insertion/extraction
- Field replaceable sub-assemblies

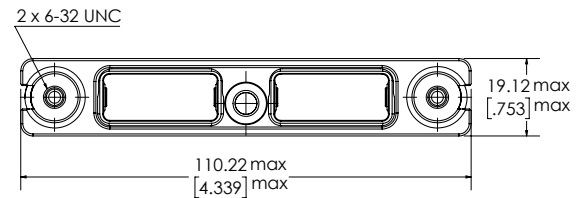
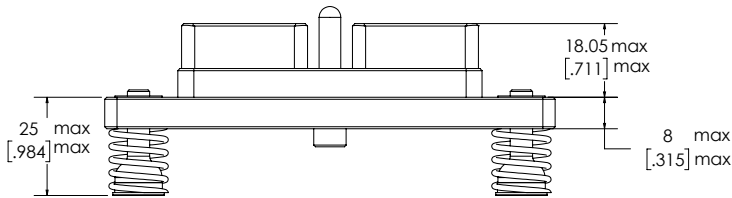
# Specifications and Drawings



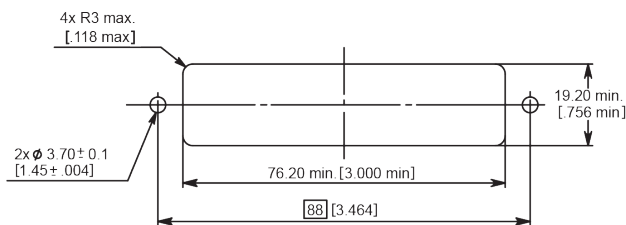
## Receptacle - Front Mount



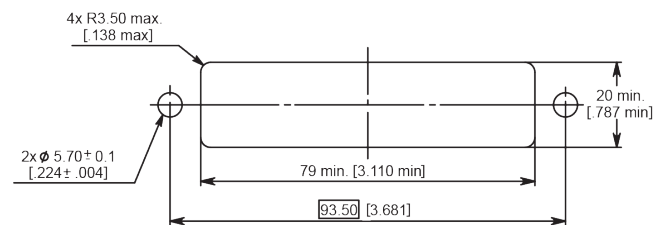
## Plug - Rear Mount



## Receptacle - Panel Cut-Out Front Mount



## Plug - Panel Cut-Out Rear Mount Plug



# How to Order



## Assembly Kits

Part Number	Description
C-617610188 or C-617610558	Receptacle assembled kit*
C-617610189	Plug assembled kit*

\*Part numbers for assembly kits include: plug or receptacle shell, inserts, contacts, sealing plugs and dust caps  
Each item included in the kit is indicated in the table below and can also be ordered separately.

## Receptacle Assembly Kits

C-617610188			C-617610558		
Part Number	Description	Qty per Kit	Part Number	Description	Qty per Kit
Shell with 2 Self-locking Threaded Holes			Shell with 2 Thru Holes		
C-617610212	Receptacle shell	1	C-617610419	Receptacle shell	1
C-ENXBE25Q1PA	Insert for cavity A	1	C-ENXBE25Q1PA	Insert for cavity A	1
C-ENXBE06PB	Insert for cavity B	1	C-ENXBE06PB	Insert for cavity B	1
C-617200	Pin crimp contacts/Size 22	15	C-617200	Pin crimp contacts/Size 22	15
C-617250	Pin crimp contacts/Size 12	6	C-617250	Pin crimp contacts/Size 12	6
C-616910	Filler plug	9	C-616910	Filler plug	9
C-617954003	Dust cap	2	C-617954003	Dust cap	2

## Plug Assembly Kit

C-617610189		
Part Number	Description	Qty per Kit
C-617610213	Plug shell	1
C-ENXBE25Q1SA	Insert for cavity A	1
C-ENXBE06SB	Insert for cavity B	1
C-617300	Socket crimp contacts/Size 22	15
C-617350	Socket crimp contacts/Size 12	6
C-616910	Filler plug	9
C-617922007	Strain relief	1
C-617954002	Dust cap	2

## Can Data Bus Contact

Part Number	Description
C-617165011	Size 8 Twinax pin contact
C-617065011	Size 8 Twinax socket contact



Asia Pacific  
+86 21 5442 7668  
ccs.asia.sales@as.cinch.com

Europe, Middle East & Africa  
+44 (0) 1245 342060  
CinchConnectivity@eu.cinch.com

North America  
+1 630 705 6000  
inquiry@us.cinch.com

[belfuse.com/cinch](http://belfuse.com/cinch)

# Mouser Electronics

Authorized Distributor

Click to View Pricing, Inventory, Delivery & Lifecycle Information:

## Cinch Connectivity Solutions:

[C-616910](#) [C-617065011](#) [C-617165011](#) [C-617200](#) [C-617250](#) [C-617610419](#) [C-617610558](#) [C-617922007](#) [C-617954002](#) [C-617954003](#) [C-617300](#) [C-617350](#) [C-617610188](#) [C-617610189](#) [C-617610212](#)