



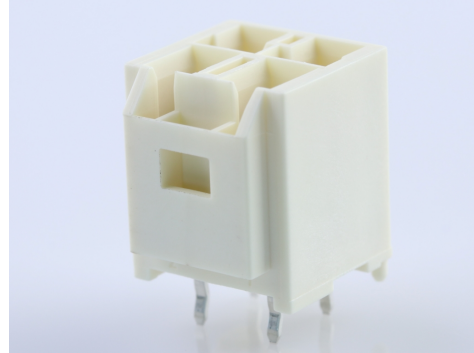
Part Number : [1510481411](#)

Product Description : CP-6.5 Header, 6.50mm Pitch, Dual Row, Vertical, Polarized, Positive Lock, Tray Packaging, Glow-Wire Capable, 4 Circuits, Natural (White)

Series Number : 151048

Status : Active

Product Category : PCB Headers and Receptacles



Documents & Resources

Drawings

[Drawing 1510481411_sd.pdf](#)

[Packaging Design Drawing PK-151048-0002-001.pdf](#)

3D Models and Design Files

[3D Model PDF 1510481411.pdf](#)

[3D Model 1510481411_stp.zip](#)

[Symbol Footprint Data SYM-151048-1401-001.zip](#)

Specifications

[Product Specification PS-151048-0001-001.pdf](#)

[Test Summary 1510480001-TS-000.pdf](#)

Product Environment Compliance

Compliance

GADSL/IMDS	Not Relevant
China RoHS	
EU ELV	Not Relevant
Low-Halogen Status	Not Low-Halogen per IEC 61249-2-21
REACH SVHC	Not Contained per D(2023)3788-DC (14 Jun 2023)
EU RoHS	Compliant per EU 2015/863

Multiple Part Product Compliance Statements

- Eu RoHS
- REACH SVHC

- Low-Halogen

Multiple Part Industry Compliance Documents

- IPC 1752A Class C
- IPC 1752A Class D
- Molex Product Compliance Declaration
- IEC-62474
- chemSHERPA (xml)

EU RoHS Certificate of Compliance

Part Details

General

Status	Active
Category	PCB Headers and Receptacles
Series	151048
Description	CP-6.5 Header, 6.50mm Pitch, Dual Row, Vertical, Polarized, Positive Lock, Tray Packaging, Glow-Wire Capable, 4 Circuits, Natural (White)
Application	Power, Wire-to-Board
Comments	See Product Specification for maximum current rating by circuit size and wire AWG
Component Type	PCB Header
Product Family	CP Wire-to-Board and Wire-to-Wire Connector Systems
Product Name	CP-6.5
UPC	889056066839

Agency

CSA	LR19980
UL	E29179

Electrical

Current - Maximum per Contact	10.0A
Voltage - Maximum	600V AC (RMS)/DC

Physical

Breakaway	No
-----------	----

Circuits (Loaded)	4
Circuits (maximum)	4
Color - Resin	Natural (White)
Durability (mating cycles max)	30
First Mate / Last Break	No
Flammability	94V-0
Glow-Wire Capable	Yes
Guide to Mating Part	No
Keying to Mating Part	Yes
Lock to Mating Part	Yes
Material - Metal	Copper Alloy
Material - Plating Mating	Matte Tin
Material - Plating Termination	Matte Tin
Material - Resin	Polyamide
Net Weight	2.884/g
Number of Rows	2
Orientation	Vertical
Packaging Type	Tray
PC Tail Length	3.80mm
PCB Locator	Yes
PCB Retention	Yes
PCB Thickness - Recommended	1.60mm
Pitch - Mating Interface	6.50mm
Plating min - Mating	1.270µm
Plating min - Termination	1.270µm
Polarized to Mating Part	Yes
Polarized to PCB	Yes
Temperature Range - Operating	-40° to +105°C
Termination Interface Style	Through Hole

Solder Process Data

Lead-Free Process Capability	WAVE
------------------------------	------

Mates With / Use With

Mates with Part(s)

Description	Part Number
CP-6.5 Receptacle Housing, 6.50mm Pitch, Dual Row, Polarized, Positive Lock, 4 Circuits, Natural (White)	<u>1510492411</u>
CP-6.5 Receptacle Housing, Glow-Wire Capable, 6.50mm Pitch, Dual Row, 4 Circuits, Natural	<u>1512072411</u>

This document was generated on Sep 04, 2023