

UK 10-DREHSI (6,3X32) - Fuse modular terminal block



3005507

<https://www.phoenixcontact.com/us/products/3005507>

Please be informed that the data shown in this PDF document is generated from our online catalog. Please find the complete data in the user documentation. Our general terms of use for downloads are valid.



Fuse modular terminal block, fuse type: Glass / ceramics / ..., fuse type: G / 6,3 x 32, nom. voltage: 400 V, nominal current: 10 A, connection method: Screw connection, Rated cross section: 1.5 mm², cross section: 0.5 mm²- 16 mm², mounting type: NS 35/7,5, NS 35/15, NS 32, color: black

Your advantages

- Can be bridged with FBI ... fixed bridge

Commercial data

| | |
|--------------------------------------|---------------------|
| Item number | 3005507 |
| Packing unit | 1 pc |
| Minimum order quantity | 1 pc |
| Sales key | BE12 |
| Product key | BE1235 |
| Catalog page | Page 497 (C-1-2019) |
| GTIN | 4017918091170 |
| Weight per piece (including packing) | 34.57 g |
| Weight per piece (excluding packing) | 34.57 g |
| Customs tariff number | 85369095 |
| Country of origin | PL |

Technical data

Product properties

| | |
|-----------------------|---------------------|
| Product type | Fuse terminal block |
| Number of connections | 2 |
| Number of rows | 1 |
| Potentials | 1 |

Insulation characteristics

| | |
|----------------------|-----|
| Overvoltage category | III |
| Degree of pollution | 3 |

Electrical properties

| | |
|---|--|
| Fuse type | Glass / ceramics / ... |
| Rated surge voltage | 4 kV |
| Maximum power dissipation for nominal condition | 2.43 W |
| Fuse | G / 6,3 x 32 |
| Maximum power dissipation | max. 2.5 W (with single arrangement of the fuse terminal block in the event of overload) |
| | max. 2.5 W (With interconnected arrangement of several fuse terminal blocks in the event of overload) |
| | max. 4 W (with single arrangement of the fuse terminal block in the event of a short-circuit) |
| | max. 2.5 W (With interconnected arrangement of several fuse terminal blocks in the event of a short-circuit) |

Connection data

| | |
|---------------------------------|--------------------|
| Number of connections per level | 2 |
| Nominal cross section | 16 mm ² |

Level 1 above 1 below 1

| | |
|---|--|
| Screw thread | M4 |
| Tightening torque | 1.5 ... 1.8 Nm |
| Stripping length | 11 mm |
| Internal cylindrical gage | B6 |
| Connection in acc. with standard | IEC 60947-7-3 |
| Conductor cross section rigid | 0.5 mm ² ... 16 mm ² |
| Cross section AWG | 20 ... 6 (converted acc. to IEC) |
| Conductor cross section flexible | 0.5 mm ² ... 16 mm ² |
| Conductor cross section, flexible [AWG] | 20 ... 6 (converted acc. to IEC) |
| Conductor cross-section flexible (ferrule without plastic sleeve) | 0.5 mm ² ... 10 mm ² |
| Flexible conductor cross section (ferrule with plastic sleeve) | 0.5 mm ² ... 10 mm ² |
| Cross-section with insertion bridge, rigid | 10 mm ² |
| Cross-section with insertion bridge, flexible | 10 mm ² |
| 2 conductors with same cross section, solid | 0.5 mm ² ... 4 mm ² |

UK 10-DREHSI (6,3X32) - Fuse modular terminal block



3005507

<https://www.phoenixcontact.com/us/products/3005507>

| | |
|---|---|
| 2 conductors with same cross section, flexible | 0.5 mm ² ... 4 mm ² |
| 2 conductors with same cross section, flexible, with ferrule without plastic sleeve | 0.5 mm ² ... 4 mm ² |
| 2 conductors with the same cross section, flexible, with TWIN ferrule with plastic sleeve | 0.5 mm ² ... 10 mm ² |
| Nominal current | 10 A |
| Maximum load current | 10 A |
| Nominal voltage | 400 V 800 V (As a disconnect terminal block) |
| Nominal cross section | 1.5 mm ² |

Dimensions

| | |
|--------------------|---------|
| Width | 12 mm |
| Height | 62 mm |
| Depth on NS 32 | 62.2 mm |
| Depth on NS 35/7,5 | 57.2 mm |
| Depth on NS 35/15 | 64.7 mm |

Material specifications

| | |
|---|-------------|
| Color | black |
| Flammability rating according to UL 94 | V2 |
| Insulating material group | I |
| Insulating material | PA |
| Static insulating material application in cold | -60 °C |
| Temperature index of insulation material (DIN EN 60216-1 (VDE 0304-21)) | 130 °C |
| Relative insulation material temperature index (Elec., UL 746 B) | 130 °C |
| Fire protection for rail vehicles (DIN EN 45545-2) R22 | HL 1 - HL 3 |
| Fire protection for rail vehicles (DIN EN 45545-2) R23 | HL 1 - HL 3 |
| Fire protection for rail vehicles (DIN EN 45545-2) R24 | HL 1 - HL 3 |
| Fire protection for rail vehicles (DIN EN 45545-2) R26 | HL 1 - HL 3 |
| Calorimetric heat release NFPA 130 (ASTM E 1354) | 28 MJ/kg |
| Surface flammability NFPA 130 (ASTM E 162) | passed |
| Specific optical density of smoke NFPA 130 (ASTM E 662) | passed |
| Smoke gas toxicity NFPA 130 (SMP 800C) | passed |

Mechanical properties

Mechanical data

| | |
|-----------------|----|
| Open side panel | No |
|-----------------|----|

Environmental and real-life conditions

Ambient conditions

| | |
|---------------------------------|---|
| Ambient temperature (operation) | -60 °C ... 105 °C (max. short-term operating temperature RTI Elec.) |
|---------------------------------|---|

UK 10-DREHSI (6,3X32) - Fuse modular terminal block



3005507

<https://www.phoenixcontact.com/us/products/3005507>

| | |
|--|---|
| Ambient temperature (storage/transport) | -25 °C ... 60 °C (for a short time, not exceeding 24 h, -60 °C to +70 °C) |
| Ambient temperature (assembly) | -5 °C ... 70 °C |
| Ambient temperature (actuation) | -5 °C ... 70 °C |
| Permissible humidity (storage/transport) | 30 % ... 70 % |

Standards and regulations

| | |
|----------------------------------|---------------|
| Connection in acc. with standard | IEC 60947-7-3 |
|----------------------------------|---------------|

Mounting

| | |
|---------------|-----------|
| Mounting type | NS 35/7,5 |
| | NS 35/15 |
| | NS 32 |

UK 10-DREHSI (6,3X32) - Fuse modular terminal block

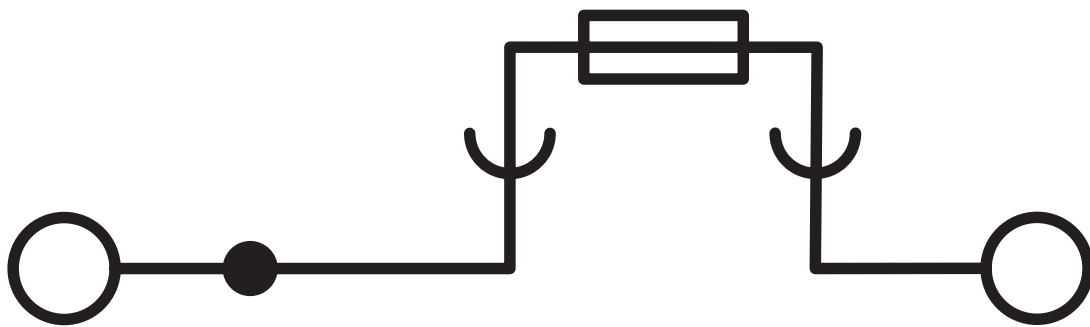


3005507

<https://www.phoenixcontact.com/us/products/3005507>

Drawings

Circuit diagram



UK 10-DREHSI (6,3X32) - Fuse modular terminal block





3005507


<https://www.phoenixcontact.com/us/products/3005507>

Approvals


To download certificates, visit the product detail page: <https://www.phoenixcontact.com/us/products/3005507>

|  CSA Approval ID: 13631 | | | | |
|--|-----------------------|-----------------------|-------------------|----------------------|
| | Nominal voltage U_N | Nominal current I_N | Cross section AWG | Cross section mm^2 |
| Use group B | 300 V | 20 A | 22 - 6 | - |
| Use group C | 300 V | 20 A | 22 - 6 | - |

|  IECEE CB Scheme Approval ID: NL-56826/A1 | | | | |
|--|-----------------------|-----------------------|-------------------|----------------------|
| | Nominal voltage U_N | Nominal current I_N | Cross section AWG | Cross section mm^2 |
| | 800 V | - | - | 0.5 - 16 |

|  EAC Approval ID: RU C-DE.BL08.B.00534 | | | | |
|---|--|--|--|--|
|---|--|--|--|--|

|  KEMA-KEUR Approval ID: 71-119846 | | | | |
|--|-----------------------|-----------------------|-------------------|----------------------|
| | Nominal voltage U_N | Nominal current I_N | Cross section AWG | Cross section mm^2 |
| | - | 10 A | - | 0.5 - 16 |

|  cULus Recognized Approval ID: E60425 | | | | |
|--|-----------------------|-----------------------|-------------------|----------------------|
| | Nominal voltage U_N | Nominal current I_N | Cross section AWG | Cross section mm^2 |
| Use group B | 300 V | 20 A | 24 - 6 | - |
| Use group C | 300 V | 20 A | 24 - 6 | - |
| Use group F | 500 V | 20 A | 24 - 6 | - |

UK 10-DREHSI (6,3X32) - Fuse modular terminal block



3005507

<https://www.phoenixcontact.com/us/products/3005507>

Classifications

ECLASS

| | |
|-------------|----------|
| ECLASS-11.0 | 27141116 |
| ECLASS-12.0 | 27141116 |
| ECLASS-13.0 | 27250113 |

ETIM

| | |
|----------|----------|
| ETIM 8.0 | EC000899 |
|----------|----------|

UNSPSC

| | |
|-------------|----------|
| UNSPSC 21.0 | 39121400 |
|-------------|----------|

UK 10-DREHSI (6,3X32) - Fuse modular terminal block



3005507

<https://www.phoenixcontact.com/us/products/3005507>

Environmental product compliance

| | |
|------------|--|
| China RoHS | Environmentally Friendly Use Period = 50 years |
| | For information on hazardous substances, refer to the manufacturer's declaration available under "Downloads" |

UK 10-DREHSI (6,3X32) - Fuse modular terminal block



3005507

<https://www.phoenixcontact.com/us/products/3005507>

Accessories

i Note: Applying some accessories below might limit this product.

FBI 10-12 - Fixed bridge

0203454

<https://www.phoenixcontact.com/us/products/0203454>



Fixed bridge, pitch: 12 mm, number of positions: 10, length: 8 mm, color: silver

i Max. current carrying capacity: 63 A

FBI 2-12 - Fixed bridge

0200075

<https://www.phoenixcontact.com/us/products/0200075>



Fixed bridge, pitch: 12 mm, number of positions: 2, length: 8 mm, color: silver

UK 10-DREHSI (6,3X32) - Fuse modular terminal block



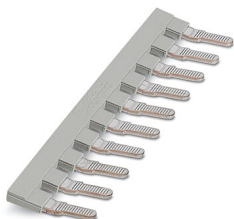
3005507

<https://www.phoenixcontact.com/us/products/3005507>

EB 10-12 - Insertion bridge

3006137

<https://www.phoenixcontact.com/us/products/3006137>



Insertion bridge, pitch: 12 mm, number of positions: 10, color: gray

 Max. current carrying capacity: 63 A

SZS 1,0X4,0 VDE - Screwdriver

1205066

<https://www.phoenixcontact.com/us/products/1205066>



Screwdriver, slot-headed, VDE insulated, size: 1.0 x 4.0 x 100 mm, 2-component grip, with non-slip grip

UK 10-DREHSI (6,3X32) - Fuse modular terminal block



3005507

<https://www.phoenixcontact.com/us/products/3005507>

NS 32 PERF 2000MM-VPE 10 - DIN rail perforated

1201002

<https://www.phoenixcontact.com/us/products/1201002>



DIN rail perforated, acc. to EN 60715, material: Steel, galvanized, passivated with a thick layer, G profile, color: silver, Pack of 10 (20 m)

NS 32 UNPERF 2000MM-VPE 10 - DIN rail, unperforated

1201015

<https://www.phoenixcontact.com/us/products/1201015>



DIN rail, unperforated, acc. to EN 60715, material: Steel, galvanized, passivated with a thick layer, G profile, color: silver, Pack of 10 (20 m)

UK 10-DREHSI (6,3X32) - Fuse modular terminal block



3005507

<https://www.phoenixcontact.com/us/products/3005507>

NS 35/ 7,5 PERF 2000MM - DIN rail perforated

0801733

<https://www.phoenixcontact.com/us/products/0801733>



DIN rail perforated, acc. to EN 60715, material: Steel, galvanized, passivated with a thick layer, Standard profile, color: silver, Pack of 25 (50 m)

NS 35/ 7,5 UNPERF 2000MM - DIN rail, unperforated

0801681

<https://www.phoenixcontact.com/us/products/0801681>



DIN rail, unperforated, acc. to EN 60715, material: Steel, galvanized, passivated with a thick layer, Standard profile, color: silver, Pack of 25 (50 m)

UK 10-DREHSI (6,3X32) - Fuse modular terminal block



3005507

<https://www.phoenixcontact.com/us/products/3005507>

NS 35/ 7,5 WH PERF 2000MM - DIN rail perforated

1204119

<https://www.phoenixcontact.com/us/products/1204119>



DIN rail perforated, acc. to EN 60715, material: Steel, Galvanized, white passivated, Standard profile, color: silver, Pack of 25 (50 m)

NS 35/ 7,5 WH UNPERF 2000MM-VPE 10 - DIN rail, unperforated

1204122

<https://www.phoenixcontact.com/us/products/1204122>



DIN rail, unperforated, acc. to EN 60715, material: Steel, Galvanized, white passivated, Standard profile, color: silver, Pack of 10 (20 m)

UK 10-DREHSI (6,3X32) - Fuse modular terminal block



3005507

<https://www.phoenixcontact.com/us/products/3005507>

NS 35/ 7,5 AL UNPERF 2000MM - DIN rail, unperforated

0801704

<https://www.phoenixcontact.com/us/products/0801704>



DIN rail, unperforated, acc. to EN 60715, material: Aluminum, uncoated, Standard profile, color: silver, Pack of 25 (50 m)

NS 35/ 7,5 ZN PERF 2000MM - DIN rail perforated

1206421

<https://www.phoenixcontact.com/us/products/1206421>



DIN rail perforated, acc. to EN 60715, material: Steel, galvanized, Standard profile, color: silver, Pack of 25 (50 m)

UK 10-DREHSI (6,3X32) - Fuse modular terminal block



3005507

<https://www.phoenixcontact.com/us/products/3005507>

NS 35/ 7,5 ZN UNPERF 2000MM - DIN rail, unperforated

1206434

<https://www.phoenixcontact.com/us/products/1206434>



DIN rail, unperforated, acc. to EN 60715, material: Steel, galvanized, Standard profile, color: silver, Pack of 25 (50 m)

NS 35/ 7,5 CU UNPERF 2000MM-VPE 10 - DIN rail, unperforated

0801762

<https://www.phoenixcontact.com/us/products/0801762>



DIN rail, unperforated, acc. to EN 60715, material: Copper, uncoated, Standard profile, color: copper-colored, Pack of 10 (20 m)

UK 10-DREHSI (6,3X32) - Fuse modular terminal block



3005507

<https://www.phoenixcontact.com/us/products/3005507>

NS 35/ 7,5 CAP - End cap

1206560

<https://www.phoenixcontact.com/us/products/1206560>

DIN rail end piece, for DIN rail NS 35/7.5



NS 35/15 PERF 2000MM - DIN rail perforated

1201730

<https://www.phoenixcontact.com/us/products/1201730>



DIN rail perforated, similar to EN 60715, material: Steel, galvanized, passivated with a thick layer, Standard profile, color: silver, Pack of 25 (50 m)

UK 10-DREHSI (6,3X32) - Fuse modular terminal block



3005507

<https://www.phoenixcontact.com/us/products/3005507>

NS 35/15 UNPERF 2000MM - DIN rail, unperforated

1201714

<https://www.phoenixcontact.com/us/products/1201714>



DIN rail, unperforated, similar to EN 60715, material: Steel, galvanized, passivated with a thick layer, Standard profile, color: silver, Pack of 25 (50 m)

NS 35/15 WH PERF 2000MM - DIN rail perforated

0806602

<https://www.phoenixcontact.com/us/products/0806602>



DIN rail perforated, similar to EN 60715, material: Steel, Galvanized, white passivated, Standard profile, color: white, Pack of 25 (50 m)

UK 10-DREHSI (6,3X32) - Fuse modular terminal block



3005507

<https://www.phoenixcontact.com/us/products/3005507>

NS 35/15 WH UNPERF 2000MM-VPE 10 - DIN rail, unperforated

1204135

<https://www.phoenixcontact.com/us/products/1204135>



DIN rail, unperforated, similar to EN 60715, material: Steel, Galvanized, white passivated, Standard profile, color: silver, Pack of 10 (20 m)

NS 35/15 AL UNPERF 2000MM - DIN rail, unperforated

1201756

<https://www.phoenixcontact.com/us/products/1201756>



DIN rail, unperforated, similar to EN 60715, material: Aluminum, uncoated, Standard profile, color: silver

UK 10-DREHSI (6,3X32) - Fuse modular terminal block



3005507

<https://www.phoenixcontact.com/us/products/3005507>

NS 35/15 ZN PERF 2000MM - DIN rail perforated

1206599

<https://www.phoenixcontact.com/us/products/1206599>



DIN rail perforated, similar to EN 60715, material: Steel, galvanized, Standard profile, color: silver, Pack of 25 (50 m)

NS 35/15 ZN UNPERF 2000MM - DIN rail, unperforated

1206586

<https://www.phoenixcontact.com/us/products/1206586>



DIN rail, unperforated, similar to EN 60715, material: Steel, galvanized, Standard profile, color: silver, Pack of 25 (50 m)

UK 10-DREHSI (6,3X32) - Fuse modular terminal block



3005507

<https://www.phoenixcontact.com/us/products/3005507>

NS 35/15 CU UNPERF 2000MM-VPE 10 - DIN rail, unperforated

1201895

<https://www.phoenixcontact.com/us/products/1201895>



DIN rail, unperforated, similar to EN 60715, material: Copper, uncoated, Standard profile, color: copper-colored, Pack of 10 (20 m)

NS 35/15 CAP - End cap

1206573

<https://www.phoenixcontact.com/us/products/1206573>

DIN rail end piece, for DIN rail NS 35/15



UK 10-DREHSI (6,3X32) - Fuse modular terminal block



3005507

<https://www.phoenixcontact.com/us/products/3005507>

NS 35/15-2,3 UNPERF 2000MM-VPE 10 - DIN rail, unperforated

1201798

<https://www.phoenixcontact.com/us/products/1201798>



DIN rail, unperforated, acc. to EN 60715, material: Steel, galvanized, passivated with a thick layer, Standard profile 2.3 mm, color: silver, Pack of 10 (20 m)

ZB 6:UNBEDRUCKT - Zack marker strip

1051003

<https://www.phoenixcontact.com/us/products/1051003>



Zack marker strip, Strip, white, unlabeled, can be labeled with: PLOTMARK, CMS-P1-PLOTTER, mounting type: snapped, for terminal block width: 6.2 mm, lettering field size: 6.15 x 10.5 mm, Number of individual labels: 10

UK 10-DREHSI (6,3X32) - Fuse modular terminal block



3005507

<https://www.phoenixcontact.com/us/products/3005507>

ZB 6 CUS - Zack marker strip

0824992

<https://www.phoenixcontact.com/us/products/0824992>



Zack marker strip, can be ordered: Strip, white, labeled according to customer specifications, mounting type: snap into tall marker groove, for terminal block width: 6.2 mm, lettering field size: 6.15 x 10.5 mm, Number of individual labels: 10

ZB 6,LGS:FORTL.ZAHLEN - Zack marker strip

1051016

<https://www.phoenixcontact.com/us/products/1051016>



Zack marker strip, Strip, white, labeled, can be labeled with: CMS-P1-PLOTTER, printed horizontally: consecutive numbers 1 ... 10, 11 ... 20, etc. up to 491 ... 500, mounting type: snapped, for terminal block width: 6.2 mm, lettering field size: 6.15 x 10.5 mm, Number of individual labels: 10

UK 10-DREHSI (6,3X32) - Fuse modular terminal block



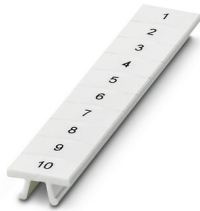
3005507

<https://www.phoenixcontact.com/us/products/3005507>

ZB 6,QR:FORTL.ZAHLEN - Zack marker strip

1051029

<https://www.phoenixcontact.com/us/products/1051029>



Zack marker strip, Strip, white, labeled, can be labeled with: CMS-P1-PLOTTER, Printed vertically: consecutive numbers 1 ... 10, 11 ... 20, etc. up to 491 ... 500, mounting type: snapped, for terminal block width: 6.2 mm, lettering field size: 6.15 x 10.5 mm, Number of individual labels: 10

ZB 6,LGS:GLEICHE ZAHLEN - Zack marker strip

1051032

<https://www.phoenixcontact.com/us/products/1051032>



Zack marker strip, Strip, white, labeled, can be labeled with: CMS-P1-PLOTTER, printed horizontally: Identical numbers 1 or 2, etc. up to 100, mounting type: snapped, for terminal block width: 6.2 mm, lettering field size: 6.15 x 10.5 mm, Number of individual labels: 10

UK 10-DREHSI (6,3X32) - Fuse modular terminal block



3005507

<https://www.phoenixcontact.com/us/products/3005507>

ZB 6,LGS:L1-N,PE - Marker for terminal blocks

1051414

<https://www.phoenixcontact.com/us/products/1051414>



Marker for terminal blocks, Strip, white, labeled, can be labeled with: CMS-P1-PLOTTER, horizontal: L1, L2, L3, N, PE, L1, L2, L3, N, PE, mounting type: snapped, for terminal block width: 6.2 mm, lettering field size: 6.15 x 10.5 mm, Number of individual labels: 10

ZB 6,LGS:U-N - Marker for terminal blocks

1051430

<https://www.phoenixcontact.com/us/products/1051430>



Marker for terminal blocks, Strip, white, labeled, can be labeled with: CMS-P1-PLOTTER, printed horizontally: U, V, W, N, GND, U, V, W, N, GND, mounting type: snapped, for terminal block width: 6.2 mm, lettering field size: 6.15 x 10.5 mm, Number of individual labels: 10

UK 10-DREHSI (6,3X32) - Fuse modular terminal block



3005507

<https://www.phoenixcontact.com/us/products/3005507>

UC-TM 6 - Marker for terminal blocks

0818085

<https://www.phoenixcontact.com/us/products/0818085>



Marker for terminal blocks, Sheet, white, unlabeled, can be labeled with: BLUEMARK ID COLOR, BLUEMARK ID, BLUEMARK CLED, PLOTMARK, CMS-P1-PLOTTER, mounting type: snapped, for terminal block width: 6.2 mm, lettering field size: 5.6 x 10.5 mm, Number of individual labels: 80

UC-TM 6 CUS - Marker for terminal blocks

0824589

<https://www.phoenixcontact.com/us/products/0824589>



Marker for terminal blocks, can be ordered: by sheet, white, labeled according to customer specifications, mounting type: snap into tall marker groove, for terminal block width: 6.2 mm, lettering field size: 5.6 x 10.5 mm, Number of individual labels: 80

UK 10-DREHSI (6,3X32) - Fuse modular terminal block



3005507

<https://www.phoenixcontact.com/us/products/3005507>

UCT-TM 6 - Marker for terminal blocks

0828736

<https://www.phoenixcontact.com/us/products/0828736>



Marker for terminal blocks, Sheet, white, unlabeled, can be labeled with: TOPMARK NEO, TOPMARK LASER, BLUEMARK ID COLOR, BLUEMARK ID, BLUEMARK CLED, THERMOMARK PRIME, THERMOMARK CARD 2.0, THERMOMARK CARD, mounting type: snapped, for terminal block width: 6.2 mm, lettering field size: 5.6 x 10.5 mm, Number of individual labels: 60

UCT-TM 6 CUS - Marker for terminal blocks

0829602

<https://www.phoenixcontact.com/us/products/0829602>



Marker for terminal blocks, can be ordered: by sheet, white, labeled according to customer specifications, mounting type: snap into tall marker groove, for terminal block width: 6.2 mm, lettering field size: 5.6 x 10.5 mm, Number of individual labels: 60

UK 10-DREHSI (6,3X32) - Fuse modular terminal block



3005507

<https://www.phoenixcontact.com/us/products/3005507>

CLIPFIX 35 - End clamp

3022218

<https://www.phoenixcontact.com/us/products/3022218>



Quick mounting end clamp for NS 35/7,5 DIN rail or NS 35/15 DIN rail, with marking option, width: 9.5 mm, color: gray

CLIPFIX 35-5 - End clamp

3022276

<https://www.phoenixcontact.com/us/products/3022276>



Quick mounting end clamp for NS 35/7,5 DIN rail or NS 35/15 DIN rail, with marking option, with parking option for FBS...5, FBS...6, KSS 5, KSS 6, width: 5.15 mm, color: gray

UK 10-DREHSI (6,3X32) - Fuse modular terminal block



3005507

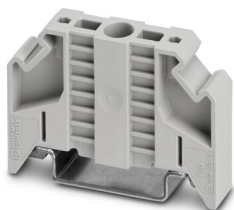
<https://www.phoenixcontact.com/us/products/3005507>

E/NS 35 N - End clamp

0800886

<https://www.phoenixcontact.com/us/products/0800886>

End clamp, width: 9.5 mm, color: gray



E/UK - End clamp

1201442

<https://www.phoenixcontact.com/us/products/1201442>

End clamp, material: PA, color: gray, Mounting on a DIN rail NS 32 or NS 35



UK 10-DREHSI (6,3X32) - Fuse modular terminal block



3005507

<https://www.phoenixcontact.com/us/products/3005507>

E/UK 1 - End clamp

1201413

<https://www.phoenixcontact.com/us/products/1201413>



End clamps, for supporting the ends of double-level and three-level terminal blocks, width: 10 mm, color: gray

PSBJ 4/15/6 FARBLOS - Female test connector

0303419

<https://www.phoenixcontact.com/us/products/0303419>



Female test connector, number of positions: 1, color: transparent

UK 10-DREHSI (6,3X32) - Fuse modular terminal block



3005507

<https://www.phoenixcontact.com/us/products/3005507>

PSBJ 4/15/6 WH - Female test connector

0303312

<https://www.phoenixcontact.com/us/products/0303312>



Female test connector, number of positions: 1, color: white

PSBJ 4/15/6 RD - Female test connector

0303325

<https://www.phoenixcontact.com/us/products/0303325>



Female test connector, number of positions: 1, color: red

UK 10-DREHSI (6,3X32) - Fuse modular terminal block



3005507

<https://www.phoenixcontact.com/us/products/3005507>

PSBJ 4/15/6 BU - Female test connector

0303354

<https://www.phoenixcontact.com/us/products/0303354>



Female test connector, number of positions: 1, color: blue

PSBJ 4/15/6 YE - Female test connector

0303367

<https://www.phoenixcontact.com/us/products/0303367>



Female test connector, number of positions: 1, color: yellow

UK 10-DREHSI (6,3X32) - Fuse modular terminal block



3005507

<https://www.phoenixcontact.com/us/products/3005507>

PSBJ 4/15/6 GN - Female test connector

0303370

<https://www.phoenixcontact.com/us/products/0303370>



Female test connector, number of positions: 1, color: green

PSBJ 4/15/6 VT - Female test connector

0303383

<https://www.phoenixcontact.com/us/products/0303383>



Female test connector, number of positions: 1, color: violet

UK 10-DREHSI (6,3X32) - Fuse modular terminal block



3005507

<https://www.phoenixcontact.com/us/products/3005507>

PSBJ 4/15/6 GY - Female test connector

0303396

<https://www.phoenixcontact.com/us/products/0303396>



Female test connector, number of positions: 1, color: gray

PSBJ 4/15/6 BK - Female test connector

0303406

<https://www.phoenixcontact.com/us/products/0303406>



Female test connector, number of positions: 1, color: black

UK 10-DREHSI (6,3X32) - Fuse modular terminal block



3005507

<https://www.phoenixcontact.com/us/products/3005507>

PSB 4/7/6 - Female test connector

0303299

<https://www.phoenixcontact.com/us/products/0303299>

Female test connector, number of positions: 1, color: silver



Phoenix Contact 2023 © - all rights reserved

<https://www.phoenixcontact.com>

Phoenix Contact USA

586 Fulling Mill Road

Middletown, PA 17057, United States

(+717) 944-1300

info@phoenixcon.com