

17-38 CFM Filterfans *PF GEN4 Series*

Type 12



Features

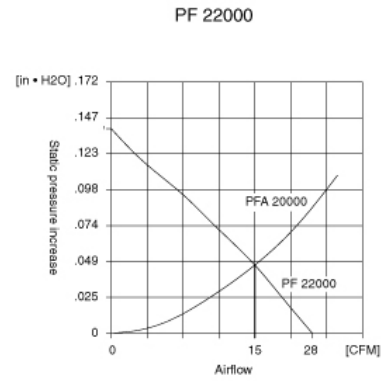
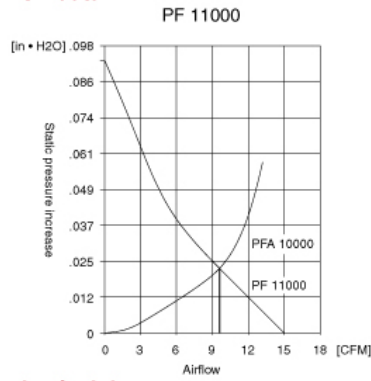
- Maintains a UL Tested NEMA Type 12 seal against enclosure
- UL Recognized to UL 508a, category NITW2/8, UL File #E175229
- Patented “Click & Fit” design provides a hardware free installation!
- Plastic made from strong, heat resistant (ABS-FR), UL 94 VO fire approved material
- Fan motor is CSA approved
- Options: Black grills

Accessories

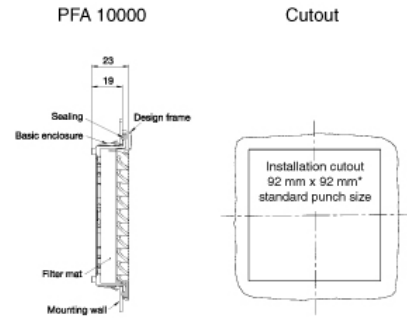
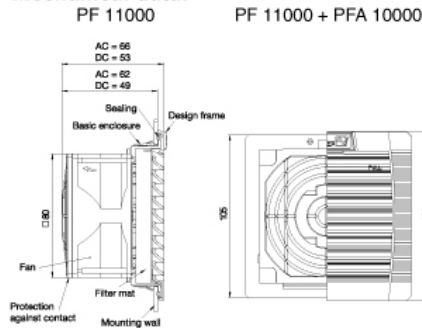
- Exhaust Filters
- Replacement Filters



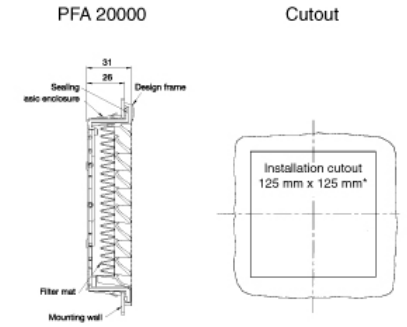
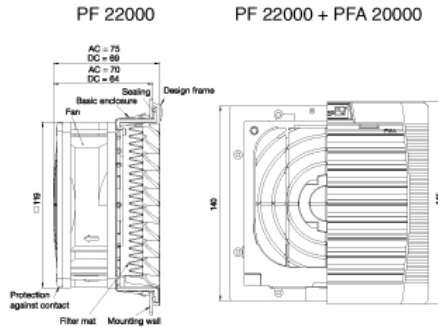
Airflow data:



Mechanical data:



Mechanical data:



Part Number	Part Number	Voltage	Power	Filter	Mating Exhaust Filter	Mating Exhaust Filter	Ship Wt. lbs.
PF1100T12LG	PF1100T12BK	115V	11W	PFA1000LG	PFA1000BK		1.5
PF1100T12LG230	PF1100T12BK230	230V	11W	PFA1000LG	PFA1000BK		1.5
PF1100T12LG24	PF1100T12BK24	24V	2W	PFA1000LG	PFA1000BK		1.5
PF2200T12LG	PF2200T12BK	115V	20W	PFA2000LG	PFA2000BK		2
PF2200T12LG230	PF2200T12BK230	230V	18W	PFA2000LG	PFA2000BK		2
PF2200T12LG24	PF2200T12BK24	24V	5W	PFA2000LG	PFA2000BK		2

Airflow data	PF 11000	PF 22000	PFA 1-20000
Filter material	Type 12 filter mat	Type 12 filter mat	Type 12 filter mat
Unimpeded airflow	17 CFM	38 CFM	-
Capacity free-flow	10 W/K	21 W/K	-
Airflow in combination	11 CFM	28 CFM	-
(Filterfan + Exhaust Filter)	(PF 11000 + PFA 10000)	(PF 22000 + PFA 20000)	-
Capacity in combination	6 W/K	15 W/K	-
(Filterfan + Exhaust Filter)	(PF 11000 + PFA 10000)	(PF 22000 + PFA 20000)	-
Max. static pressure (Airflow = 0 m3/h)	38 Pa	57 Pa	-

Airflow data	PF 11000	PF 22000	PFA 1-20000
Filtration efficiency	0.88	0.91	88/91%
Filter material grade	G 3 (DIN EN 779)	G 4 (DIN EN 779)	G3/ G4 (DIN EN 779)
Duty cycle	1	1	-

Technical data	PF 11000	PF 11000	PF 22000	PF 22000	PFA 10000
	AC	DC	AC	DC	PFA 20000
Outside dimensions in mm (height x width x installation depth)	109 x 109 x 62	109 x 109 x 49	145 x 145 x 70	145 x 145 x 64	109 x 109 x 26/ 145 x 145 x 26
Bearing type	sleeve bearings	ball bearings	sleeve bearings	ball bearings	-
Fitting position	vertical	any	vertical	any	-
Construction	housing and guard of sprayed thermoplastic, self-extinguishing, UL 94 VO				
Weight	0.55 kg	0.16 kg	0.7 kg	0.44 kg	0.06 kg / 0.12 kg
Safety protection	in accordance with DIN 31 001				
Color	RAL 7035, Light Grey				
Connection	2 wires, 310 mm long	terminal strip			
System of protection	NEMA Type 12, IP 55 (EN 60 529), when installed as specified				

Data subject to change without notice