

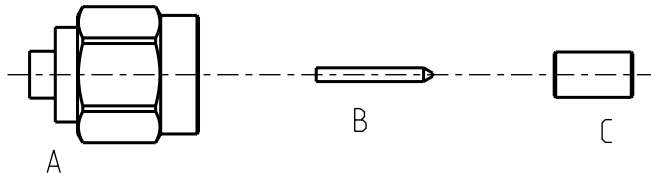
Montageanleitung:

MA_32A20

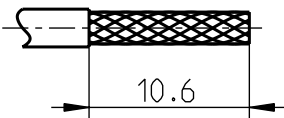
Serie: SMA

Verbinder gerade fuer flexible und Semi-Rigid-Kabel

Kabelbefestigung:
 Innenleiter geloetet
 Aussenleiter geloetet

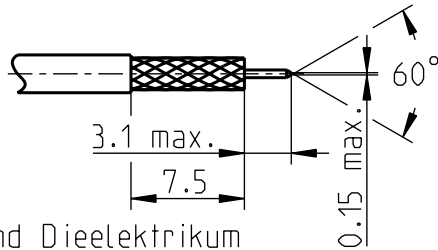
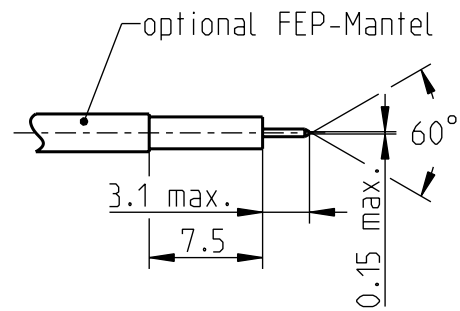


Fuer flexible Kabel:



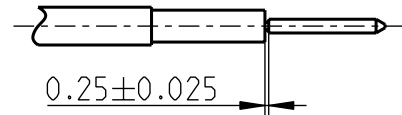
- 1a) Kabel nach Zeichnung abisolieren.
- 1b) Schirm tauchverzinnen.

Fuer Semi-Rigid-Kabel:



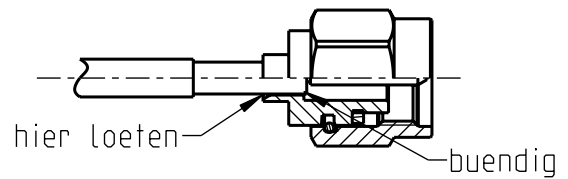
- 1c) Schirm und Dielektrikum nach Zeichnung entfernen und Innenleiter anfasen

- 2) Innenleiter B auf das Kabel schieben und auf Distanz festloeten.

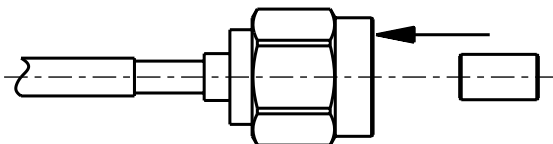


- 3) Das so vorbereitete Kabel in den Steckerkoerper A schieben. Der Kabelaussenleiter muss buendig mit der Stufe im Steckeraussenleiter sein.

- 4) Den Steckeraussenleiter wie dargestellt mit dem Kabelaussenleiter verloeten



- 5) Isolierteil C in den Steckerkoerper einpressen und Anschlussmaß kontrollieren.



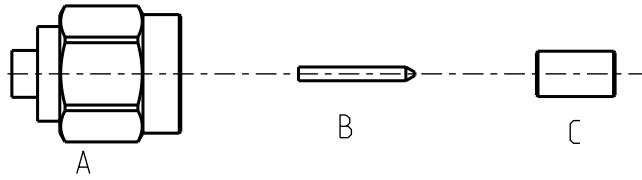
				date	name	scale:	Werkzeuge:		
				drawn 17.12.2002	S_Krautenbac	2:1	Abisolierwerkzeug	
				check. 05.12.2014	E_Schwangler	sheet:	Loetausruestung	
				appr. 05.12.2014	E_Schwangler	1/2	Distanzlehre	
d00	14-1793	A_Wallner	05.12.2014	Rosenberger			
c00	10-0634	E_Gerl	13.09.2010				
b00	03-0378	J_Gramsamer	11.06.2003				
rev.	change-no	name	date				
							

Assembly Instruction: 32 A20

Series: SMA

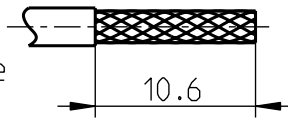
Straight connector for flexible and semi-rigid cables

Cable entry:
Center conductor and
Outer conductor soldered

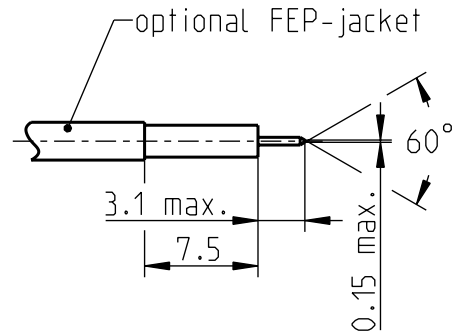
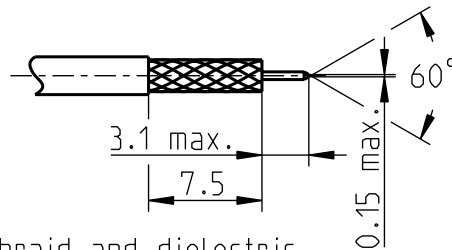


For flexible cables:

- 1a) Prepare the cable acc. to drawing.
- 1b) Tin-dip braid.

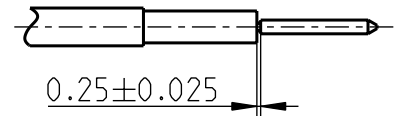


For semi-rigid cables:

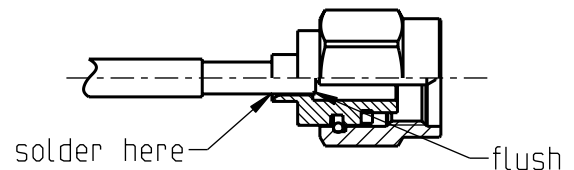


- 1c) Remove braid and dielectric as shown and chamfer center contact.

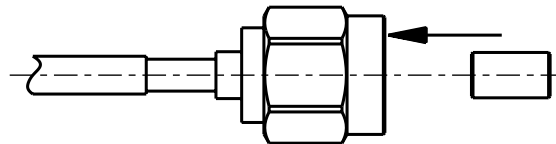
- 2) Push center pin B onto the cable inner conductor and solder maintaining the indicated space.



- 3) Insert the prepared cable into connector body A. Cable outer conductor has to be flush with step of connector body.
- 4) Solder connector body to cable outer conductor as shown.



- 5) Press insulator C into connector body. Check interface dimensions.



				date	name	scale:	Tools:			
				drawn	17.12.2002	S_Krautenbac	2:1	Stripping tool	
				check.	05.12.2014	E_Schwangler	sheet:	Solder equipment	
				appr.	05.12.2014	E_Schwangler	2/2	Solder gauge	
d00	14-1793	A_Wallner	05.12.2014	Rosenberger				
c00	10-0634	E_Gerl	13.09.2010					
b00	03-0378	J_Gramsamer	11.06.2003					
rev.	change-no	name	date					
								