

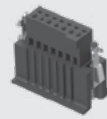


TIGER EYE™
DISCRETE

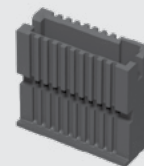


CC03R-2830-01-G

ISDF-07-D-M



TSDF-10-D-S



T1M44-M-2830-01-G

(1.27 mm) .050"

ISDF, CC03R, CC03M, TSDF, T1M44-R, T1M44-M SERIES

DISCRETE WIRE COMPONENTS & TOOLING

SPECIFICATIONS

For complete specifications see www.samtec.com?ISDF, www.samtec.com?CC03R or www.samtec.com?CC03M

Insulator Material: Black LCP
Contact Material: BeCu

RECOGNITIONS

For complete scope of recognitions see www.samtec.com/quality



FILE NO. E111594

TOOLING

- Hand Tool: CAT-HT-203-2830-12
- Clamp for mounting hand tool to work table: CAT-HT-MNT-01
- Mini Applicator: CAT-MC-203-2830-XX-01
- Extraction Tool: CAT-EX-169-01

Note: Some sizes, styles and options are non-standard, non-returnable.

TYPE	POSITIONS PER ROW	ROW OPTION	OPTION	TYPE	WIRE GAUGE	01	PLATING
ISDF = Housing	-03, -04, -05, -07, -10, -15, -20, -25, -40, -50 (Standard sizes)	-S = Single Row -D = Double Row	-M = Metal Retention Latch -S = Screw Down (-D only)	CC03R = Contact, Full Reel (35,000 parts per Reel) CC03M = Contact, Mini Reel (1,000-5,000 parts per Reel)	-2830 = 28 to 30 AWG		-GF = Gold flash on contact -G = 10 μm (0.25 μm) Gold on contact



SPECIFICATIONS

For complete specifications see www.samtec.com?TSDF, www.samtec.com?T1M44-R or www.samtec.com?T1M44-M

Insulator Material: Black LCP
Contact Material: BeCu

TOOLING

- Hand Tool: CAT-HT-144-2830-12
- Mini Applicator: CAT-MC-144-2830-XX-01
- Extraction Tool: CAT-EX-169-01

Note: Some sizes, styles and options are non-standard, non-returnable.

TYPE	POSITIONS PER ROW	ROW OPTION	S	TYPE	WIRE GAUGE	01	PLATING
TSDF = Housing	-03, -04, -05, -07, -10, -15, -20, -25, -40, -50 (Standard sizes)	-D = Double Row		T1M44-R = Terminal, Full Reel (35,000 parts per Reel) T1M44-M = Terminal, Mini Reel (5,000 parts per Reel)	-2830 = 28 to 30 AWG		-G = 10 μm (0.25 μm) Gold on contact

Due to technical progress, all designs, specifications and components are subject to change without notice.

WWW.SAMTEC.COM

All parts within this catalog are built to Samtec's specifications. Customer specific requirements must be approved by Samtec and identified in a Samtec customer-specific drawing to apply.

Mouser Electronics

Authorized Distributor

Click to View Pricing, Inventory, Delivery & Lifecycle Information:

Samtec:

[ISDF-25-D-S](#) [ISDF-15-D-M](#) [ISDF-04-S-M](#) [ISDF-10-S-M](#) [ISDF-07-S-M](#) [ISDF-03-S-M](#) [ISDF-05-S-M](#) [ISDF-06-S-M](#)
[ISDF-08-S-M](#) [ISDF-40-S-M](#) [ISDF-02-S-M](#) [ISDF-20-S-M](#) [ISDF-25-S-M](#) [ISDF-06-D-S](#) [ISDF-15-S-M](#) [ISDF-35-S-M](#)
[ISDF-12-S-M](#) [ISDF-30-S-M](#) [ISDF-45-S-M](#) [ISDF-50-S-M](#) [ISDF-07-D-L](#) [ISDF-10-D](#) [ISDF-07-D-M](#) [ISDF-20-D](#) [ISDF-](#)
[10-D-M](#) [ISDF-25-D](#) [ISDF-05-D-M](#) [ISDF-25-D-M](#) [ISDF-05-D-S](#) [ISDF-10-D-S](#) [ISDF-04-D-M](#) [ISDF-25-S](#) [ISDF-03-D-](#)
[DS](#) [ISDF-05-S](#) [ISDF-07-D-DS](#) [ISDF-04-S-R](#) [ISDF-07-D](#) [ISDF-04-D](#) [ISDF-50-D-S](#) [ISDF-25-D-R](#) [ISDF-40-D-DS](#)
[ISDF-07-D-S](#) [ISDF-20-D-L](#) [ISDF-50-D-R](#) [ISDF-03-D](#) [ISDF-15-D-R](#) [ISDF-05-D-L](#) [ISDF-15-D](#) [ISDF-04-S](#) [ISDF-10-S](#)
[ISDF-10-D-DS](#) [ISDF-15-S](#) [ISDF-07-D-R](#) [ISDF-20-D-S](#) [ISDF-10-D-L](#) [ISDF-07-S-R](#) [ISDF-03-S](#) [ISDF-03-D-S](#) [ISDF-](#)
[40-D-L](#) [ISDF-03-S-R](#) [ISDF-25-S-R](#) [ISDF-10-S-R](#) [ISDF-05-D](#) [ISDF-15-D-S](#) [ISDF-04-D-R](#) [ISDF-04-D-DS](#) [ISDF-50-D](#)
[ISDF-20-D-R](#) [ISDF-20-D-DS](#) [ISDF-50-D-DS](#) [ISDF-04-D-S](#) [ISDF-05-D-DS](#) [ISDF-15-D-DS](#) [ISDF-50-D-L](#) [ISDF-03-D-](#)
[M](#) [ISDF-05-D-R](#) [ISDF-50-S-R](#) [ISDF-07-D-C](#) [ISDF-40-S-R](#) [ISDF-15-S-R](#) [ISDF-25-D-DS](#) [ISDF-20-D-M](#) [ISDF-40-D](#)
[ISDF-03-D-R](#) [ISDF-40-D-R](#) [ISDF-20-S-R](#) [ISDF-40-D-S](#) [ISDF-07-S](#) [ISDF-20-S](#) [ISDF-15-D-L](#) [ISDF-25-D-L](#) [ISDF-05-](#)
[S-R](#) [ISDF-40-S](#) [ISDF-10-D-R](#) [ISDF-40-D-M](#) [ISDF-50-D-M](#) [ISDF-50-S](#)