

INTRODUCTIONS

1. Power module incorporates an IEC connector, single or double-fuse (IEC 5 x 20mm) holder, optional voltage selector switch and double-pole power switch, plus an EMI filter all-in-one easy-to-install unit.
2. Adapts to 110-120V or 220-240V input voltage by simply reversing the fuse cartridge.
3. All part numbers are UL recognized, CSA certified and VDE approved.
4. Switch electrical lifetime: 10,000 cycles.
Maximum inrush current: 70A.

SPECIFICATIONS

1. Maximum leakage current each line-to-ground @ 115VAC 60Hz: 0.25mA
@ 250VAC 50Hz: 0.45mA
2. Hipot rating (one minute)
line-to-ground: 2250VDC
line-to-line: 1450VDC
3. Operating frequency: 50/60Hz
4. Rated voltage: 115/250VAC

COMPONENTS



PART NO.	L (mH)	Cx (uF)	Cy (pF)	R (Ω)
03EB3	8	0.22	3300	1M
03EB3A				
03EB3S				
03EB3SA				
06EB3	2.5	0.22	3300	1M
06EB3A				
06EB3S				
06EB3SA				

PART NO.	L (mH)	Cx (uF)	Cy (pF)	R (Ω)
10EB3	1.6	0.22	3300	1M
10EB3A				
10EB3S				
10EB3SA				

Lg: 400 uH (EB3A, EB3SA only)



PART NO.	L (mH)	Cx (uF)	Cy (pF)	R(Ω)
05EB3B/S	0.93	0.01	2200	1M

TYPE & FEATURE

DELTA PART NO.	03EB3 05EB3B 06EB3 10EB3	03EB3A 06EB3A 10EB3A	03EB3S 05EB3BS 06EB3S 10EB3S	03EB3SA 06EB3SA 10EB3SA
• FUSE	DOUBLE	DOUBLE	SINGLE	SINGLE
IEC CONNECTOR	△	△	△	△
•• DOUBLE POLE POWER SWITCH	△	△	△	△
VOLTAGE SELECTOR SW	△	△	△	△
ELECTRICAL SCHEMATIC	FIG.A	FIG.B	FIG.A	FIG.B

- UL, CSA & VDE approved current rating: UL-10A both at 125VAC & 250VAC; CSA & VDE-6A at 250VAC.
- UL, CSA & VDE approved current rating: UL & CSA-10A both at 125VAC & 250VAC; VDE-10A at 250VAC.

ELECTRICAL SCHEMATIC

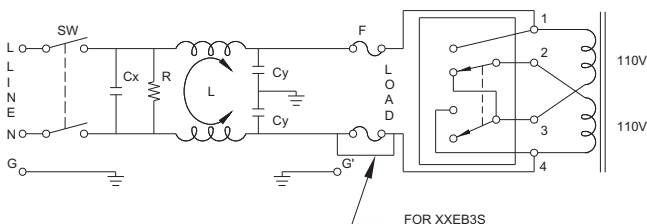
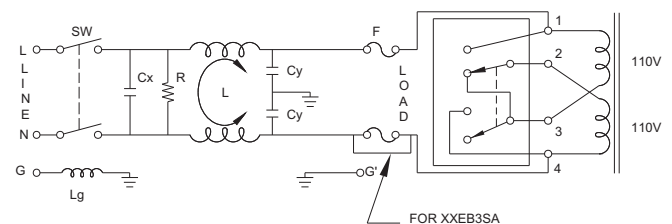
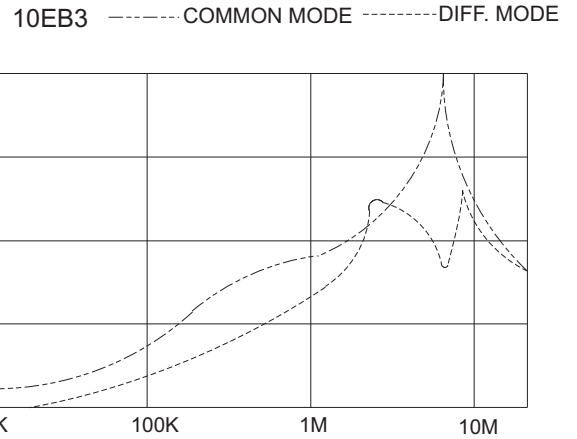
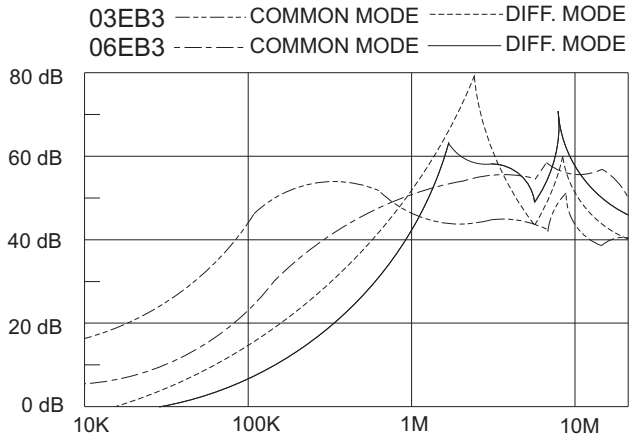


FIG. A



EB3A, EB3SA
FIG. B

INSERTION LOSS (TYPICAL)



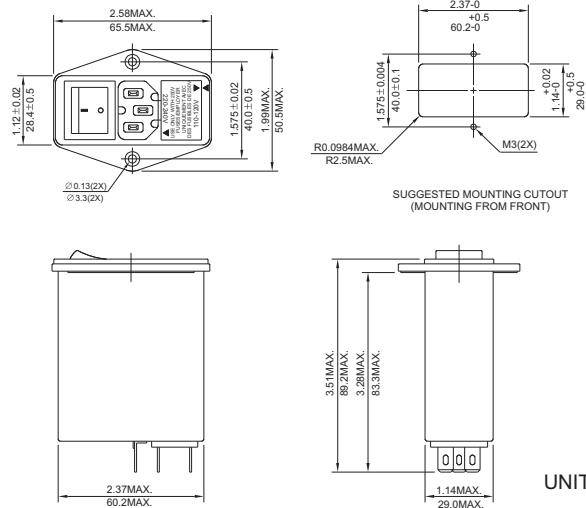
MINIMUM INSERTION LOSS IN dB

COMMON MODE (L-G) IN 50 OHM SYSTEM		FREQUENCY-MHz							
CURRENT RATING		0.05	0.10	0.15	0.50	1.0	5.0	10	30
3A (S)		20	25	30	38	38	38	38	25
6A (S)		10	15	20	30	35	40	40	30
•10A (S)		10	15	20	20	30	40	40	30
3A (A,SA)		20	25	30	40	40	40	45	30
6A (A,SA)		10	15	20	25	30	40	45	30
•10A (A,SA)		10	15	20	25	30	45	50	30

DIFFERENTIAL MODE (L-L) IN 50 OHM SYSTEM								
3A (S)	2	9	12	30	40	30	40	30
6A (S)	2	5	8	20	30	30	45	40
•10A (S)	2	5	8	15	30	40	45	35
3A (A,SA)	2	8	12	30	40	35	40	30
6A (A,SA)	2	5	10	15	30	45	50	40
•10A (A,SA)	2	5	8	20	30	50	50	40

•CSA approved 6A at 125/250 VAC; VDE-6A/250VAC

MECHANICAL CONSTRUCTION



UNIT: INCH / mm

Mouser Electronics

Authorized Distributor

Click to View Pricing, Inventory, Delivery & Lifecycle Information:

[Delta Electronics:](#)

[10EB3](#) [03EB3SA](#) [03EB3A](#) [10EB3A](#) [06EB3S](#) [06EB3SA](#) [03EB3S](#) [06EB3](#) [10EB3S](#) [10EB3SA](#) [06EB3A](#) [03EB3](#)