



TME50-XL-N

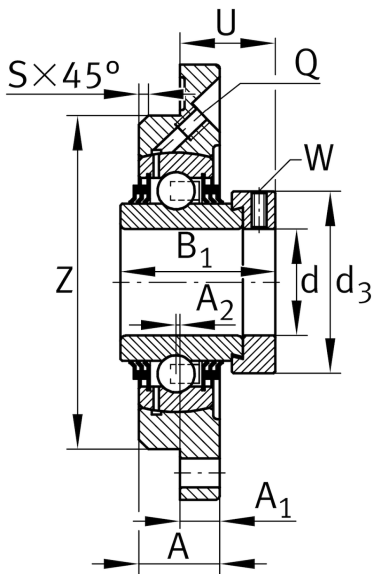
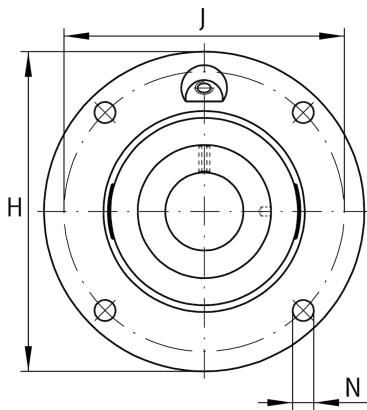
Flanged housing unit

Schaeffler ID:
0008572970000

Flanged housing unit TME...-XL-N

X-life

Technical information



Main Dimensions & Performance Data

d	50 mm	Bore diameter
H	165 mm	Height flange
B ₁	62,8 mm	Locking collar total width
U	37,1 mm	Total height unit
C _r	35.000 N	Basic dynamic load rating, radial
C _{0r}	23.200 N	Basic static load rating, radial
C _{ur}	990 N	Fatigue load limit, radial
	2,32 kg	Weight

Mounting dimensions

J	135 mm	Distance fixing bore
J	135 mm	Pitch circle diameter (holes)
N	14 mm	Fixing bore
Z	110 mm	Diameter spigot
	h8	Diameter spigot clearance
n	4	Number of screwing holes

Dimensions

A ₁	13 mm	Thickness of flange
A ₂	1 mm	Distance raceway
S	3 mm	Chamfer width
Q	M8X1	Connection thread lubrication

Additional information

GE50-XL-KTT-B	Bearing designation
KASK10	Protecting cap