

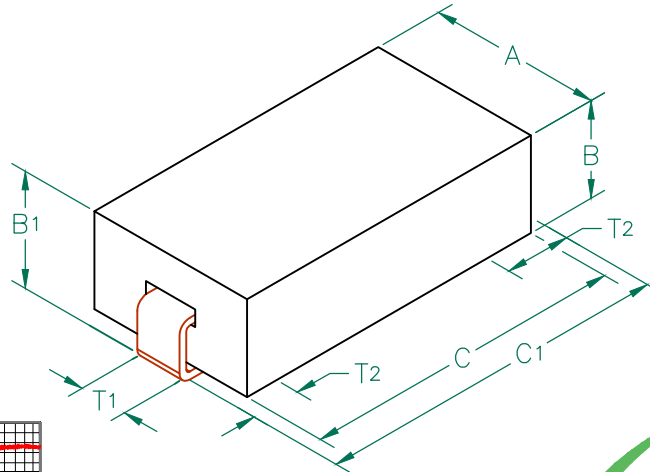
# 28F0181-1SR-10

## PHYSICAL DIMENSIONS:

A	4.57 [ .180 ]	± 0.08 [ .003 ]
B	2.54 [ .100 ]	± 0.08 [ .003 ]
B <sub>1</sub>	3.05 [ .120 ]	± MAX
C	8.51 [ .335 ]	± 0.23 [ .009 ]
C <sub>1</sub>	9.53 [ .375 ]	± MAX

## WIRE DIMENSIONS:

T <sub>1</sub>	1.27 [ .050 ]	± REF.
T <sub>2</sub>	1.52 [ .060 ]	± 0.51 [ .020 ]



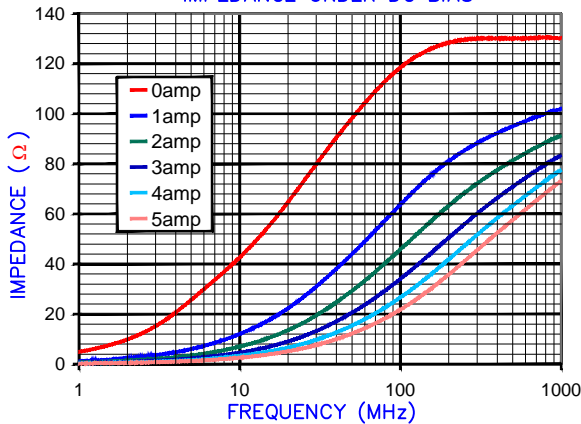
## ELECTRICAL CHARACTERISTICS:

	Z (Ω) @		DCR (Ω)	Rated Current
	25MHz	100MHz		
Nominal	67	115		
Minimum	—	87		
Maximum	—	144	.001	10,000 mA

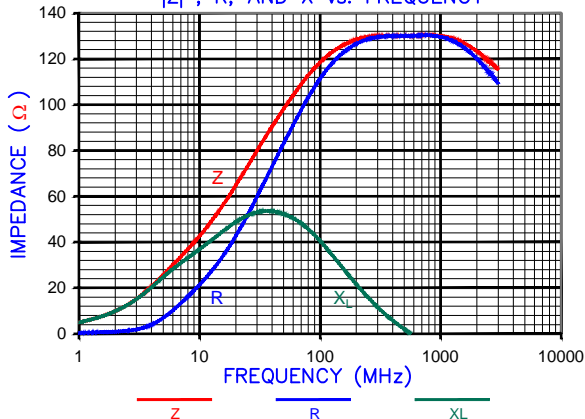
NOTES: UNLESS OTHERWISE SPECIFIED

1. TAPED AND REELED per CURRENT EIA SPECS. 13" REELS, 2,500 pcs/REEL.
2. COMPONENTS SHOULD BE ADEQUATELY PREHEATED BEFORE SOLDERING.
3. REF. CARRIER TAPE SPECIFICATION # CART181-13.
4. TERMINATION FINISH IS 100% TIN.

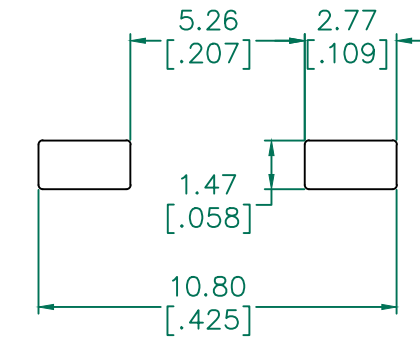
Z vs. FREQUENCY  
IMPEDANCE UNDER DC BIAS



|Z|, R, AND X vs. FREQUENCY

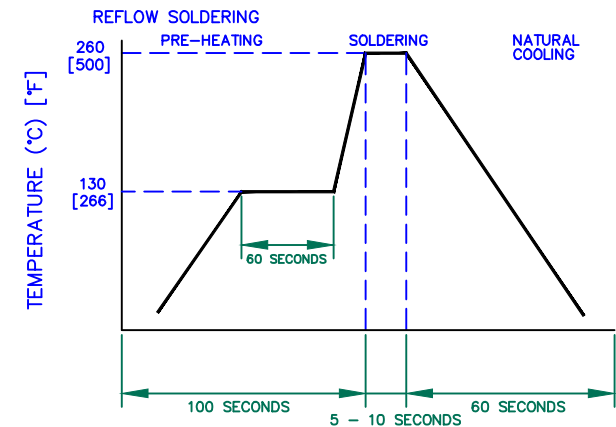


## LAND PATTERNS FOR REFLOW SOLDERING



(For wave soldering, add 0.762 [.030] to this dimension.)

## RECOMMENDED SOLDERING CONDITIONS



**UNCONTROLLED DOCUMENT**

DIMENSIONS ARE IN mm [INCHES].				This print is the property of Laird Tech. and is loaned in confidence subject to return upon request and with the understanding that no copies shall be made without the written consent of Laird Tech. All rights to design or invention are reserved.			
F	CHANGE REFLOW TEMPERATURE	02/10/11	JUN				
E	UPDATE LAND PATTERN ADD ROHS	02/26/09	JRK				
D	UPDATE COMPANY LOGO	10/24/08	JRK				
C	UPDATE COMPANY LOGO	04/19/07	JRK				
B	CORRECT CURRENT RATING	01/12/06	JRK				
A	ORIGINAL DRAFT	04/22/04	JRK	PROJECT/PART NUMBER:	REV	PART TYPE:	DRAWN BY:
REV	DESCRIPTION	DATE	INT	28F0181-1SR-10	F	ASSEMBLY	JRK
				DATE:	SCALE:	SHEET:	
				04/22/04	NTS		
				CAD #	TOOL #	1 of 2	
				28F0181-1SR-10-F-1	H0181		