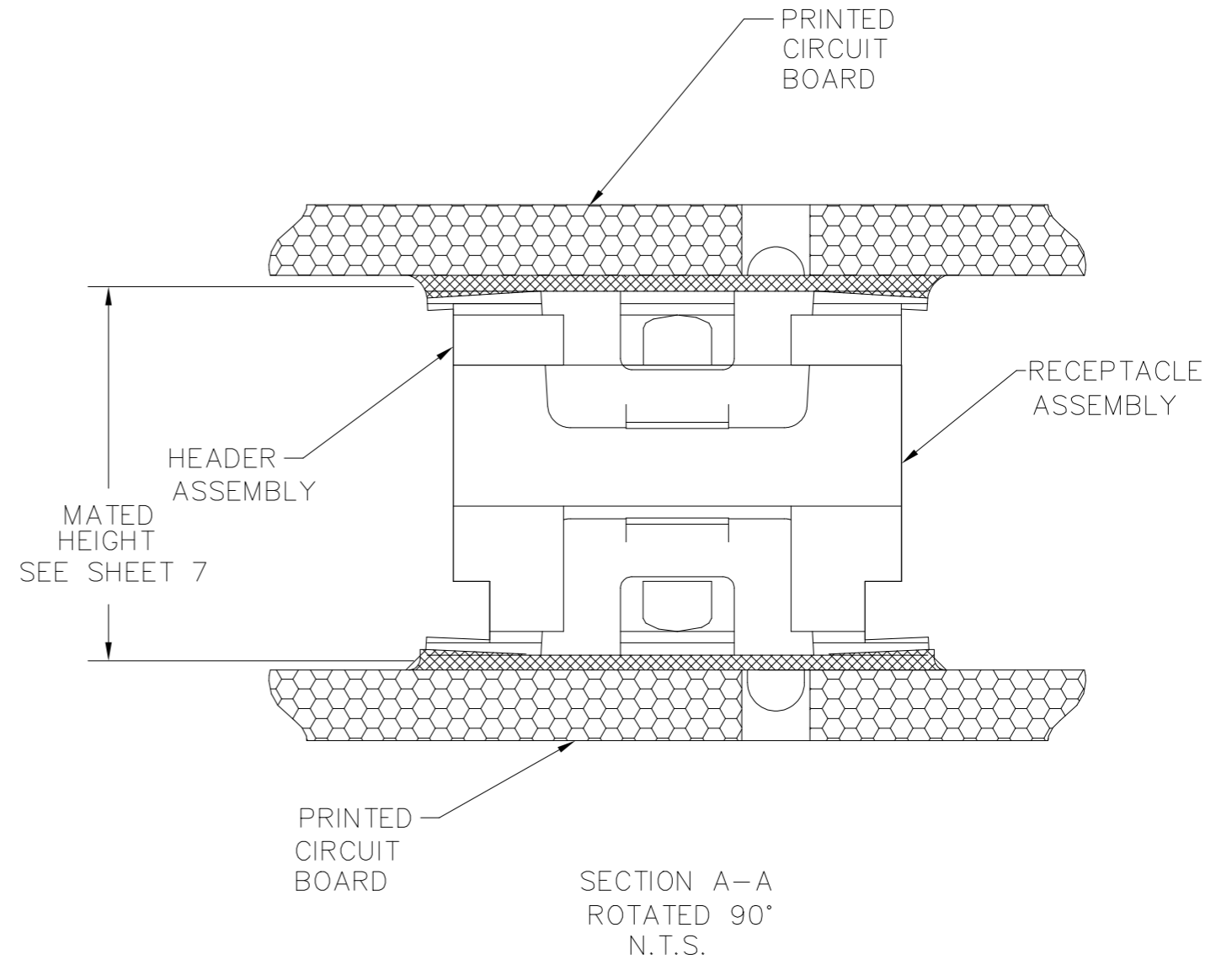
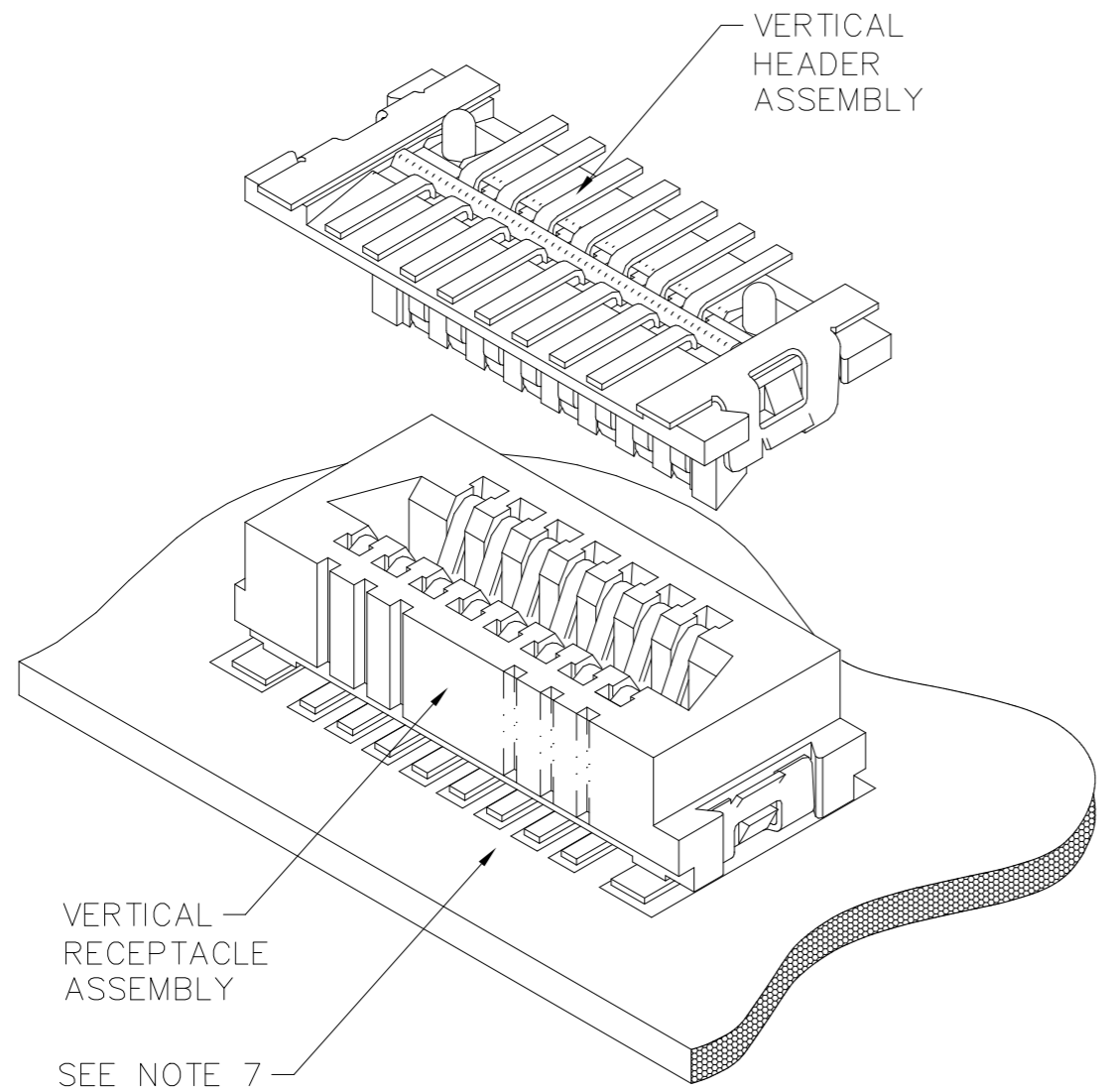
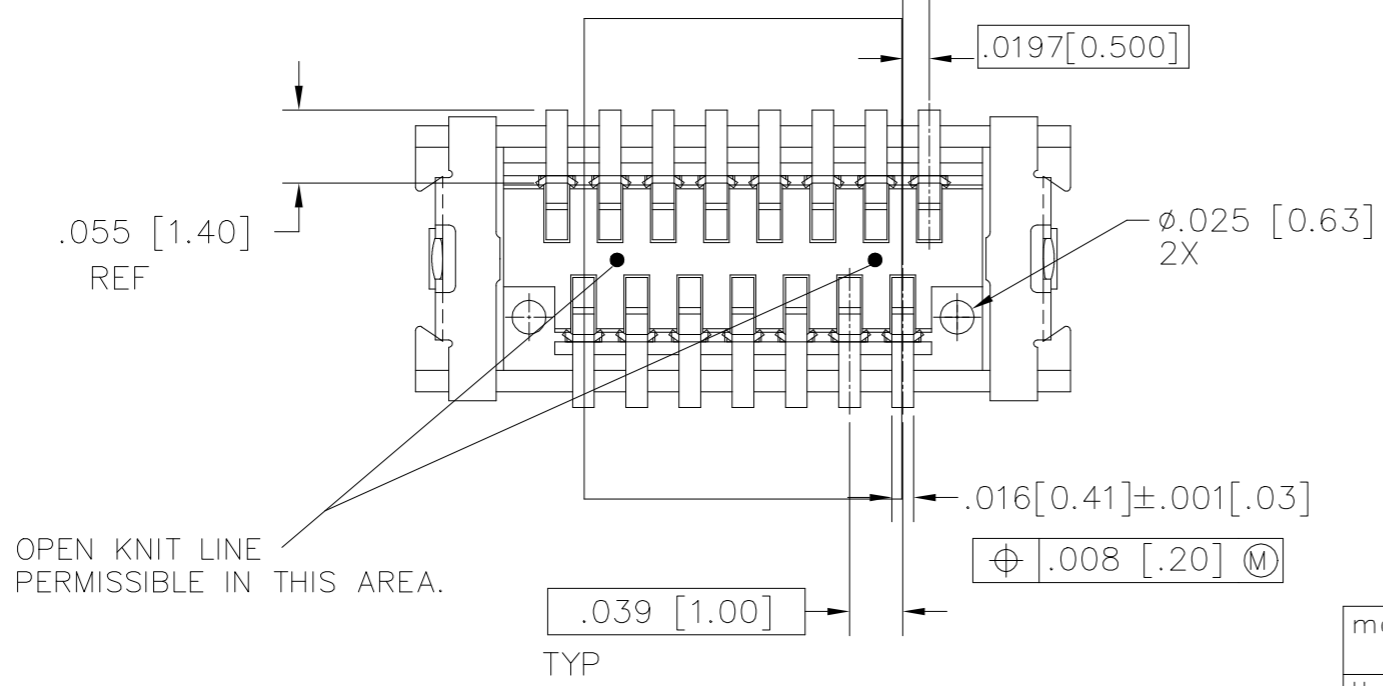
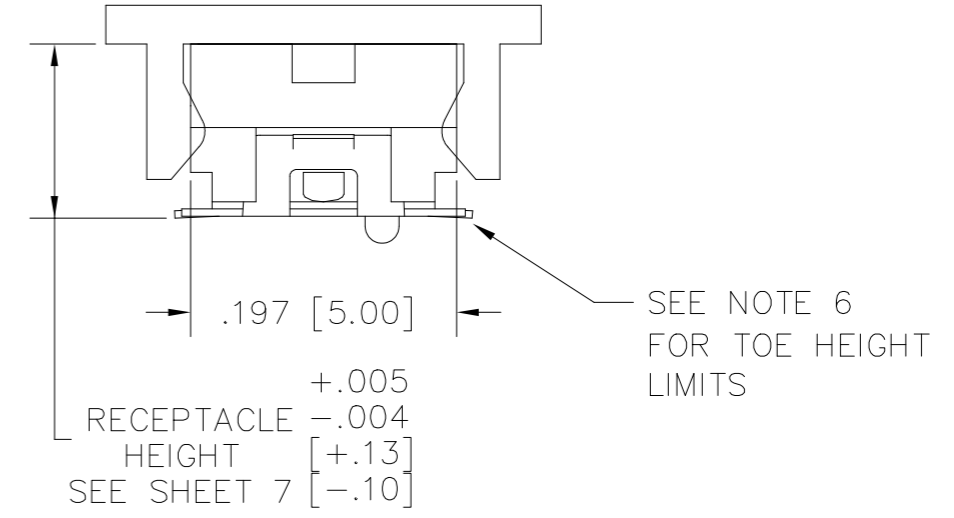
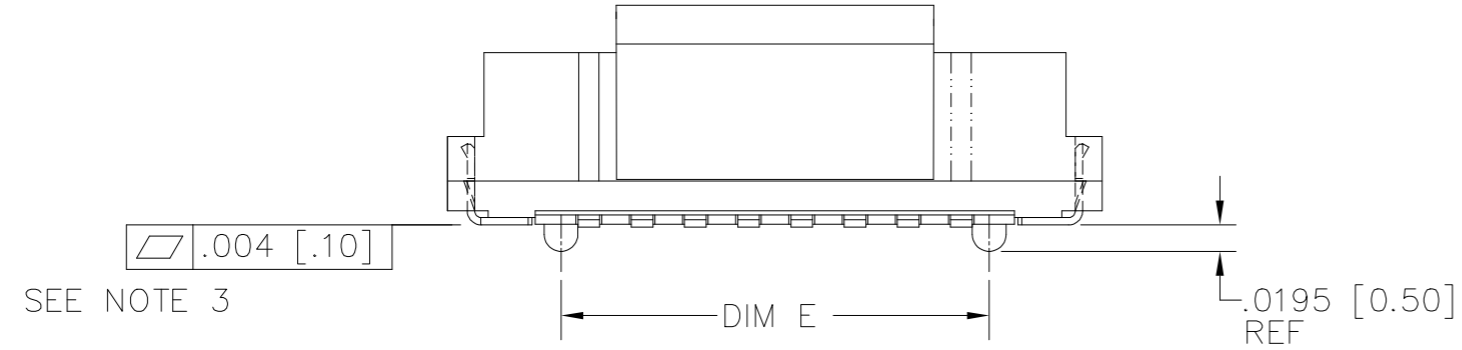
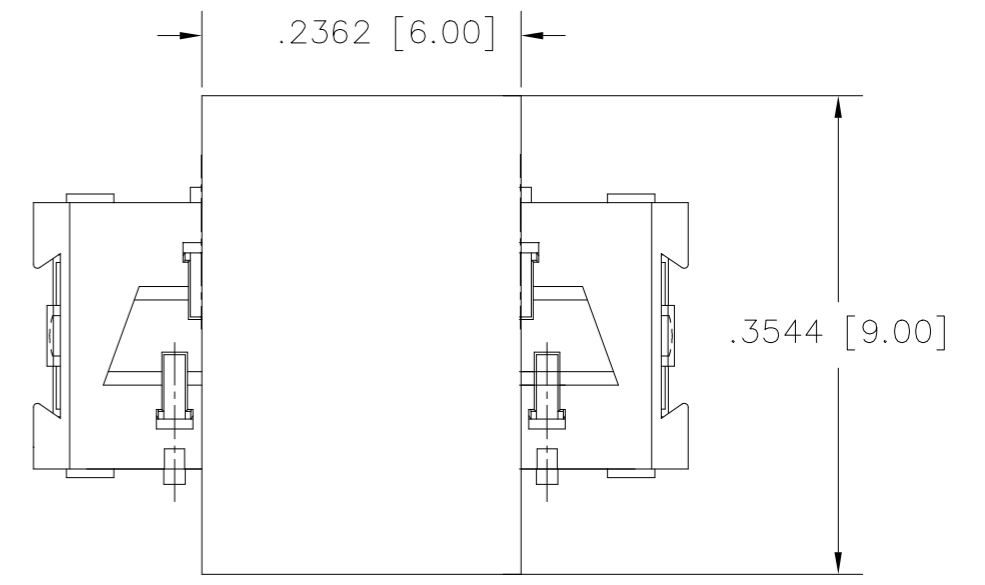
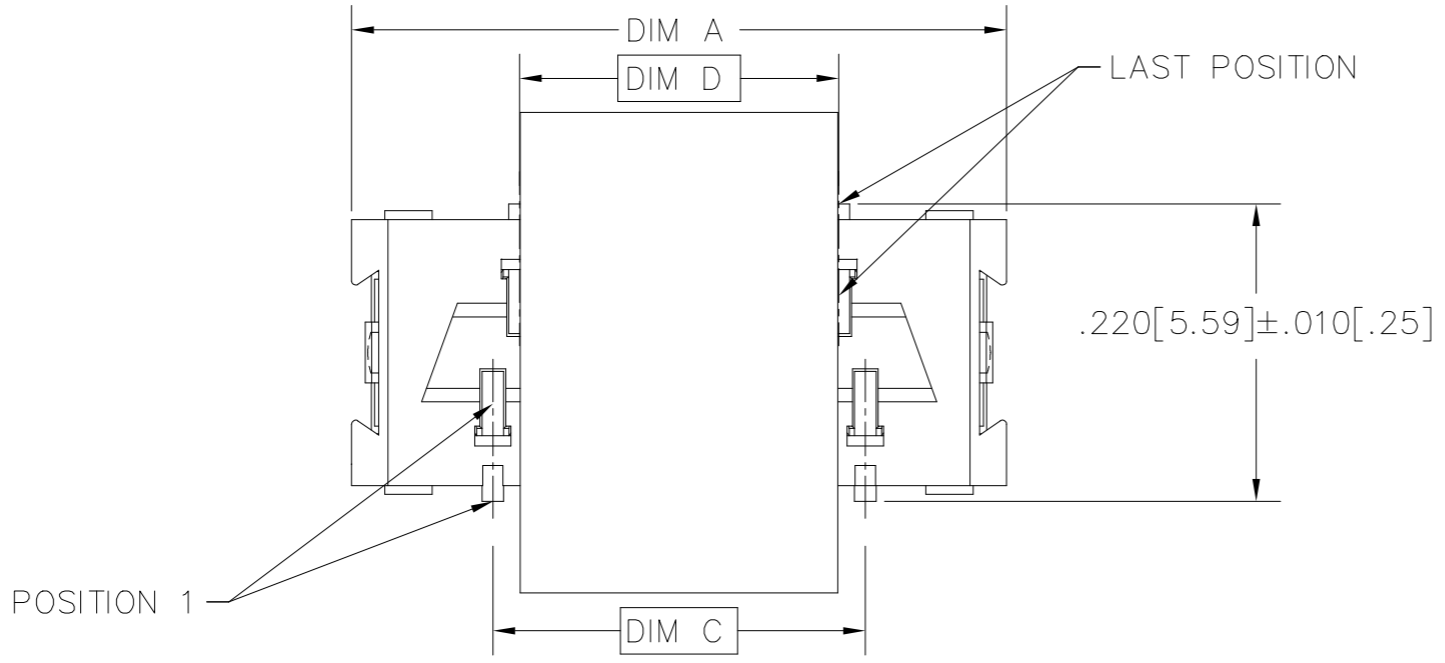


© 2016 AFCI
 © 2016 AFCI
 © 2016 AFCI
 © 2016 AFCI



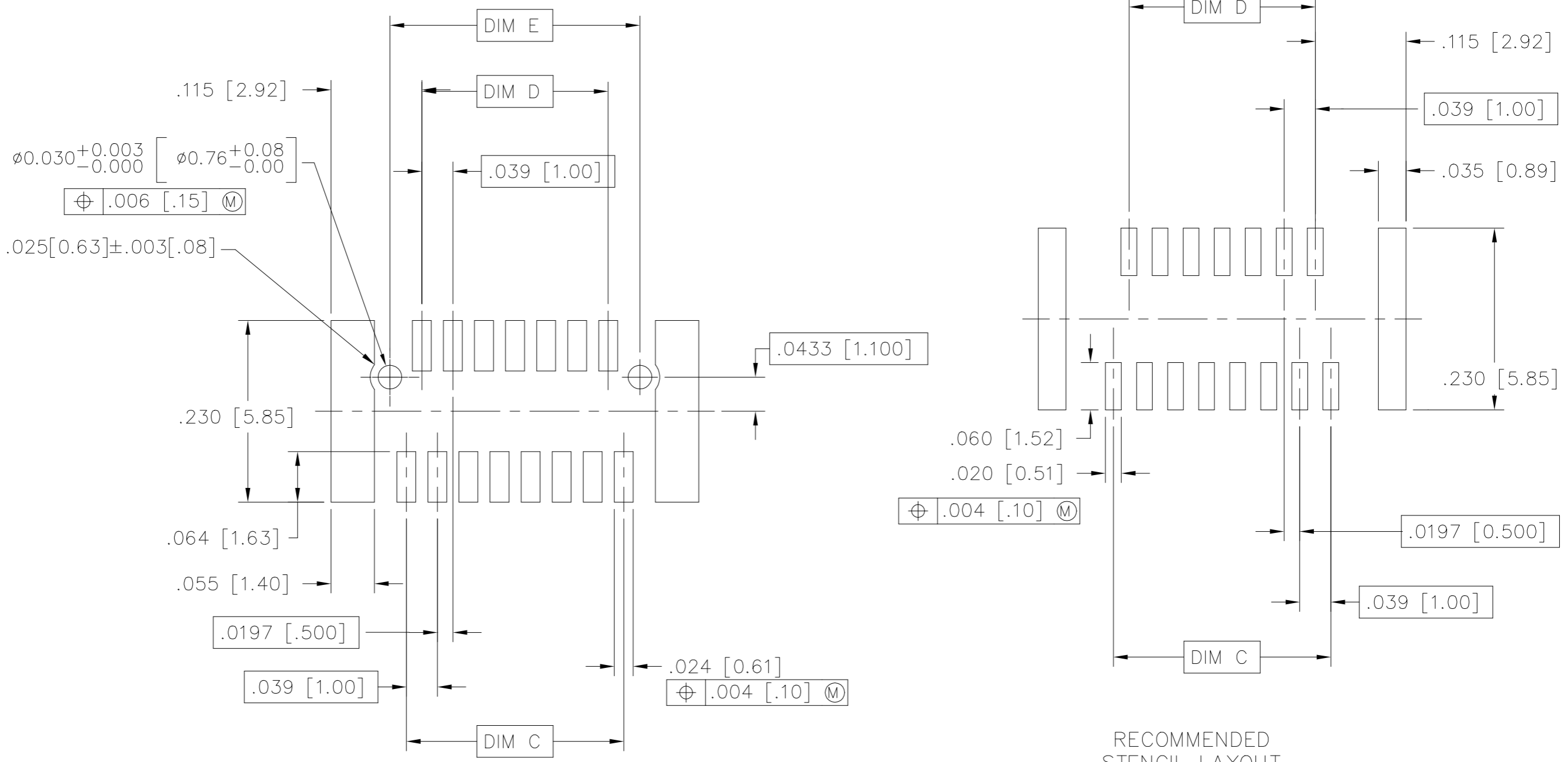
mat'l. code		surface		tolerance		projection		product family	
		ISO 1302 ✓		ISO 406 ISO		1101		CONAN®	
ltr	ecn no	dr	date	tolerances unless otherwise specified		INCH/MM		title	
AP	ELX-N-48730	Alan	2023-07-12	angles	.0±.30	↔		CONAN® CONNECTOR ASSEMBLY	
AH	ELX-N-22454	EH	2015-10-11	linear	.00±.20	↔		dwg no	
AJ	-	EH	2015-12-12	0°±x'	.000±.10	↔		sheet 1 of 7	
AK	ELX-N-26578	TONY	2017-04-07	dr	Eric Huang	2015-10-11		size	
AL	ELX-N-26810	TONY	2017-04-26	engr	Alan Ni	2023-07-12		A3	
AM	ELX-N-35652	Bob	2019-12-17	chr	LQ Lei	2023-07-12		91900	
AN	ELX-N-37277	Bob	2020-06-04	appd	Tim Yao	2023-07-12		type	
sheet	revision	AL	AM	AN	AP			Product Customer Drawing	
index	sheet	1	7	2	7				

PRODUCT NUMBER
SEE TABLE



mat'l. code		surface	tolerance	projection	product family
		ISO 1302 ✓	ISO 406 ISO	1101	CONAN®
ltr	ecn no	dr	date	tolerances unless otherwise specified	title
AP				angles linear	CONAN® CONNECTOR ASSEMBLY
				0°±x'	dwg no
					sheet 2 of 7
				dr Eric Huang 2019-12-17	size
				engr Alan Ni 2023-07-12	A3
				chr LQ Lei 2023-07-12	91900
				appd Tim Yao 2023-07-12	type Product Customer Drawing
sheet index	revision sheet				

PRODUCT NUMBER
SEE TABLE

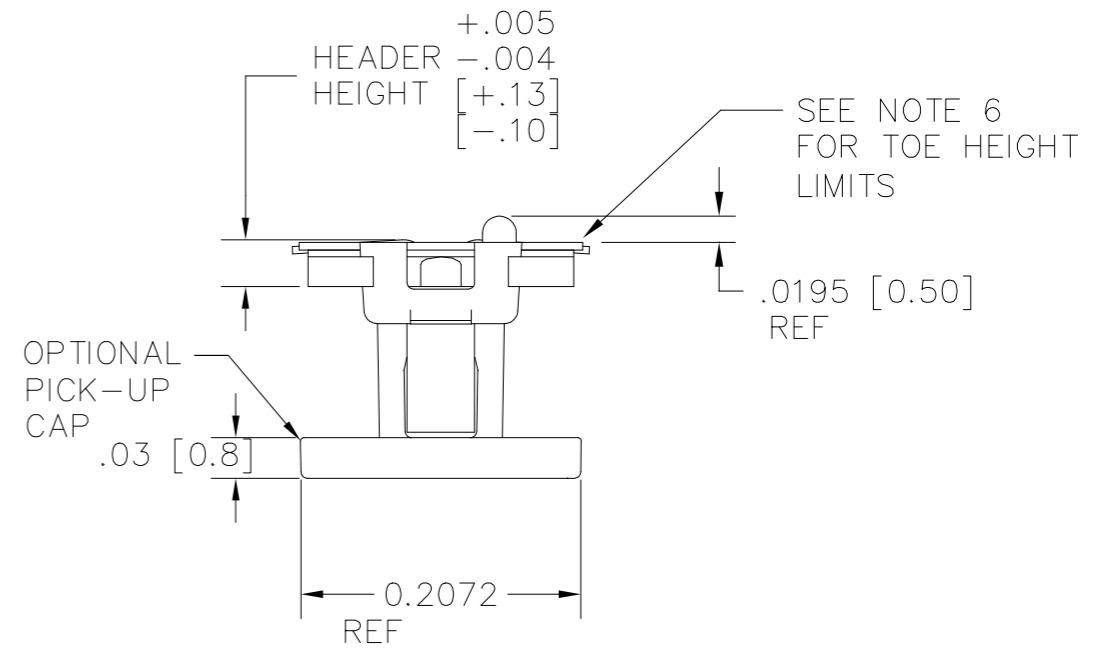
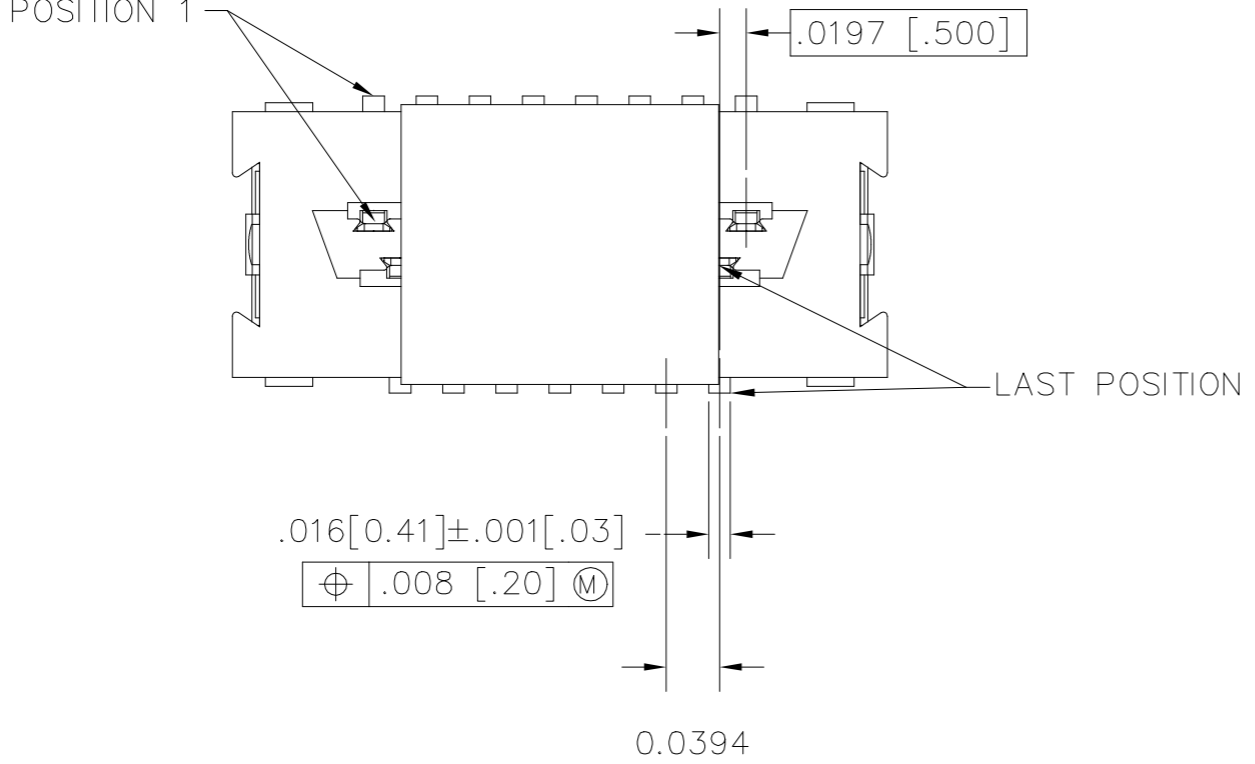
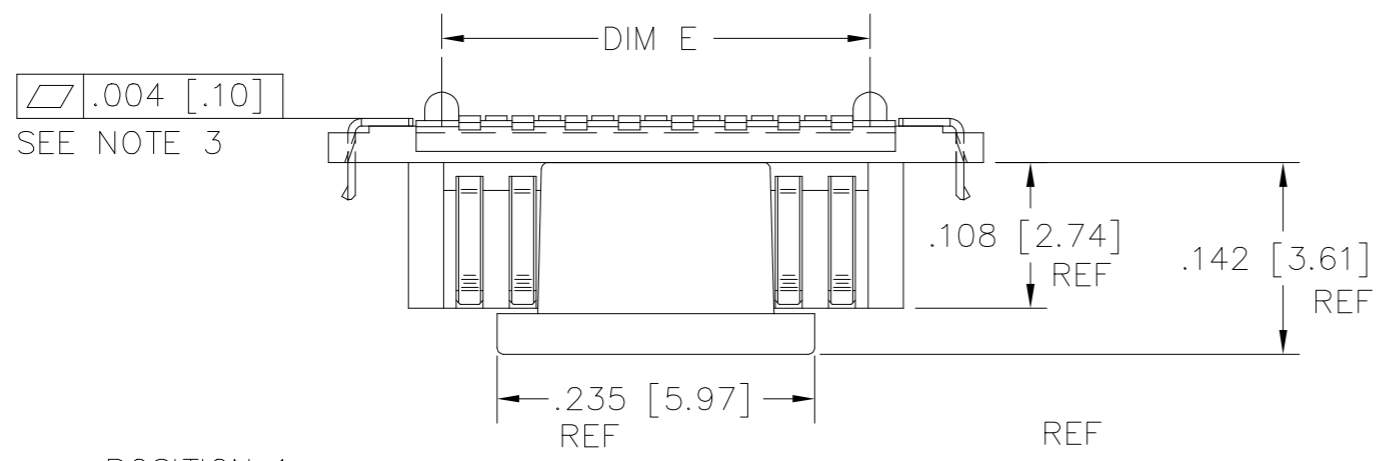
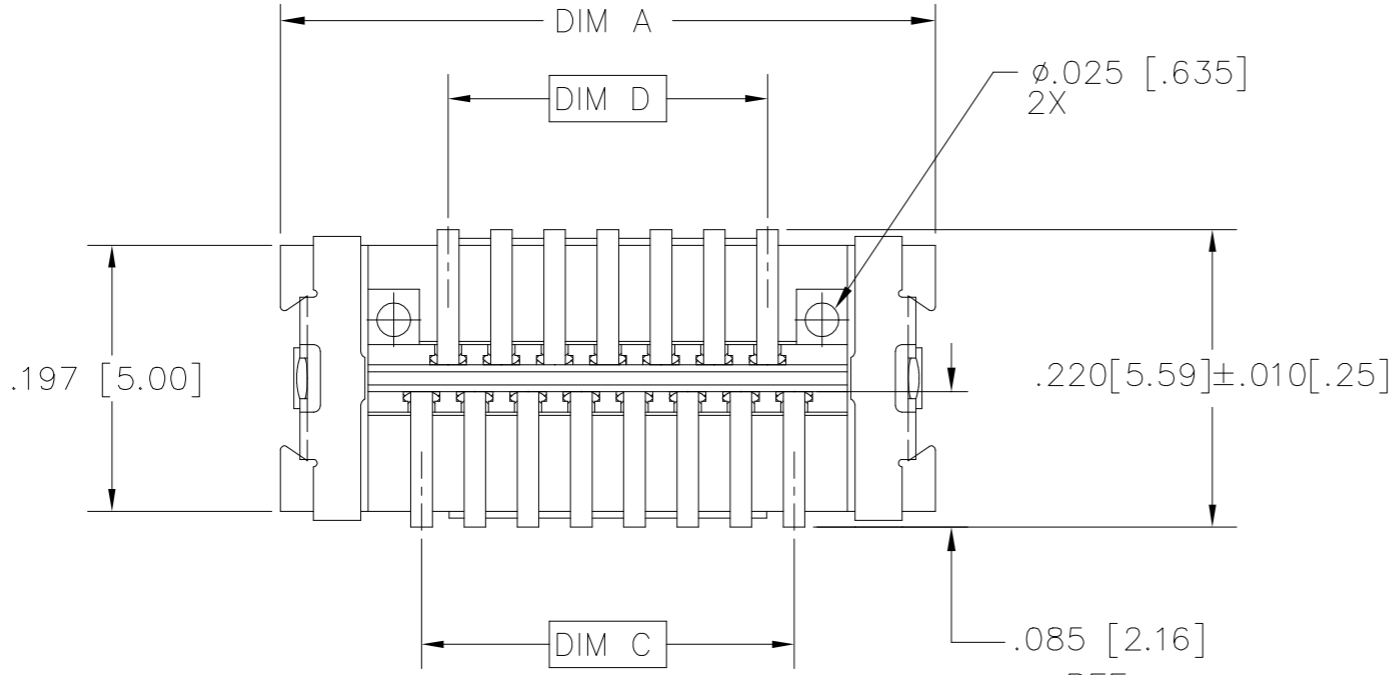


Amphenol
FCi

© 2016 AFCI

mat'l. code		surface		tolerance		projection		product family	
		ISO 1302 ✓		ISO 406 ISO		1101		CONAN®	
ltr		ecn no		dr		date		title	
AP								CONAN® CONNECTOR ASSEMBLY	
		angles		linear		INCH/MM		scale 1:1	
		0°±x'							
		dr		Eric Huang		2019-12-17		dwg no	
		engr		Alan Ni		2023-07-12		sheet 3 of 7	
		chr		LQ Lei		2023-07-12		size	
		appd		Tim Yao		2023-07-12		A3	
sheet index		revision sheet						type	
								Product Customer Drawing	

PRODUCT NUMBER
SEE TABLE



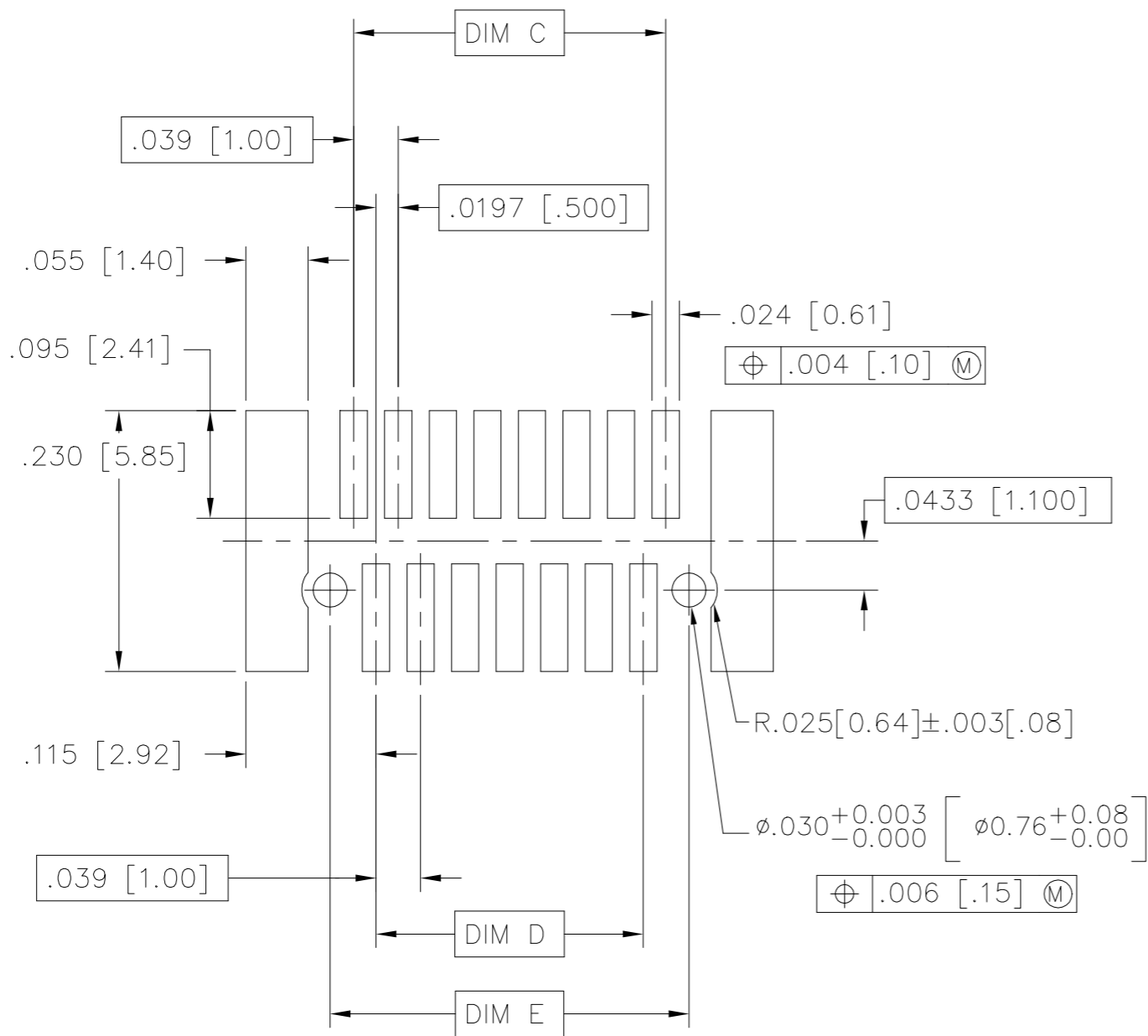
mat'l. code		surface		tolerance		projection		product family	
		ISO 1302 ✓		ISO 406 ISO		1101		CONAN®	
ltr		ecn no		dr		date		title	
AP								CONAN® CONNECTOR ASSEMBLY	
		angles		linear		0°±x'		dwg no	
								sheet 4 of 7 size	
				dr		Eric Huang 2019-12-17		91900 A3	
				engr		Alan Ni 2023-07-12		type	
				chr		LQ Lei 2023-07-12		Product Customer Drawing	
				appd		Tim Yao 2023-07-12			
sheet index		revision sheet							

Amphenol FCI

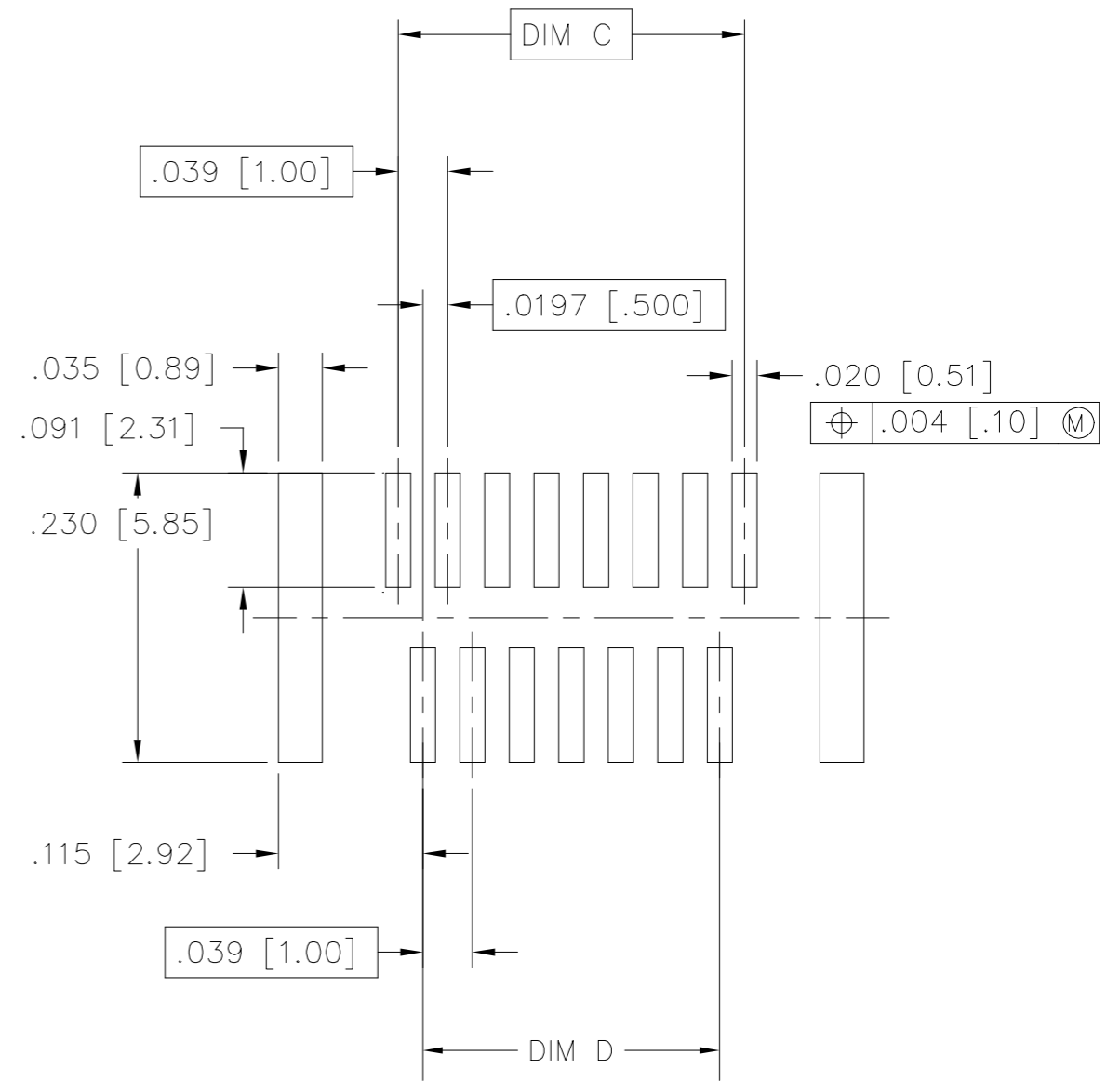
© 2016 AFCI



PRODUCT NUMBER
SEE TABLE



RECOMMENDED
PAD LAYOUT



RECOMMENDED
STENCIL LAYOUT
FOR HEADER



© 2016 AFCI

mat'l. code		surface		tolerance		projection		product family	
		ISO 1302 ✓		ISO 406 ISO 1101		1101		CONAN®	
ltr		ecn no		dr		date		title	
AP								CONAN® CONNECTOR ASSEMBLY	
				angles		linear		INCH/MM	
				0°±x'		.0±.30		scale 1:1	
				dr		Eric Huang		2019-12-17	
				engr		Alan Ni		2023-07-12	
				chr		LQ Lei		2023-07-12	
				appd		Tim Yao		2023-07-12	
sheet index		revision sheet						dwg no	
								91900	
								sheet 5 of 7	
								size A3	
								type Product Customer Drawing	



PRODUCT NUMBER	POS	DIM "A"	DIM "C"	DIM "D"	DIM "E"
919TC-WXY09	9	.366 [9.30]	.157 [4.00]	.118 [3.00]	.1990 [5.055]
↑ -WXY09LF					
-WXY11	11	.406 [10.30]	.197 [5.00]	.157 [4.00]	.2380 [6.045]
-WXY11LF					
-WXY15	15	.484 [12.30]	.276 [7.00]	.236 [6.00]	.3170 [8.052]
-WXY15LF					
-WXY21	21	.602 [15.30]	.394 [10.00]	.354 [9.00]	.4350 [11.049]
-WXY21LF					
-WXY25	25	.681 [17.30]	.472 [12.00]	.433 [11.00]	.5140 [13.056]
-WXY25LF					
-WXY31	31	.800 [20.30]	.591 [15.00]	.551 [14.00]	.6320 [16.053]
-WXY31LF					
-WXY41	41	.996 [25.30]	.787 [20.00]	.748 [19.00]	.8290 [21.057]
-WXY41LF					
-WXY51	51	1.193 [30.30]	.984 [25.00]	.945 [24.00]	1.0260 [26.060]
-WXY51LF					
-WXY69	69	1.547 [39.30]	1.339 [34.00]	1.299 [33.00]	1.3800 [35.052]
↓ -WXY69LF					

NOTES:

1. MATERIALS:
 RECEPTACLE HOUSING - LCP, UL-94V-0. COLOR: NATURAL.
 RECEPTACLE TERMINALS - COPPER ALLOY, PLATED WITH 15u"/.38u GXT™ IN CONTACT AREA AND 100u"/2.54u Sn ON SOLDER LEGS WITH AN OVERALL 50u"/1.27u Ni UNDERPLATE.
 HEADER HOUSING - LCP, UL-94V-0. COLOR: NATURAL.
 HEADER TERMINALS - COPPER ALLOY, PLATED WITH 15u"/.38u GXT™ IN CONTACT AREA AND 100u"/2.54u Sn ON SOLDER LEGS WITH AN OVERALL 50u"/1.27u Ni UNDERPLATE.
 RETENTION DEVICE - BRASS, PLATED WITH 100u"/2.54u Sn OVER NICKEL.
2. REFERENCE GS-12-006 FOR PRODUCT PERFORMANCE DATA.
3. SEE TA-774 FOR FURTHER DESCRIPTION OF HOW THIS DIMENSION IS APPLIED.
4. PICK AND PLACE CAP OR TAPE IS ONLY AVAILABLE WITH OPTION 3 PACKAGING. (PSA ADHESIVE SEALED). ALSO, PSA PACKAGING REQUIRES A PICK AND PLACE CAP.
5. RECOMMENDED SOLDER PASTE THICKNESS IS .006 TO .008 INCHES THICK.
6. THE TOE HEIGHT OF THE SOLDER TAIL SHALL BE MEASURED FROM THE LOWEST POINT OF THE .004 CO-PLANARITY GRAVITY PLANE. THIS MEASUREMENT IS NOT TO EXCEED A WINDOW OF .000 TO .007 INCHES.
7. THREE SLOTS MAY BE LOCATED AT EITHER END OF HOUSING.
8. 5.50mm MATED HEIGHT IS ONLY AVAILABLE IN 9, 15 AND 31 POS.
9. 7.50mm MATED HEIGHT IS ONLY AVAILABLE IN 9 POS.
10. APPLIES TO 91921-3XYZZ AND 91931- 3XYZZ OPTIONS ONLY.
11. THE HOUSING WILL WITHSTAND EXPOSURE TO 260°C PEAK TEMPERATURE FOR 30 SECONDS IN A CONVECTION INFRA RED OR VAPOR PHASE REFLOW OVEN. SEE APPLICATION/PROCEDURES IF THEY ARE AVAILABLE
12. PRODUCT WITH "F" AT THE END MEETS EUROPEAN UNION DIRECTIVES AND OTHER COUNTRY REGULATION AS DESCRIBED IN GS-22-008.

Amphenol FCI

© 2016 AFCI

mat'l. code		surface <input checked="" type="checkbox"/> ISO 1302		tolerance <input checked="" type="checkbox"/> ISO 406		projection <input checked="" type="checkbox"/> 1101		product family CONAN®	
ltr		ecn no		dr		date		title	
AP								CONAN® CONNECTOR ASSEMBLY	
		angles		linear		.0±.30		INCH/MM	
		0°±x°				.00±.20		scale 1:1	
		dr		Eric Huang		2015-10-11		dwg no sheet 6 of 7 size	
		engr		Alan Ni		2023-07-12		91900 A3	
		chr		LQ Lei		2023-07-12		type Product Customer Drawing	
		appd		Tim Yao		2023-07-12			
sheet index		revision sheet							

CONAN[®] ASSEMBLY PART NUMBER

919 T C - W X Y ZZ L F

LEAD FREE OPTION
SEE NOTE 12

TYPE	T
HEADER WITH NO PEGS	0
HEADER WITH PEGS	1
RECEPTACLE WITH NO PEGS	2
RECEPTACLE WITH PEGS	3

L	MANDATORY CODE
L	STANDARD, NOT MANDATORY P/N
A	ONLY FOR DEDICATED CUSTOMER

PICK AND PLACE CAP OR TAPE (NOTE 4)	C
WITHOUT CAP OR TAPE	0
WITH CAP	1
WITH TAPE (RECEPTACLE ONLY)	2

PACKAGING	W
TUBE	2
PRESSURE SEALED TAPE & REEL	3

NOTE 4

Y	HEADER HEIGHT	RECEPTACLE HEIGHT	MATED HEIGHT
1	.034 [.86]	.129 [3.28]	.163 [4.15]
2	.048 [1.23]	SEE Y=1 FOR ALL RECEPTACLES	.177 [4.50]
3	.068 [1.73]		.197 [5.00]
4	.107 [2.72]		.236 [6.00]
5	.1465 [3.721]		.276 [7.00]
6	.088 [2.23]		.216 [5.50]
7	.1665 [4.229]		.296 [7.52]

*
* *

* NOTE 8
* * NOTE 9

ZZ	NUMBER OF POSITIONS
09	9
11	11
15	15
21	21
25	25
31	31
41	41
51	51
69	69

X	PLATING
1	15u"/.38u GXT™
2	30u"/.76u GXT™
3	Au 30u"/.76u

EXAMPLE: 91921-31125LF
IS A CONAN[®] RECEPTACLE ASSEMBLY, HAVING NO PEGS AND WITH A PICK AND PLACE CAP. IT ALSO HAS GXT™ PLATING, IS .13 [3.2] HIGH AND 25 POSITIONS AND IS PACKAGED IN PRESSURE SEALED TAPE, REEL AND LEAD FREE.



© 2016 AFCI

mat'l. code		surface	tolerance	projection	product family
ISO 1302		ISO 406	ISO 1101	CONAN [®]	
ltr	ecn no	dr	date	tolerances unless otherwise specified	title
AP				angles linear	CONAN [®] CONNECTOR ASSEMBLY
				0°±x'	
				dr Eric Huang 2015-10-11	dwg no sheet 7 of 7 size
				enr Alan Ni 2023-07-12	91900 A3
				chr LQ Lei 2023-07-12	
				appd Tim Yao 2023-07-12	type Product Customer Drawing
sheet index	revision sheet				