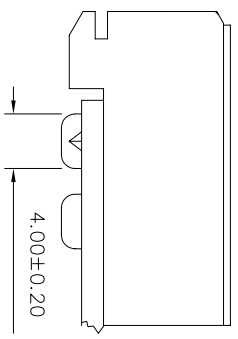
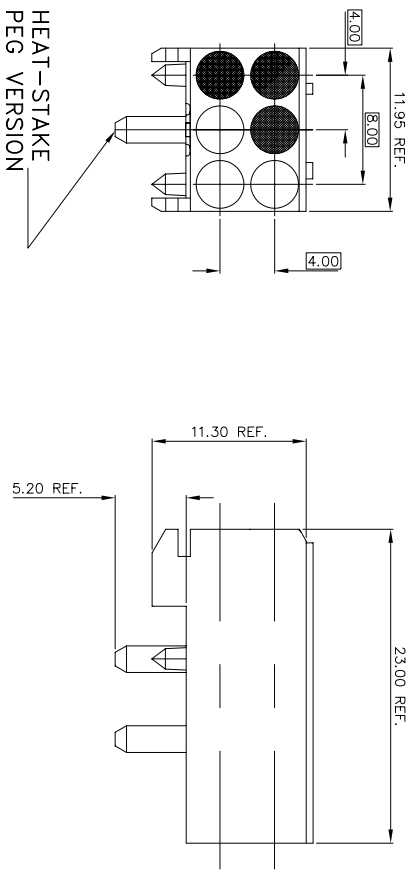
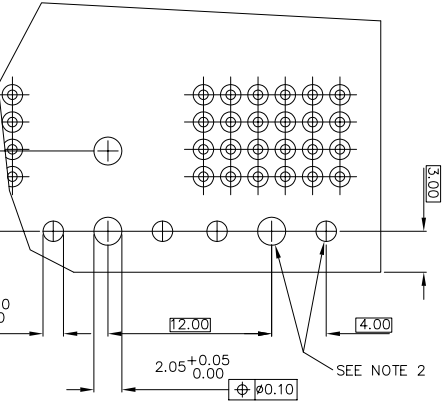
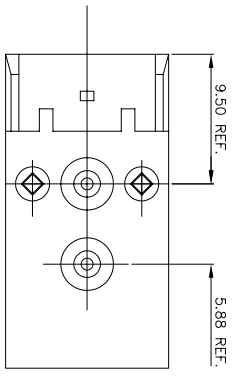


FRONT VIEW



ASSEMBLY AFTER HOT RIVETING



REQUIRED PC BOARD LAYOUT  
COMPONENT SIDE

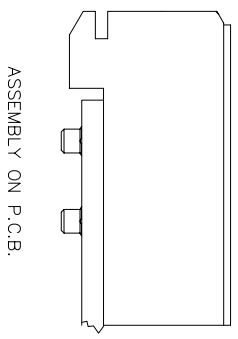
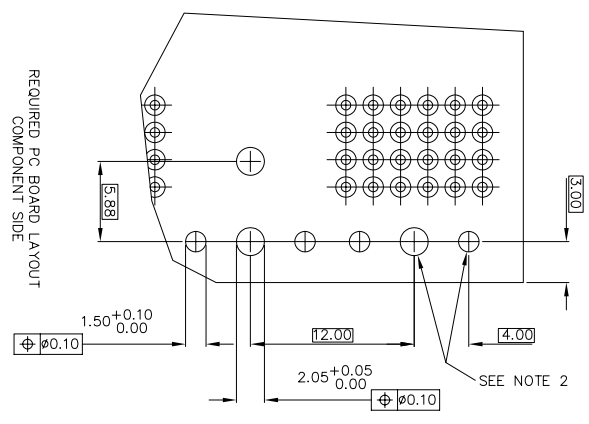
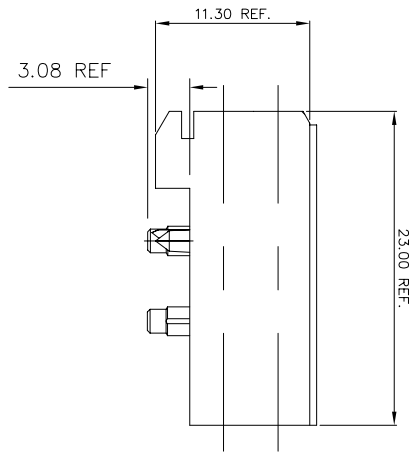
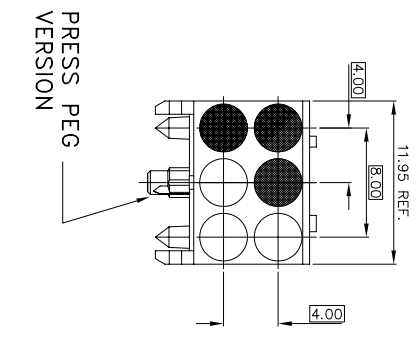
- NOTE:
- HOUSING MATERIAL: LCP, 30% GLASS FILLED FLAME RETARDANT PER UL 94V-0  
COLOR: NATURAL
  - INDICATED HOLES ARE UNPLATED
  - SHADED AREA DENOTES PLUGGED (CLOSE) POSITION. SEE SHEET #4 FOR PLUG COMBINATIONS AND PRODUCT NUMBERS. PLUG COMBINATION SHOWN ABOVE IS FOR REFERENCE ONLY. (PLUG COMBINATION #13)
  - ADD "L" SUFFIX AT THE END OF PART NUMBER FOR LEAD FREE OPTION.
  - THIS PRODUCT MEETS EUROPEAN UNION DIRECTIVES AND OTHER COUNTRY REGULATION AS DESCRIBED IN GS-22-008.
  - THE HOUSING WILL WITHSTAND EXPOSURE TO 260°C PEAK TEMPERATURE FOR 15 SECONDS IN A WAVE SOLDER APPLICATION WITH A 1.5mm MINIMUM THICK CIRCUIT BOARD OR FOR 10-20 SECONDS IN A CONVECTION, INFRARED OR VAPOR PHASE REFLOW OVEN. SEE APPLICATION NOTES/PROCEDURES IF THEY ARE AVAILABLE.

mat'l. code	surf'ce	tolerance	projection	title	product family
	ISO 1302	ISO 406	ISO 1101		METRAL ACC
Itr	ecn no   dr	date	tolerance unless otherwise specified		
J	V10105	JRW	1/04/01	angles	
K	V12705	CGD	11/14/01	linear	.0±.3
L	V04-0174	HTB	2/18/04		.000±.051
M	M05-0264	MHT	12/28/05	dr	scale 1:1
N	M05-0077	MHT	2/17/06	enrg	S:STONER
P	M05-0147	MHT	4/07/06	chr	R:DOURICH
R	M05-0159	MHT	5/08/06	pppd	S:STONER
sheet	revision	R	R	R	R
index	sheet	1	2	3	4



dwg no	sheet 1 of 6	size
88916	A3	A3
type	Product Customer Drawing	

**FRONT VIEW**

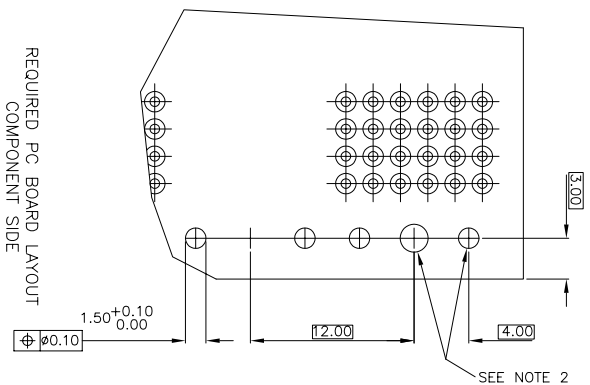
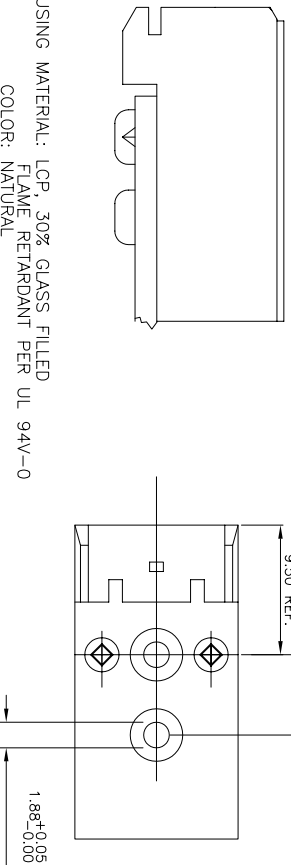
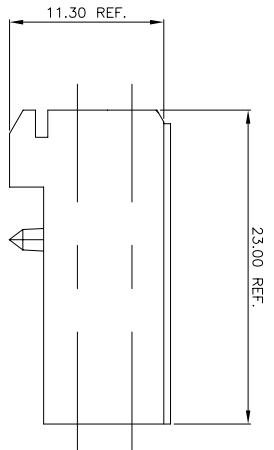
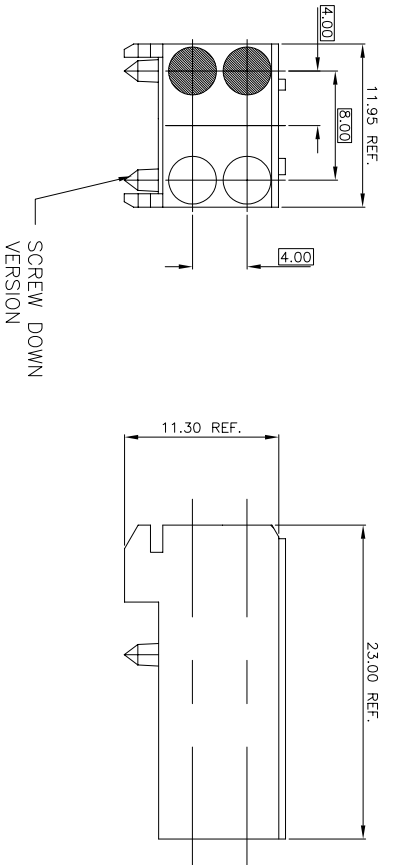


- NOTE:**
- HOUSING MATERIAL: LCP, 30% GLASS FILLED FLAME RETARDANT ACC. UL 94V-0 COLOR: NATURAL
  - INDICATED HOLES ARE UNPLATED
  - SHADED AREA DENOTES PLUGGED (CLOSE) POSITION. SEE SHEET #4 FOR PLUG COMBINATIONS AND PRODUCT NUMBERS. (PLUG COMBINATION #13)

- ADD "Lr" SUFFIX AT THE END OF PART NUMBER FOR LEAD FREE OPTION.
- THIS PRODUCT MEETS EUROPEAN UNION DIRECTIVES AND OTHER COUNTRY REGULATION AS DESCRIBED IN GS-22-006.
- THE HOUSING WILL WITHSTAND EXPOSURE TO 260°C PEAK TEMPERATURE FOR 15 SECONDS IN A WAVE SOLDER APPLICATION WITH A 1.5mm MINIMUM THICK CIRCUIT BOARD OR FOR 10-20 SECONDS IN A CONNECTION, INFRA-RED OR VAPOR PHASE REFLOW OVEN. SEE APPLICATION NOTES/PROCEDURES IF THEY ARE AVAILABLE.

mat'l. code	surface	tolerance	projection	product family
l/r	ISO 1302	ISO 406	METRAL ACC	
ecn no	tolerances unless otherwise specified			
dr	angles	.0±.3	title	RECEPTACLE KEYING
	lineart	.00±.13	MM	MODULE
	0°±2'	.000±.051	scale 1:1	
	dr	S:STONER	4/16/93	dwg no
	enrg	R:DOUTRICH	4/16/93	88916
	chr	S:STONER	4/16/93	sheet 2 of 6
	pppd	S:STONER	4/16/93	A3
sheet	revision			Product Customer Drawing
index	sheet			

**FRONT VIEW**



NOTE:  
 ① HOUSING MATERIAL: LCP, 30% GLASS FILLED  
 FLAME RETARDANT PER UL 94V-0  
 COLOR: NATURAL

② INDICATED HOLES ARE UNPLATED

3. TWO MOUNTING SCREW, P/N 63787-001, FOR MAX PCB THICKNESS 2.4MM[0.094"] OR P/N 63787-002 FOR MAX. PCB THICKNESS 3.2MM[0.126"] MUST BE ORDERED SEPARATELY.

4. SHADED AREA DENOTES PLUGGED (CLOSE) POSITION. SEE SHEET #6 FOR PLUG COMBINATIONS AND PRODUCT NUMBERS. PLUG COMBINATION SHOWN ABOVE IS FOR REFERENCE ONLY. (PLUG COMBINATION #04)

⑤ ADD "L" SUFFIX AT THE END OF PART NUMBER FOR LEAD FREE OPTION.  
 6. THIS PRODUCT MEETS EUROPEAN UNION DIRECTIVES AND OTHER COUNTRY REGULATION AS DESCRIBED IN GS-22-008.

7. THE HOUSING WILL WITHSTAND EXPOSURE TO 260°C PEAK TEMPERATURE FOR 15 SECONDS IN A WAVE SOLDER APPLICATION WITH A 1.5mm MINIMUM THICK CIRCUIT BOARD OR FOR 10-20 SECONDS IN A CONVECTION, INFRARED OR VAPOR PHASE REFLOW OVEN. SEE APPLICATION NOTES/PROCEDURES IF THEY ARE AVAILABLE.

form: A3 1 2 3 4 5 6

mat'l. code	surface	tolerance	projection	product family
ISO 1302	ISO 406	ISO 1101	METRAL ACC	
ISO 1101	ISO 1101	ISO 1101	RECEPTACLE KEYING	
ISO 1101	ISO 1101	ISO 1101	MODULE	
ISO 1101	ISO 1101	ISO 1101		
ISO 1101	ISO 1101	ISO 1101		
ISO 1101	ISO 1101	ISO 1101		
ISO 1101	ISO 1101	ISO 1101		
ISO 1101	ISO 1101	ISO 1101		
ISO 1101	ISO 1101	ISO 1101		
ISO 1101	ISO 1101	ISO 1101		

PRODUCT NUMBER 88916-XYZ

2 3

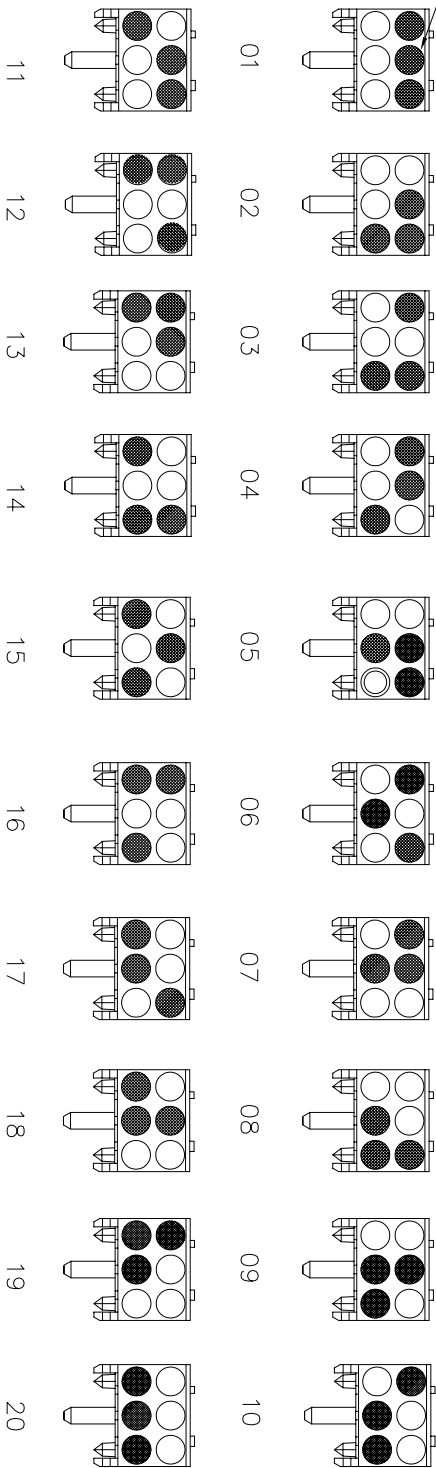
4

5

6

PLUG COMBINATIONS - (FRONT VIEW)

PLUGGED POSITION  
SEE NOTE 1



PRODUCT NUMBER HEAT-STAKE VERSION	PRODUCT NUMBER PRESS-PEG VERSION	COMBINATION NUMBER
88916-101	88916-201	01
88916-102	88916-202	02
88916-103	88916-203	03
88916-104	88916-204	04
88916-105	88916-205	05
88916-106	88916-206	06
88916-107	88916-207	07
88916-108	88916-208	08
88916-109	88916-209	09
88916-110	88916-210	10
88916-111	88916-211	11
88916-112	88916-212	12
88916-113	88916-213	13
88916-114	88916-214	14
88916-115	88916-215	15
88916-116	88916-216	16
88916-117	88916-217	17
88916-118	88916-218	18
88916-119	88916-219	19
88916-120	88916-220	20

NOTES:  
 ① PLUGGED (CLOSE) POSITIONS ARE SHOWN SHADED.  
 2. HEATSTAKE VERSIONS SHOWN ABOVE FOR REFERENCE ONLY.

matl. code	surface	tolerance	projection	product family
	ISO 1302	ISO 406	ISO 1101	METRAL ACC
lit	ecn	no	dr	date
R				
	angles	linear	linear	linear
	0°±2'	.000±.051	.0±.3	.00±.13
	dr	S:STONER	4/16/93	4/16/93
	engr	R:DOURICH	4/16/93	4/16/93
	chr	S:STONER	4/16/93	4/16/93
	pppd	S:STONER	4/16/93	4/16/93
sheet	revision			
index	sheet			



title  
RECEPTACLE KEYING  
MODULE

dwg no  
88916

sheet 4 of 6 size  
A3

type  
Product Customer Drawing

Form: A3

1

2

3

4

5

6

**PLUG COMBINATIONS - (FRONT VIEW)**

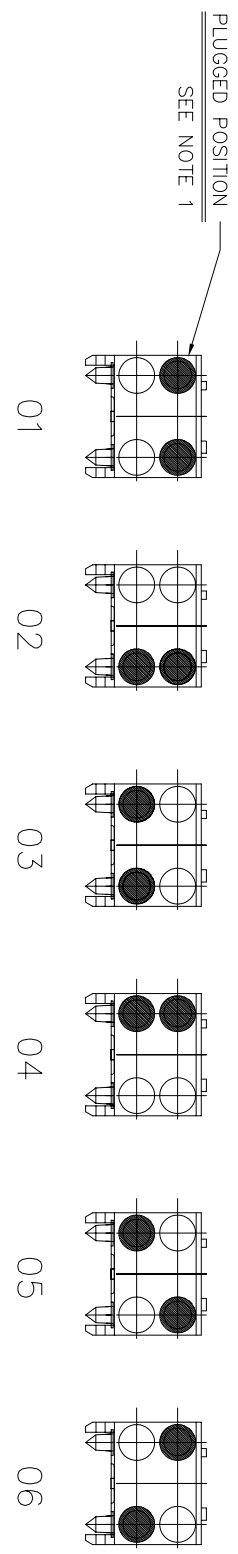
PART NUMBER	CONFIGURATION	APPLICABLE NOTES
88916-301		PRESS PEG
88916-302		PRESS PEG
88916-303		PRESS PEG
88916-304		PRESS PEG
88916-305		PRESS PEG
88916-306		PRESS PEG
88916-307		PRESS PEG

PART NUMBER	CONFIGURATION	APPLICABLE NOTES
88916-308		PRESS PEG

1. ADD "LF" SUFFIX AT THE END OF PART NUMBER FOR LEAD FREE OPTION.
2. THIS PRODUCT MEETS EUROPEAN UNION DIRECTIVES AND OTHER COUNTRY REGULATION AS DESCRIBED IN GS-22-008.
3. THE HOUSING WILL WITHSTAND EXPOSURE TO 260°C PEAK TEMPERATURE FOR 15 SECONDS IN A WAVE SOLDER APPLICATION WITH A 1.5mm MINIMUM THICK CIRCUIT BOARD OR FOR 10-20 SECONDS IN A CONVECTION, INFRA-RED OR VAPOR PHASE REFLOW OVEN. SEE APPLICATION NOTES/PROCEDURES IF THEY ARE AVAILABLE.

mat'l. code	surface	tolerance	projection	product family
lit ecn no	ISO 1302	ISO 406		METRAL ACC
dr	tolerances unless otherwise specified	ISO 1101	MM	RECEPTACLE KEYING MODULE
angles	.0±.3		←	Sheet 5 of 6 size A3
lineart	.00±.13		→	Product Customer Drawing
0°±2°	.000±.051	scale 1:1		
dr	S.STONER	4/16/93		
engr	R.DOUTRICH	4/16/93		
chr	S.STONER	4/16/93		
pppd	S.STONER	4/16/93		
sheet	revision			
index	sheet			

PLUG COMBINATIONS - (FRONT VIEW)



PRODUCT NUMBER SCREW DOWN VERSION	COMBINATION NUMBER
88916-401	01
88916-402	02
88916-403	03
88916-404	04
88916-405	05
88916-406	06

- NOTES:
1. PLUGGED (CLOSE) POSITION ARE SHOWN SHADE.
  2. ADD "LF" SUFFIX AT THE END OF PART NUMBER FOR LEAD FREE OPTION.
  3. THIS PRODUCT MEETS EUROPEAN UNION DIRECTIVES AND OTHER COUNTRY REGULATION AS DESCRIBED IN GS-22-008.
  4. THE HOUSING WILL WITHSTAND EXPOSURE TO 260°C PEAK TEMPERATURE FOR 15 SECONDS IN A WAVE SOLDER APPLICATION WITH A 1.5mm MINIMUM THICK CIRCUIT BOARD OR FOR 10-20 SECONDS IN A CONVECTION, INFRA-RED OR VAPOR PHASE REFLOW OVEN. SEE APPLICATION NOTES/PROCEDURES IF THEY ARE AVAILABLE.

mat'l. code	surface	tolerance	projection	product family
ISO 1302	ISO 406	ISO 1101	METRAL ACC	
lit ecn no/dr	date	tolerances unless otherwise specified	MM	title
R		angles	.0±.3	RECEPTACLE KEYING
		lineart	.00±.13	MODULE
		0°±2'	.000±.051	scale 1:1
		dr	S.STONER	4/16/93
		engr	R.DOUTRICH	4/16/93
		chr	S.STONER	4/16/93
		pppd	S.STONER	4/16/93
sheet	revision			dwg no
index	sheet			88916
				sheet 6 of 6 size
				A3
				type Product Customer Drawing