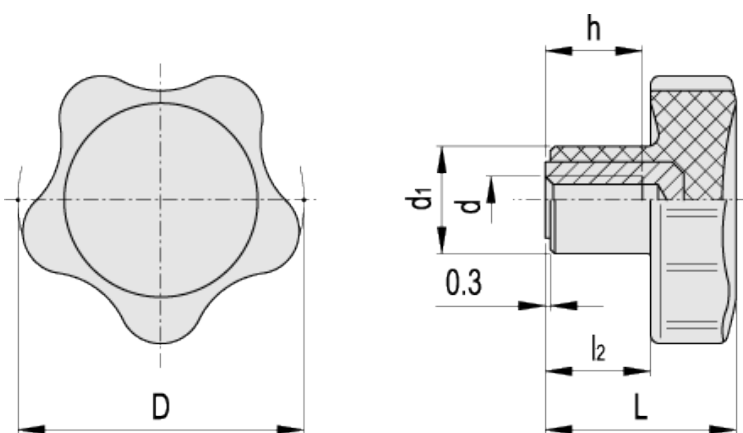


# VC.692-SST

## Lobe knobs



ELESA Original design



Elesa Standards		Main dimensions				Mounting hole		Weight
Code	Description	D	L	d <sub>1</sub>	l <sub>2</sub>	d <sub>6H</sub>	h	g
166116	VC.692/25-SST-M5	25	20	12	10	M5	10	7
166117	VC.692/25-SST-M6	25	20	12	10	M6	10	7
166225	VC.692/32-SST-M5	32	22.5	14	12.5	M5	10	15
166226	VC.692/32-SST-M6	32	22.5	14	12.5	M6	10	15
166345	VC.692/40-SST-M6	40	26	15	14	M6	12	26
166346	VC.692/40-SST-M8	40	26	15	14	M8	13	24
166475	VC.692/50-SST-M8	50	31	18	17	M8	15	45
166476	VC.692/50-SST-M10	50	31	18	17	M10	17	42
166555	VC.692/60-SST-M10	60	36.5	21	21	M10	17	64
166556	VC.692/60-SST-M12	60	36.5	21	21	M12	20	54

### Material

Glass-fibre reinforced polyamide based (PA) technopolymer. Resistant to solvents, oils, greases and other chemical agents.

### Colour

Black, matte finish.

### Standard execution

AISI 303 stainless steel boss, threaded blind hole.

### Features and applications

The exclusive five-lobe shape (ELESA original design) offers the operator's fingers a proper grip and prevents unhealthy residues

from depositing thanks to its solid shape without cavities.

This knob is particularly suitable for applications on machines and equipment whose parts, for hygienic reasons, must be frequently cleaned also using water or steam jets.



**STANDAARD MACHINE ELEMENTS WORLDWIDE**

ELESA models all rights reserved in accordance with the law. Always mention the source when reproducing our drawings.